

Industrialization of the West Susitna Drainage

Mat-Su Salmon Science and Habitat Symposium

Tuesday, November 19th, 2024

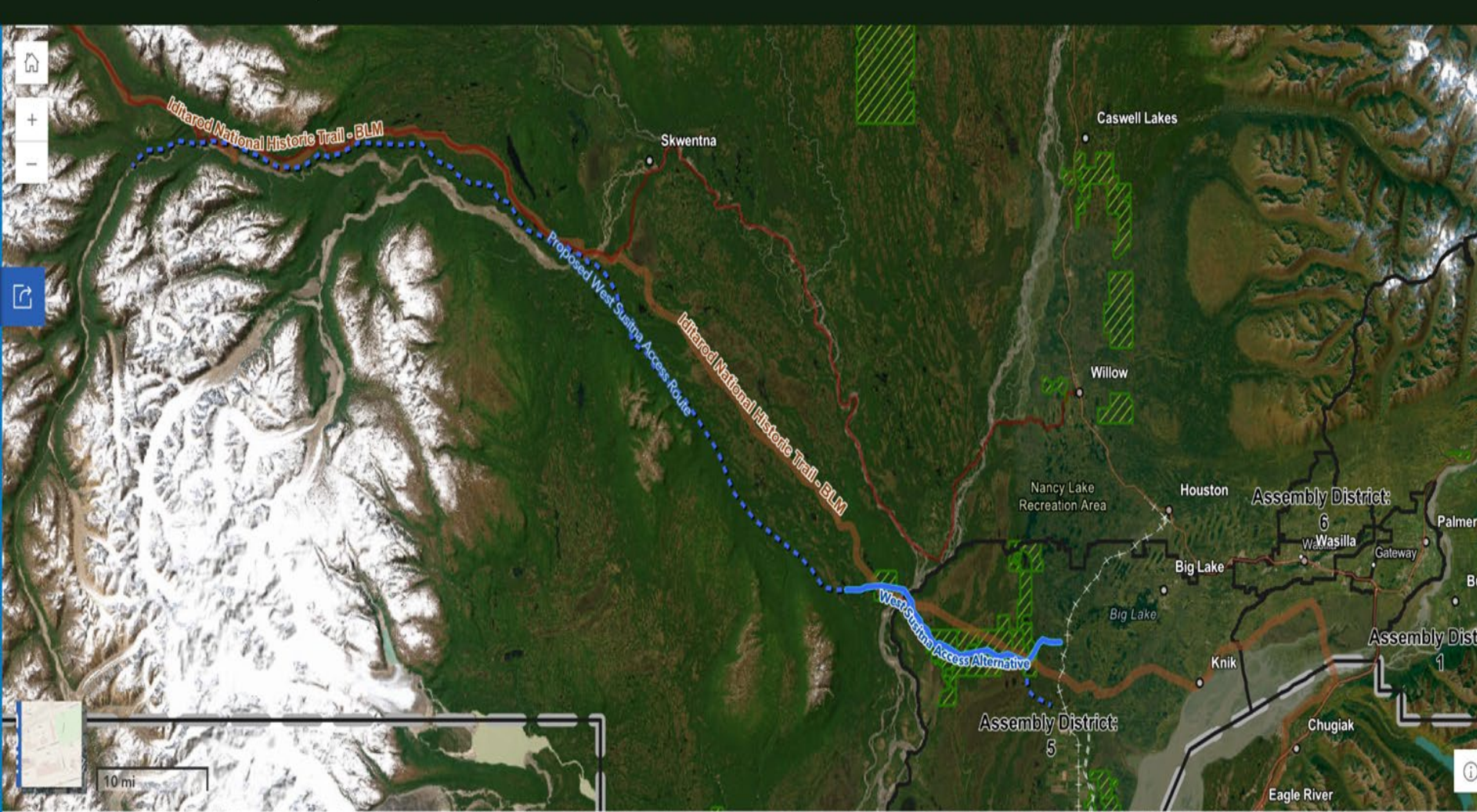
Margaret Stern
Program & Communications Director
Susitna River Coalition
margaret@susitnarivercoalition.org





Susitna River Coalition





Basic Road Stats

What?: 100+ mile gravel industrial access corridor.

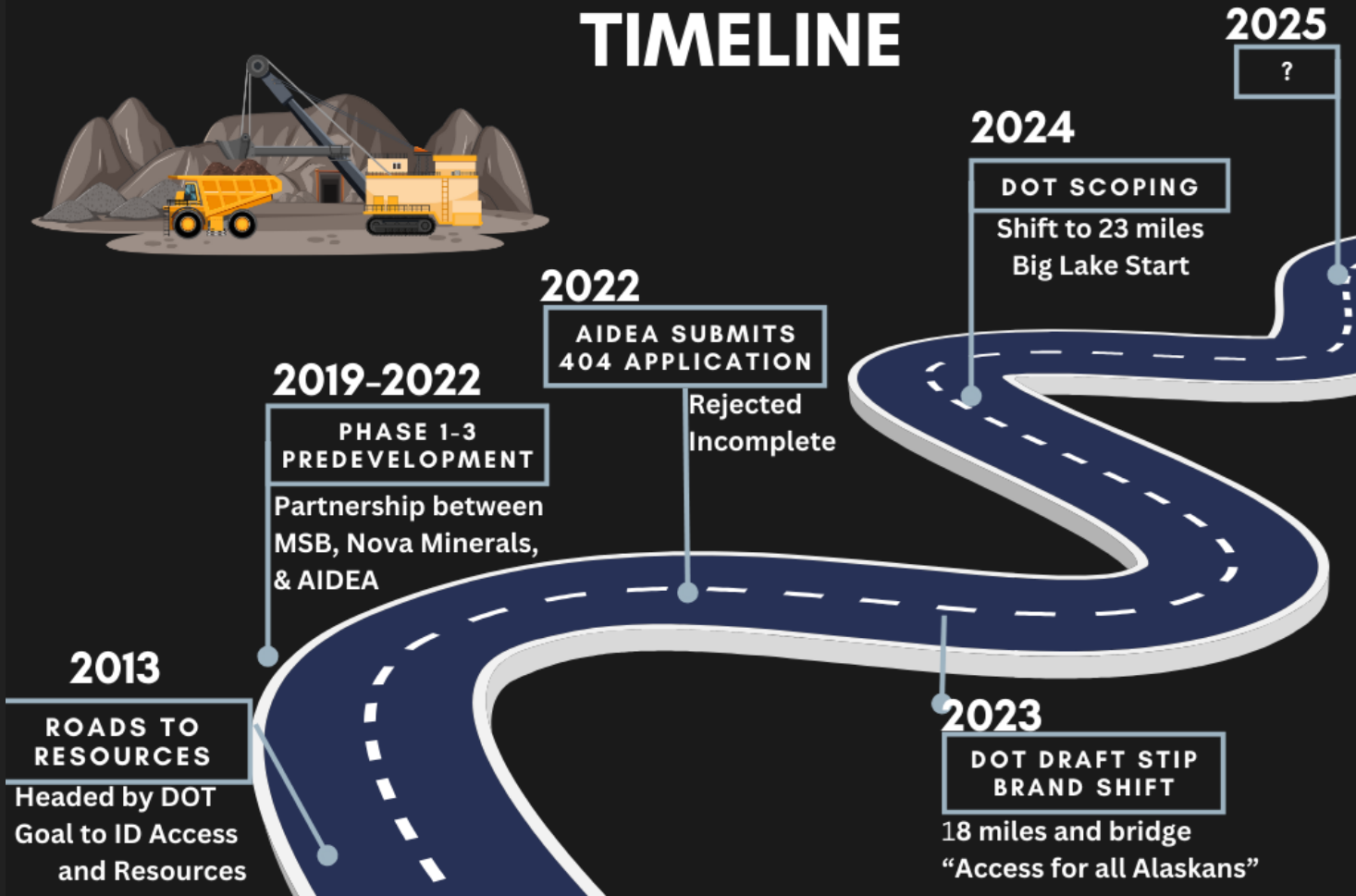
Who?: AIDEA , the Mat Su Borough, NOVA Minerals (An Australian gold mining corporation), U.S. Gold Mining (Canadian Gold mining corporation), and AKDOT&PF

Public V Private: Public portion the 23- mile DOT portion— the rest private

Where?: Begins in Big Lake and ends at the Estelle Mining District strip near Rainy Pass Lodge

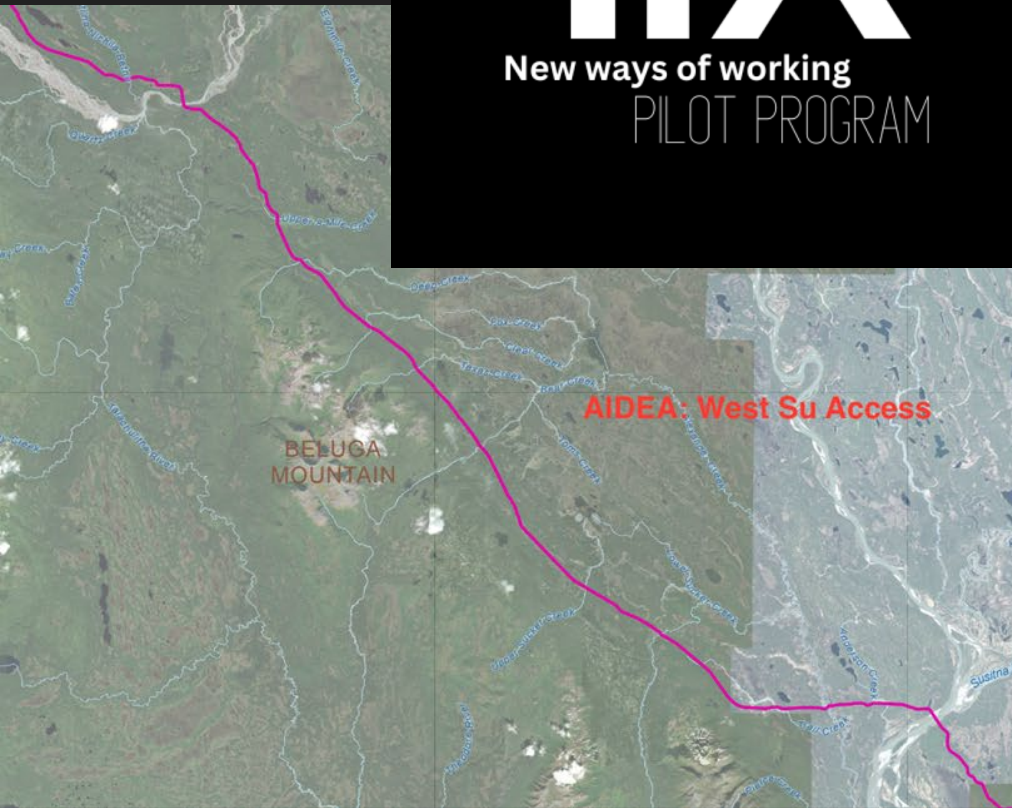
Price Tag: AIDEA Current cost est. \$450 million for an industrial corridor in 2017 dollars. DOT is estimating \$75 million for the first 23 miles including a bridge across the Susitna.

WEST SUSITNA ACCESS TIMELINE



TrX

New ways of working
PILOT PROGRAM



OUTCOME focused,
versus process focused



“Public Access Road”



Fish Creek Timber Sales

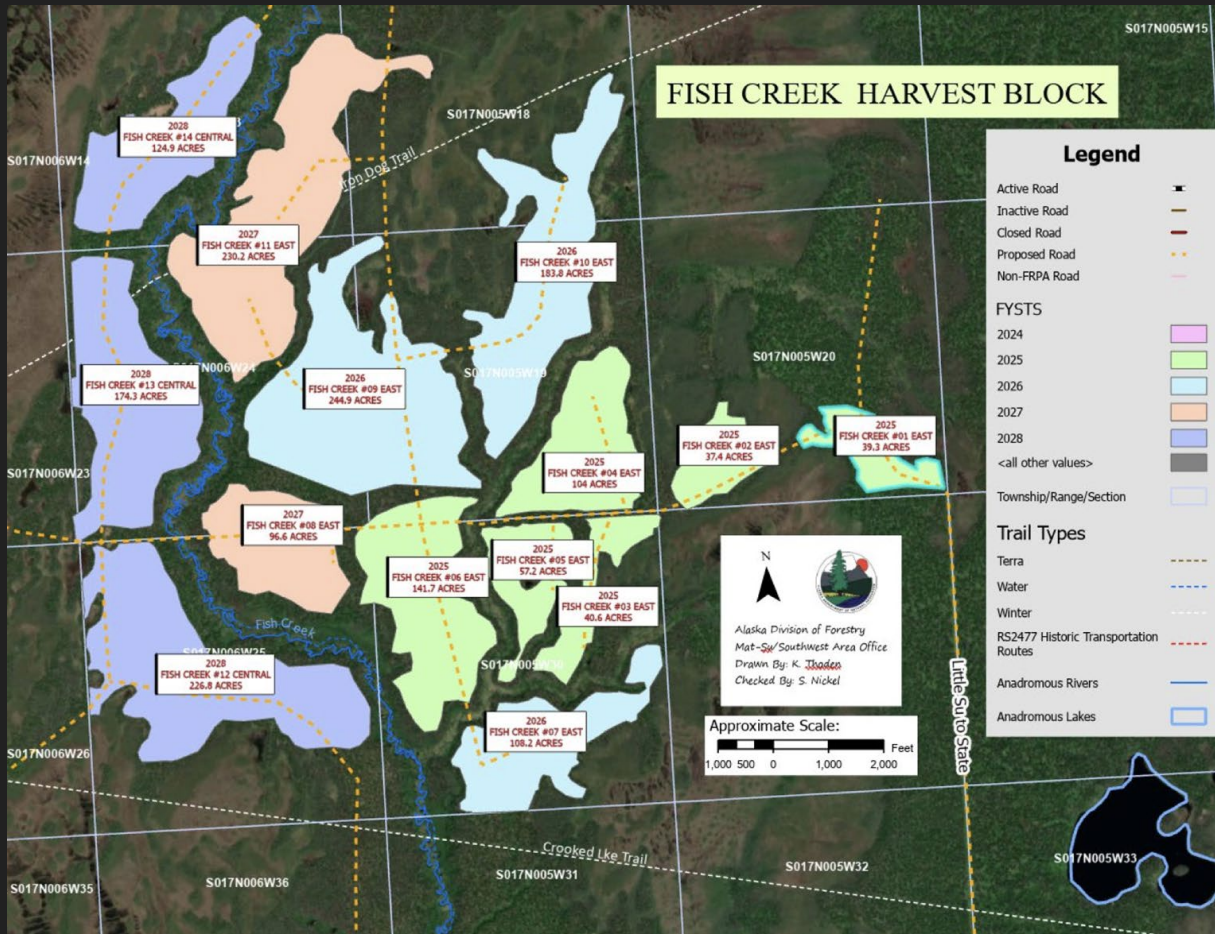
Who: Department of Natural Resources

What: Total 420 acres

When: Harvest over a 5 year period

Where: 13mi W Big Lake, off West Susitna Parkway

Why: Allows the bypass of some regs for West Sustina Access



Susitna Basin Oil and Gas Leases

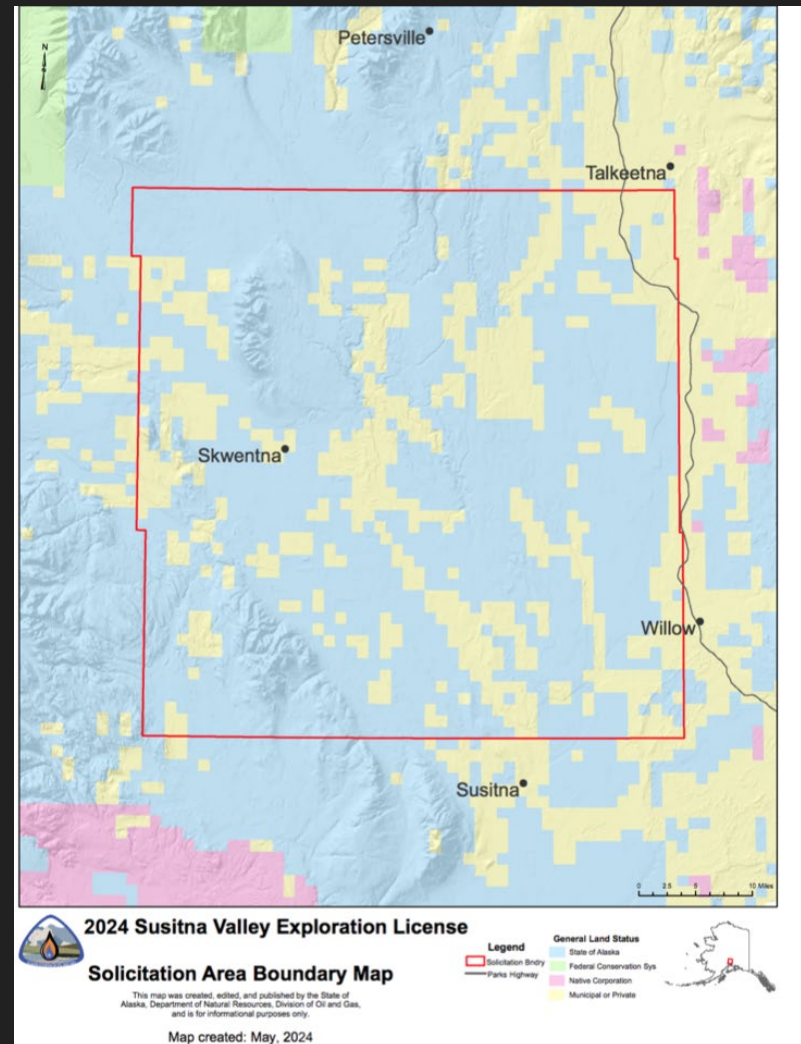
Who: DNR Division of Oil and Gas

What: 1.5 million acre Oil and Gas Exploration

Where: Huge area round Susitna & Yentna Rivers

When: 10 Year exploration license

Why: Partially overlaps with West Susitna, providing access



Donlin Natural Gas Pipeline

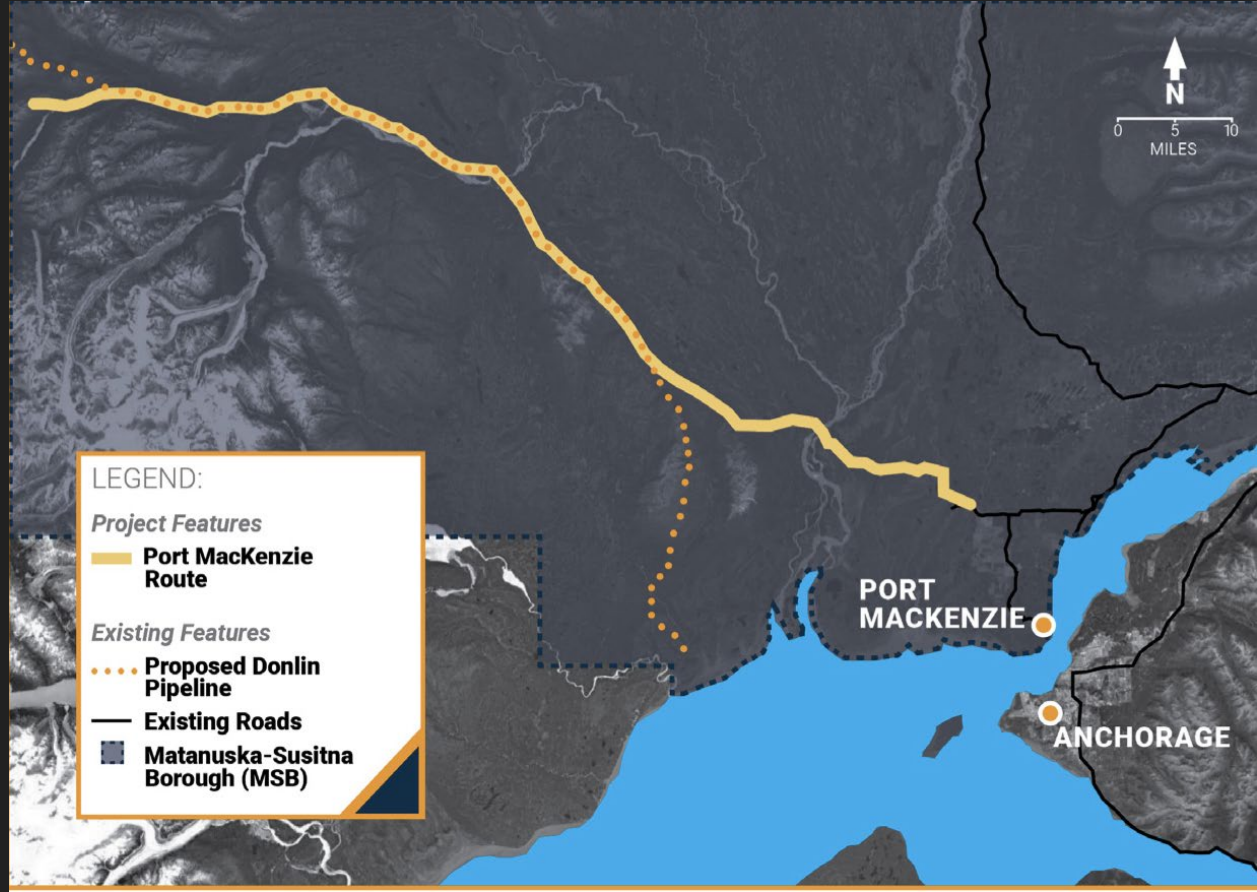
Who: Donlin Gold

What: 315 mile natural gas pipeline

Where: Beluga to Crooked Creek (Kuskokwim Trib)

When: Currently in litigation

Why: Power a proposed gold mine



Little West Susitna Wind Power Project

Who: Alaska Renewables

What: 28-64 wind turbines
11mi transmission lines
230-280 MW
33-35mi new roads

Where: Little Mt. Susitna

When: Construction begins
2025-2026, operational
2026-2027

Why: Power for railbelt &
mines



Legend

- Main Turbines
- Existing Road, Potentially Improved
- New Turbine Access Road
- New Electrical Transmission
- Existing Transmission Line
- Lease Areas
- Bridge Route
- East Theodore Route and South Spur Route



0 5 Miles
(At original document size of 8.5x11)
1:357,195

Notes

1. Coordinate System: NAD 1983 Alaska Albers
2. Background: Source: Esri, Maxar, Earthstar Geographics, and the GIS User Community
National Geographic, Esri, Garmin, HERE, UNEP-WCMC, USGS, NASA, ESA, METI, NRCAN, GEBCO, NOAA, increment P Corp.



Project Location
Little Mount Susitna, Alaska

Client/Project
Alaska Renewables, LLC.
Little Mount Susitna, Alaska

Figure No.
1

Title
Project Map

Coal Mining and Carbon Sequestration

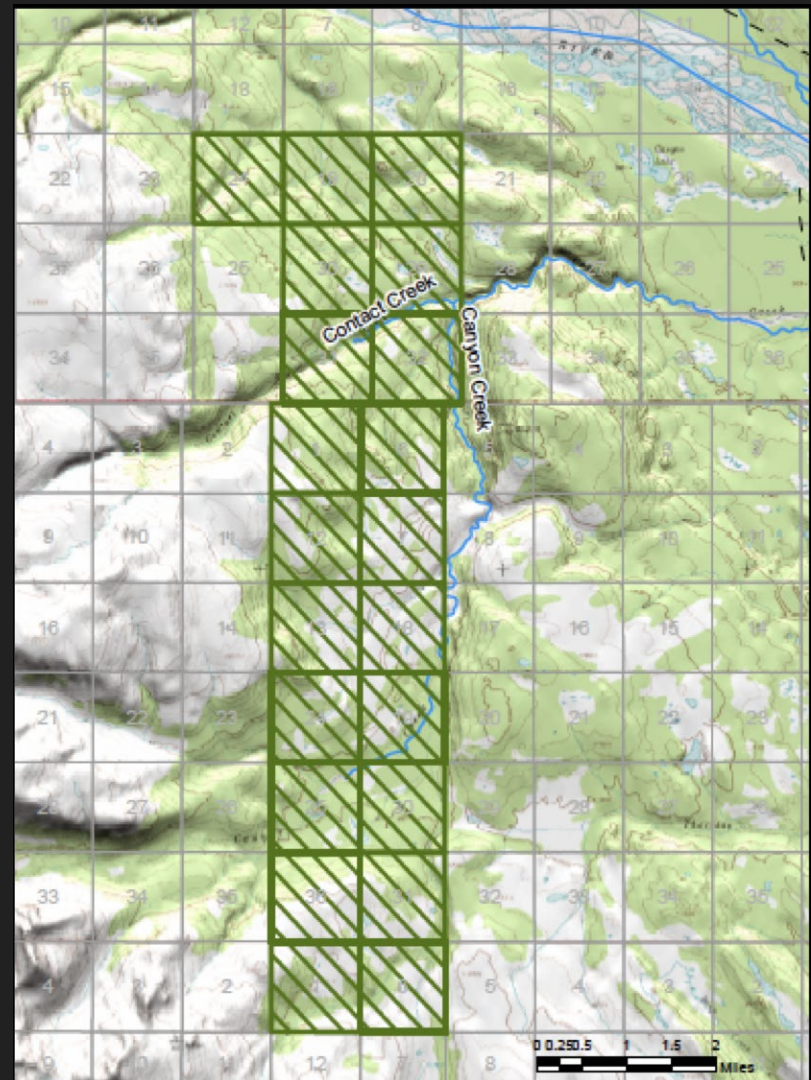
Who: Flatlands Energy

What: 400 MW coal-fired power plant utilizing CCS

Where: 18 miles W of Skwentna, Canyon Creek

When: Potentially 6-7 Years

Why: West Susitna needed for access



Gold and Hardrock Mining

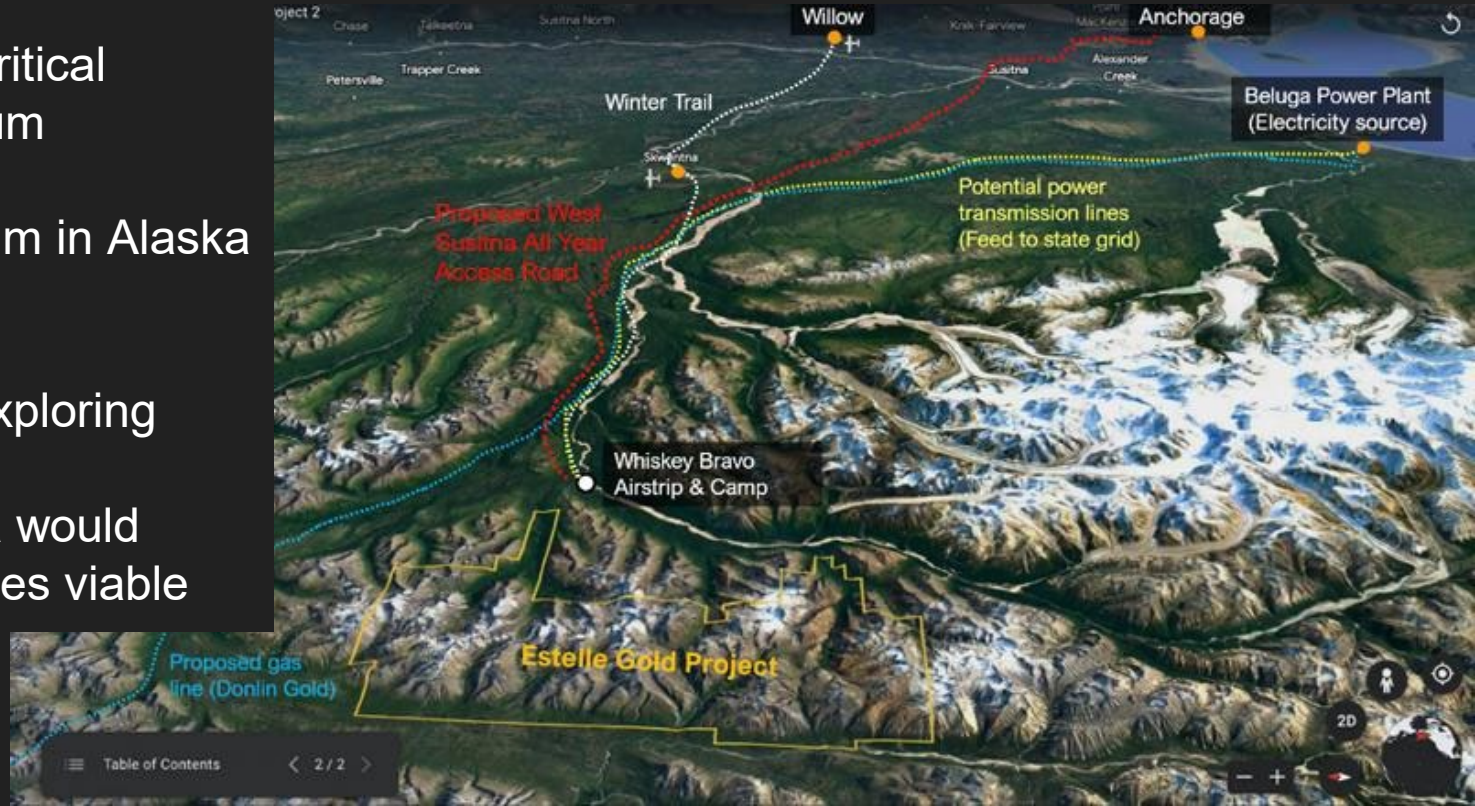
Who: NovaMinerals & USGold

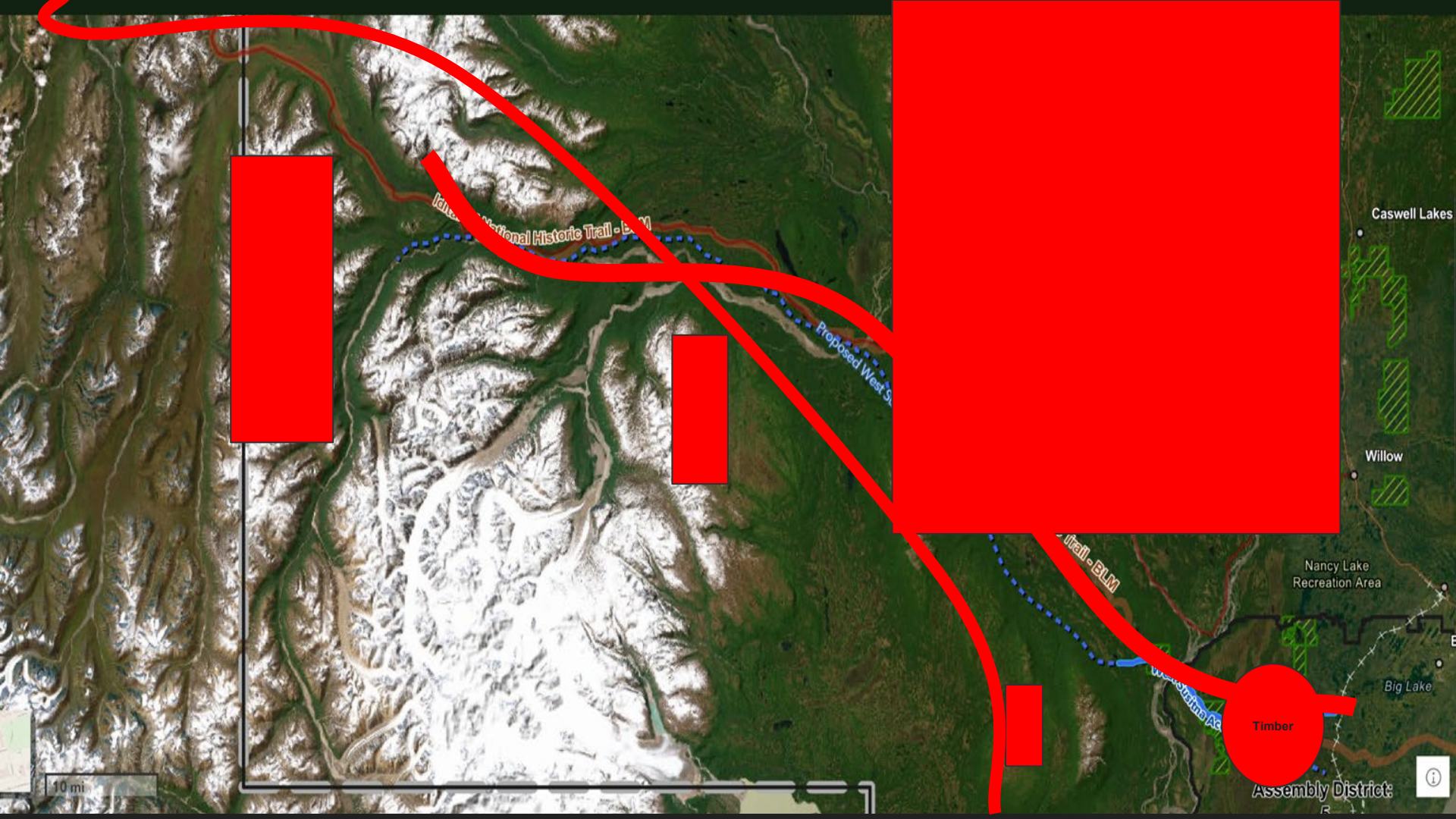
What: Gold and “Critical Minerals” like Stibium

Where: Estelle Claim in Alaska Range

When: Currently Exploring

Why: West Susitna would allegedly make mines viable





**What is the Future of
the Susitna that YOU
would like to see?**

