

Tyonek Tribal Conservation District

Anadromous Fish and Elodea Surveys

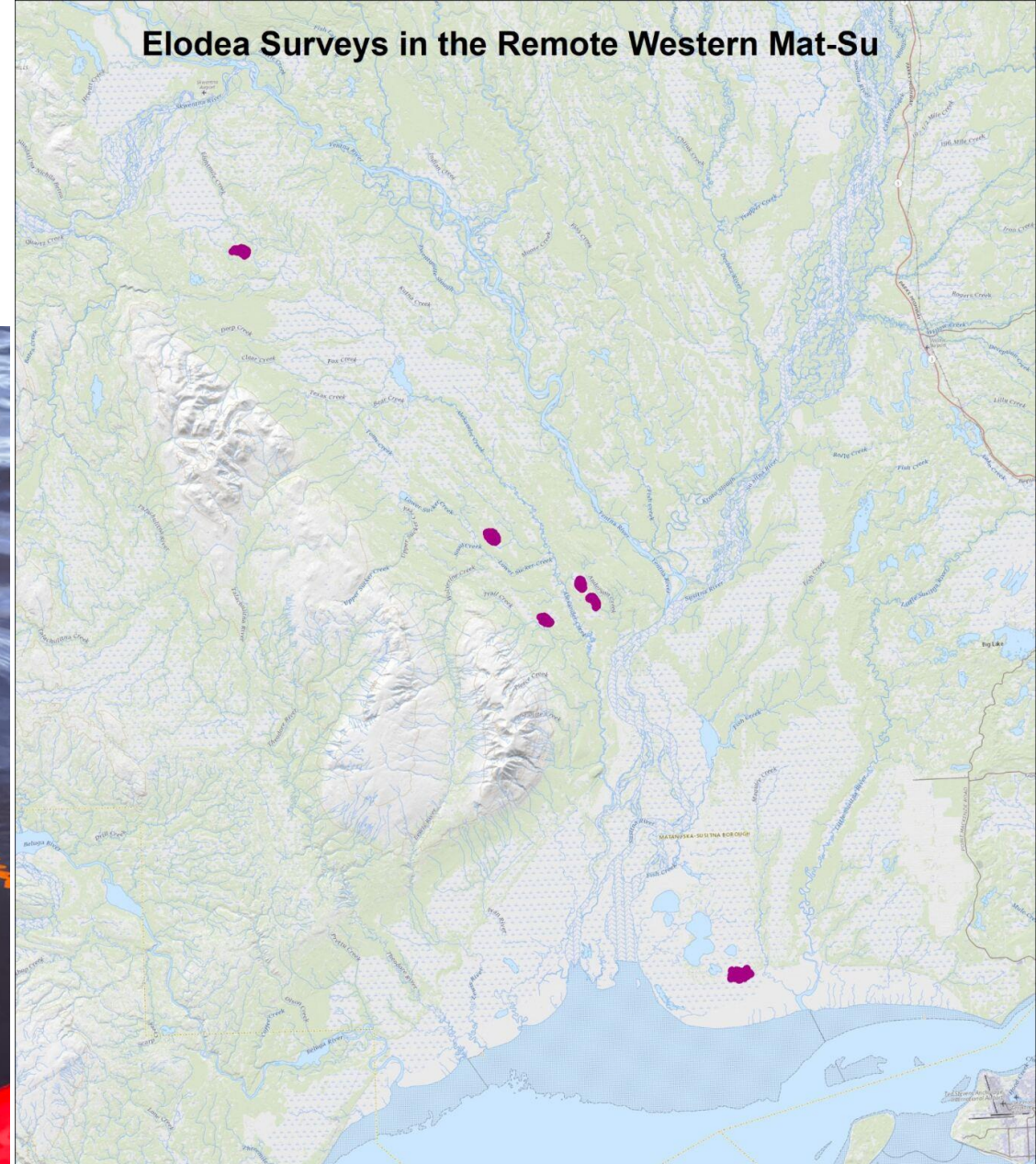
2023



Methods




2022 Elodea surveys



0 1.75 3.5 7 Miles

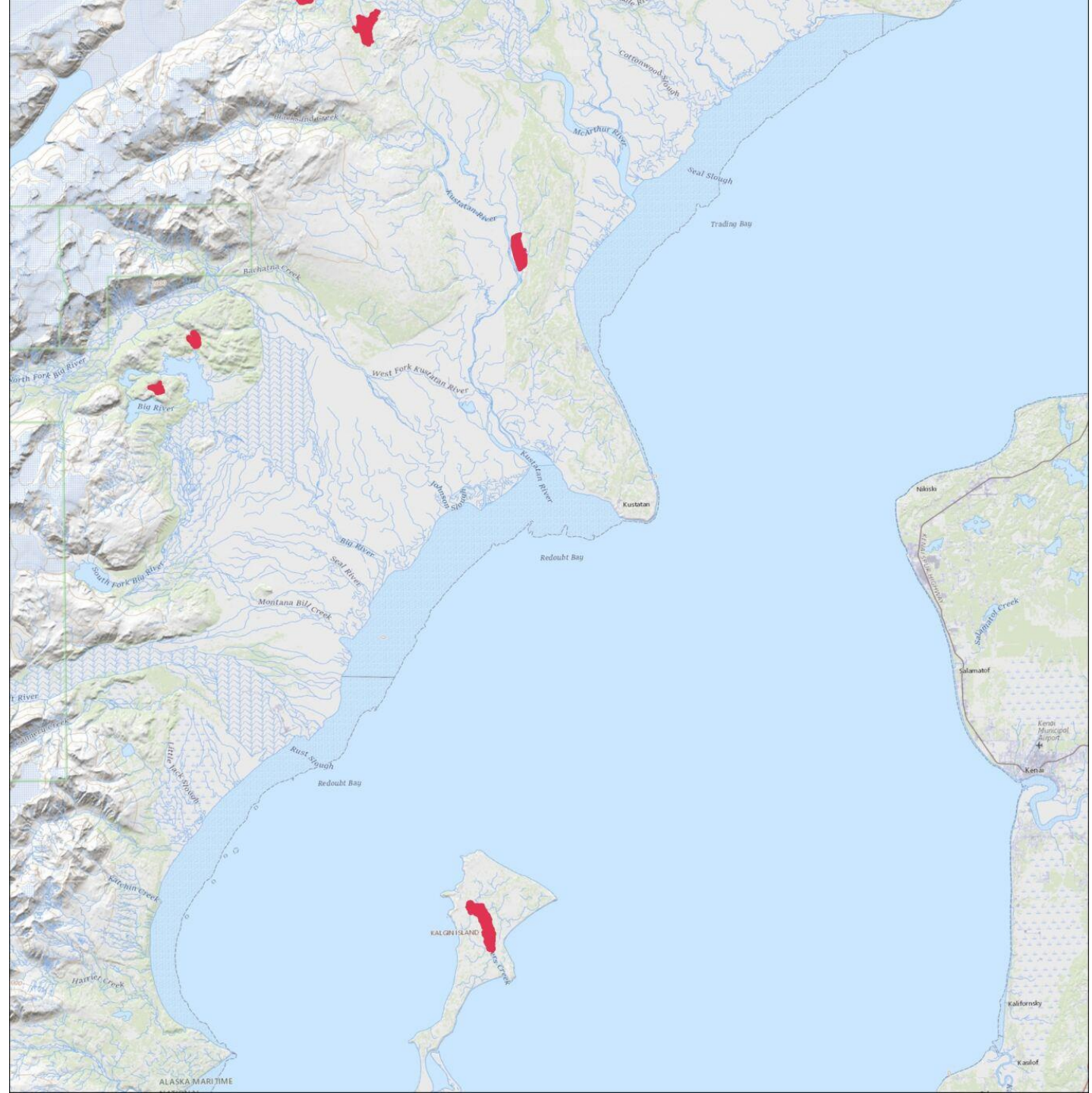
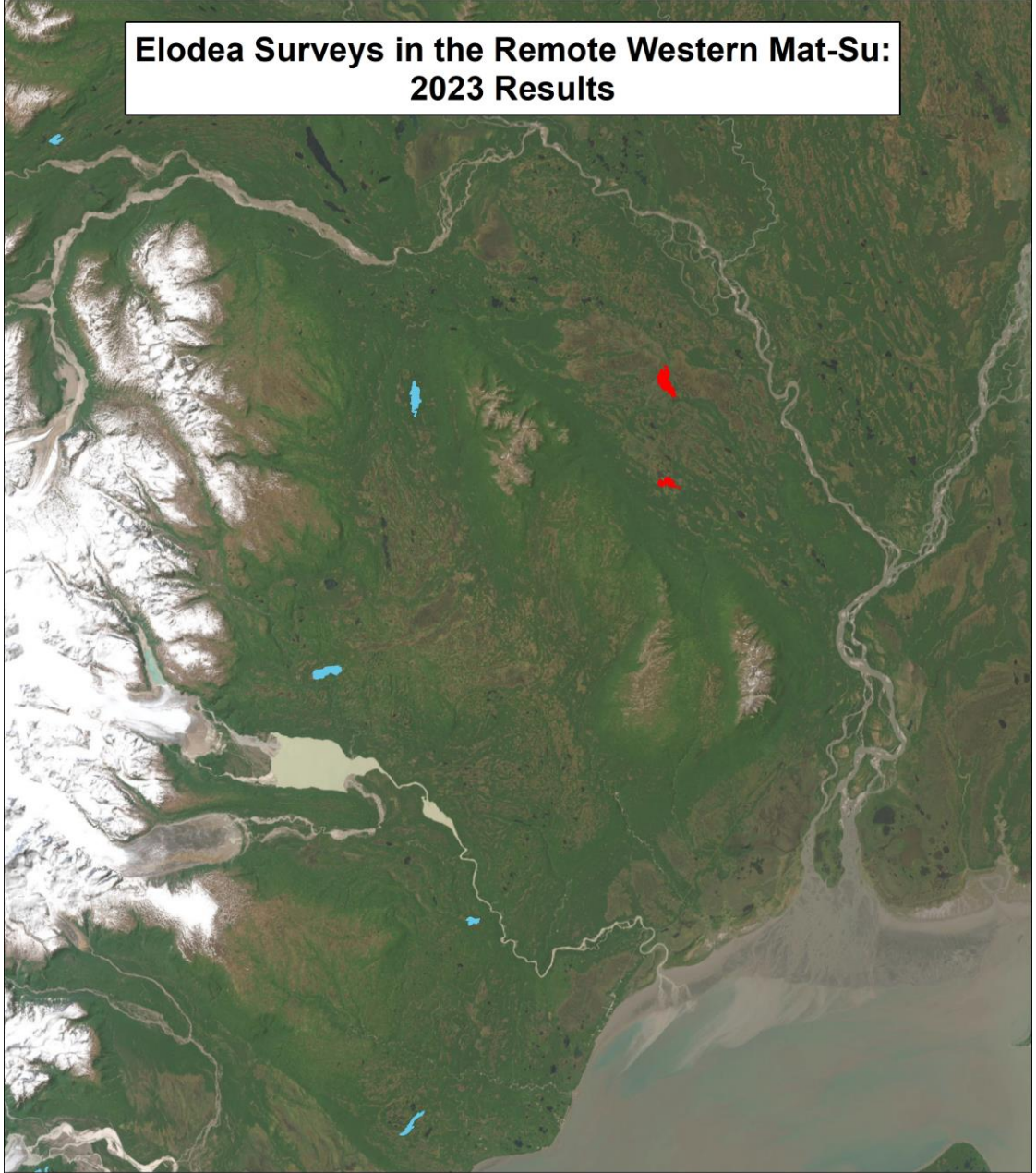
Date: 12/13/2022
Jillian Jablonski

Legend

 Surveyed in 2022



Elodea Surveys in the Remote Western Mat-Su: 2023 Results



Jillian Jablonski
Date: 11/3/2023

0 2.25 4.5 9 Miles

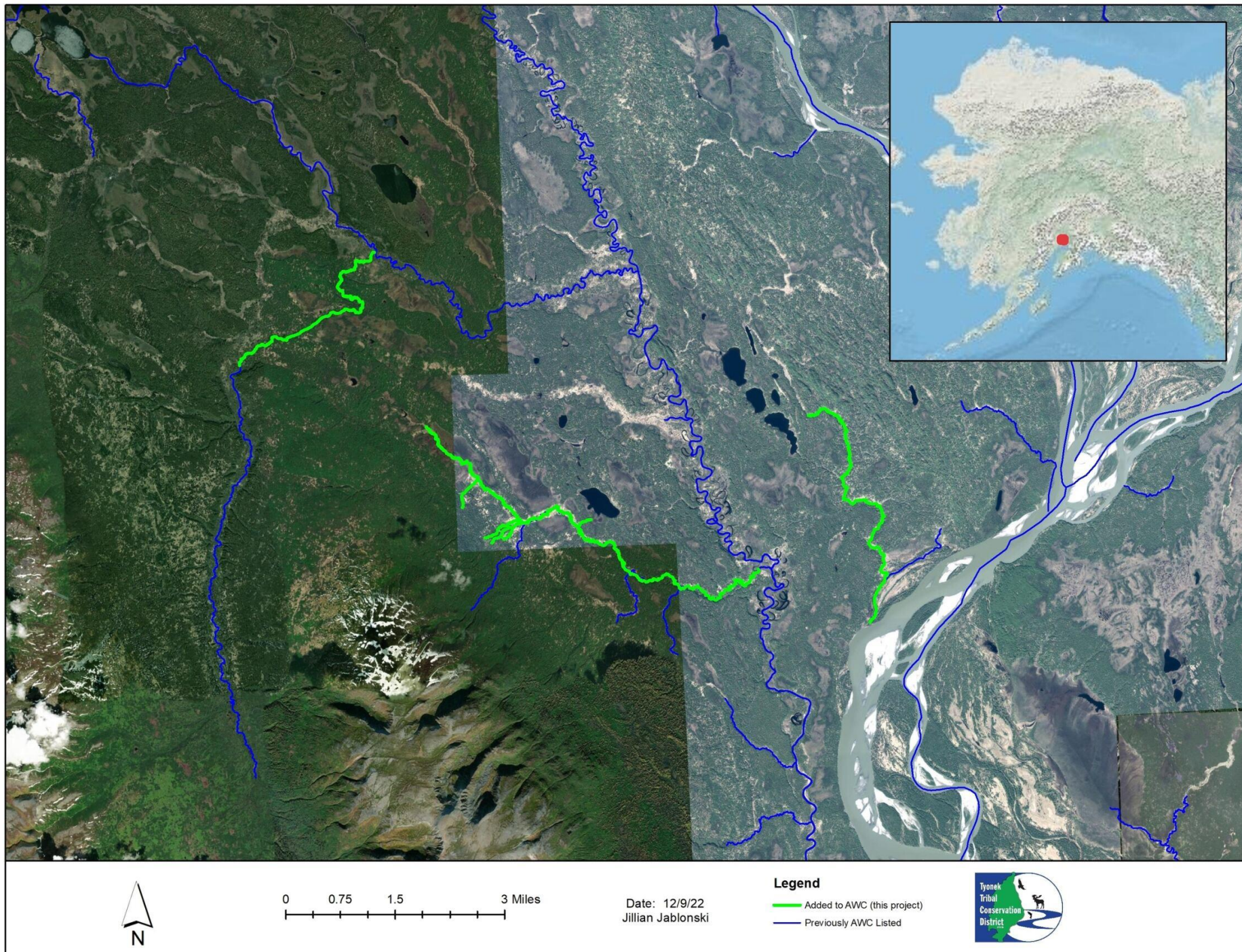
Legend

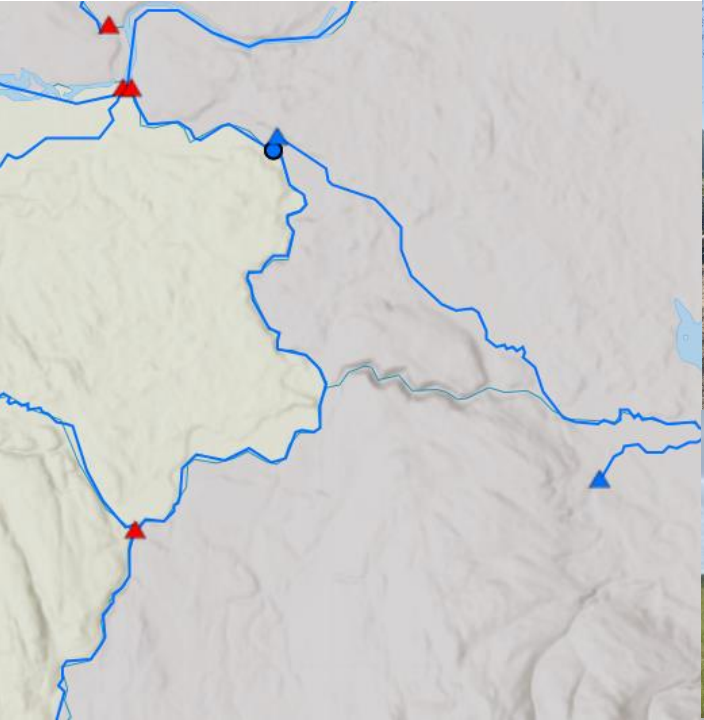
- 2023 Elodea Surveys
- Alexander, Sucker Lakes

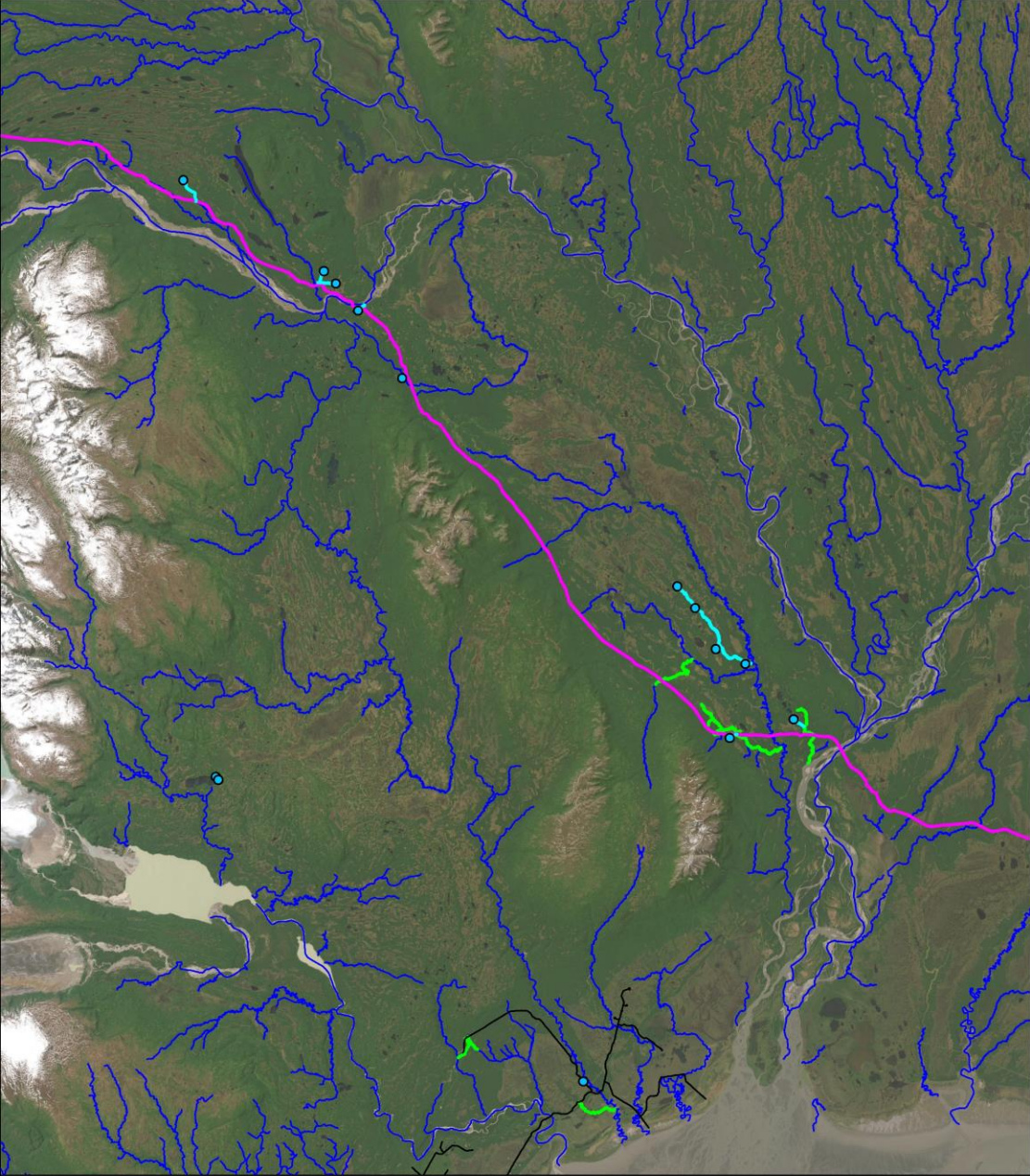
Community education, and documentation of the native plant assemblages



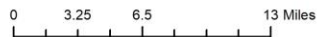
2022 AWC Additions -28.4 Miles





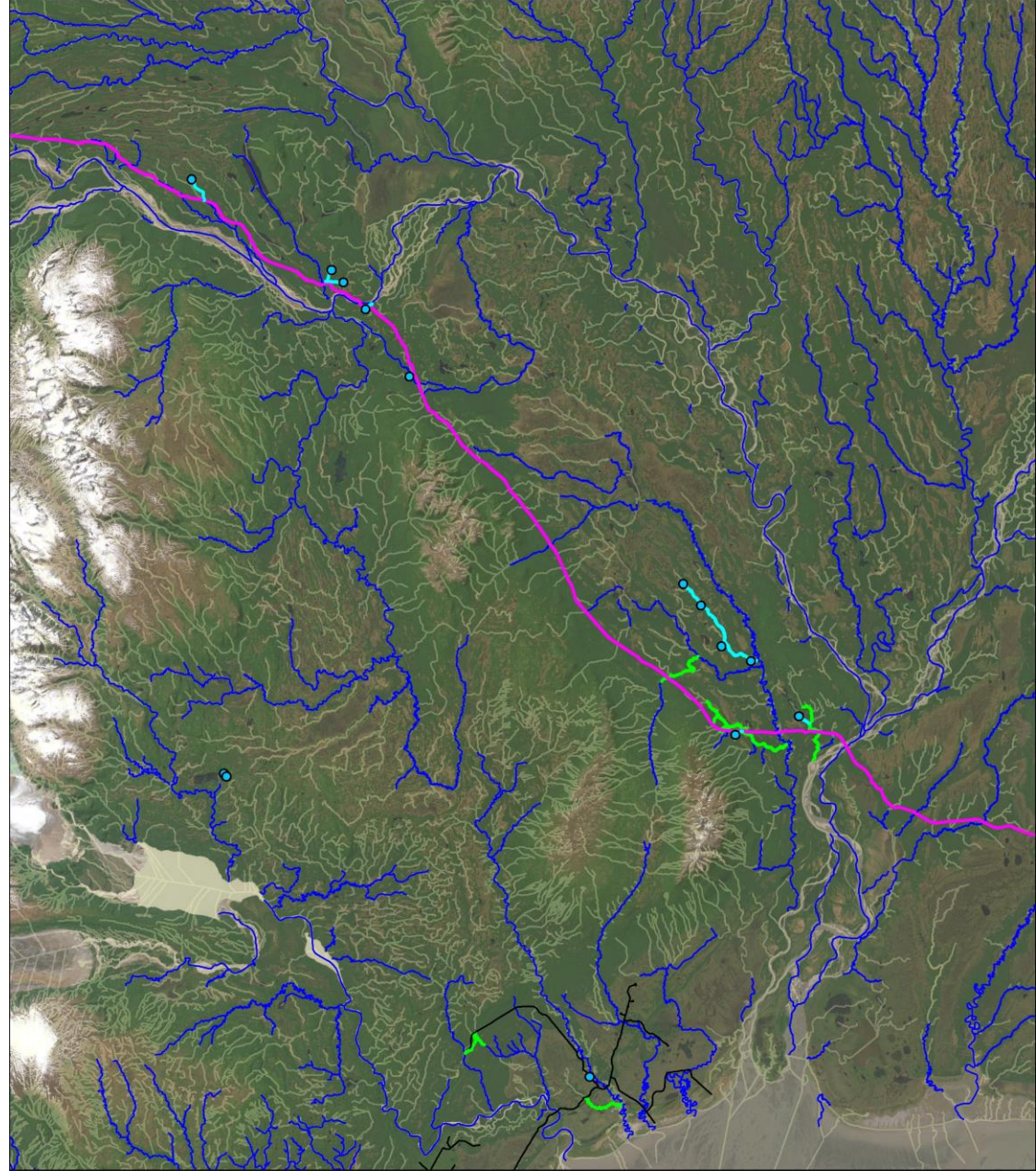


By: Jillian Jablonski
Date: 11/2/23



Legend

- 2023 AWC Points
- Added in 2022
- Added in 2023
- AWC_stream
- West Su Access
- Tyonek_roads



By: Jillian Jablonski
Date: 11/2/23



Legend

- Added in 2022
- 2023 AWC Points
- Added in 2023
- AWC_stream
- West Su Access
- NHDFlowline
- Tyonek_roads

Where on the landscape does salmon habitat end?



Timing,
Conditions,
and
disturbances

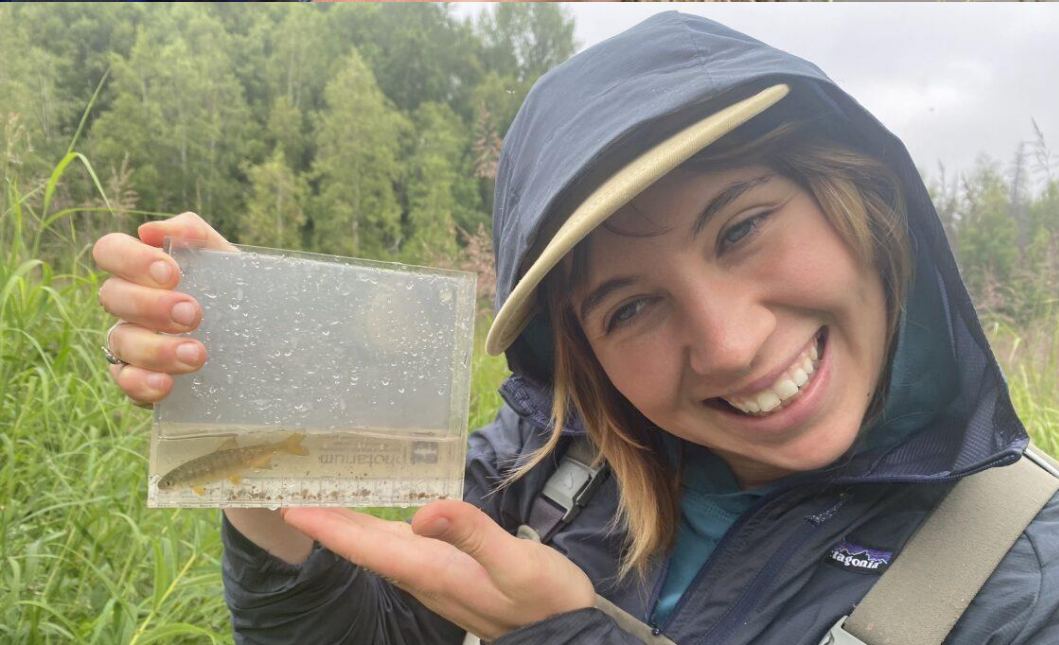






It only takes two fish,
but a ton of effort,
planning, luck, and
funding ...





Thank you!

Mat-Su
salmon
PARTNERSHIP

Native **V**illage of **T**yonek



Cook Inlet

AQUACULTURE ASSOCIATION



Questions?

Tyonek



TRIBAL
CONSERVATION
DISTRICT

Andy Wizik: awizik@ttcd.org