



Progress of the Mat-Su Basin Salmon Habitat Partnership

2014-2015

Jessica Speed, Mat-Su Salmon Habitat Partnership

November 19, 2015 Mat-Su Salmon Symposium

Palmer, Alaska

Mat-Su Salmon Partnership Representation

Category	Total #	Percentage
Non-profit	21	35%
Governmental (local, state, federal)	18	30%
Business (including consultants)	9	15%
Tribal	5	8%
Fishing (interest groups & guides)	5	8%
Academic	1	2%
Private individual	1	2%
	60	100%



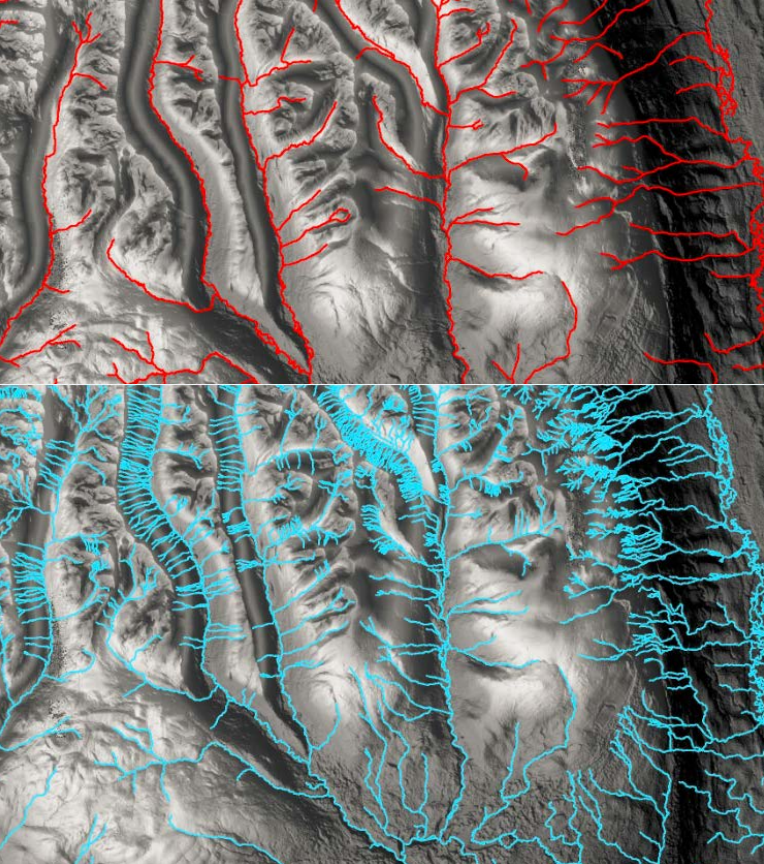


Together the Matanuska & Susitna watersheds total over 25,000 square miles



Partnership Progress ~ Science:

- Mapping streams to national standards
- Improvements in knowledge of juvenile salmon distribution, abundance and important overwintering areas
- Stream temperature monitoring and identification of cold water refugia



Partnership Progress ~ Conservation:

- 1,000 acres of important salmon habitat conserved
- Water reservations filed for Moose Creek & data collected on Kashwitna River and Little Willow Creek
- 84 stream miles & 6 streams added to the Anadromous Waters Catalog





Partnership Progress ~ Restoration:

- 14 barrier removals opened up 49.5 miles of upstream habitat and 857 acres of lakes.
- 11 shoreline restoration projects on public and private land
- Detection, education, eradication & containment of Invasive aquatic species



Partnership Progress ~

Information Sharing & Education:

Partnership:

- Annual Mat-Su Salmon Symposium
- Summer Site Tour
- Wildlife Wednesday Series

Partner campaigns & initiatives:

Clean Boating
Kingmakers
Septic Smart

Baby Salmon Live Here
Susitna Salmon Center
Salmon in the Classroom



Thank you!

Mat-Su
salmon
PARTNERSHIP



jspeed@tnc.org

865-5713

www.matsusalmon.org