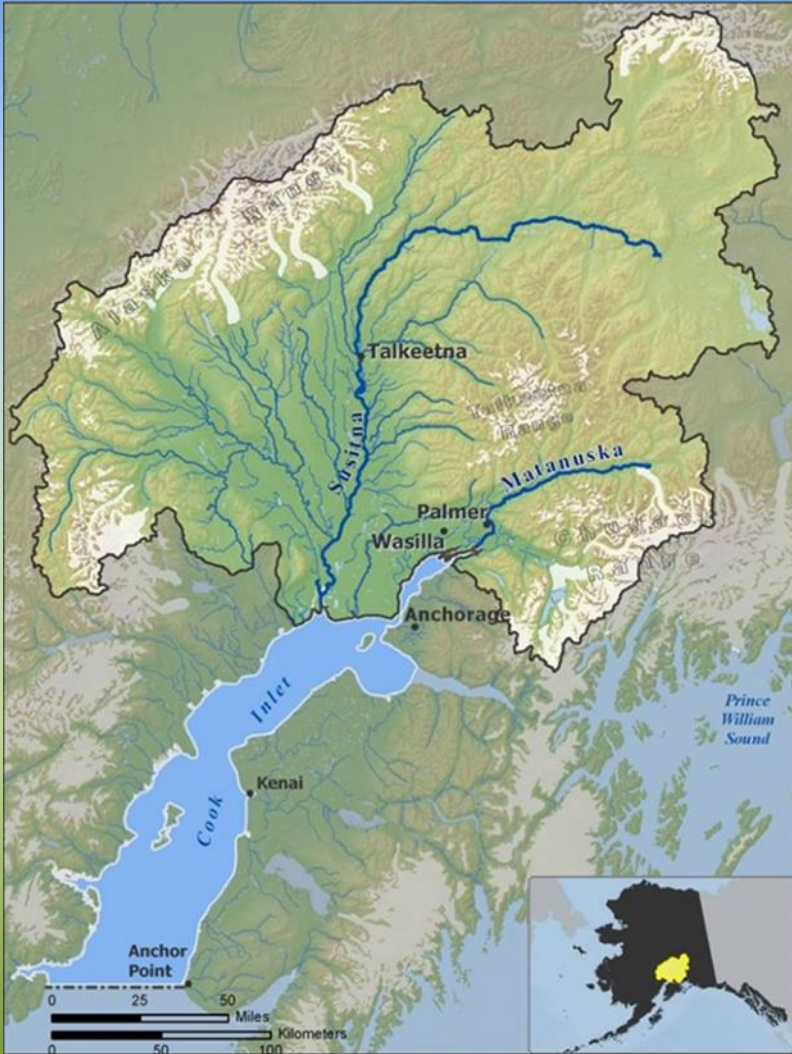


Systematic Validation of Modeled Hydrography in the Mat-Su Basin Using Field Reconnaissance and Image Interpretation

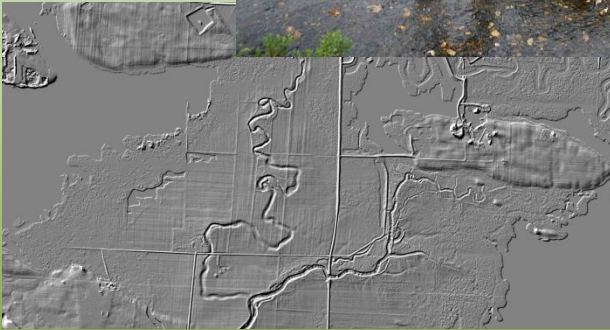
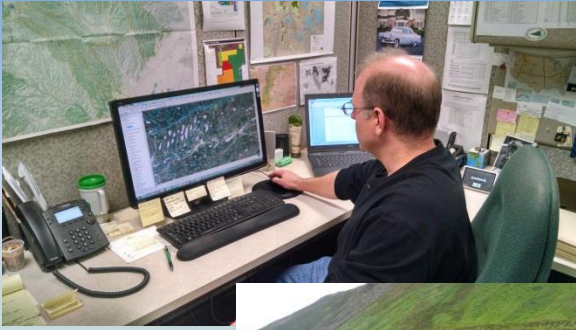
2014 Mat-Su Salmon Symposium
November 18, 2014
Palmer, AK

Introduction



- Availability of high resolution elevation and imagery data has made a basin-wide hydrography update possible
- Mat-Su LiDAR, SDMI SPOT and IfSAR, Gracz and NWI wetlands, modeled flow lines, 2D breaklines
- AK Hydro and NHD data standards, stewardship initiatives, tools and techniques

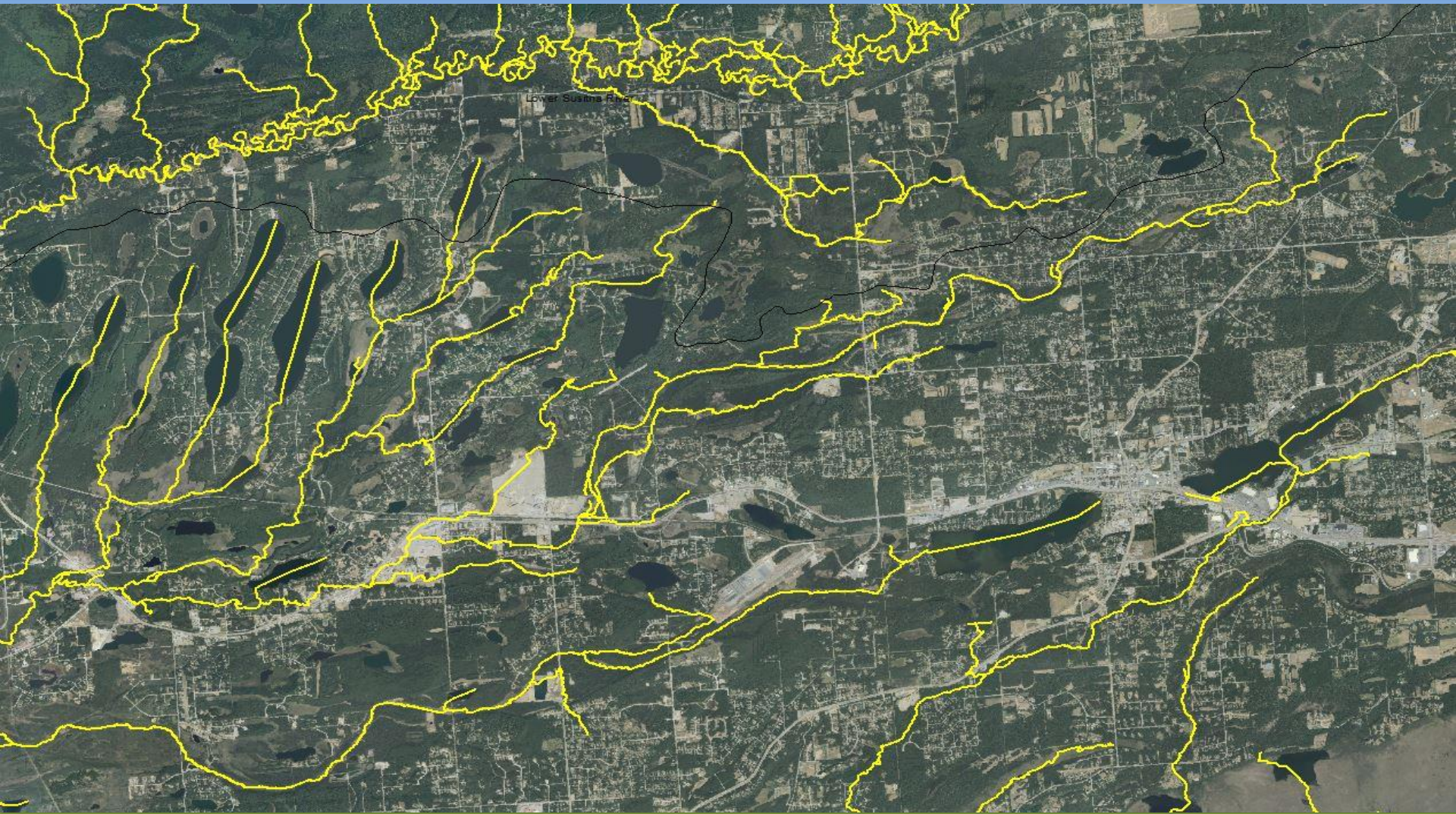
Introduction



Hydrography Validation

- Independent photogrammetric review of modeled streams
- Incorporate reconnaissance level fieldwork to verify ground conditions
- Utilize collateral spatial databases to verify stream location and flow paths
- Once validated stream network will be conflated to the USGS NHD from AK Hydro

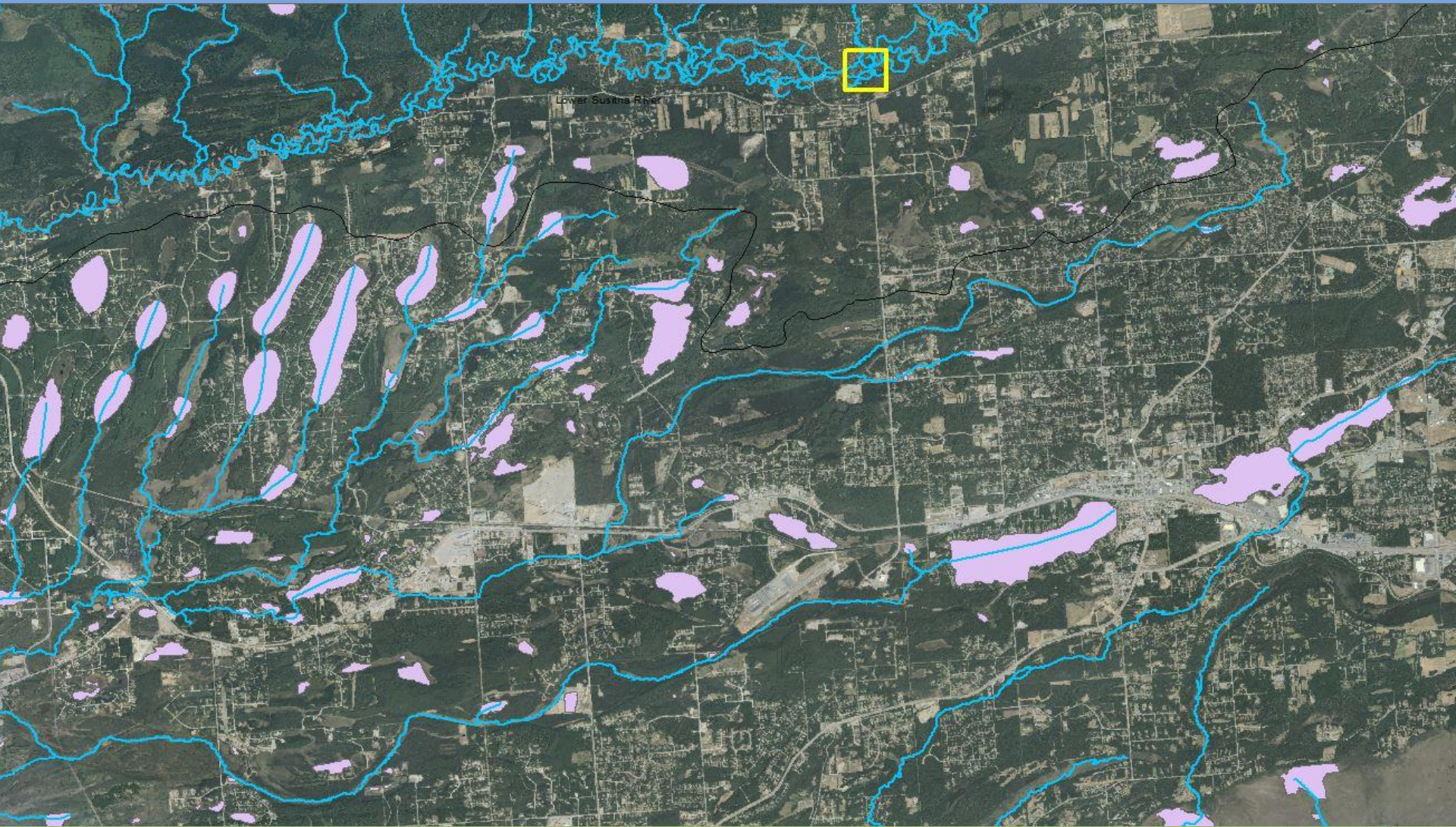
Starting Point



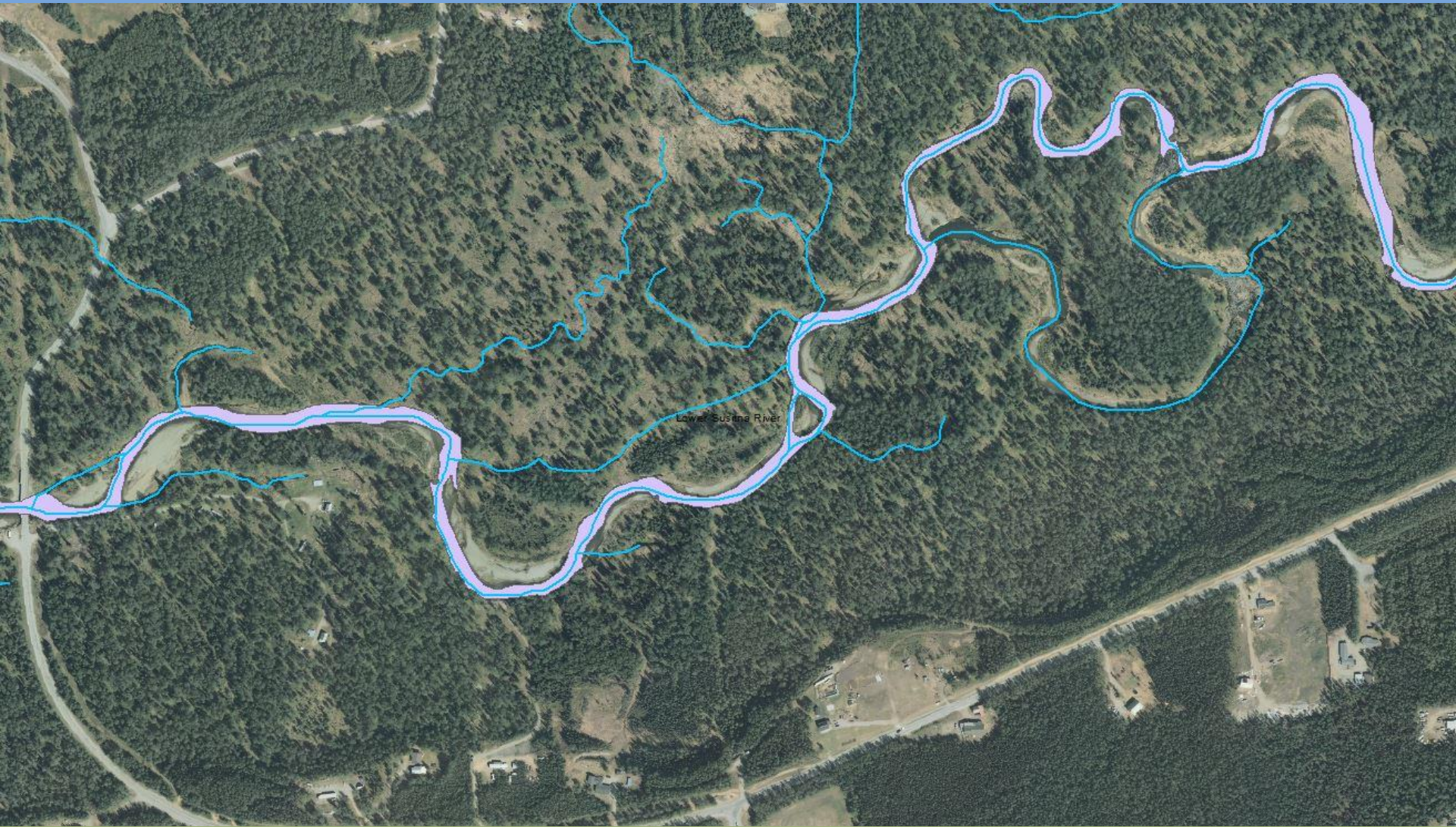
GeoSpatial Services



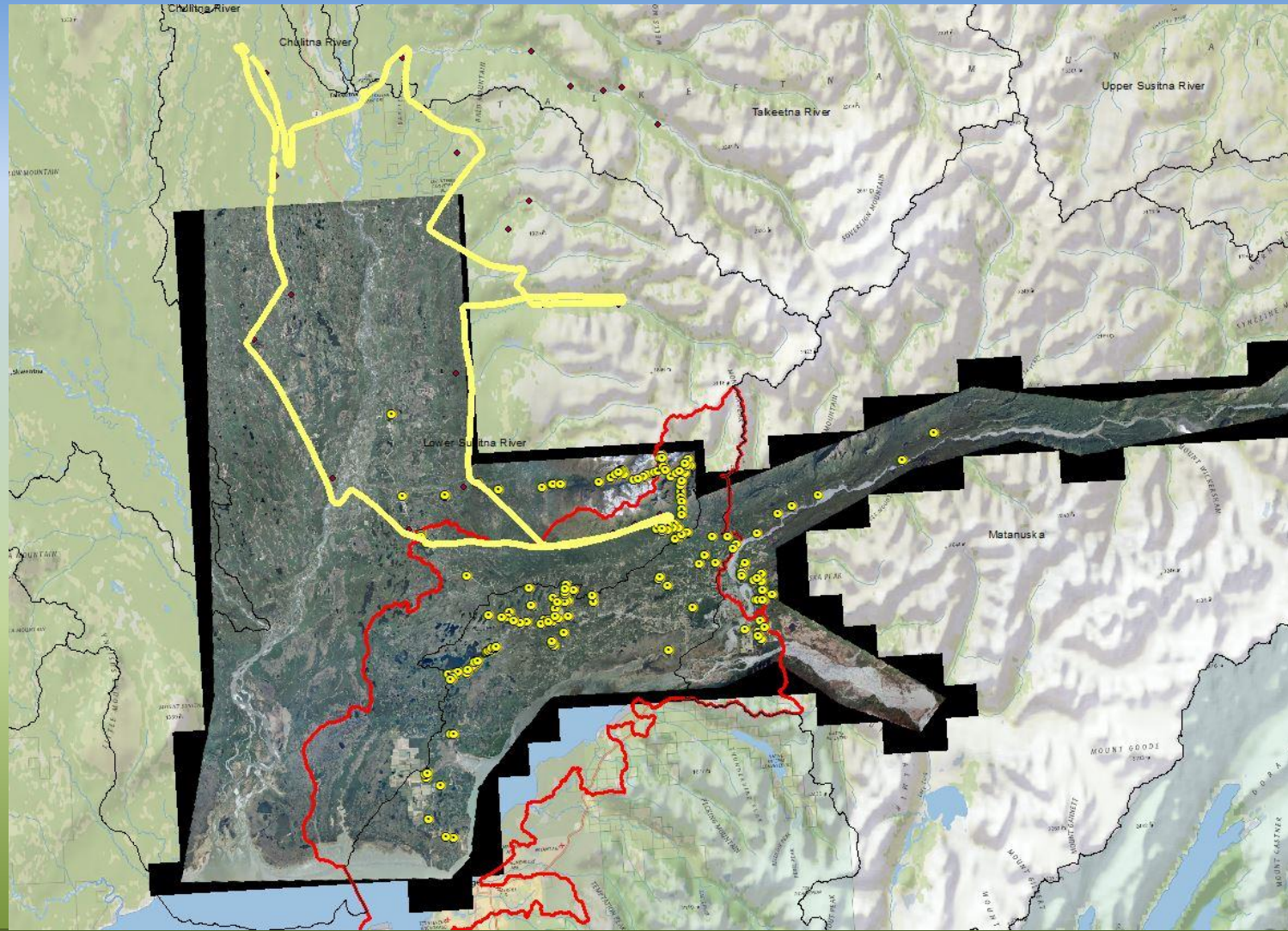
Final Edits



Level of Detail



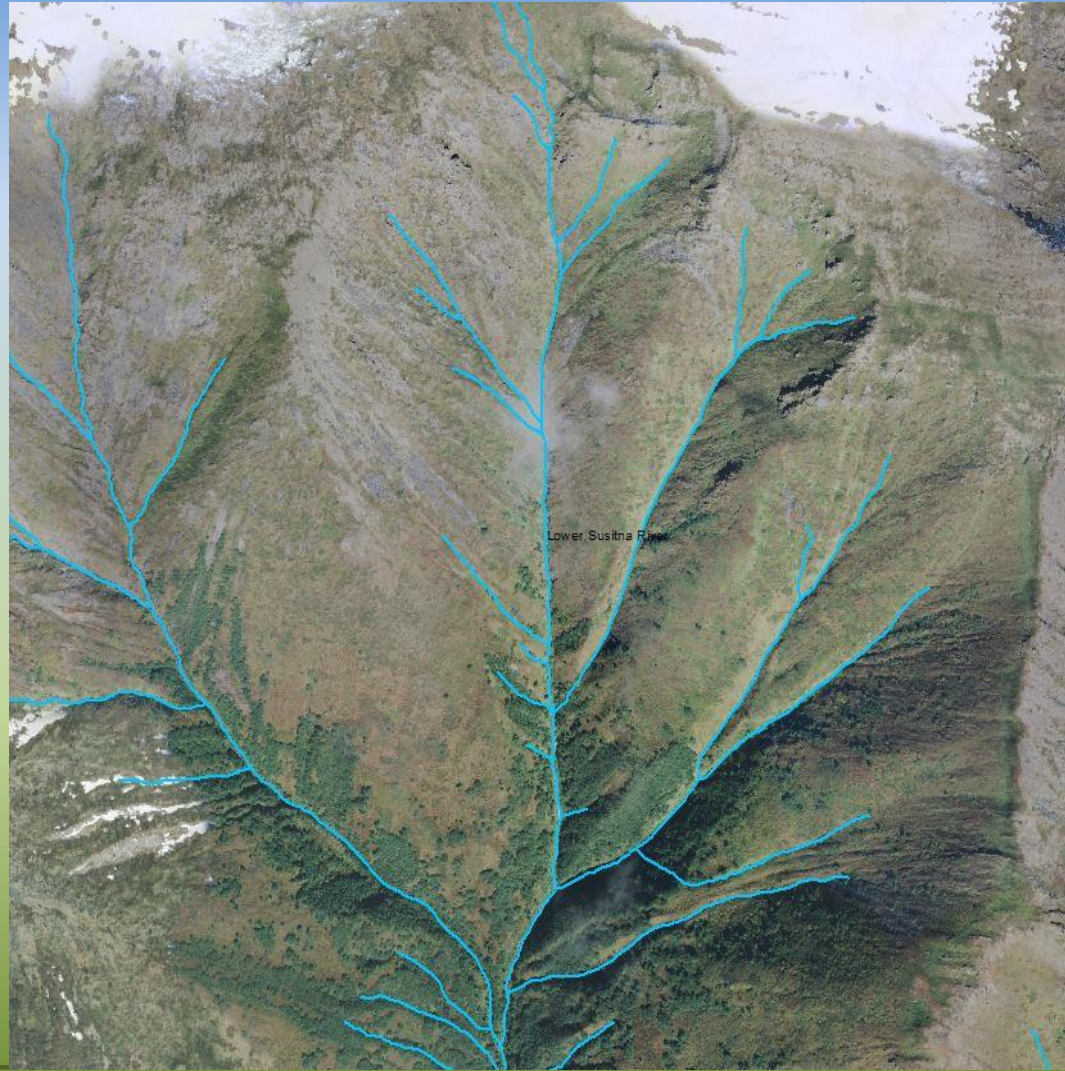
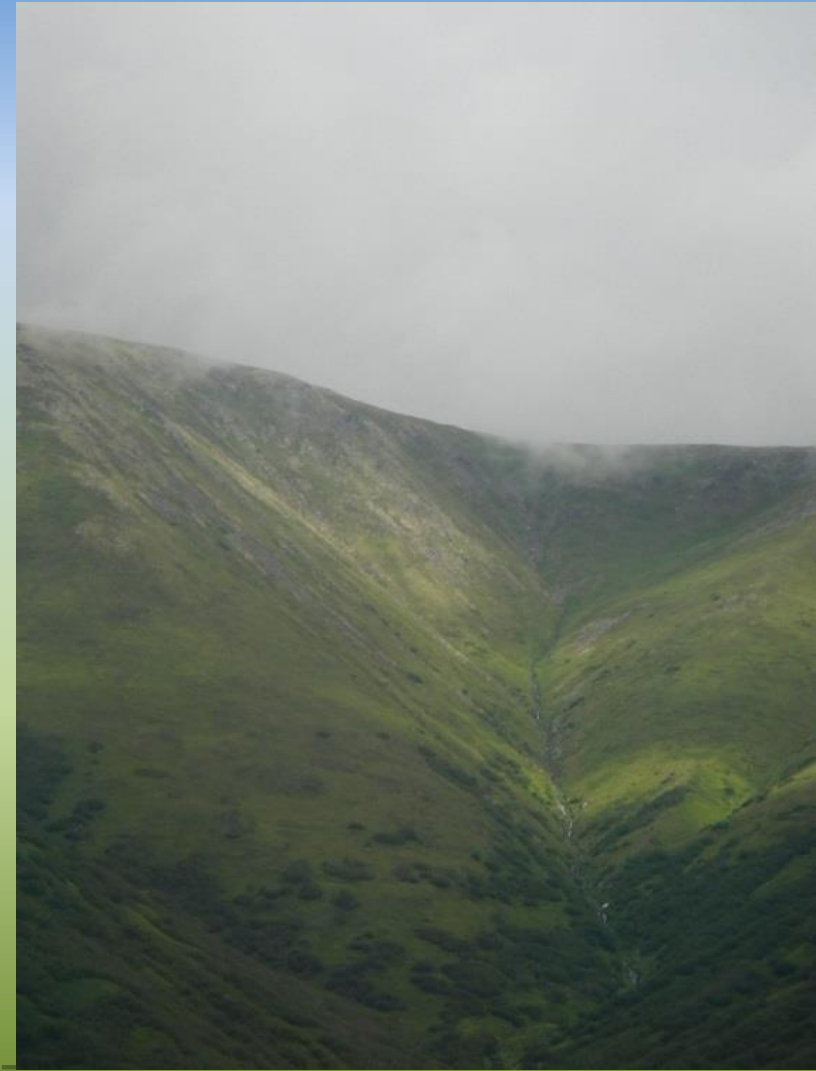
Field Reconnaissance



Field Reconnaissance



Field Reconnaissance



Field Reconnaissance

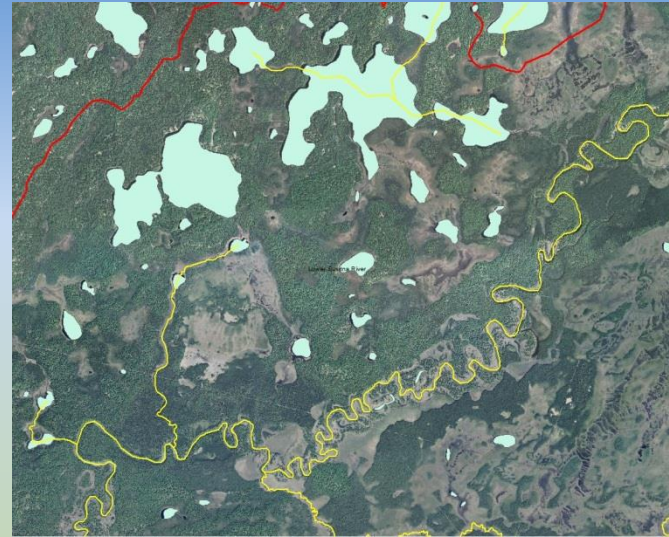


Collateral Data

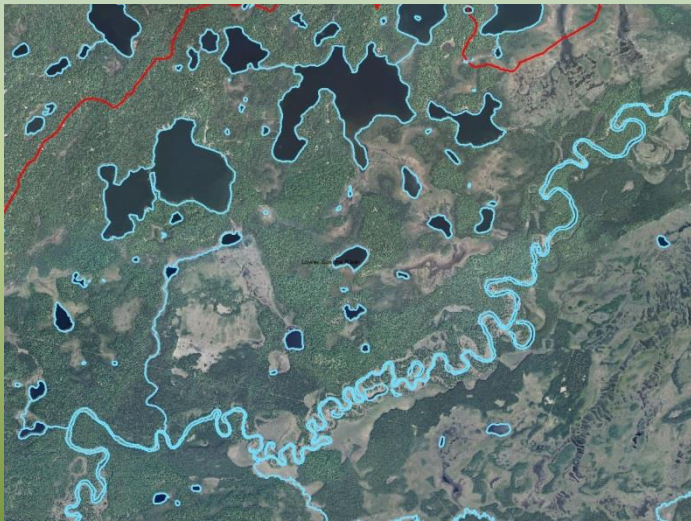
AWC



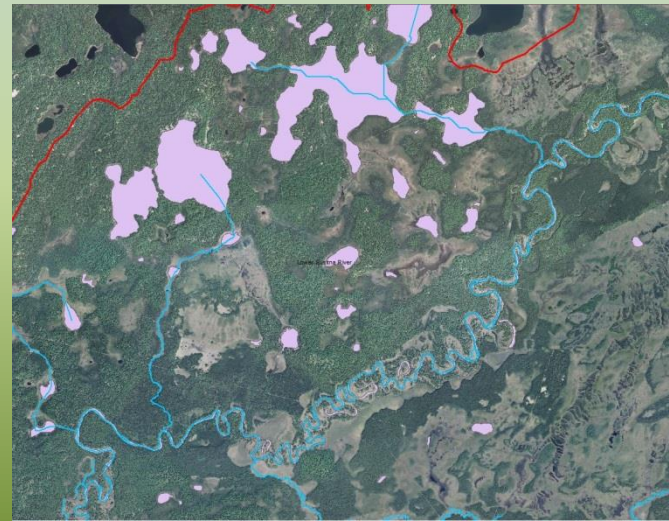
NHD



MSB



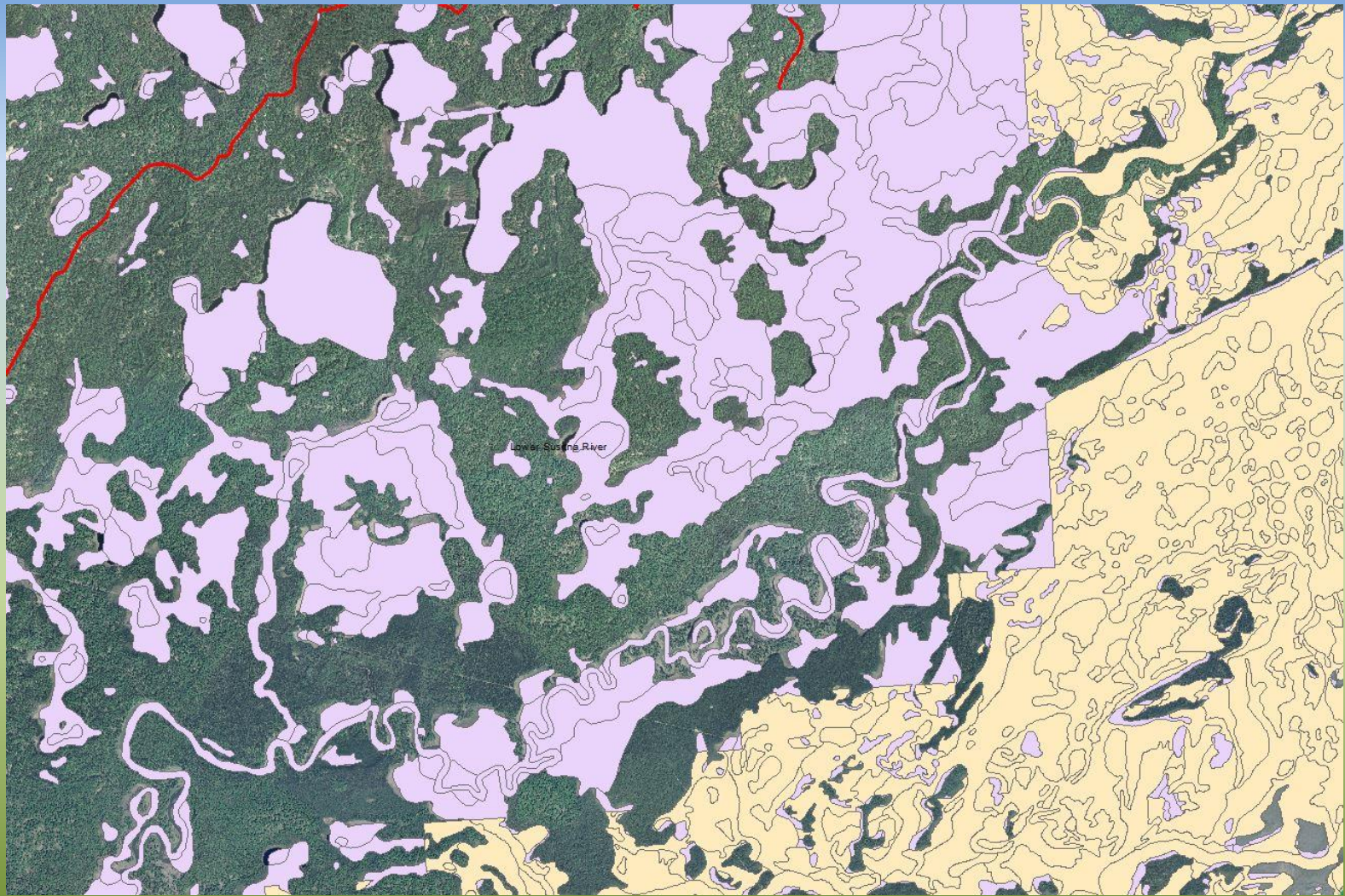
New



Collateral Data



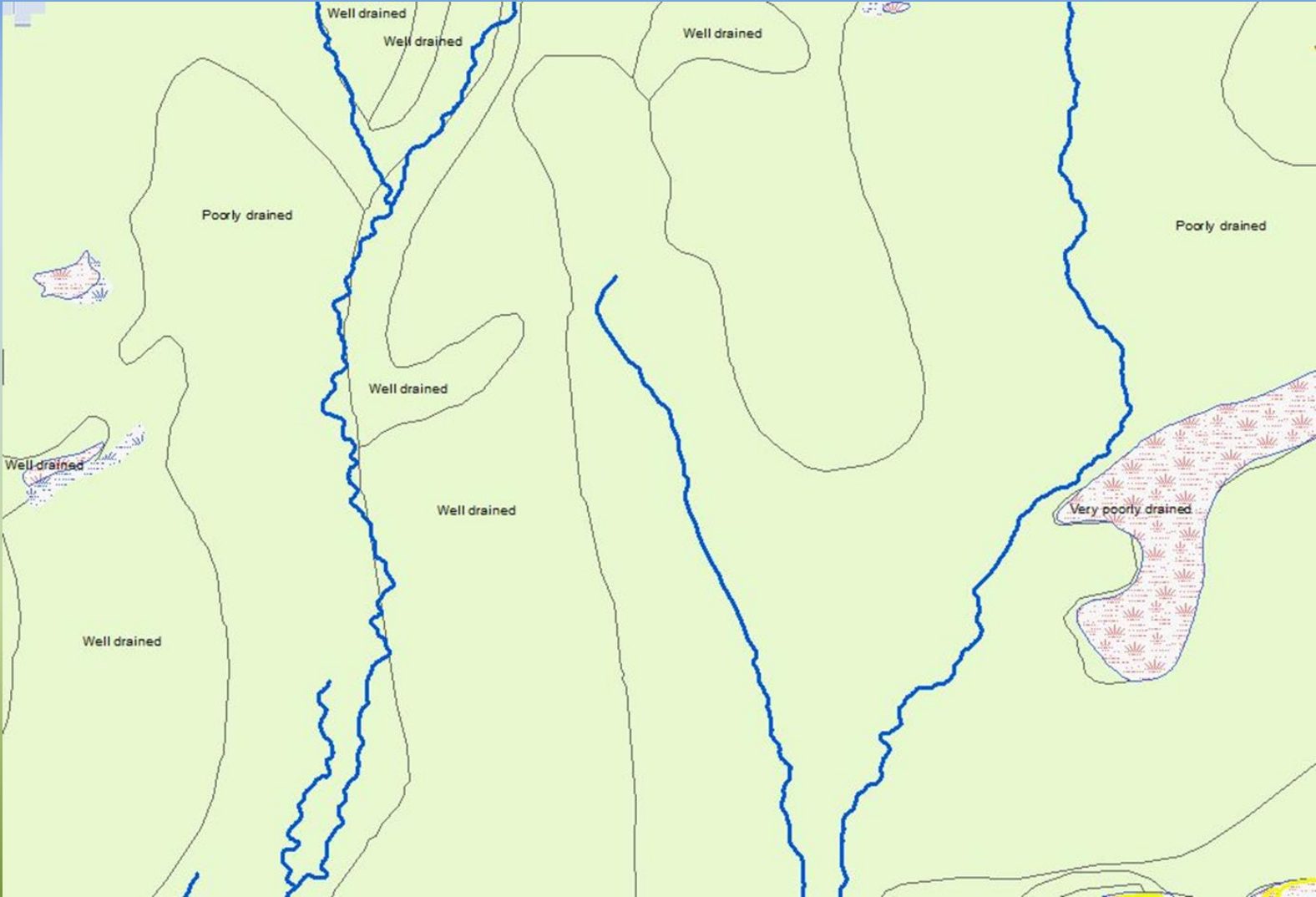
Collateral Data



Collateral Data



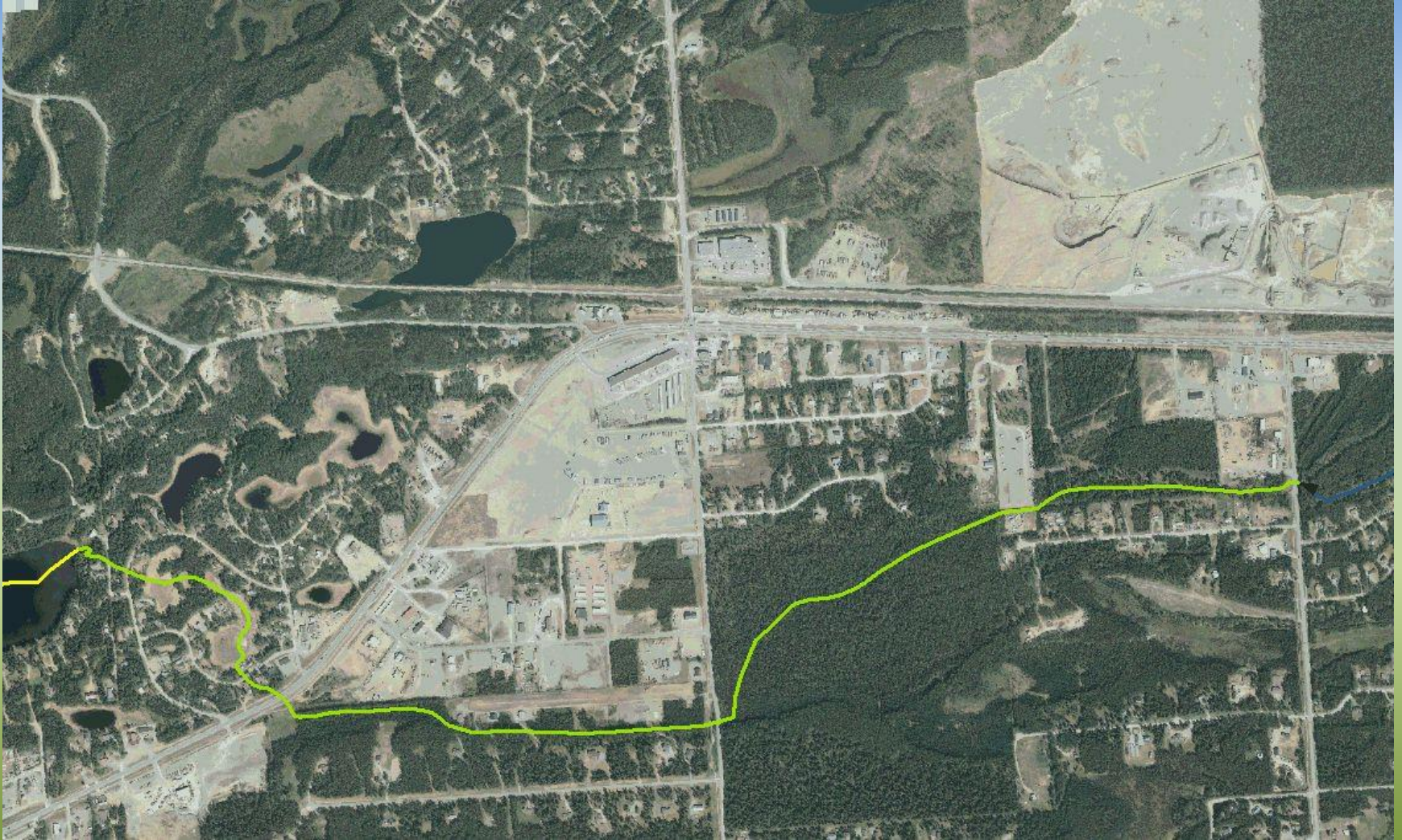
Collateral Data



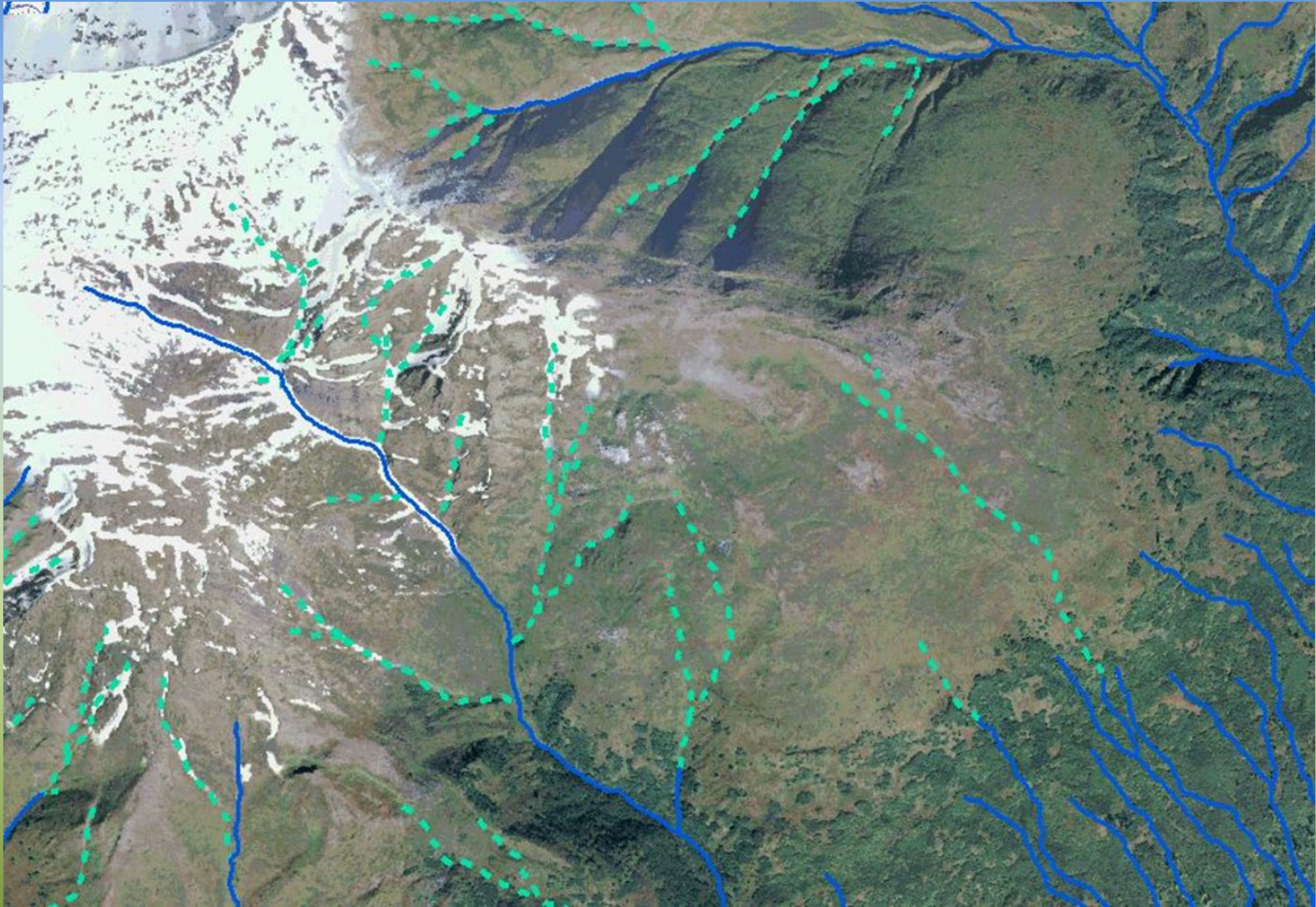
Challenges



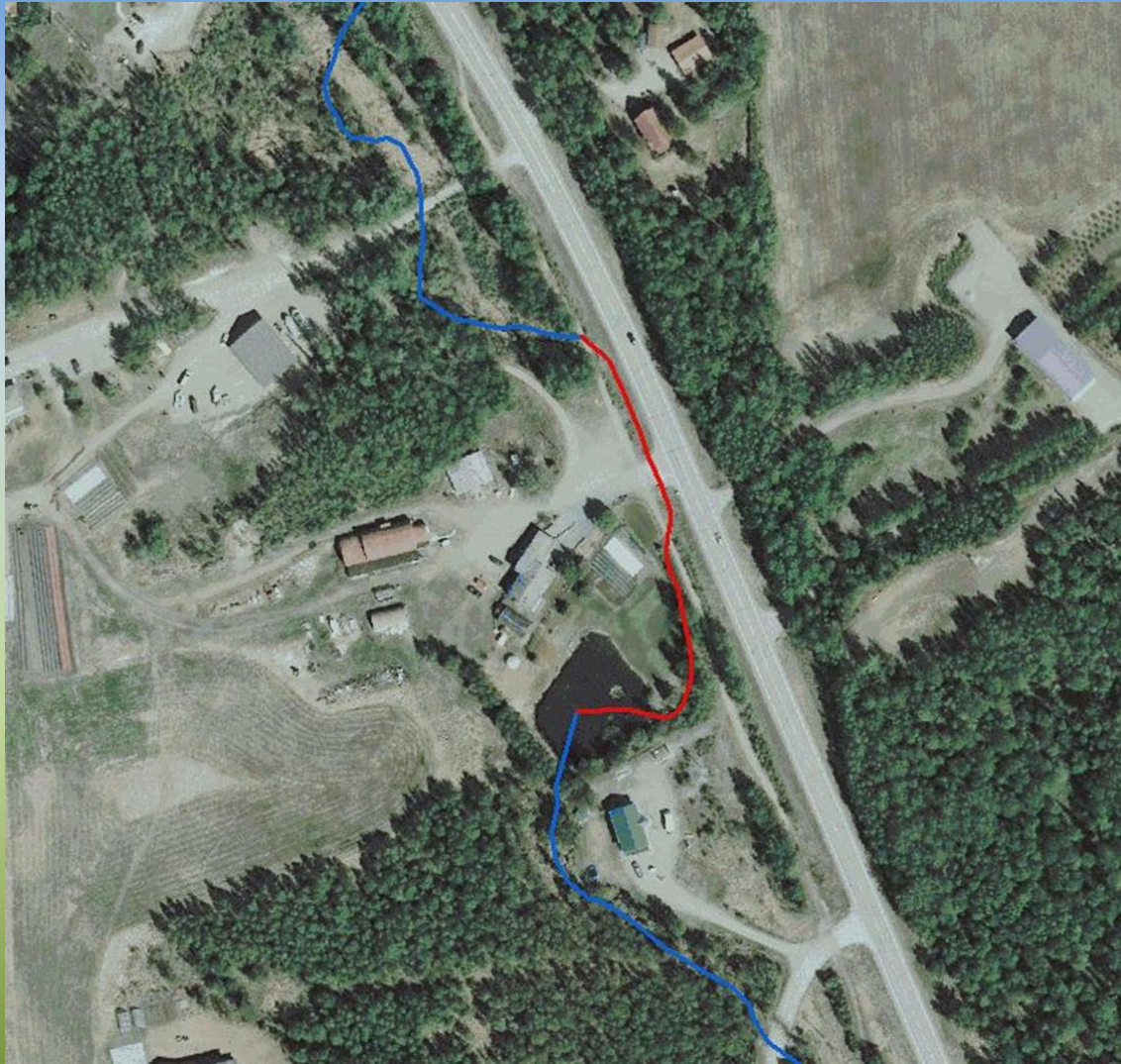
Challenges



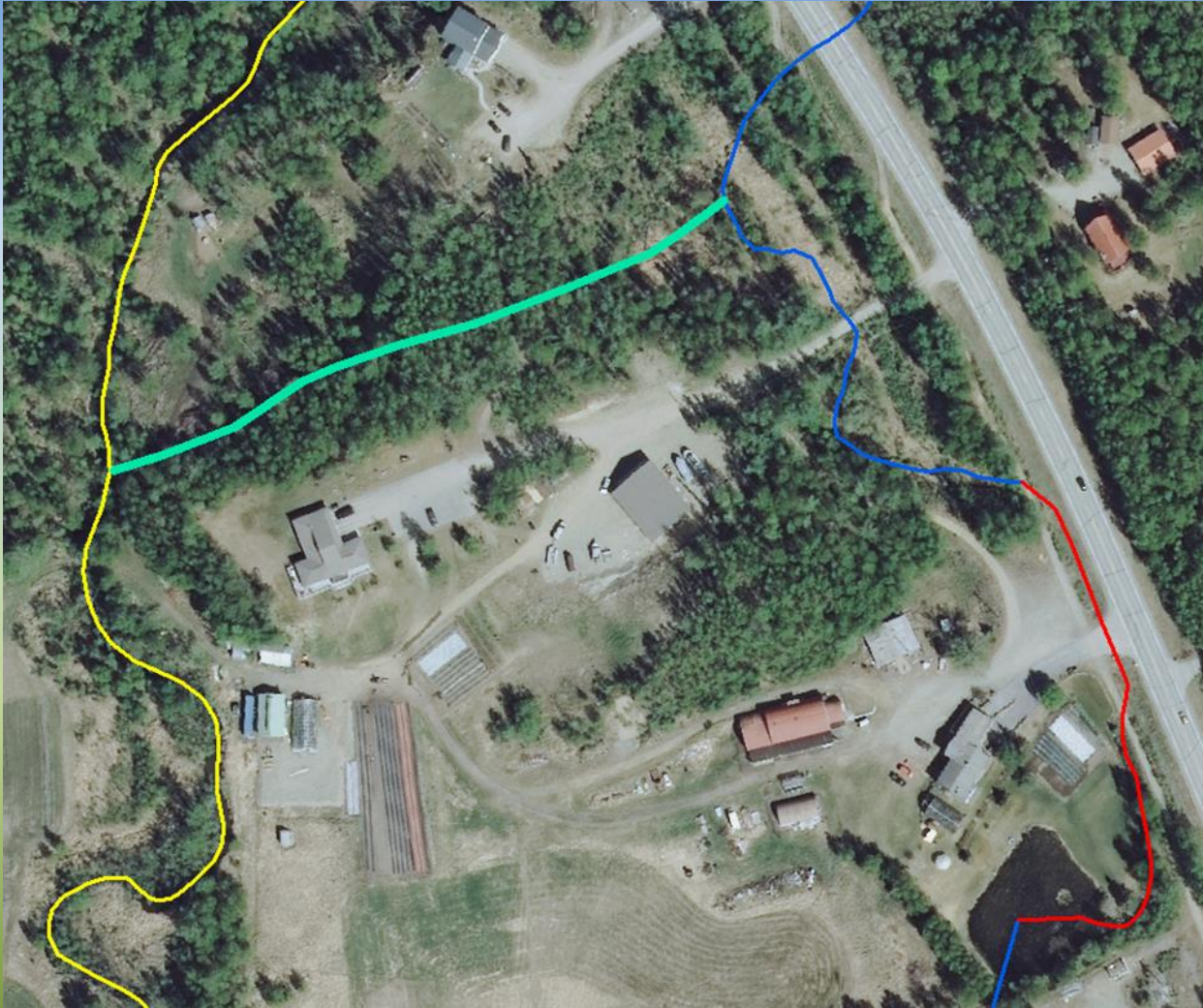
Challenges



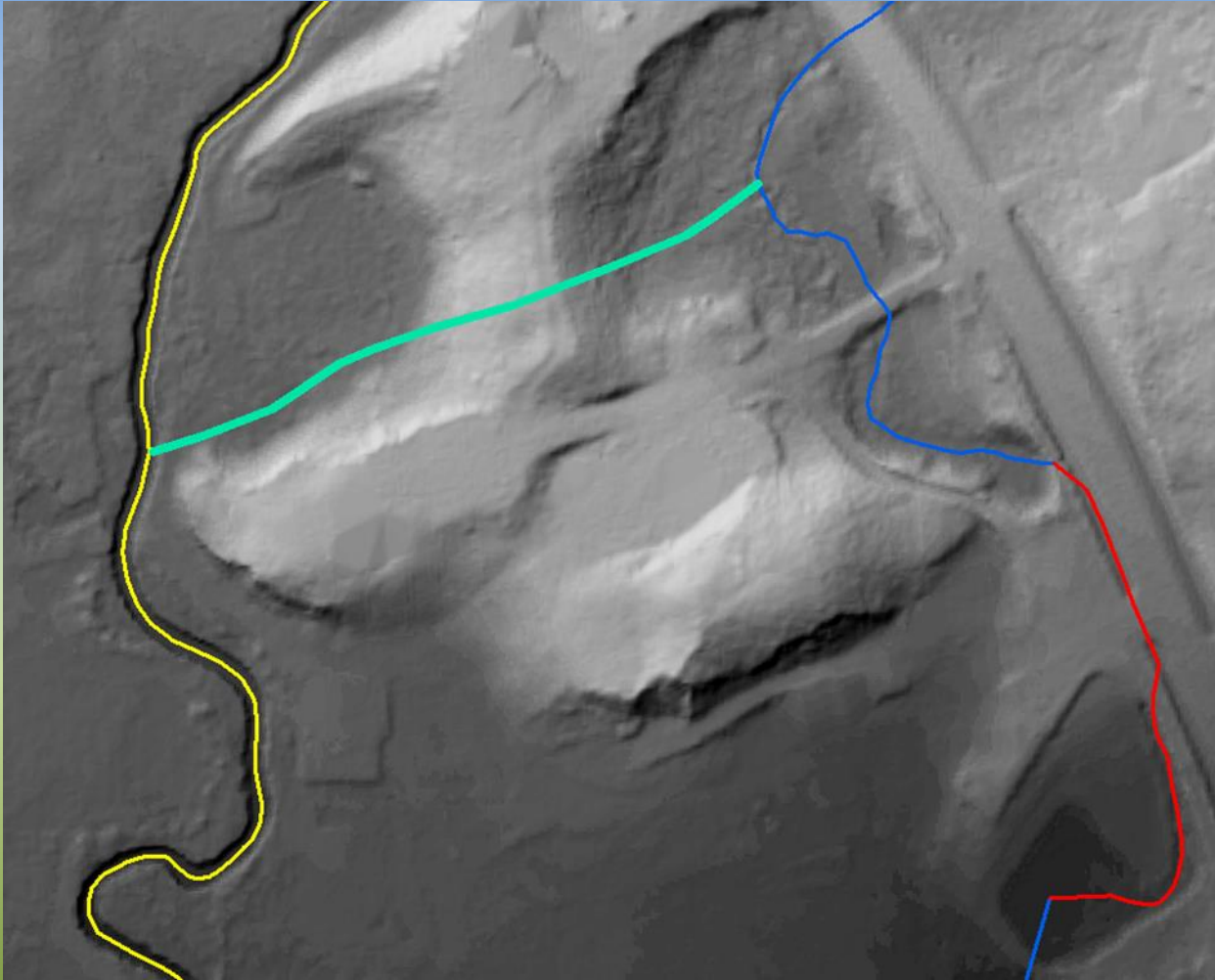
Challenges



Challenges



Challenges



Challenges

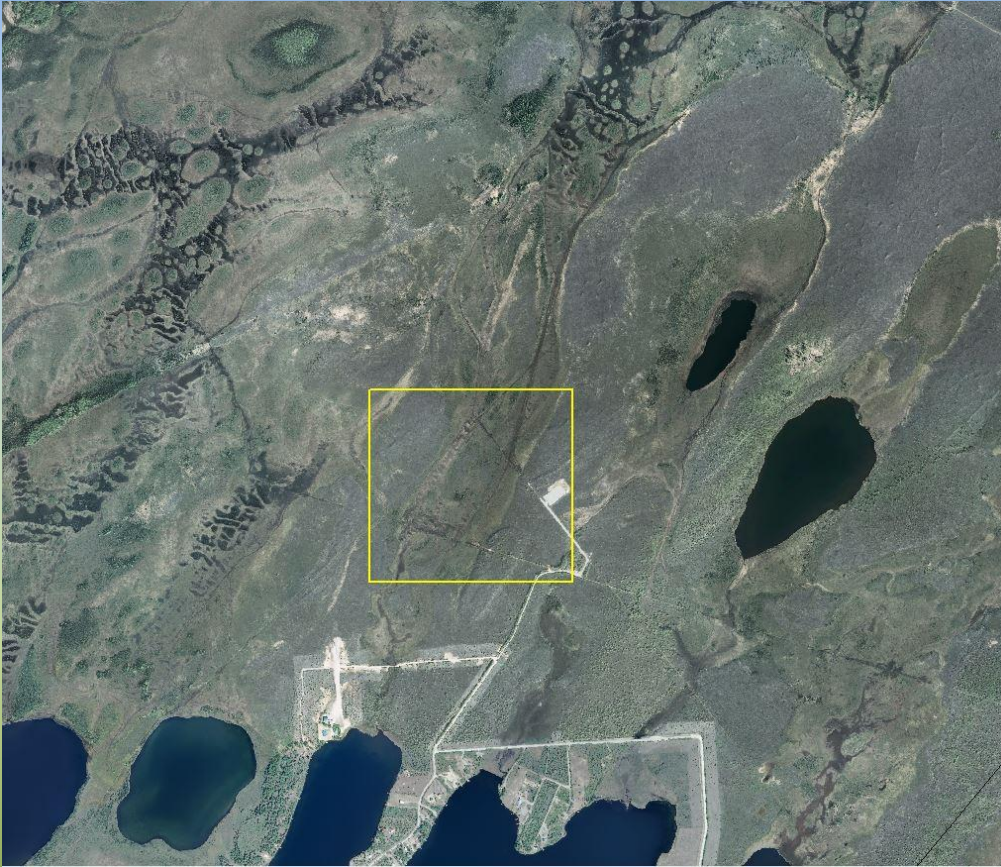


GeoSpatial Services

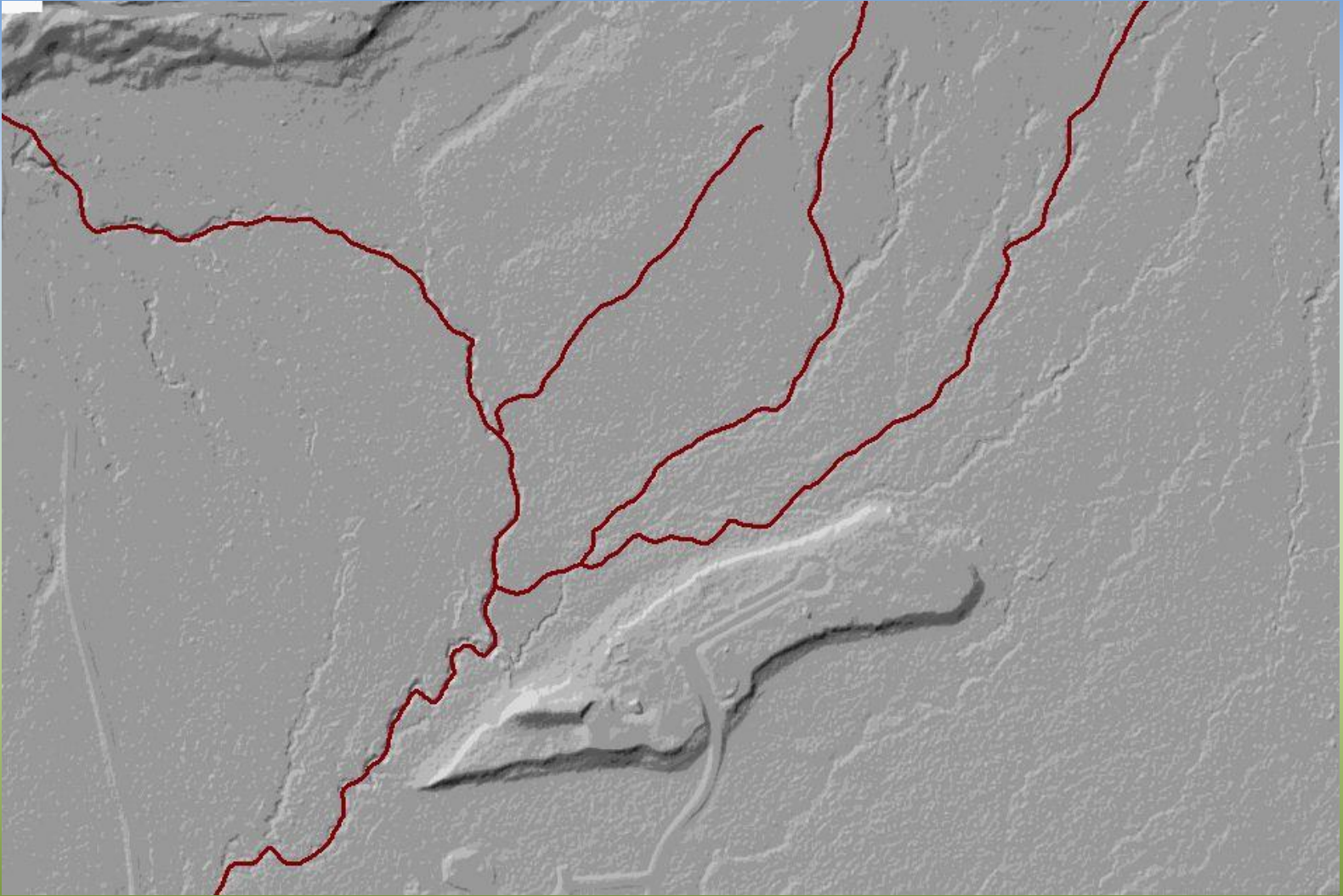


Wetland Connections

Challenges



Example



Example



Example



Example



Example



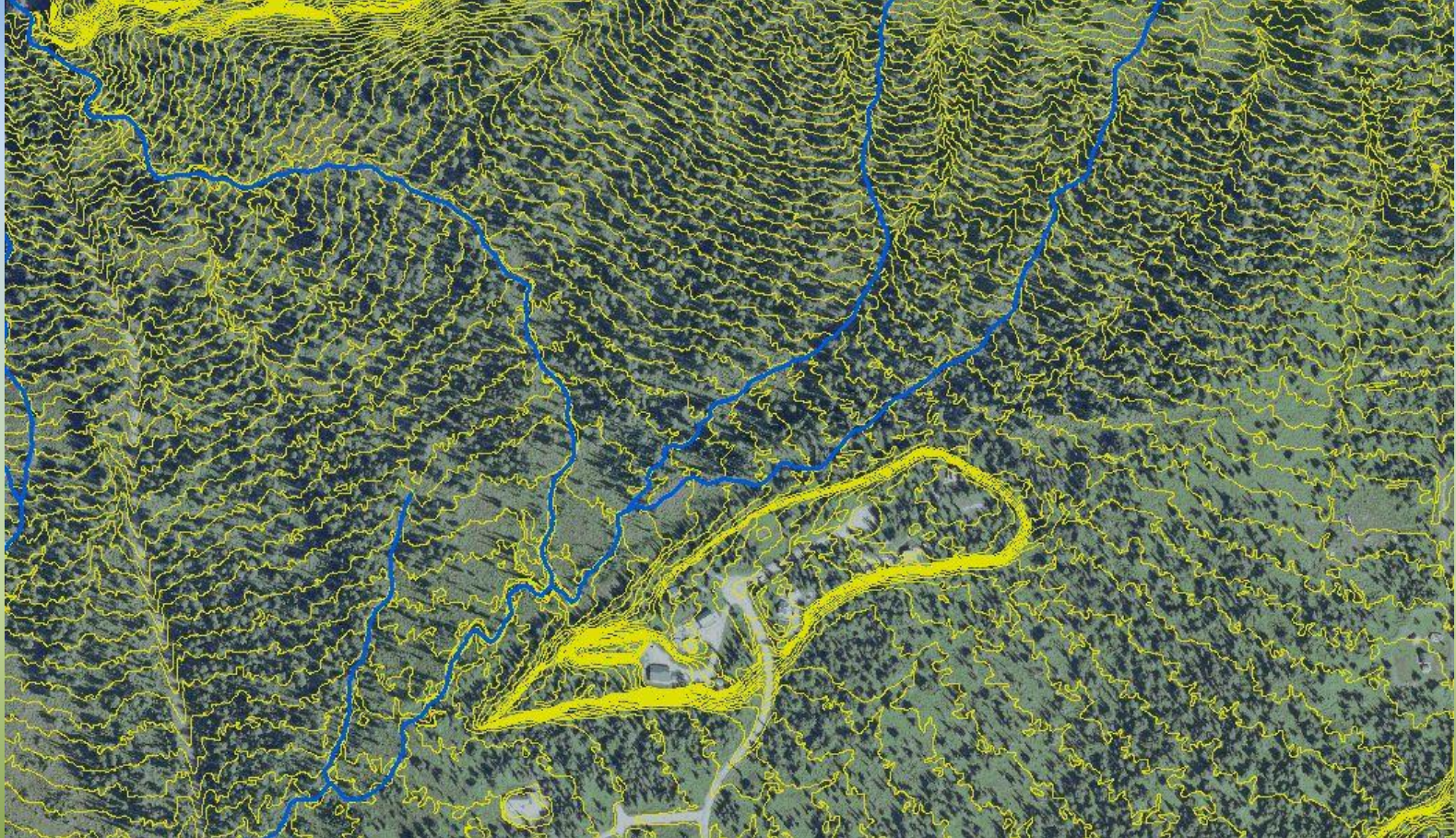
Example



Example



Example



Example



Example



Questions?

Andy Robertson
Associate Director
GeoSpatial Services
Saint Mary's University of Minnesota
aroberts@smumn.edu
507-457-8746