



ATV Salmon Stream Xing Assessment Project



The Intersection of people with salmon!

Wasilla Soil & Water Conservation District

Chuck Kaucic, District Manager

November 18, 2014

ATV Salmon Project details



- Made possible with support from Rep Lynn Gattis - KUDOS +

Newest project - ATV trail use

Two- fold objective

- 1) SALMON - Protect the resource
- 2) TRAIL USERS - Protect the rider's right to responsibly ride

Project Goals



1) Assess ATV Trail Salmon Stream Xings

- 3 prioritized areas
 - Knik River
 - Matanuska River - dike
 - Little Su River tribs/watershed - across the Schrock Rd bridge

2) Develop a Capital Project list

- Prioritized - worst to best

3) Outreach/Training

Partnership Interface



- OHV Goal: minimize degradation of salmon habitat @ trail Xings
 - Objective 11.1 Impacts to salmon & salmon habitat
 - Strategic Action 11.1.1 “ ... assess min. of 50% trail intersections by 2018”
 - Objective 11.2 Mitigate OHV Use at Streams
 - SA 11.2.2 “ ID most impacted...work toward mitigation @ 50% by 2018
 - SA 11.2.3 “...education program... where to ride...least impact on salmon”
 - SA 11.2.4 “ Work... to re-route/re-build trails to avoid salmon habitat”

Project Partners



- Agency

ADF&G

MSB

Cities

USFWS

DNR

Div of Forestry

- Community

Palmer Soil & Water Conservation District

Mat Su College

Mat Su Trails Council

Community Councils: Big Lake/MeadLakes/Butte

Alaska Trails

Willow Trail Committee

MSTPF

Homeowners Associations

Salmon Education



- Salmon present all year!.... *Really?*
 - *Baby salmon live here*
- Stream characteristics/profile (ADF&G Brochure)
 - Pool
 - Glide
 - Riffle

Support field items



- PERMITS, ADF&G brochures
- Maps, compass, GPS
- Clinometer, measuring tapes, spike & lath
- Pack, bunji's
- Apparel - all-weather; vest
- Rite in rain, clipboard, penS, data forms
- Camera
- Safety: Cell phone, 1st aid kit, bear spray
- TP; backpack shovel

Sites assessed - 2014



- Mat River - dike area
- Mat Valley Moose Range - head waters of Wasilla Ck
- Permanenti Trail - King River
- Knik River
- McRoberts Ck - Plumley Maud Trail
- Mud Lake Trail
- Swiftwater Creek - Little Su River trib
- Lucille Ck - Foothills Blvd
- Deception Creek - off 4 ½ mile Rd
- Little Su trib - west of Swiftwater
- Moose Creek
- Kings River trail

Data Form



- Trail location
- Stream/site
- Track type/width
- Track Surface/impact width (toe/top)
- Pebble count
- Deposition area
- Erosion/rut depth
- Mud/muck
- Scour pools
- Bank materials
- X section
- Site drawing/dimensions/details/comments

Moose Range #1



Moose Range #3



Moose Range #3



Findings - Nissan Creek



Moose Xing!!!



Swiftwater Creek #1



Matanuska Dike area



McRoberts Creek/Plumley Maud Trail



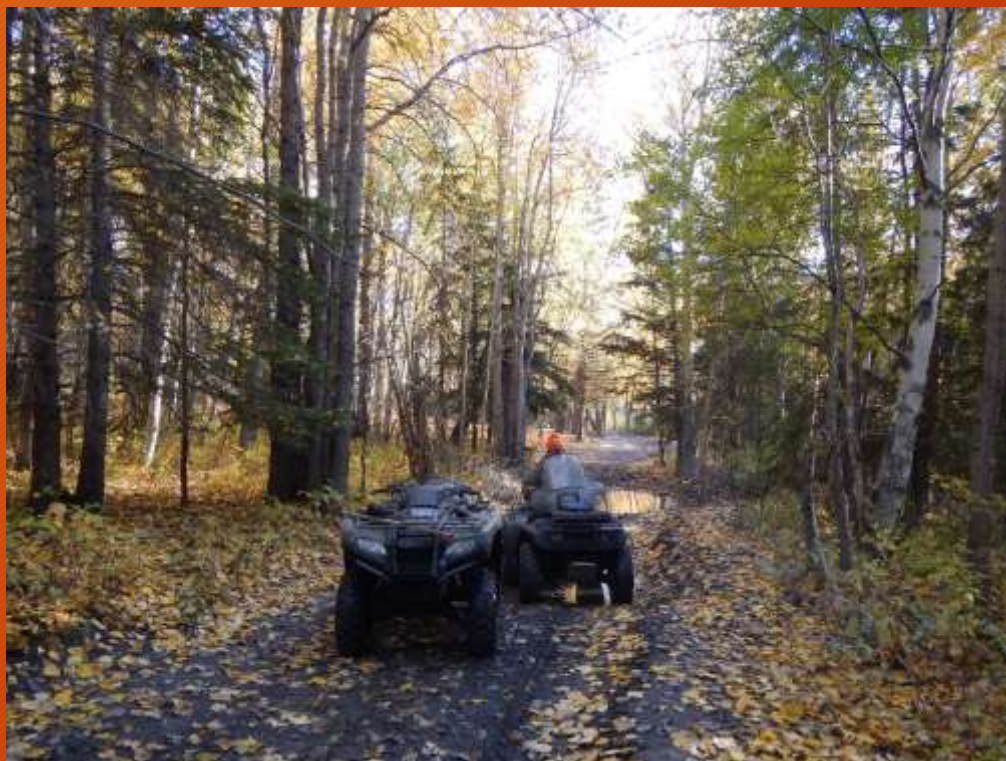
Kings River trib



Knik River Watershed



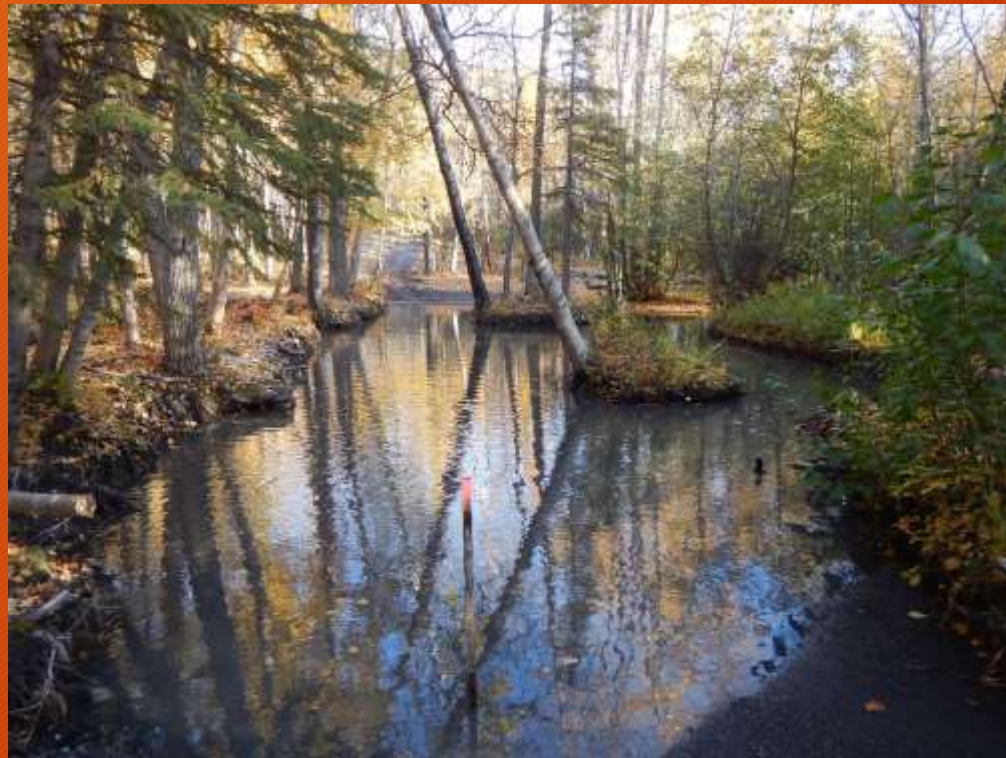
Knik River Uplands



Incised trails



Knik River upland holes



Lucille Creek Powerline



McRoberts Creek Demo Xing



Root wads/brush layering



Hardened low water Xing



Swiftwater #3



Bridge



Bridge limits



Summary



- NOTE: Most riders do not belong to a group/difficult to reach
- Riders support salmon
- We **MUST** develop a respect for riders
- Access & space
- Education/Involvement is key
- Crossing Projects need to be elevated in Agency priorities
- Motorized recreation is not going away/**GROWING!**

Home sweet home...that's all folks!

