

What Have We Accomplished?



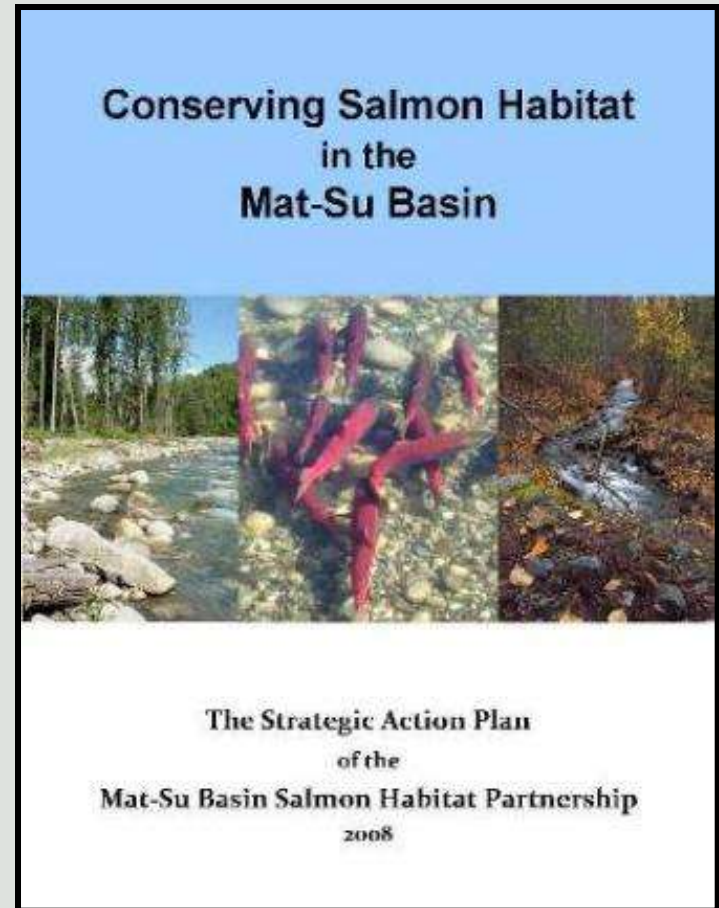
MatSu Basin Salmon Habitat Partnership



**Bill Rice, PE Hydrologist
U.S. Fish and Wildlife Service**

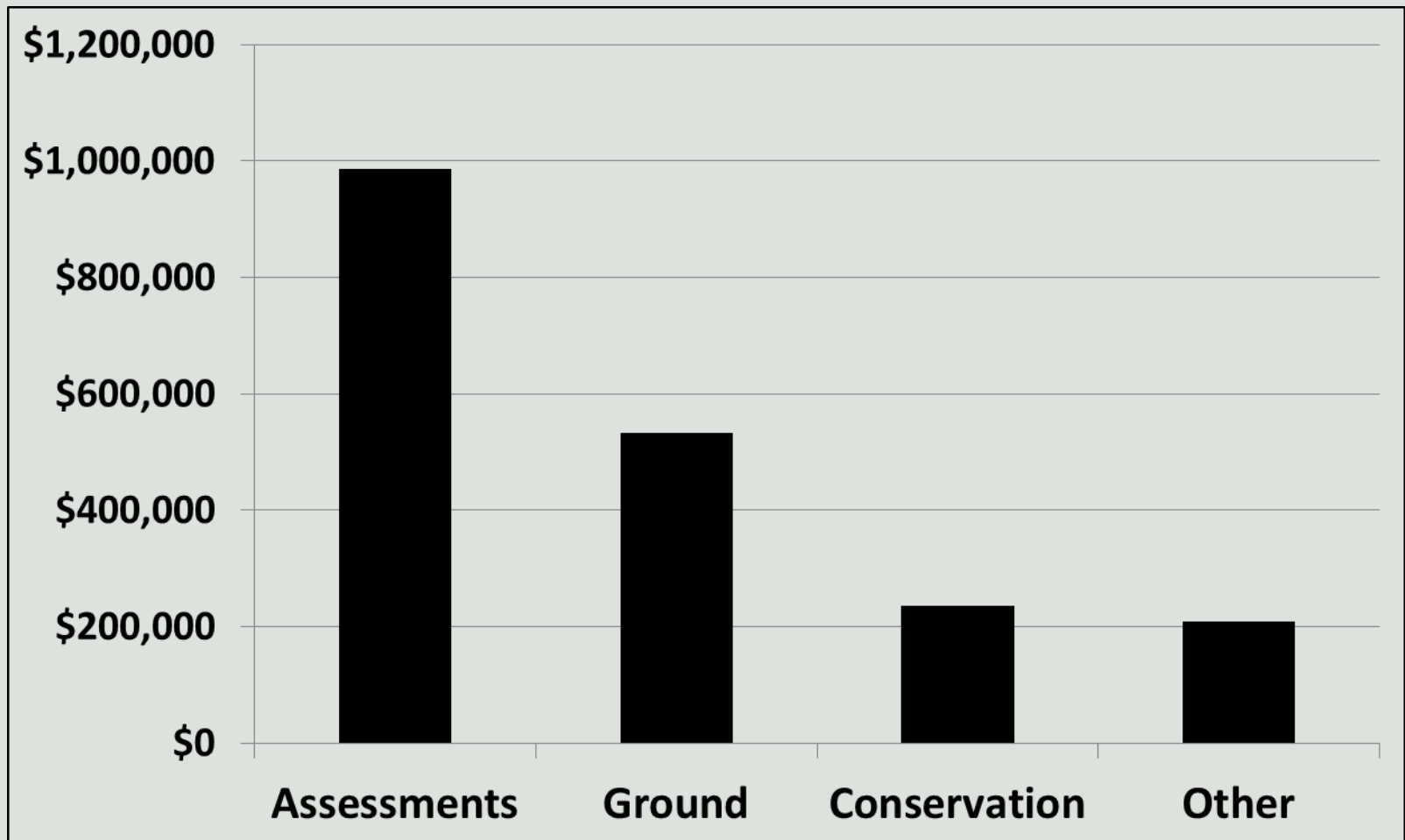
Action Plan Accomplishments

- **Funds**
- **Science**
- **Wetlands**
- **Invasive Pike**
- **Riparian**
- **Water Protection**
- **Fish Passage**
- **Estuaries**
- **Policy/Management**

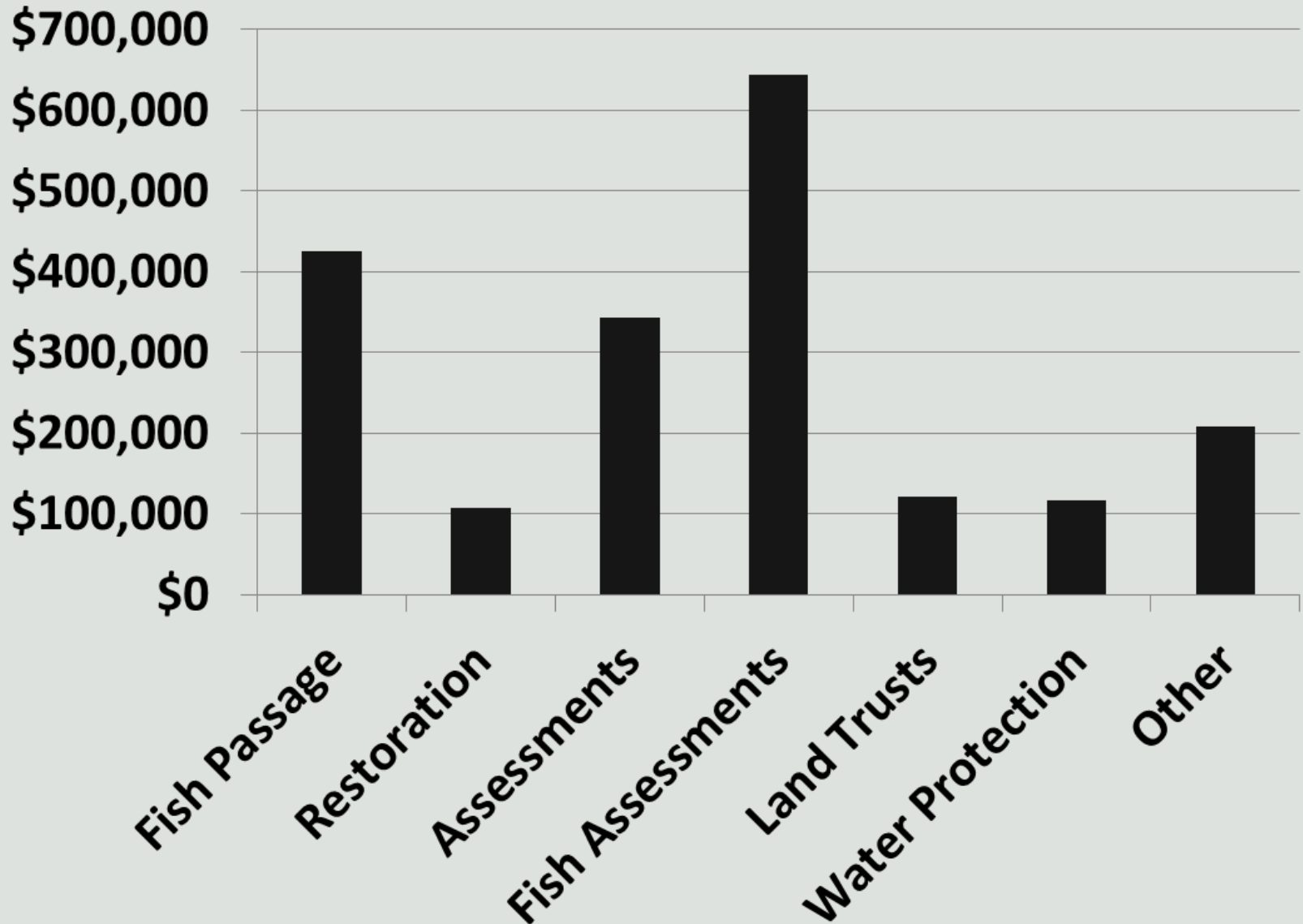


NFHP Funding Over Time

- **\$1.9 million NFHP Funds**
- **\$2.6 million match**
- **56 Projects**



NFHP Funding Over Time



Science



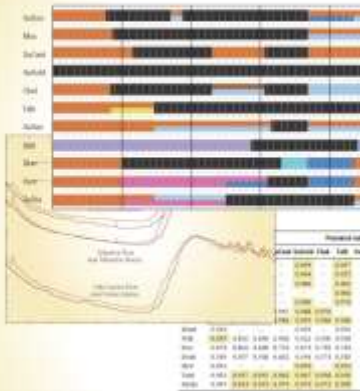
Prepared in cooperation with the U.S. Fish and Wildlife Service and Chickaloon Village Traditional Council

Distribution, Persistence, and Hydrologic Characteristics of Salmon Spawning Habitats in Clearwater Side Channels of the Matanuska River, Southcentral Alaska



Prepared in cooperation with the Alaska Energy Authority

Streamflow Record Extension for Selected Streams in the Susitna River Basin, Alaska



Scientific Investigations Report 2012-5210

U.S. Department of the Interior
U.S. Geological Survey



Prepared in cooperation with the Matanuska-Susitna Borough

Geomorphology and Bank Erosion of the Matanuska River, Southcentral Alaska



Prepared in cooperation with the Alaska Department of Natural Resources

Shallow Groundwater in the Matanuska-Susitna Valley, Alaska—Conceptualization and Simulation of Flow

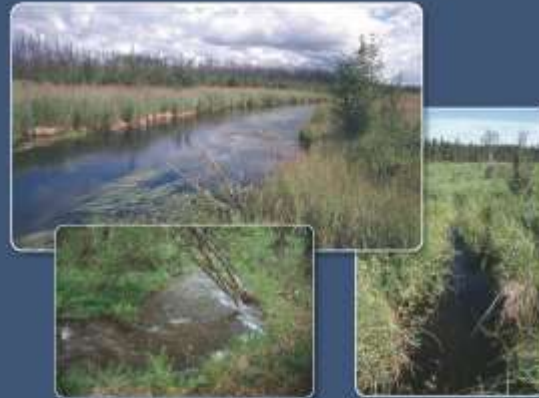


Scientific Investigations Report 2013-5049



Prepared in cooperation with U.S. Fish and Wildlife Service

Baseline Channel Geometry and Aquatic Habitat Data for Selected Streams in the Matanuska-Susitna Valley, Alaska



Scientific Investigations Report 2009-5084

U.S. Department of the Interior
U.S. Geological Survey

Science

U.S. Fish & Wildlife Service

Inventory of Fish Distribution in Matanuska-Susitna Basin Streams, Southcentral Alaska, 2009

Alaska Fisheries Data Series Number 2010-1



Anchorage Fish and Wildlife Field Office
Anchorage, Alaska
December 2010

U.S. Fish & Wildlife Service

Estimating the Spawning Distribution of Pacific Salmon in the Matanuska River Watershed, Southcentral Alaska, 2008

Alaska Fisheries Data Series Number 2009-12



Anchorage Fish and Wildlife Field Office
Anchorage, Alaska
July 2009

U.S. Fish and Wildlife Service

Juvenile Coho Salmon Migration and Habitat Use in Meadow Creek, Southcentral Alaska, 2011

Alaska Fisheries Data Series Number 2013-1



Anchorage Fish and Wildlife Field Office
Anchorage, Alaska
April 2013

Science

Comparison of Site Fidelity and Growth Rates of Juvenile Salmon between two Stream Types—A Pilot Study

A 2012 Pilot Study Evaluating Juvenile Salmon Use of Knik Arm Estuaries

Monitoring Juvenile Salmon and Resident Fish within the Matanuska

Matanuska-Susitna Stormwater Assessment

May through September 2011



**MAT-SU
STREAM TEMPERATURE MONITORING NETWORK
2012 DATA**

Report prepared for the
Mat-Su Salmon Partnership
(USFWS Agreement # F12AC00712)

By
COOK INLETKEEPER



ARRI
Aquatic Restoration & Research Institute

Erin M. Miller, Jeffrey C. Davis, and
Aquatic Restoration and Research
P.O. Box 923, Talkeetna, AK
arri@mtsonline.net

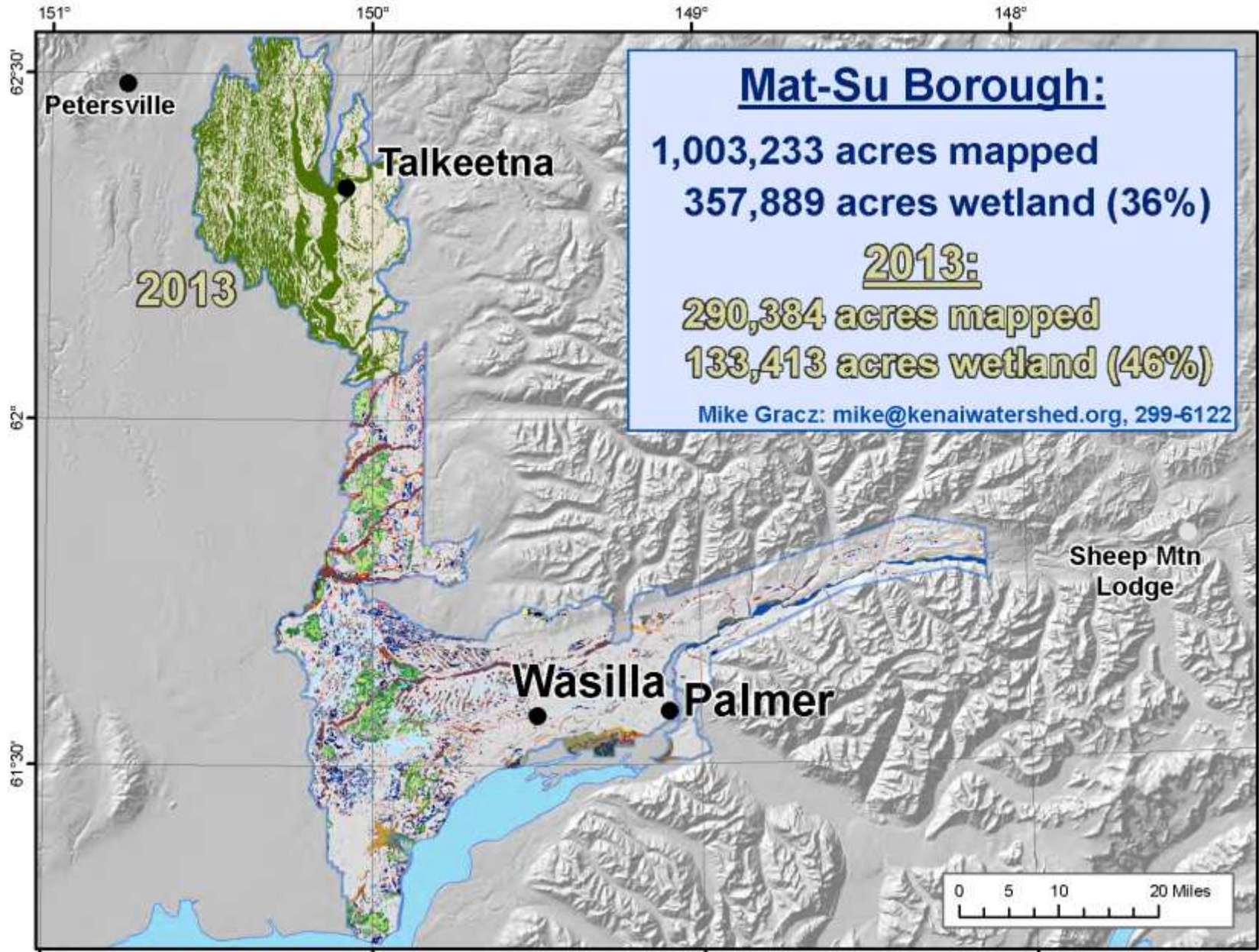
October 2011

ARRI
Aquatic Restoration & Research Institute

Erin M. Miller, Jeffrey C. Davis and Gay A. Davis
Aquatic Restoration and Research Institute
923, Talkeetna AK, 99676
arri@mtsonline.net 907.733.5432

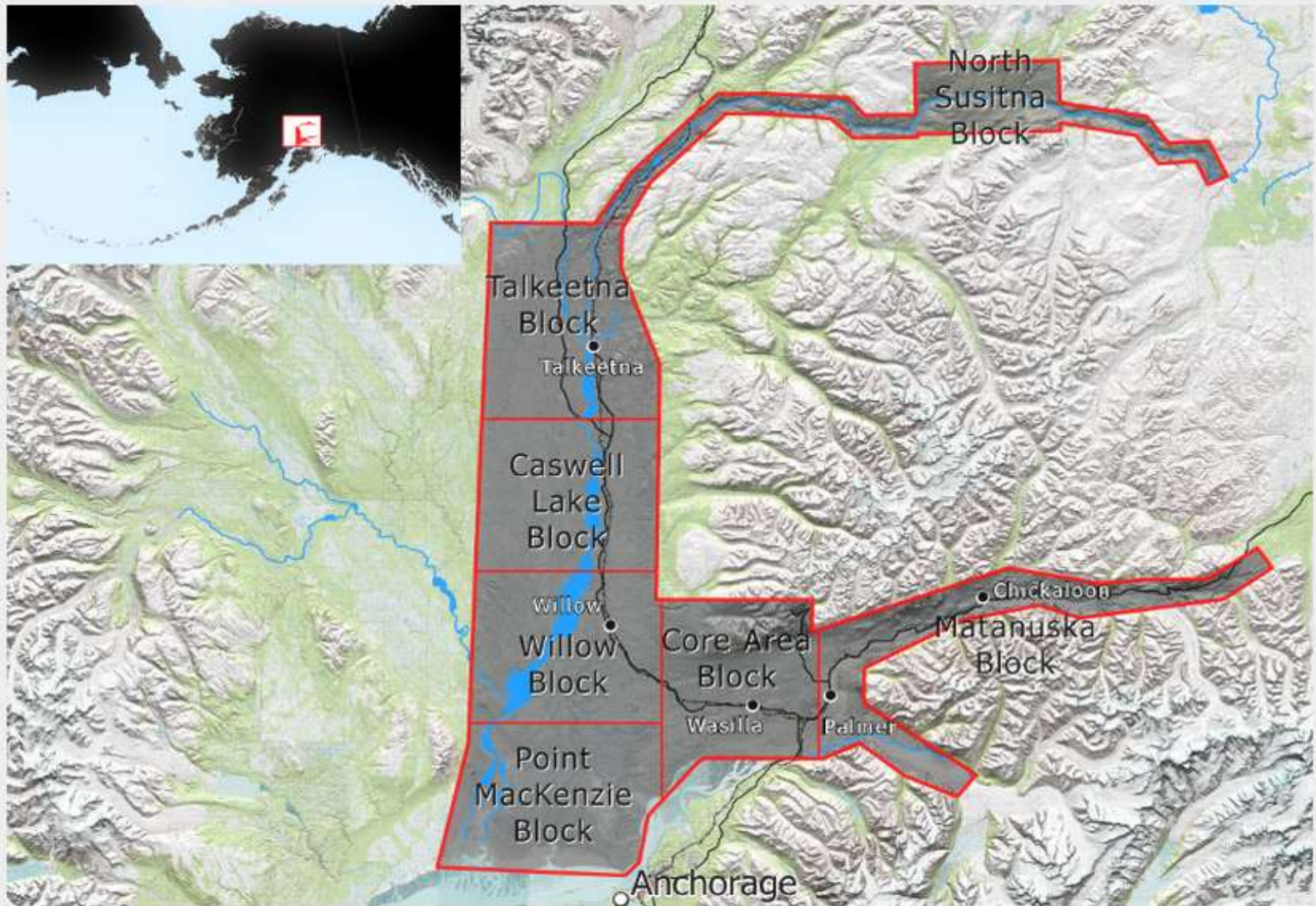
April 2012

Wetlands

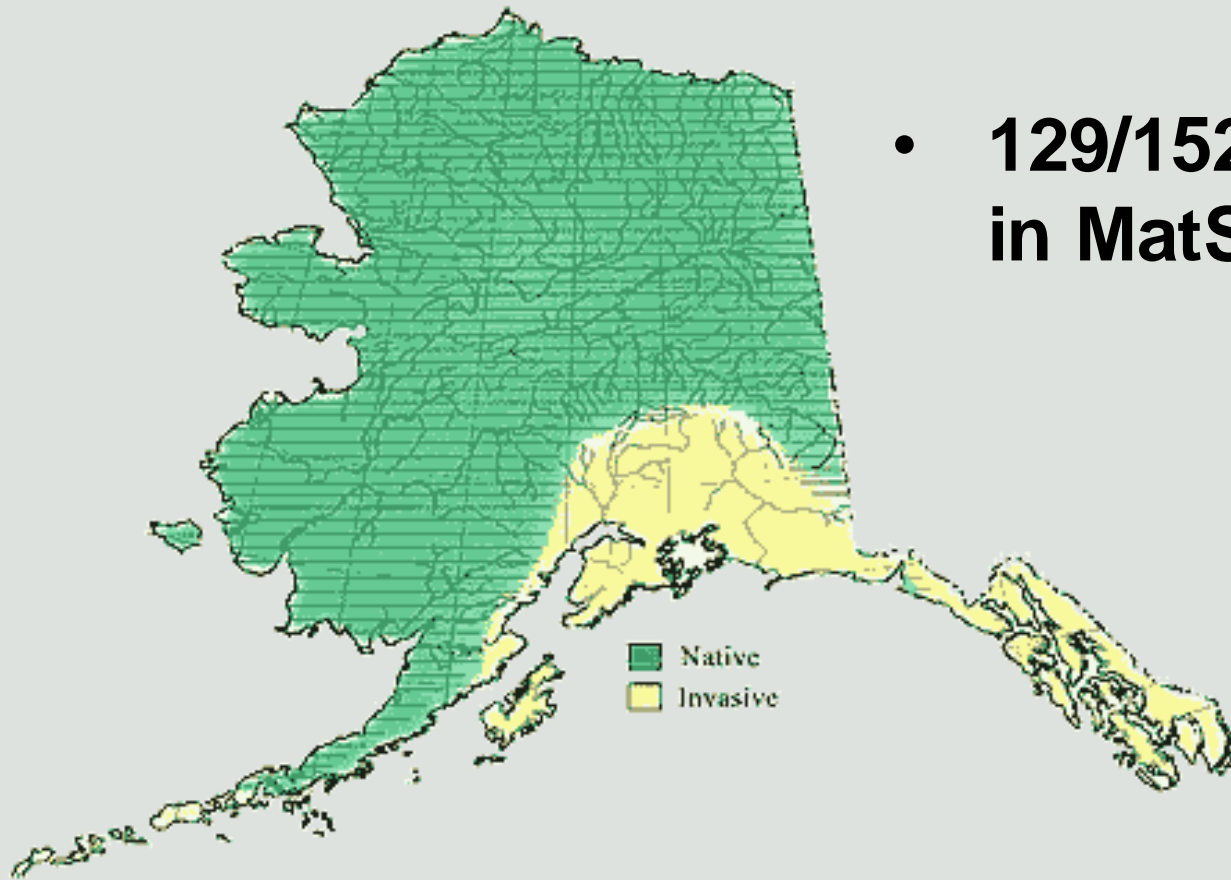


2011 MatSu LiDAR & Imagery

Public mirror of the [Matanuska-Susitna Borough's 2011 LiDAR & Imagery Project](#). Members of the public can get a full copy (or subset) on a disk from the [Mat-Su Borough LiDAR and Orthoimagery Data Ordering Portal](#).



Invasive Pike



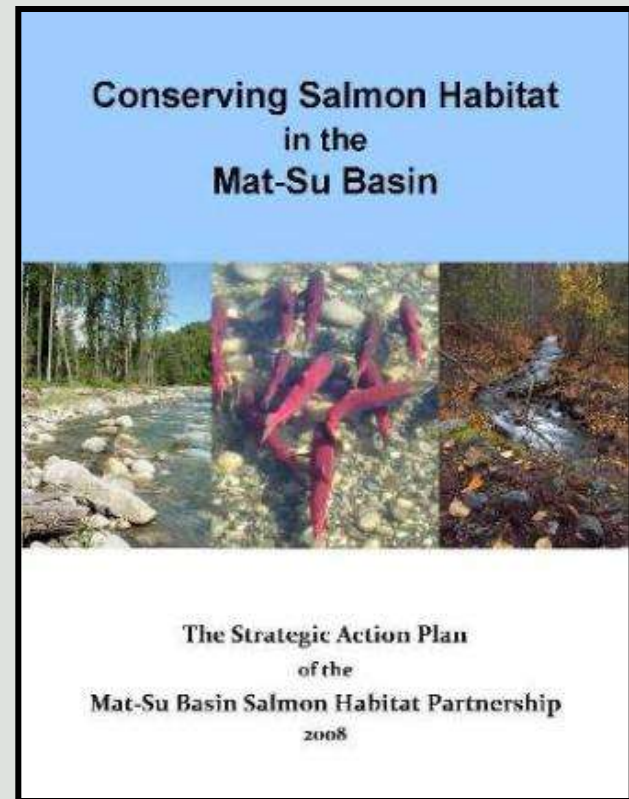
- **129/152 Locations are in MatSu***



From ADFG Website

Topics

- ✓ **Science**
- ✓ **Wetlands**
- ✓ **Invasive Pike**
- **Riparian**
- **Water Protection**
- **Fish Passage**
- **Estuaries**
- **Policy**



Riparian Assessment, Conservation and Restoration



Big Lake Sailing Club



Wasilla Lake



Sunshine Creek



McRoberts Creek



Little Meadow Creek



Deshka River

Water Reservation Program

New Reservation Applications

- **Moose Creek**
- **Wasilla Creek**
- **Montana Creek**

Strengthened

- **Meadow Creek**
- **Fish Creek**
- **Little Su**

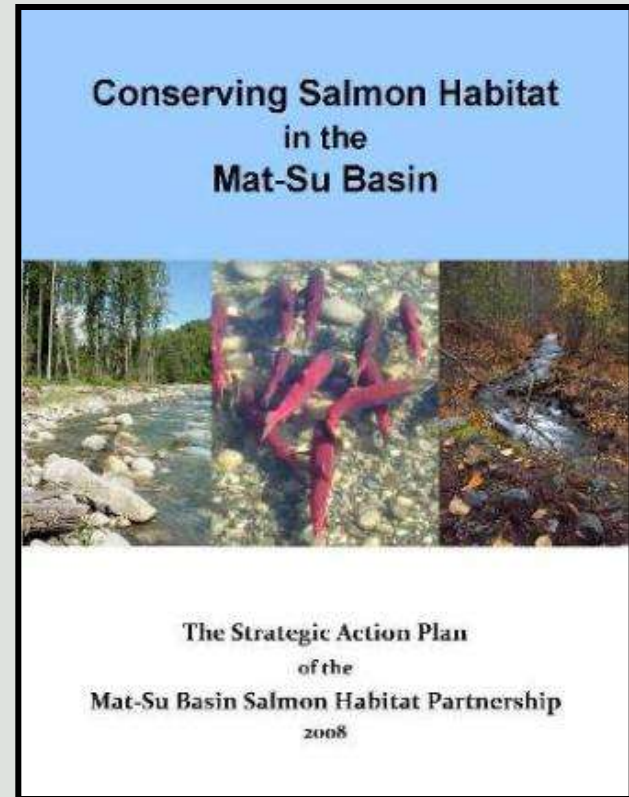
New Gages

- **Kashwitna River**
- **Little Willow Creek**
- **Kings River**



Topics

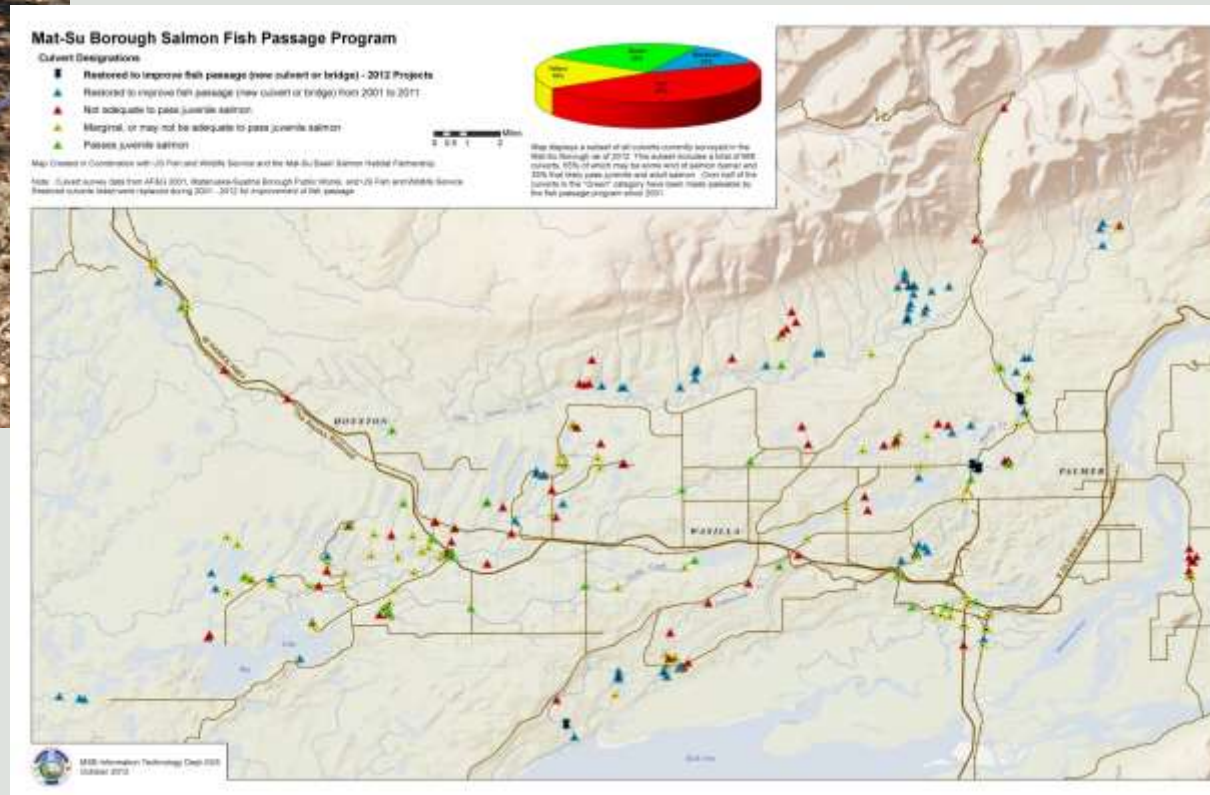
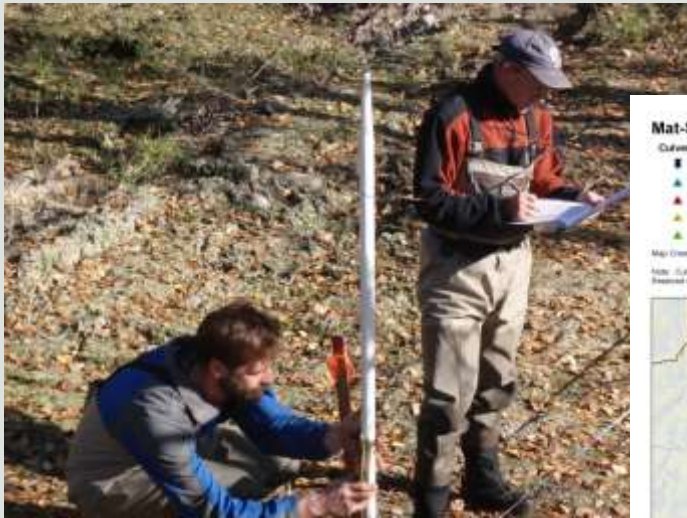
- ✓ **Science**
- ✓ **Wetlands**
- ✓ **Invasive Pike**
- ✓ **Riparian**
- ✓ **Water Protection**
- **Fish Passage**
- **Estuaries**
- **Policy**



Culvert Barriers

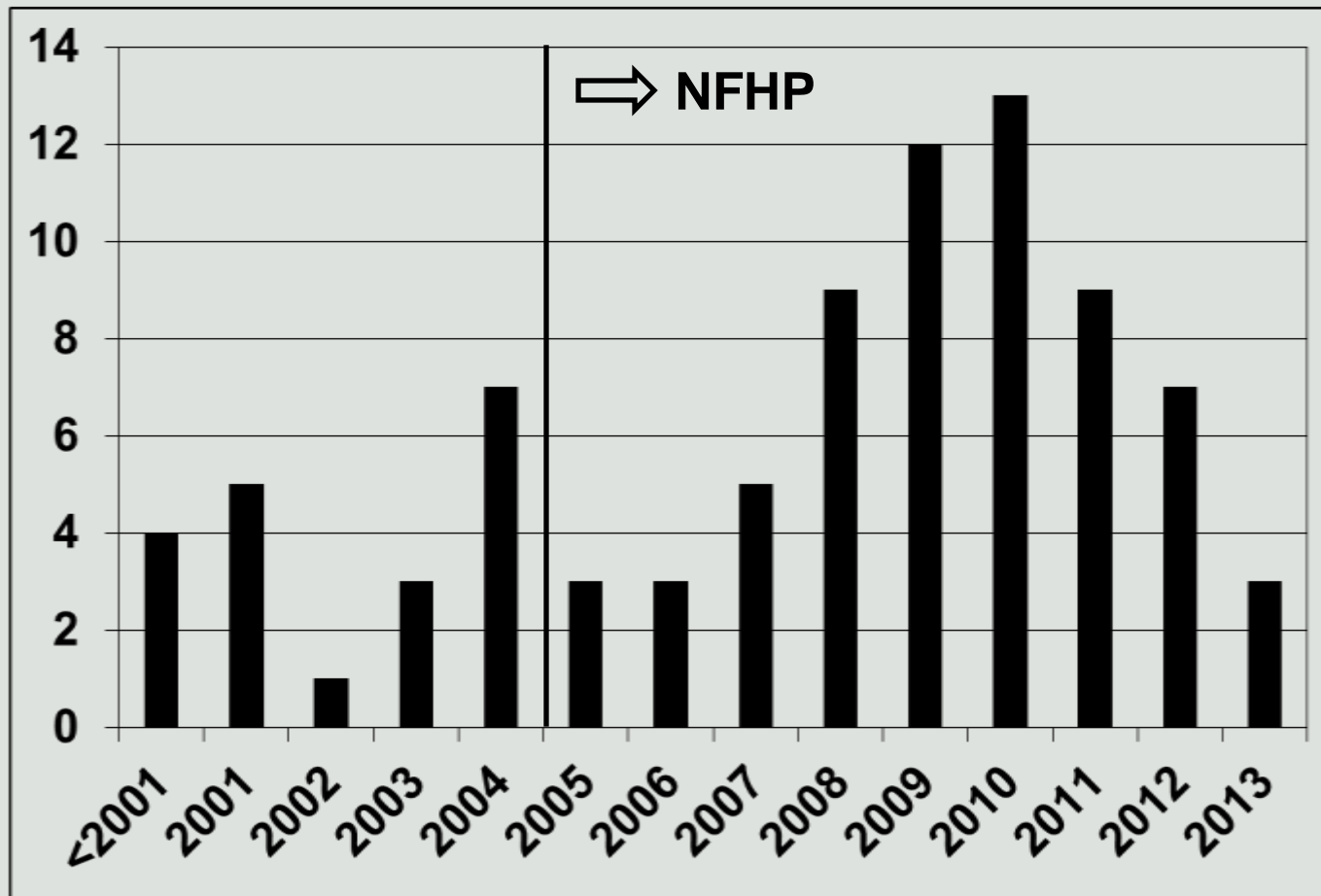
ADFG Inventory

- 587 culverts currently
- Over 650 miles upstream habitat
- Fish Passage Improvement Plan 2011



Total Culverts Replaced

- Since 1995 – 84 barriers Restored
- 62/84 Were Borough Roads
- 64 Culverts Since 2005



- State
- ARRA

Estuaries

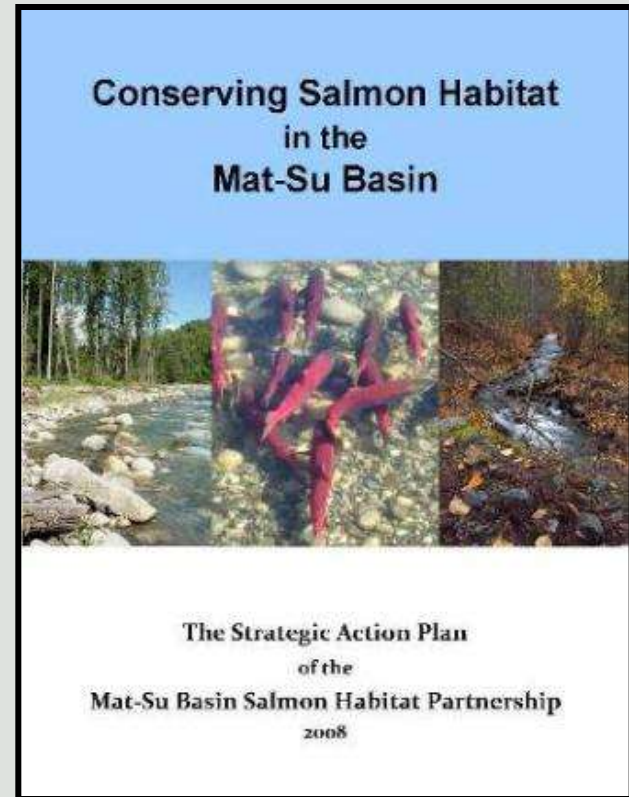


Policy and Management

- **2007 - Green Infrastructure**
- **2010 - Matanuska River Management Plan**
- **2011 - Wetland Management Plan**
- **2013 - FEMA Fish Passage Inclusion**
- **2013 - MatSu Fish Passage Ordinance**
- **2013 - Storm Water Management Plan**

Topics

- ✓ **Science**
- ✓ **Wetlands**
- ✓ **Invasive Pike**
- ✓ **Riparian**
- ✓ **Water Protection**
- ✓ **Fish Passage**
- ✓ **Estuaries**
- ✓ **Policy**



Broad Goals

“<The Partnership> is a model for how we can all work together for the benefit of salmon”

Where do we go Next?