

Great Land Trust: What We Do

We work willing landowners and other partners to permanently and directly conserve lands and waterways essential to the quality of life and economic health of communities throughout Southcentral. We achieve our conservation goals in several ways, including:

- Conservation Easements (9000 acres conserved, including 4300 acres of wetlands and 34 river miles)
- Land Donations
- Direct Land Purchase
- Cooperating with businesses, nonprofits, and local, state, and federal agencies on projects that benefit the community



GLT SERVICE AREA

WITH CONSERVATION PROPERTIES
AND FEE LANDS



Service Area Boundary



Conservation Easements



Fee Lands



KHLT Service Area



Protected Areas



GREAT LAND TRUST
SOUTHEAST ALASKA



Twenty One Conservation Easements~

- Andover Easement
- Campbell Creek Estuary
 - Eklutna Islands
 - Fish Creek Estuary
 - Fish Creek LaHonda
 - Goodman
 - Hartman
- Helen Louise McDowell Sanctuary
 - Holser
- Little Campbell Creek Greenbelt
- Pioneer Broadcasting
 - Edgerton
 - Vine Creek
- Saunders Crane Sanctuary
 - Skilling
- Su-Knik Mitigation Bank
 - Tanglewood Park
 - Waldron
 - Moon
 - Numbered Lakes
- Eklutna & Fire Creek Estuary





Conservation Priorities

**LANDS THAT PROVIDE CRITICAL
HABITAT FOR FISH AND WILDLIFE**



**LANDS THAT CONTAIN
IMPORTANT WETLANDS**



Conservation Priorities

**LANDS THAT PROVIDE
WILDLIFE AND RECREATIONAL
CONNECTIVITY**



**AND LANDS THAT OFFER SCENIC OPEN SPACE
AND NATURAL AREAS NEAR CITIES AND TOWNS**

Great Land Trust: Programs

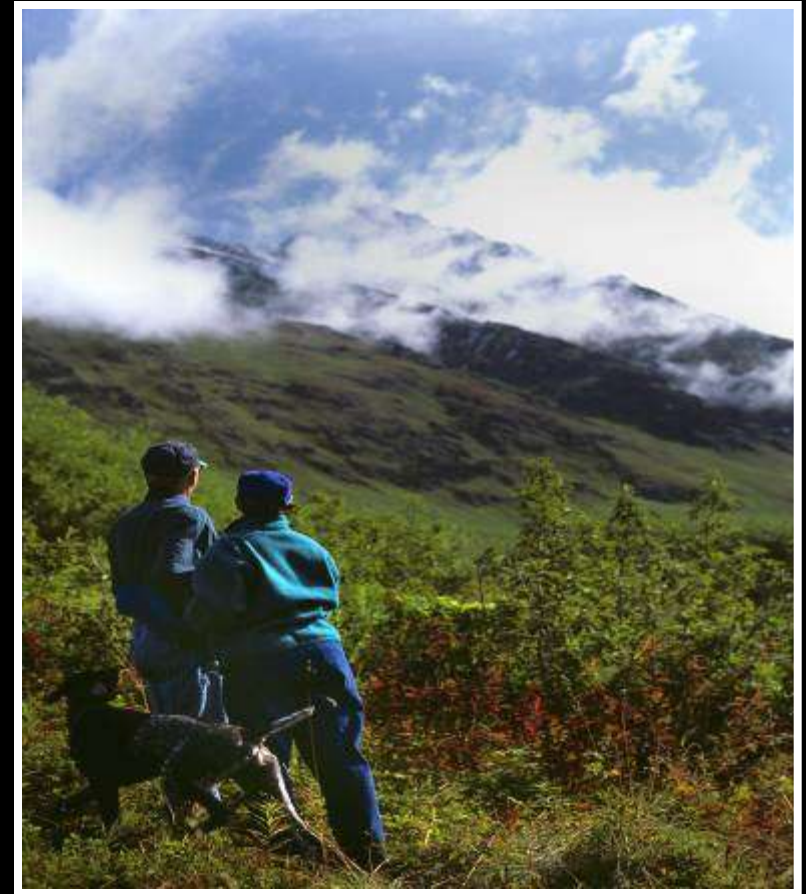
Land Conservation

Pathways to the Chugach

Wetland Mitigation

In-Lieu Fee

**Strategic Conservation
Planning**

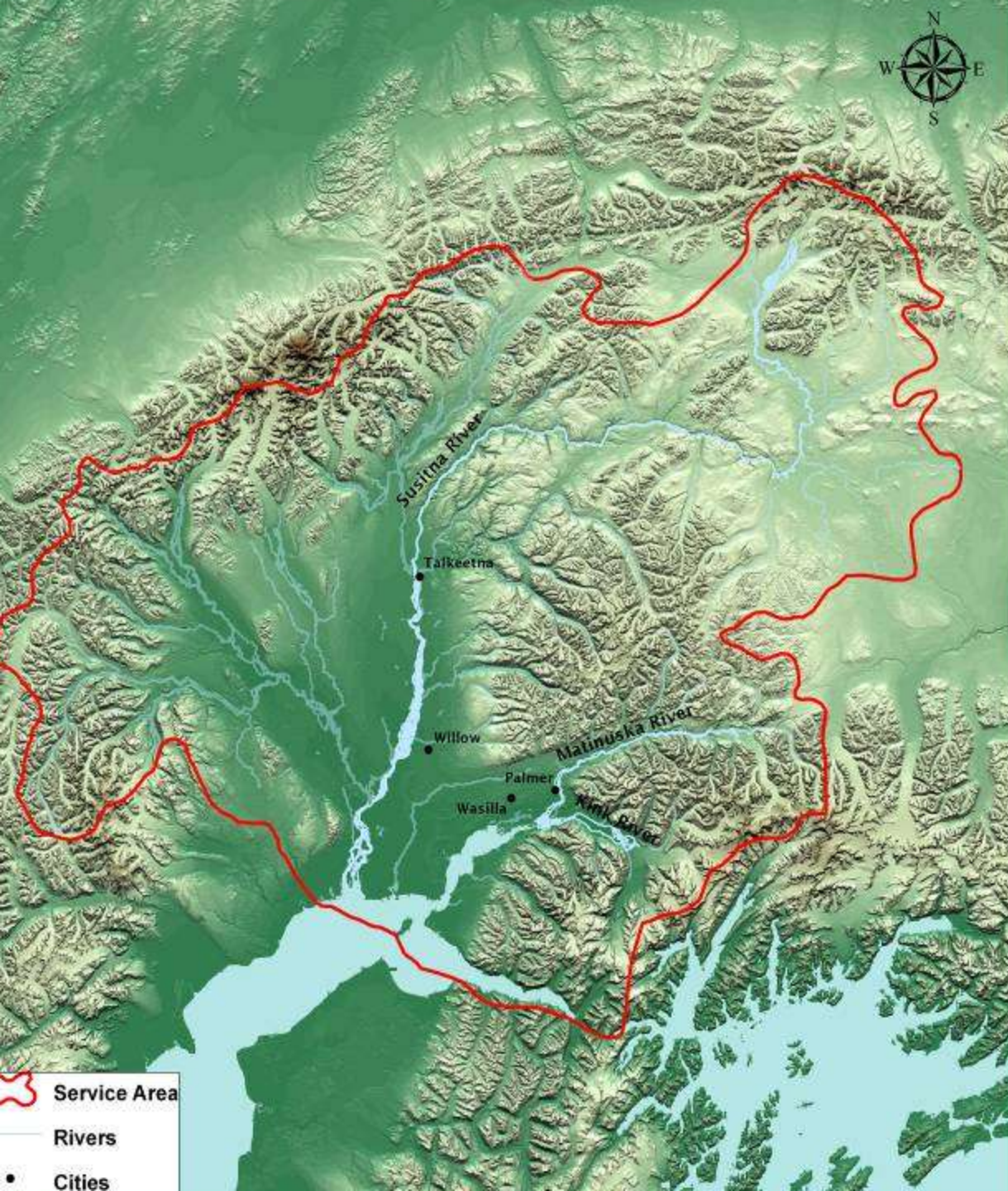


Working with willing landowners and other partners to conserve
Southcentral Alaska's lands and waterways.

Strategic Conservation Planning

- **Southern Mat-Su Upper Knik Arm 2009**
- **MSB Prioritization 2010**
- **Eklutna Inc. 2010**
- **Priority Salmon Habitat 2012**
- **MSB Community Asset Mapping 2012**



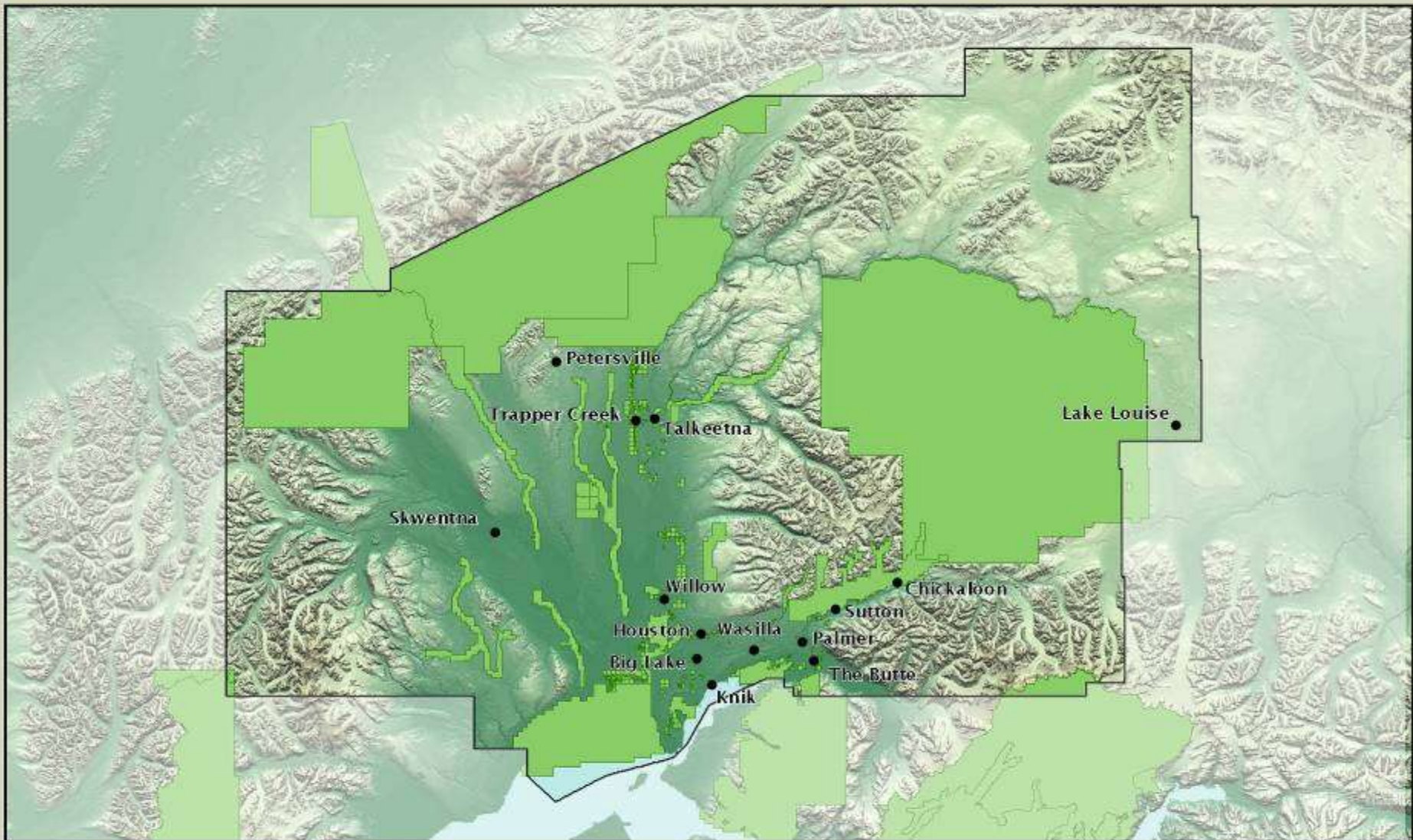


Conservation Criteria

- Threatened and Impaired Waters
- Protected Areas
- P/A of Wetlands
- Area of Wetlands
- P/A of Anadromous Streams
- P/A of All Streams
- Area of Riparian Buffer Zone
- Densely Developed Area
- Anadromous Fish Diversity
- Important Bird Areas
- Moose Habitat
- Community Infrastructure

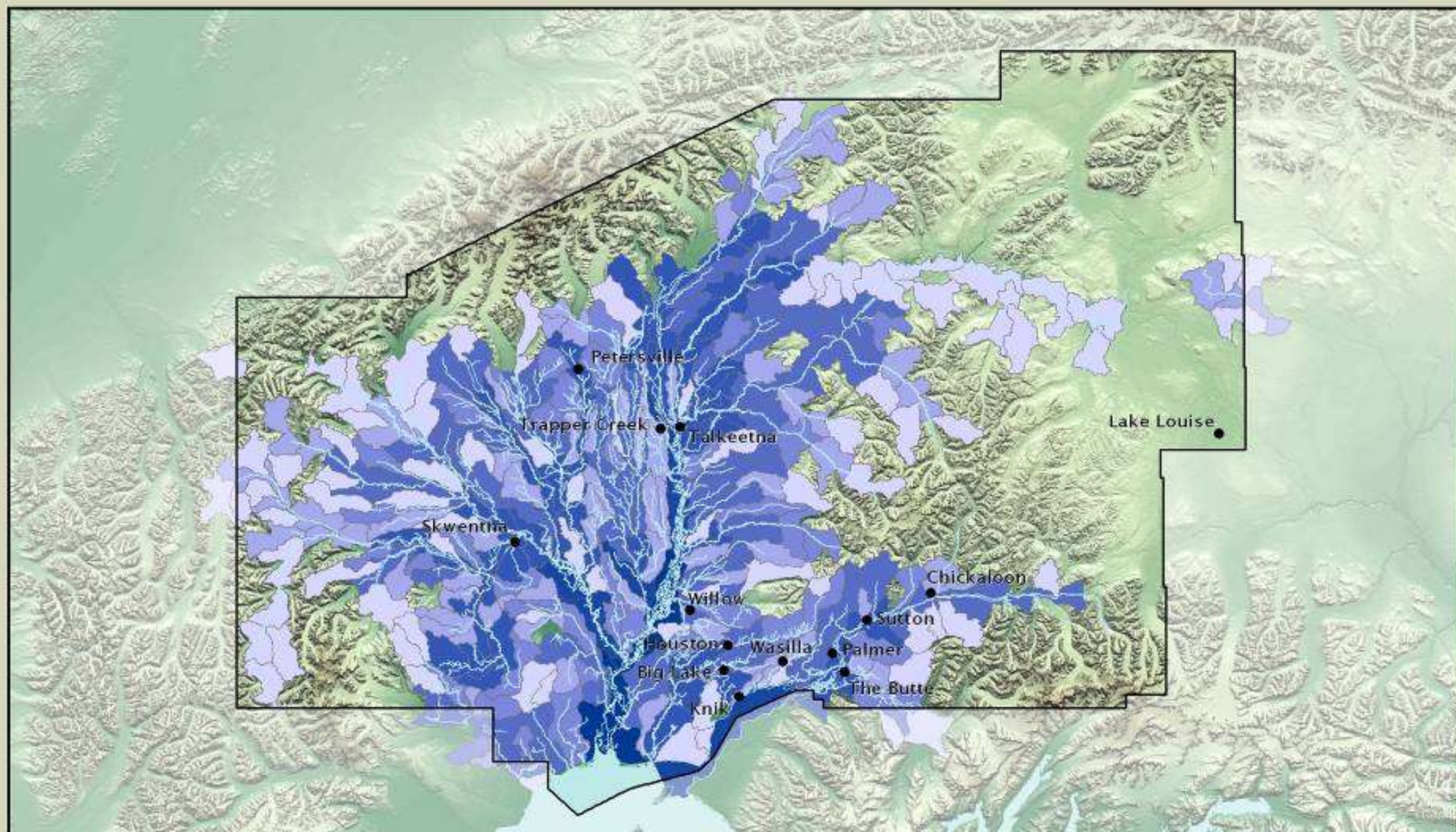
Protected Areas

MAT-SU PRIORITIZATION 2010
Protected Areas



Salmon Diversity by Watershed

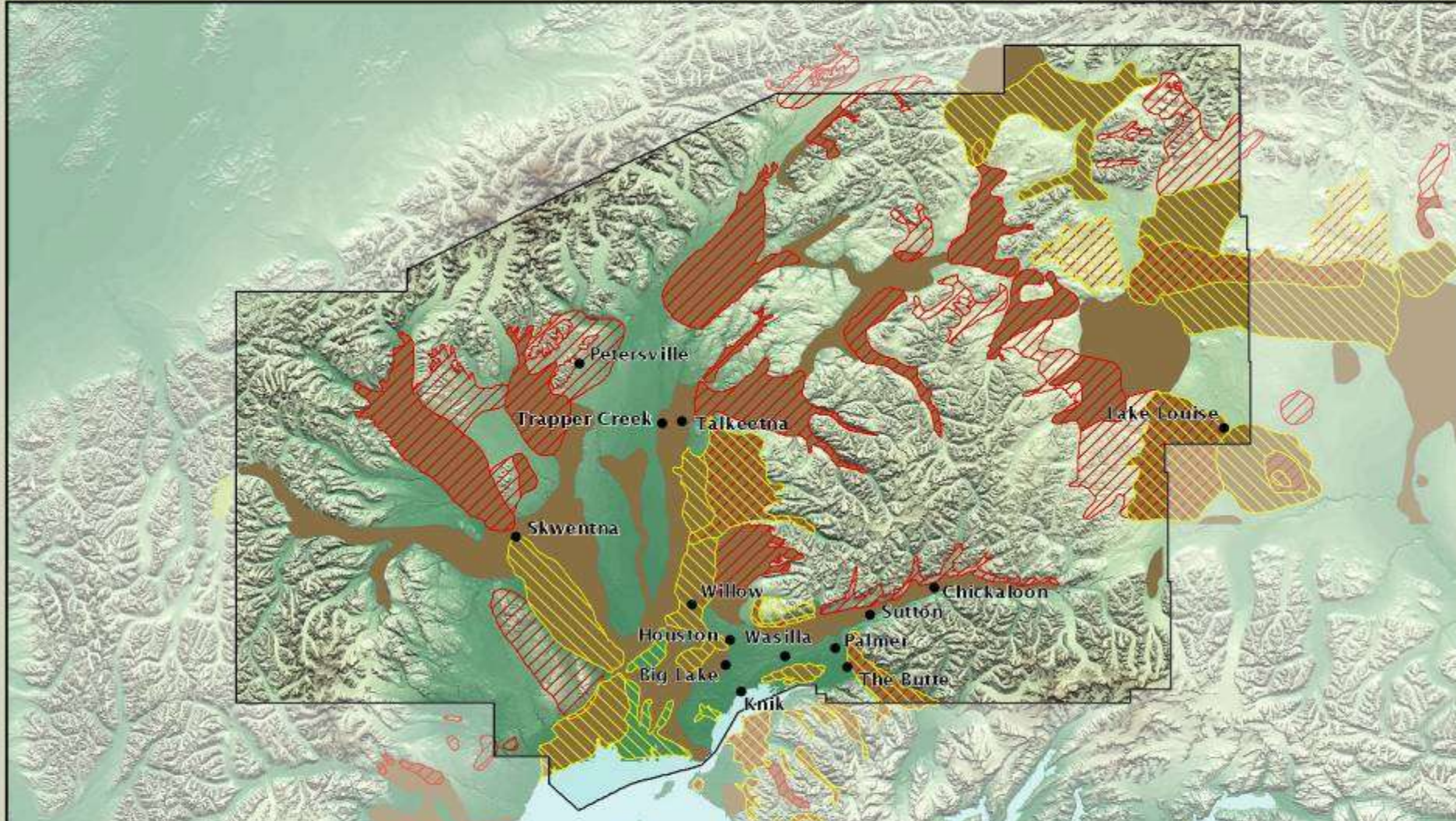
MAT-SU PRIORITIZATION 2010
Fish Habitat



Important Moose Calving, Wintering and/or Rutting Habitat

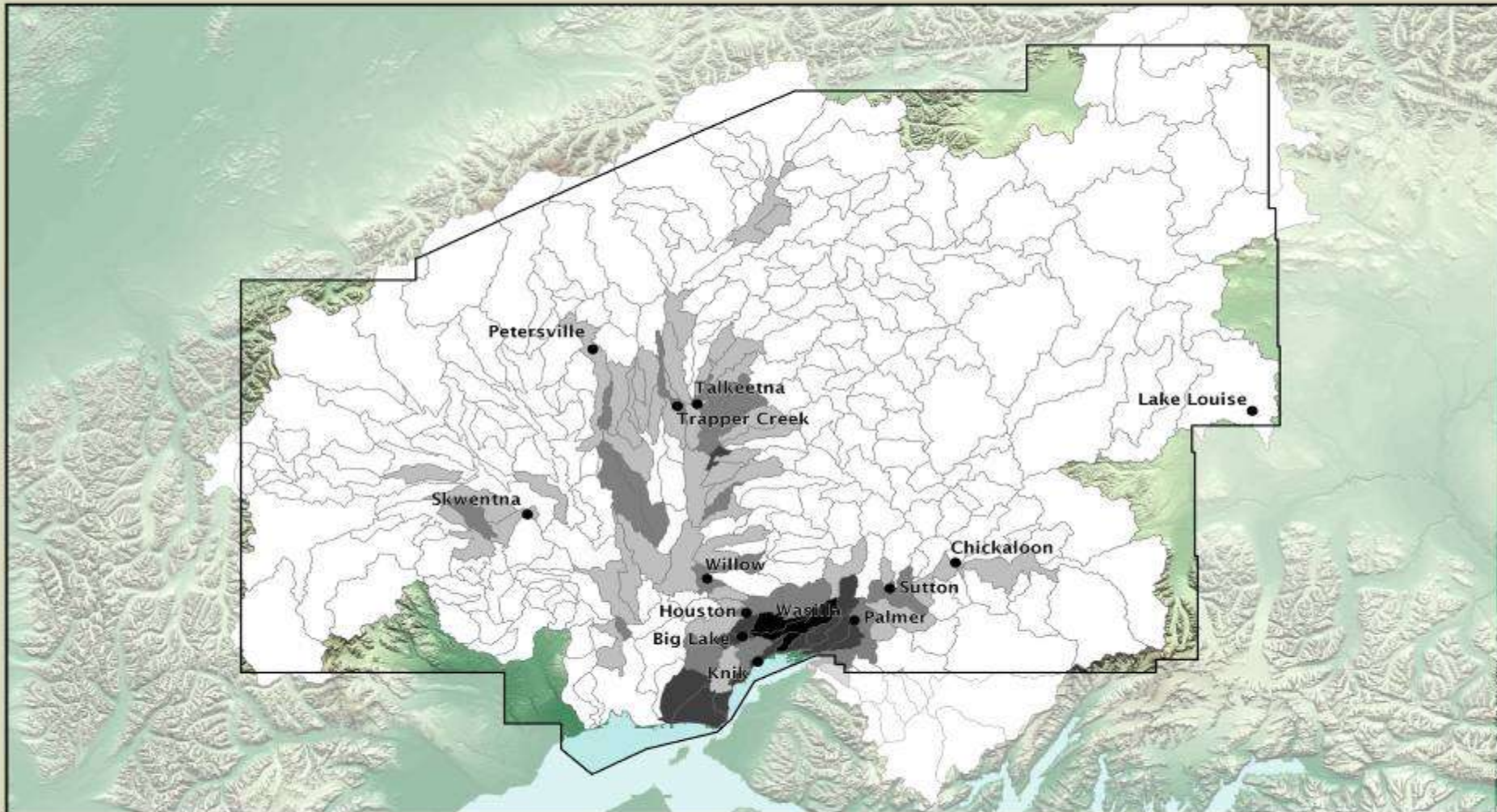
MAT-SU PRIORITIZATION 2010

Moose Habitat

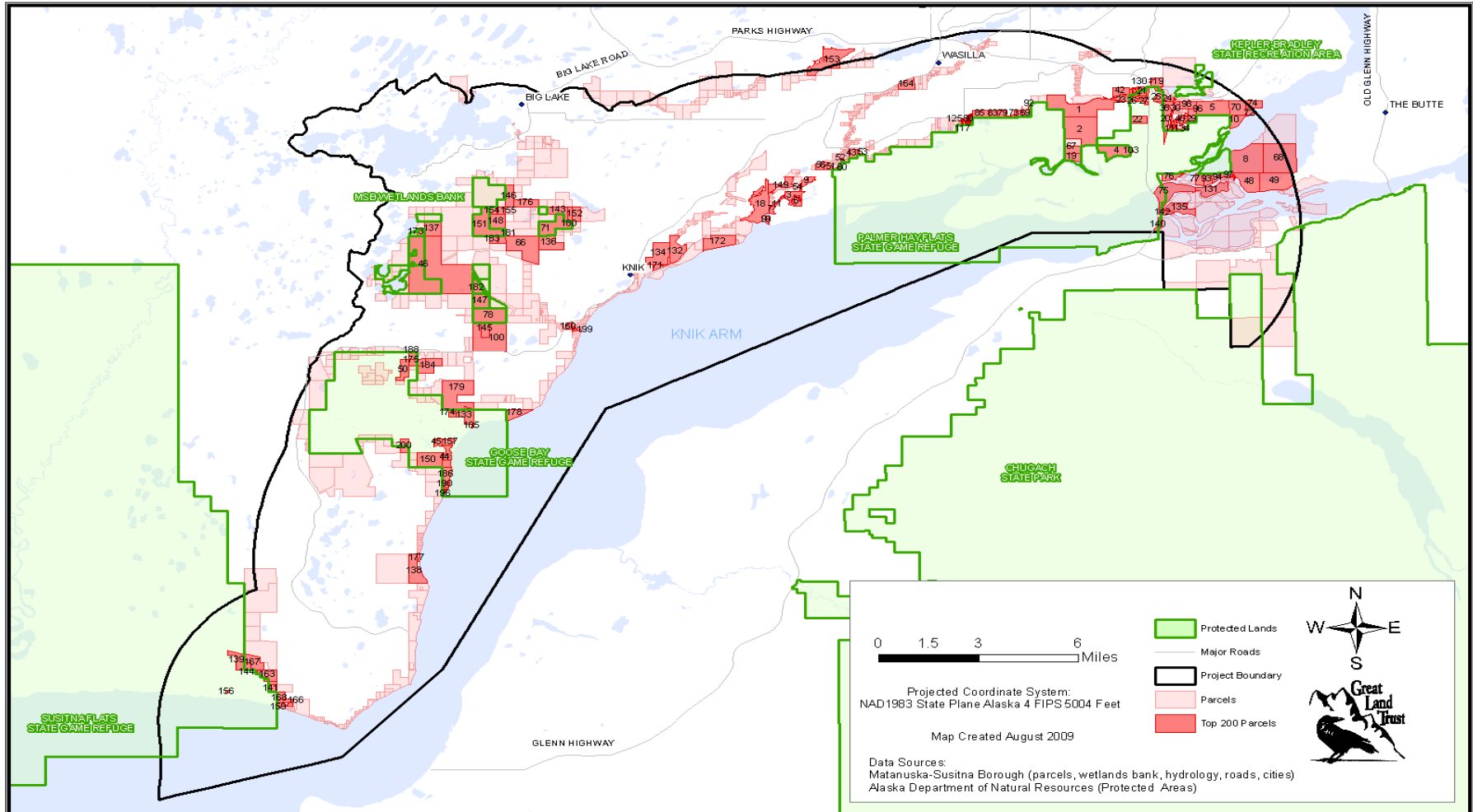


Development Vulnerability

VULNERABILITY OF SUBWATERSHEDS Mat-Su Borough



Port of Anchorage Mitigation Fund Prioritization



Top 200 Scored Parcels Identified By Score.

4800 acre Knik Islands Conservation Easement



2009 Prioritization Projects



Goose Bay Refuge

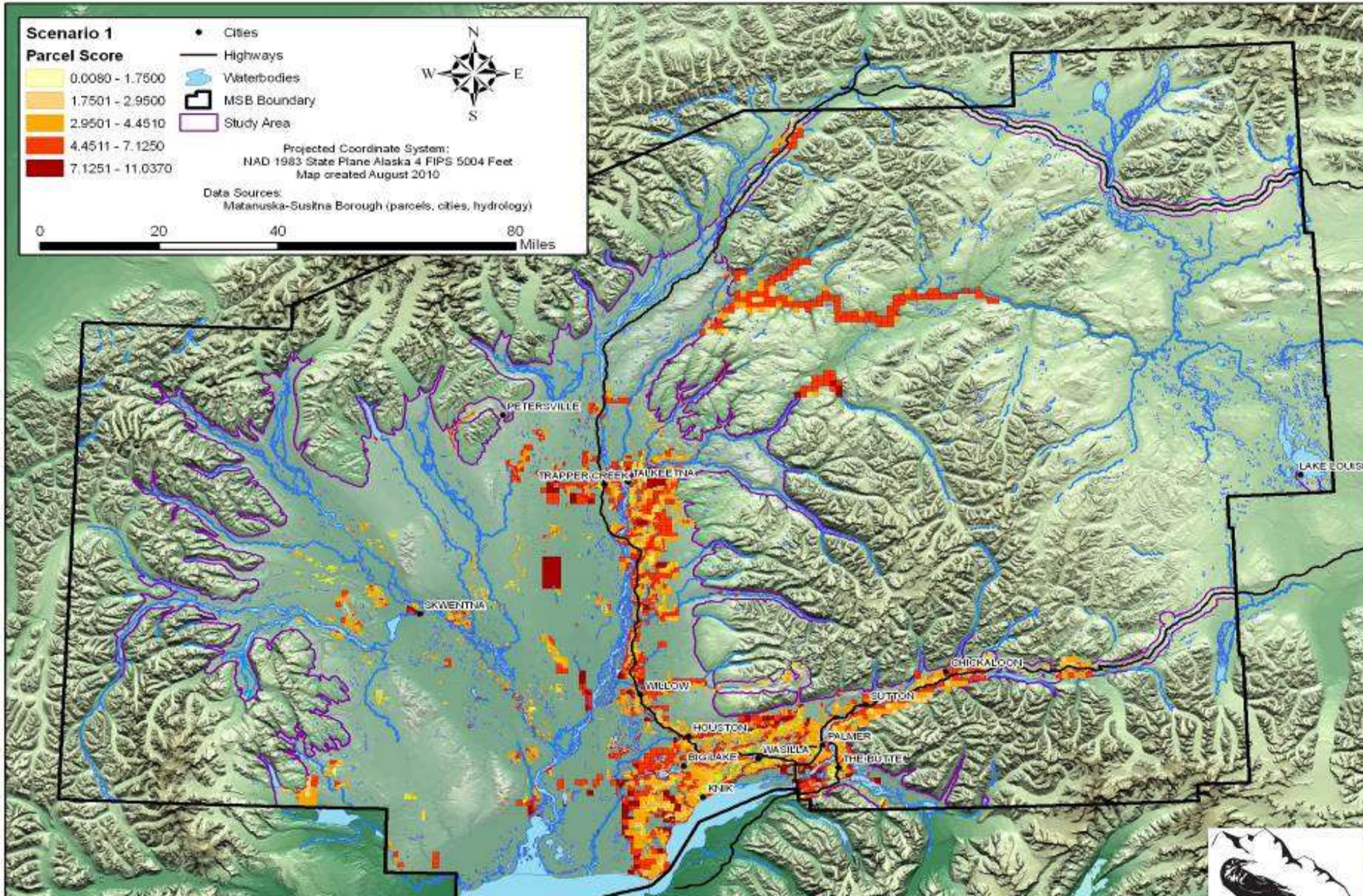


30 acre O'Brien Creek
Estuary

70 acre Goose Creek Estuary

MSB Conservation Value Parcel Map

Darker Red = Higher Conservation Value





© Carl Johnson
www.carljohnsonphoto.com

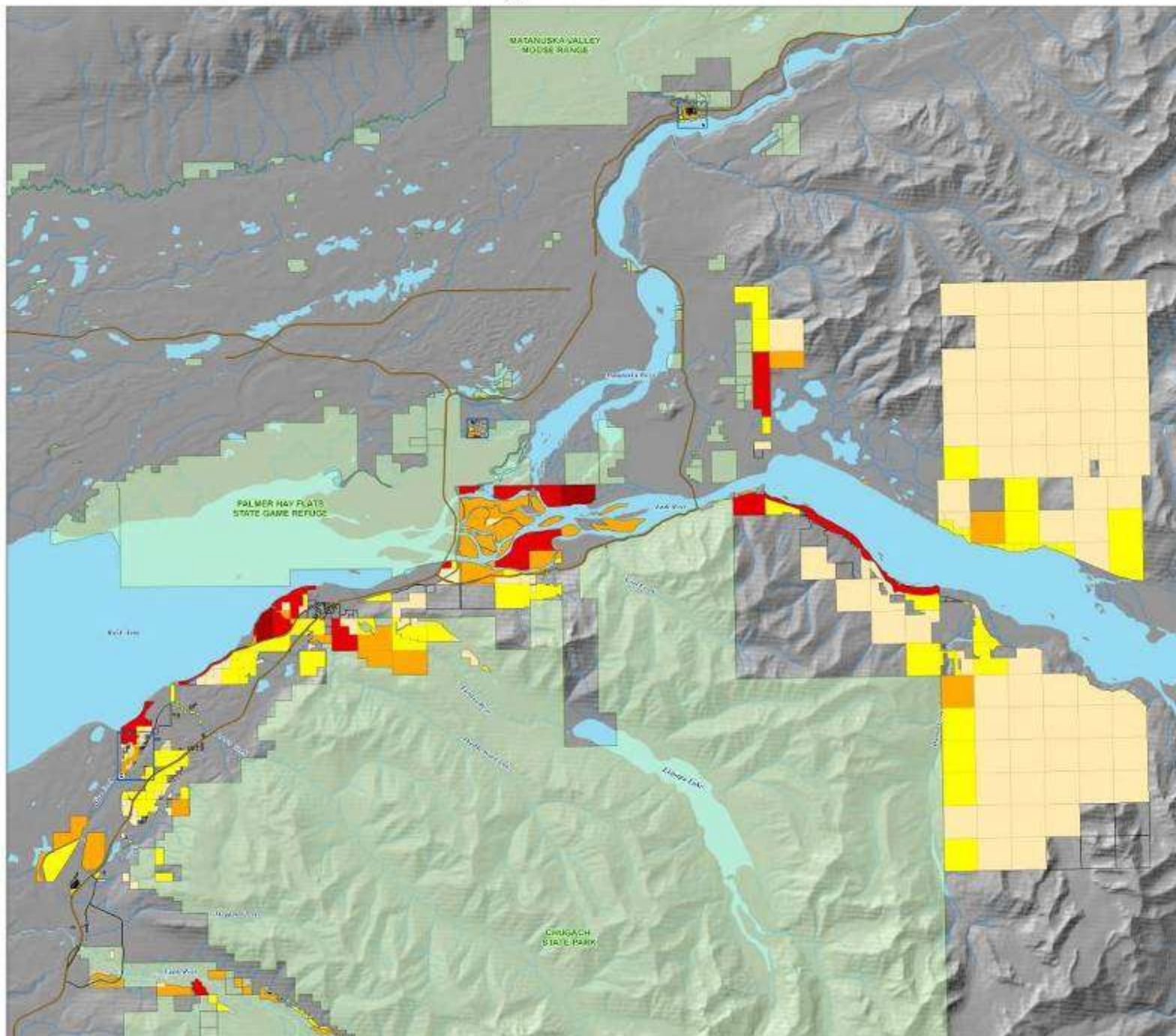
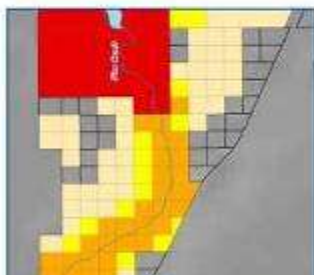
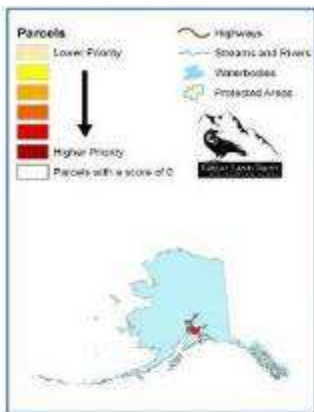
**170 acre Cottonwood Creek Estuary
(in development)**



© Carl Johnson
www.carljohnsonphoto.com

**900 Acre Wasilla Creek Wetlands
(expected closing January 2013)**

Final Prioritization Ranking for all Eklutna Lands



832 Acre Eklutna River, Edmonds Creek and Mirror Creek Estuary



532 Acre Fire & Mink Creek Estuary



Salmon ID Project

Project Goals:

1. Provide landowners with information about the important salmon habitat they own and BMP's they can employ to be good stewards of this community resource.
2. Provide landowners with resources to restore/enhance shoreline habitats
3. Provide landowners with information GLT's conservation programs.
4. Target landowners who own critical spawning, rearing and overwintering habitat and work with them to place a conservation easements on their property.





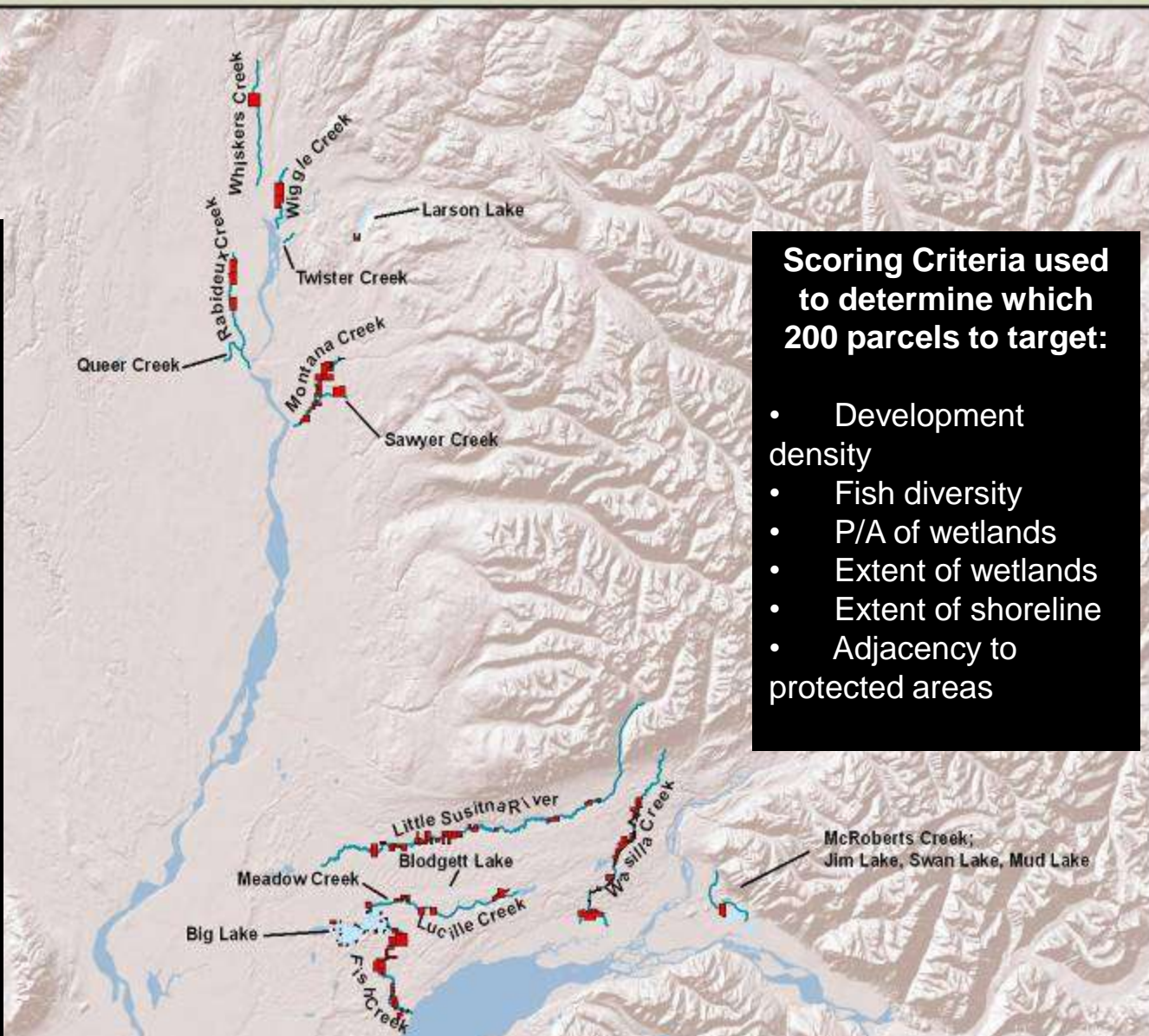
Initial Steps taken:

- 21 Priority Water bodies identified from a series of meetings with salmon experts
- All parcels within 200' of an identified priority water body were selected
- Parcels were filtered to exclude State-owned land
- Approx. 2,000 parcels identified initially

Filters:
Parcel Size (5 acres or greater)

Scoring Criteria used to determine which 200 parcels to target:

- Development density
- Fish diversity
- P/A of wetlands
- Extent of wetlands
- Extent of shoreline
- Adjacency to protected areas



Next Steps

- Produce habitat stewardship outreach materials and them mail out to identified landowners.
- Follow-up personally with key landowners
- Cultivate 10 conservation projects and use secured AKSSF funds to help with CE/ Acquisition costs



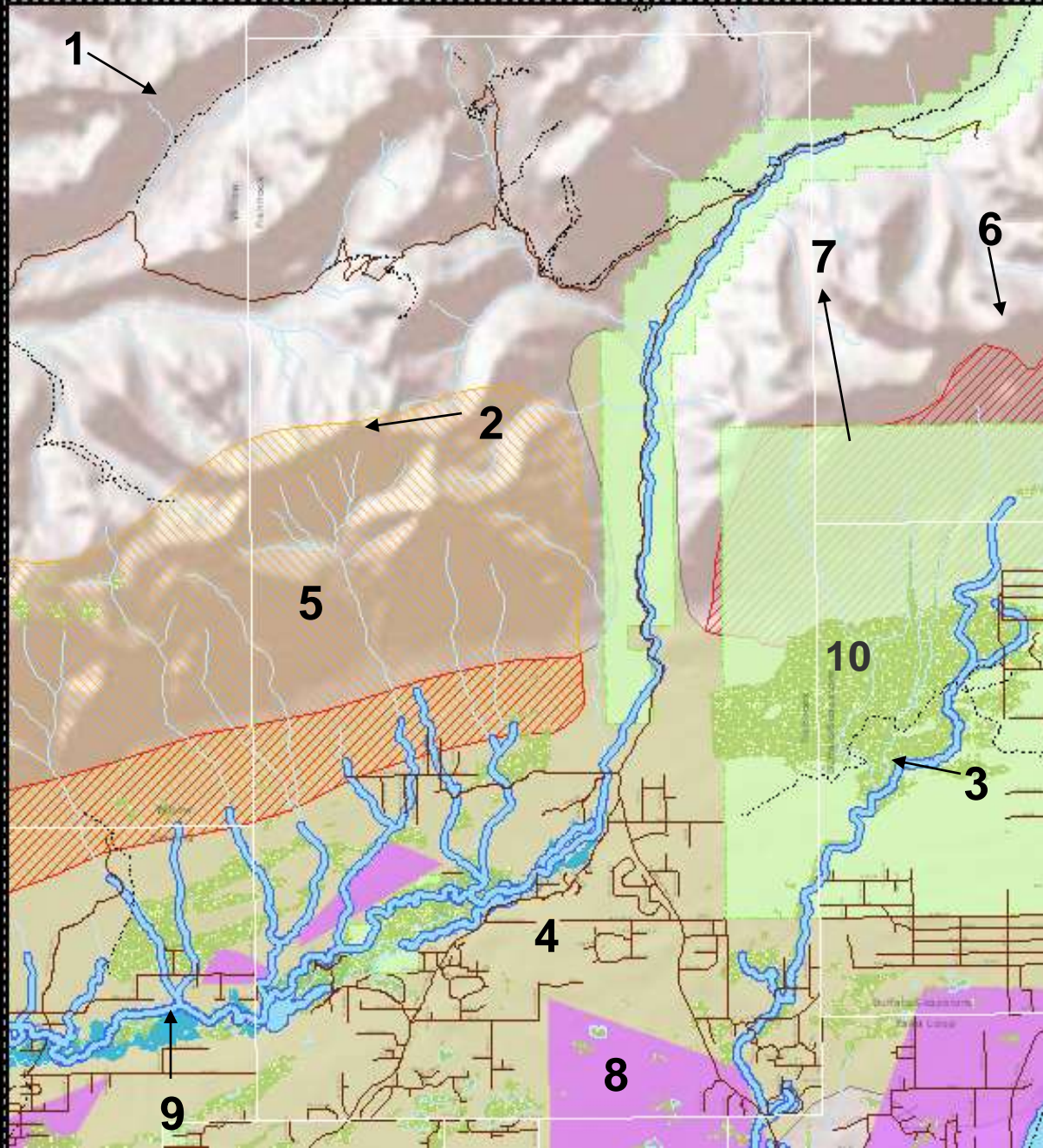
Community Asset Mapping Project

Project Goals:

1. Provide a greater understanding of Community Assets/GI and ecosystem services within Mat-Su Borough communities.
2. Provide opportunities for public dialogue about development locations and the conservation of Community Assets resources.
3. Develop a new community focused data set that will enhance GLT's ability to identify high priority projects and to explain/justify why certain areas should be targeted for conservation, from the communities perspective.



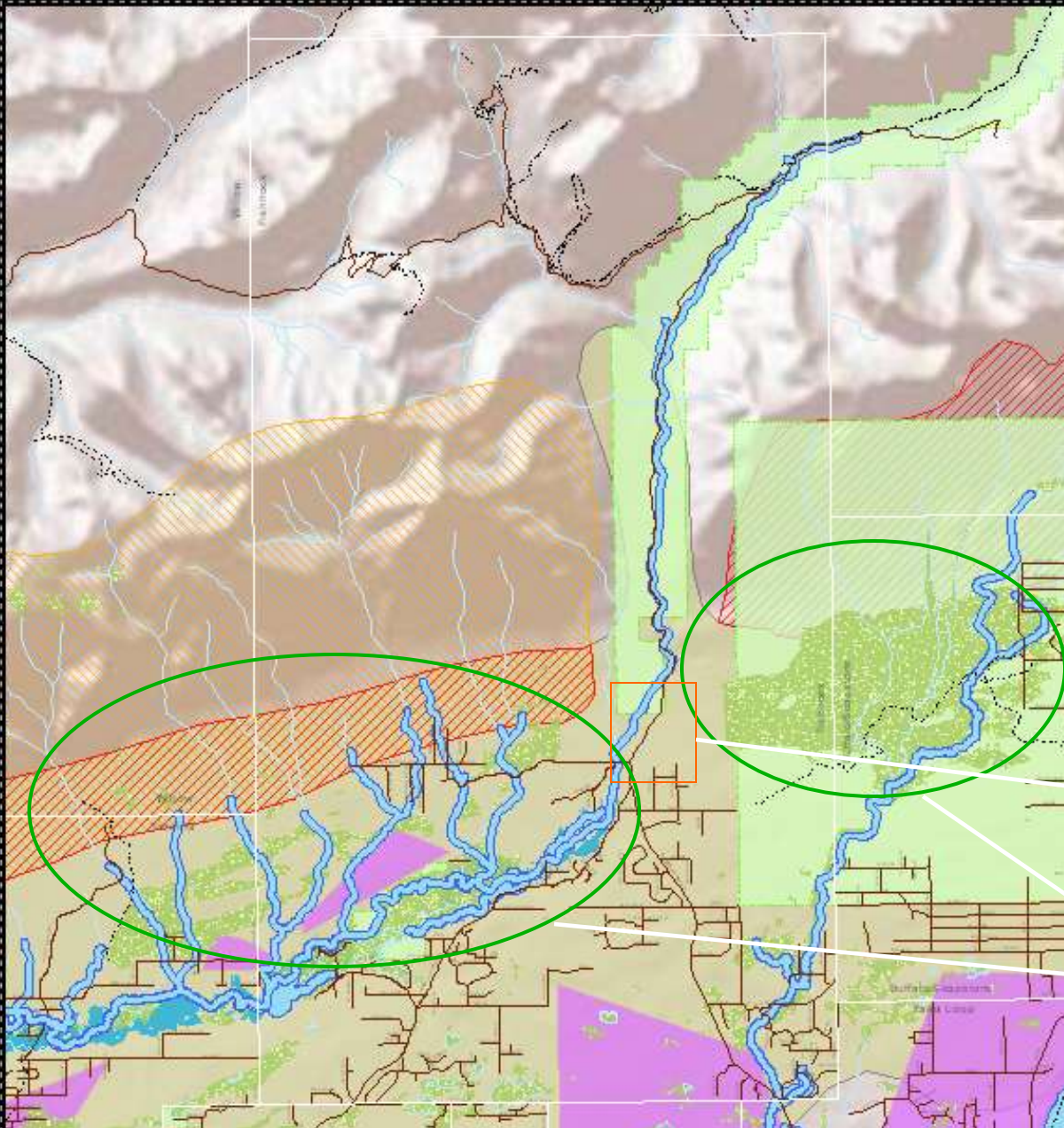
Data Layers



- 1) Trails (black dashes)
- 2) Streams and Lakes (light blue)
- 3) Anadromous Waters (light blue shading)
- 4) Moose Wintering Habitat (light brown shading)
- 5) Moose Calving Habitat (orange hatching)
- 6) Moose Rutting Habitat (red hatching)
- 7) Protected Areas (light green shading)
- 8) Important Farm Lands (purple shading)
- 9) Floodplain Data (bright blue)
- 10) Wetlands (darker green shading)

Identify the Hubs & Corridors

1. Identify "hubs" where data layers overlap
2. Identify "corridors" linking "hubs"



Corridors

Hubs



Final Map For Fishhook CC

GREEN INFRASTRUCTURE PLANNING

Fishhook Community Council



- Community Council Boundaries
- Hubs
- Corridors
- AWC Watersheds
- Major Roads



0 0.5 1.0 1.2 1.8 Miles



LITTLE SUSITNA HUB

produced forest; wetlands; timber; fish habitat; water; salmon; water; timber; water; timber

MOOSE RANGE HUB

produced forest; wetlands; timber; water; salmon; water; timber; water; timber; water; timber

FARM HUB

Fish habitat, water; timber

FARM HUB

Fish habitat, water; timber

PO Box 101272
 Anchorage, AK 99510
www.greeninfrastructure.org
 (907) 278-4998



Next Steps...

- Complete community asset maps for all 23 areas
- Share the information with community councils, developers, realtors, conservation partners, MSB staff and elected officials
- Incorporate the data into GLT's GIS prioritization tools



*Thank
You*



Great Land Trust
907-746-6406
907-278-4889
www.greatlandtrust.org