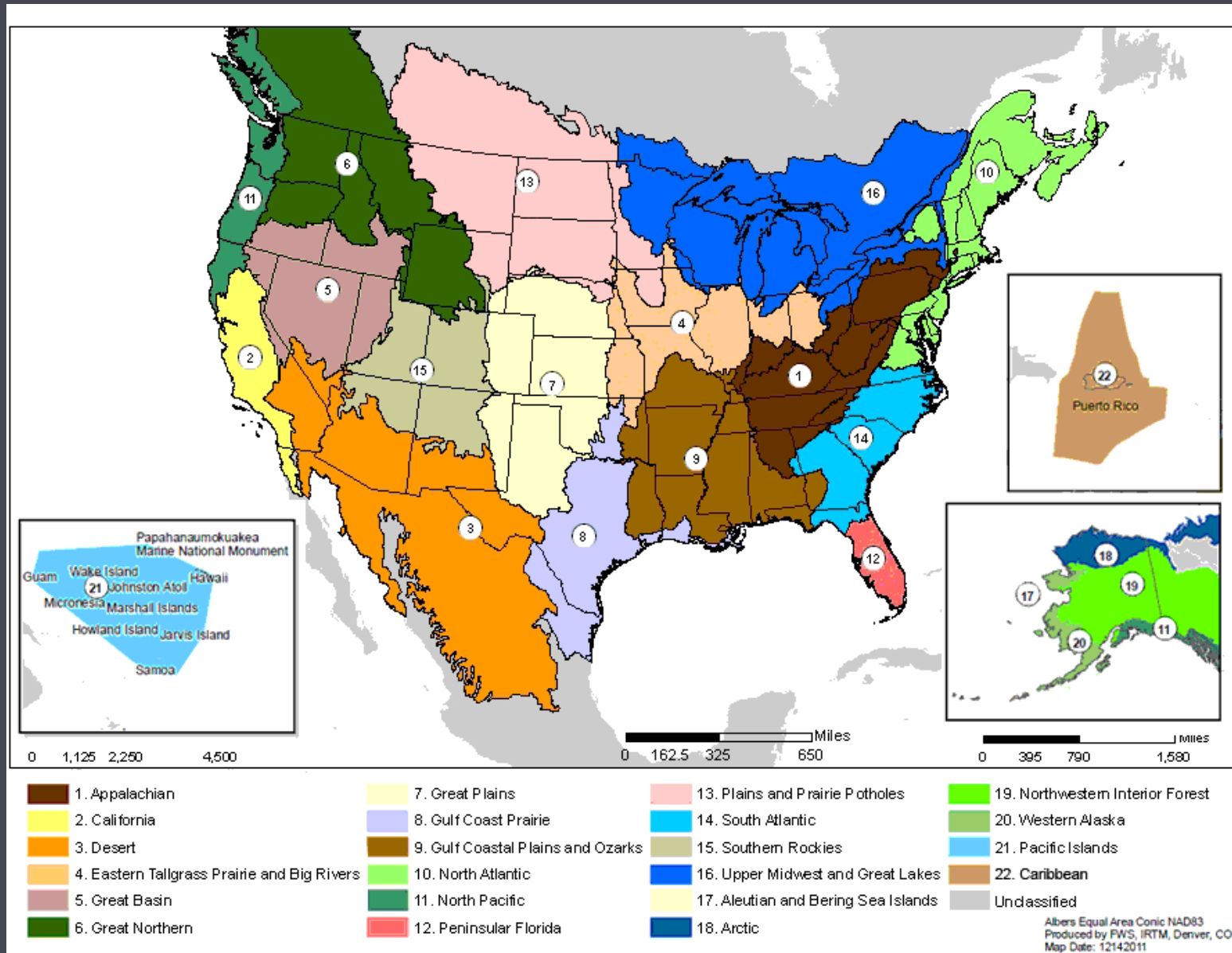


Alaska's Landscape Conservation Cooperatives (LCCs)



National LCC Network





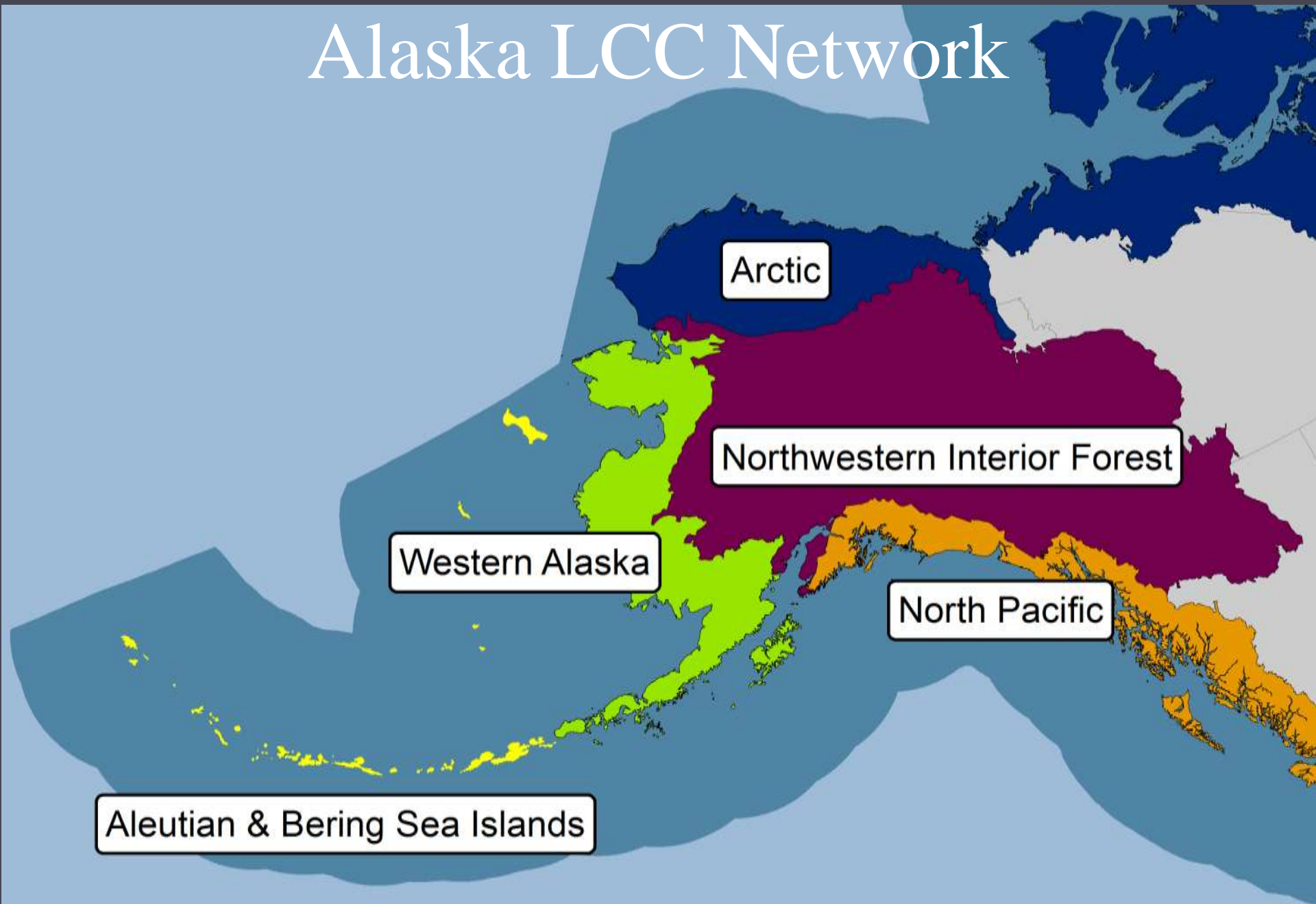
Department of the Interior Climate Change Strategy Built upon Secretarial Order 3289 (9/14/2009):

- Landscape Conservation Cooperatives (LCCs)
- Climate Science Centers (CSCs)
- NOAA Climate Service
- Association of Fish and Wildlife Agencies and State climate change plans and strategies
- Existing conservation partnerships



LANDSCAPE CONSERVATION
COOPERATIVES

Alaska LCC Network



Alaska LCC Contacts

- **Aleutian and Bering Sea Islands**
Doug Burn - Coordinator
Aaron Poe - Science Coordinator
- **Arctic**
Greg Balogh - Coordinator
Philip Martin - Science Coordinator
- **North Pacific**
John Mankowski - Coordinator
Mary Mahaffy - Science Coordinator
- **Northwestern Interior Forest**
John DeLapp - Coordinator
Amanda Robertson - Science Coordinator
- **Western Alaska**
Karen Murphy - Coordinator
Joel Reynolds - Science Coordinator
- **State of Alaska - Contacts**
Doug Vincent-Lang - Acting Director Division of Wildlife Conservation
Sue Rodman - LCC Program Coordinator

LCC Model

Federal, State, Local, Tribal Governments
NGOs, & Private Landowners

Planning, analysis,
and decision-making



Adaptation needs met:
changes in policy,
management, etc.



Monitoring and
data collection



Climate Science
Centers

Science and
model
development

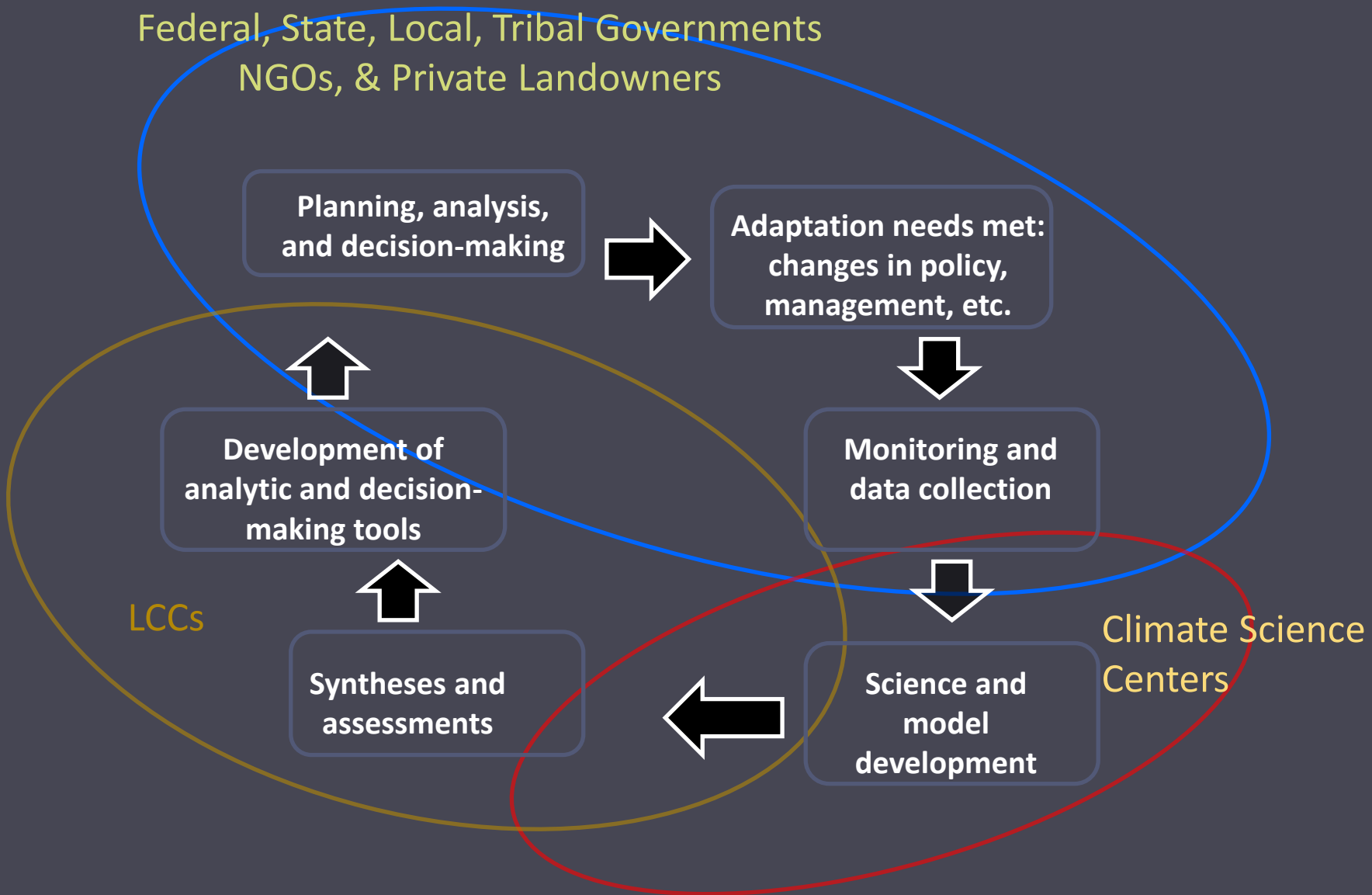


Syntheses and
assessments

LCCs



Development of
analytic and decision-
making tools



What LCCs Will Do

- Identify conservation goals and associated science information needs.
- Inform landscape-scale conservation and management decisions.
- Develop improved understanding of habitat and population response to changes in climate and ecosystem processes.



What LCCs Will NOT Do

- Replace agency responsibilities
- Supersede agency decision making authority
- Initiate Regulatory actions
- Negate value/role of existing partnerships and cooperatives



LCC Structure

- Core staff = LCC Coordinator and Science Coordinator
- Steering Committee
- Partners (e.g., agencies, universities, NGOs, industry)
 - Work groups
 - Science committee
 - Peer reviewers
 - Principal investigators
 - Others



LCC Support

- Three tiers of LCC funding in FY12:
 - Arctic LCC - \$2.2 million
 - Western Alaska LCC - \$1.2 million
 - North Pacific LCC - \$1.2 million
 - Northwest Boreal LCC - \$500,000
 - Aleutian and Bering Sea Islands LCC - \$500,000

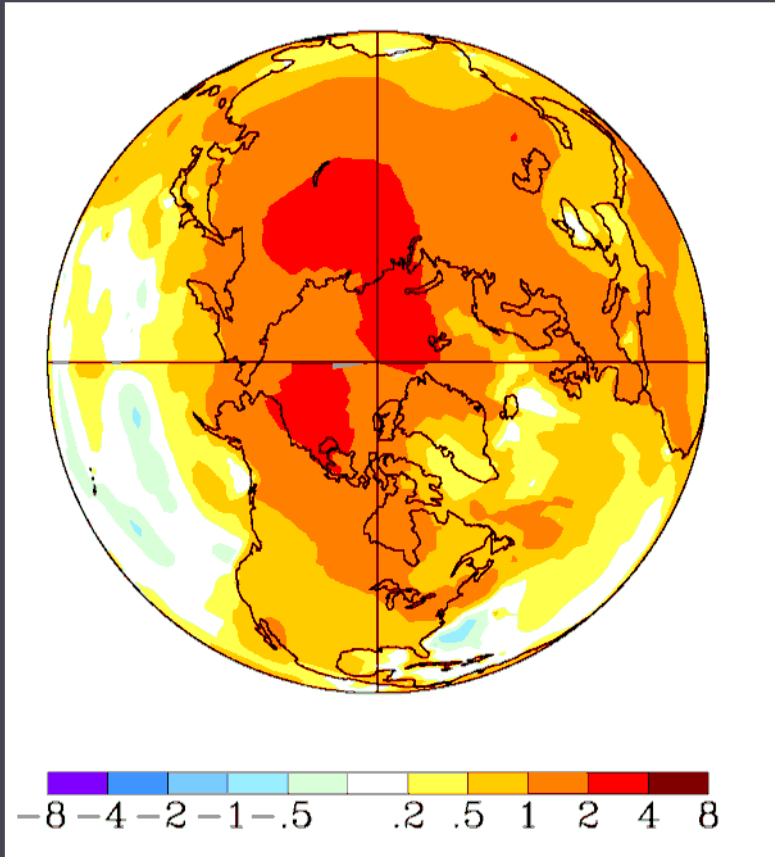


Arctic LCC

Arctic Landscape Conservation Cooperative



Arctic LCC



*Temperature Change, C
1958-2008*

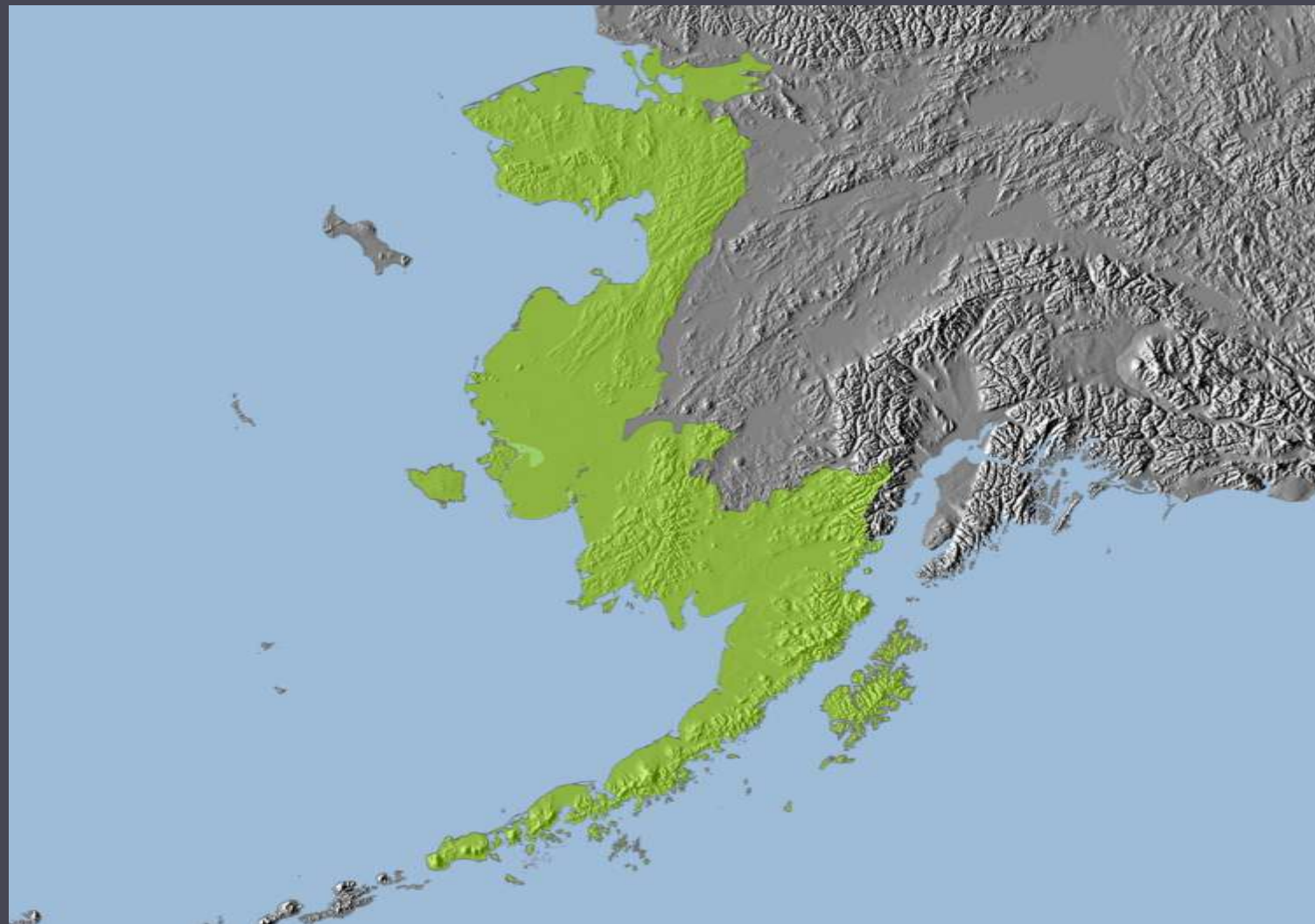
The Arctic LCC is focused on climate-driven changes on land, inland and in nearshore waters, with a focus on habitat as it affects resources in Alaska.

Arctic LCC

Distinctions

- 50 Ongoing Projects in the Arctic coordinated by the Arctic LCC.
- The Arctic LCC has spent \$4 million on projects from 2010-12.
- The Arctic LCC has leveraged over \$8 million to address climate-related issues in the Arctic.
- New data gathered by the Arctic LCC is not available elsewhere and is shared.

Western Alaska LCC

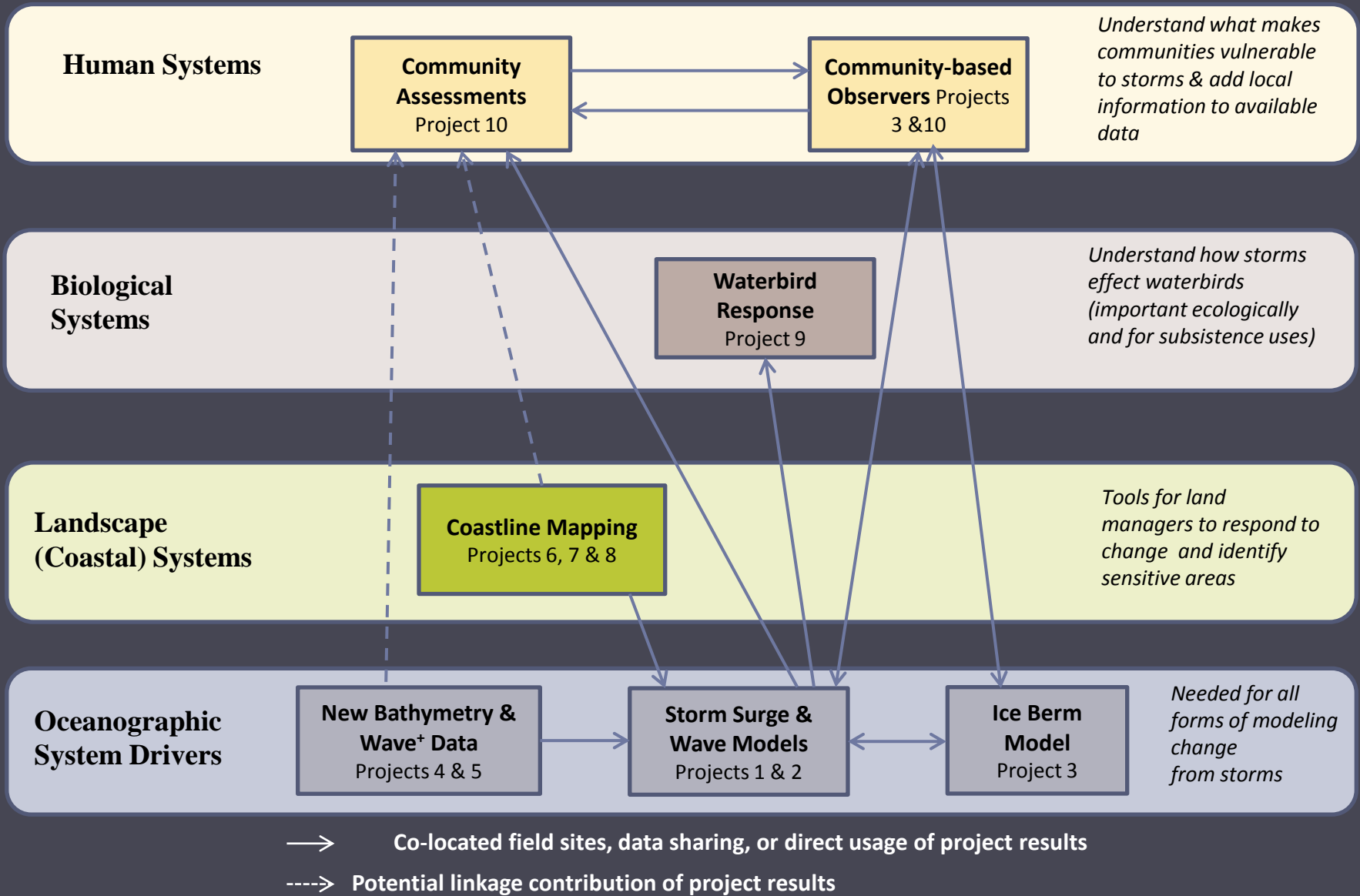


Western Alaska LCC

Conservation Goals

- Promote communications to enhance understanding regarding effects of climate change in Western Alaska.
- Support coordination and collaboration among partners to improve efficiencies in their common science and information activities.
- Identify and support research, and data collection, analysis, and sharing that address common information needs of land and resource management decision makers.
- Enable synthesis of information at landscape and larger spatial scales.
- Enhance resource management in western Alaska through applied science and technology transfer.

Western Alaska LCC 2012-2013



Aleutian and Bering Sea Islands LCC



Aleutian and Bering Sea Islands LCC

Mission

The ABSI LCC promotes coordination, dissemination, and development of applied science to inform conservation of natural and cultural resources in the face of climate change and other landscape-scale stressors.

- Commercial Shipping Traffic
- Invasive / Introduced Species
- Marine Contaminants /Pollutants
- Climate Variability & Change
(including Loss of Sea Ice)
- Ocean Acidification
- Commercial Fishing



Northwestern Interior Forest LCC (aka Northwest Boreal LCC)





Northwest Boreal LCC

Conservation Goals

- Promote communications to enhance understanding regarding effects of climate change and other landscape-scale stressors in the NWB region,
- Support coordination and collaboration among partners to improve efficiencies in their common science and information activities,
- Identify and support research, including data collection, analysis, and sharing that address common information needs of land and resource management decision makers,
- Enable synthesis of information at landscape and larger spatial scales,
- Enhance resource management in the NWB region through applied science, analytical tools, data management, and information transfer.



North Pacific Landscape Conservation Cooperative

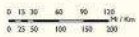
The North Pacific Landscape Conservation Cooperative is comprised of approximately 200,000 square miles (510,000 square kilometers) in six states or provinces. Public lands make up approximately 130,000 square miles (341,000 sq km) of the NPLCC, with 60,000 square miles (155,000 sq km) of Federal lands in the U.S. portion of the NPLCC and 70,000 square miles (180,000 sq km) of Crown lands in the Canadian portion of the NPLCC.

Coastline

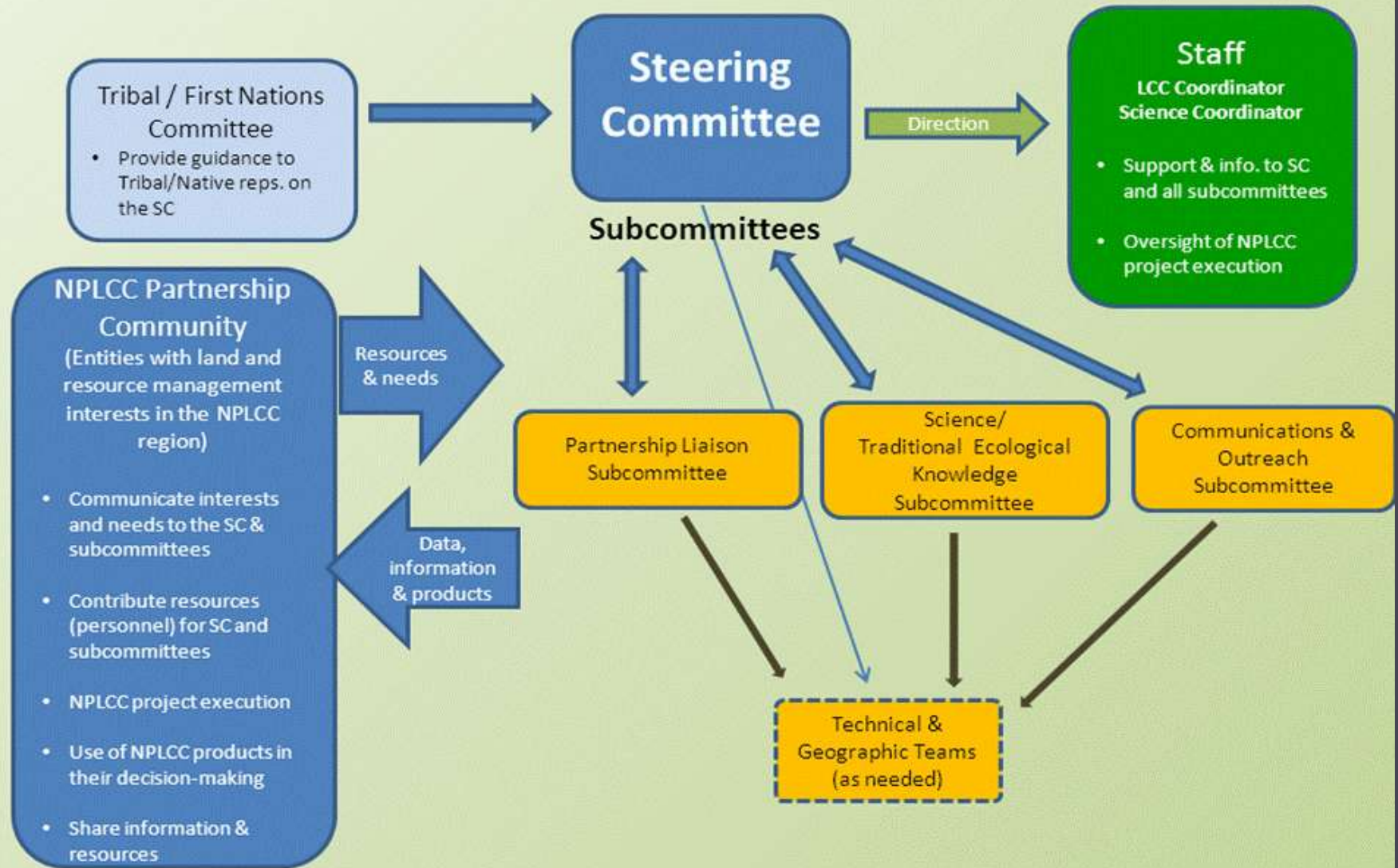
State/Province	Miles	Kilometers
Alaska	13,000	24,100
British Columbia	18,500	29,800
Washington	3,000	4,800
Oregon	1,400	2,250
California	580	900

Area

State/Province	Sq. Miles	Sq. Kilometers
Alaska	54,400	141,250
Yukon Territory	1,600	4,150
British Columbia	76,600	198,400
Washington	20,200	52,300
Oregon	31,600	81,850
California	17,600	45,600



North Pacific Landscape Conservation Cooperative



LCC Contacts for Mat-Su

Northwestern Interior Forest

- - John DeLapp – Coordinator
 - john_delapp@fws.gov
 - 907-786-3694

 - Amanda Robertson - Science Coordinator
 - amanda_robertson@fws.gov
 - 907-456-0445