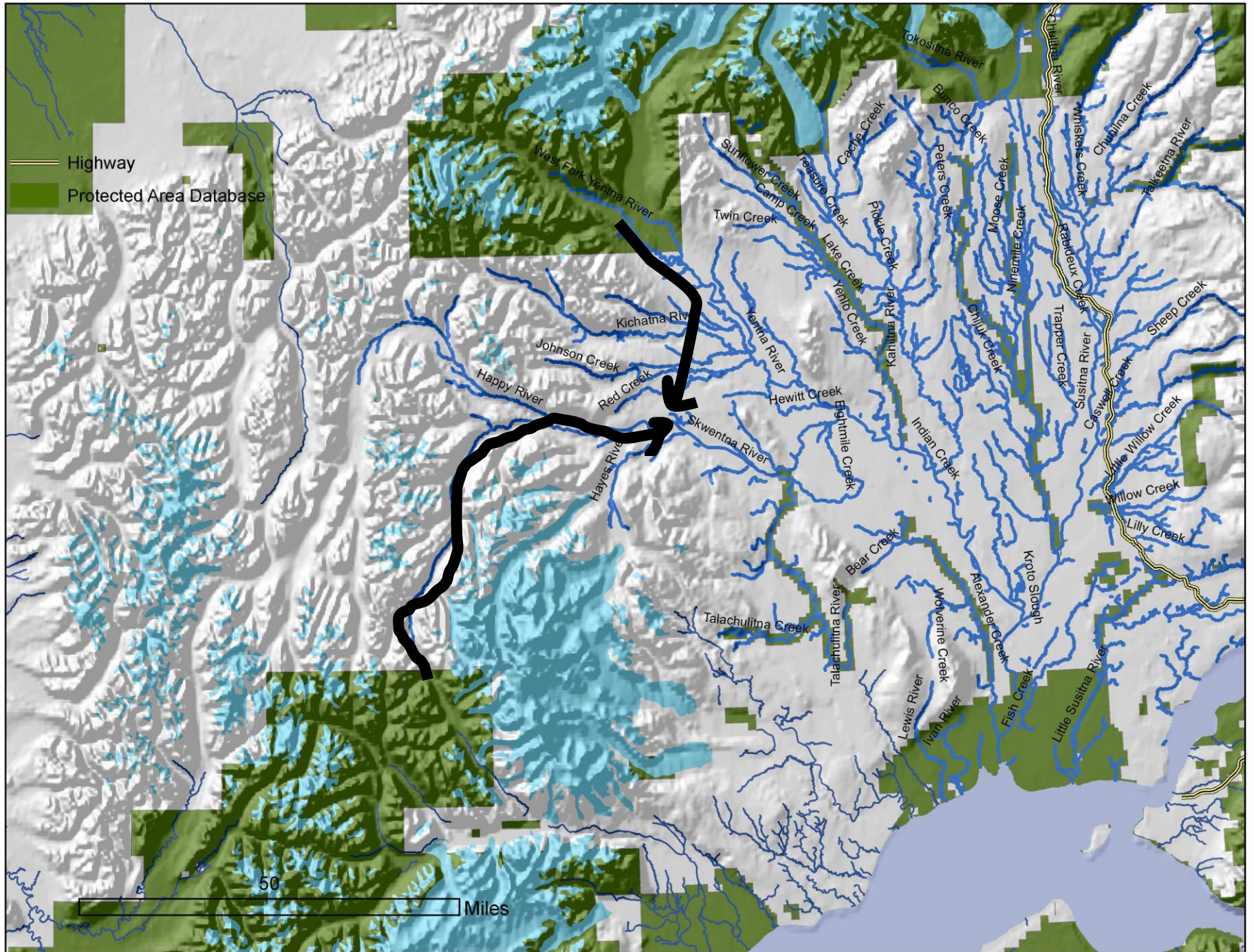
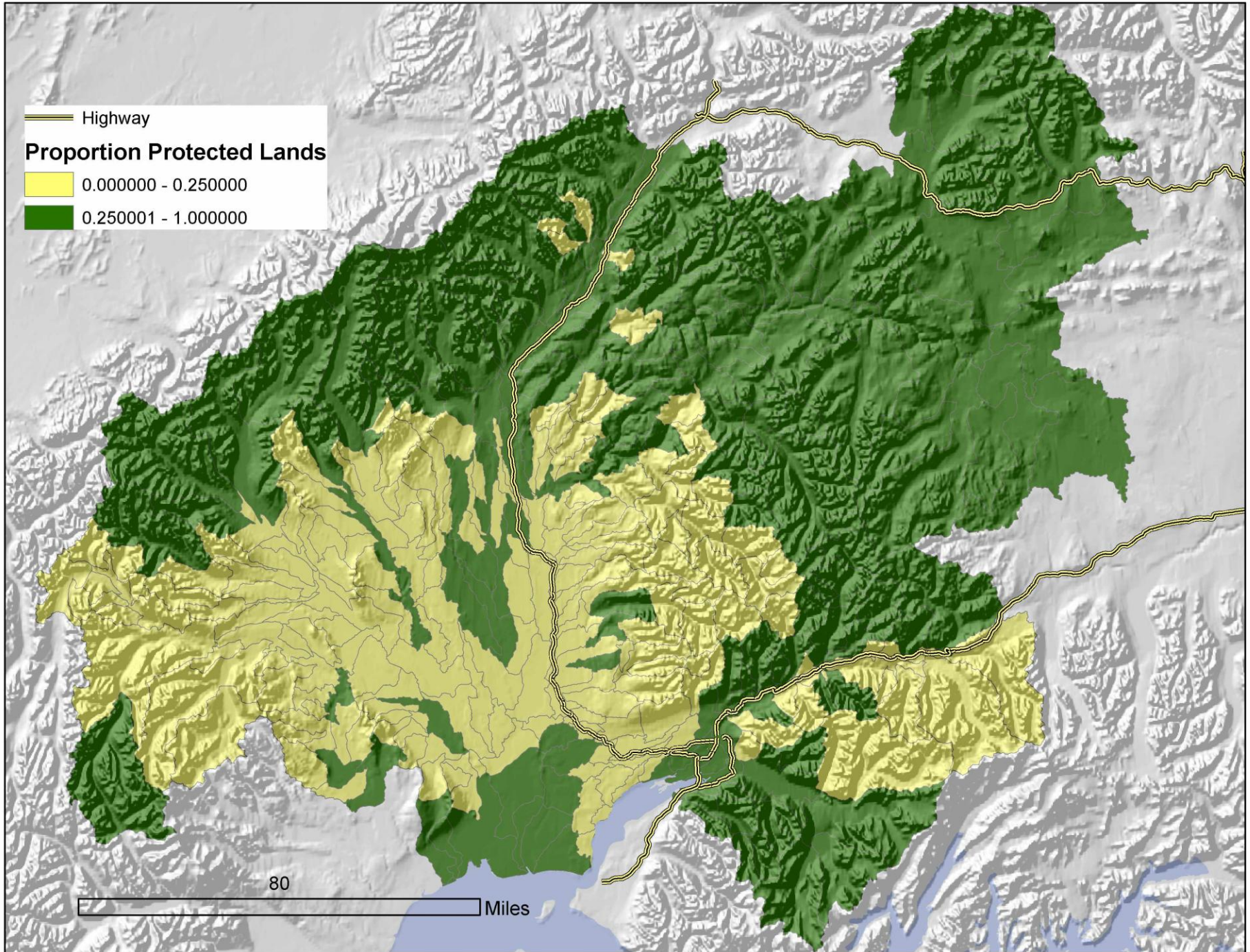
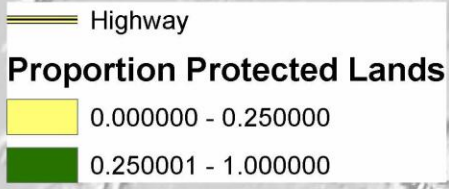


- Highway
- Protected Lands in Parcel Database
- Protected Area Database

80

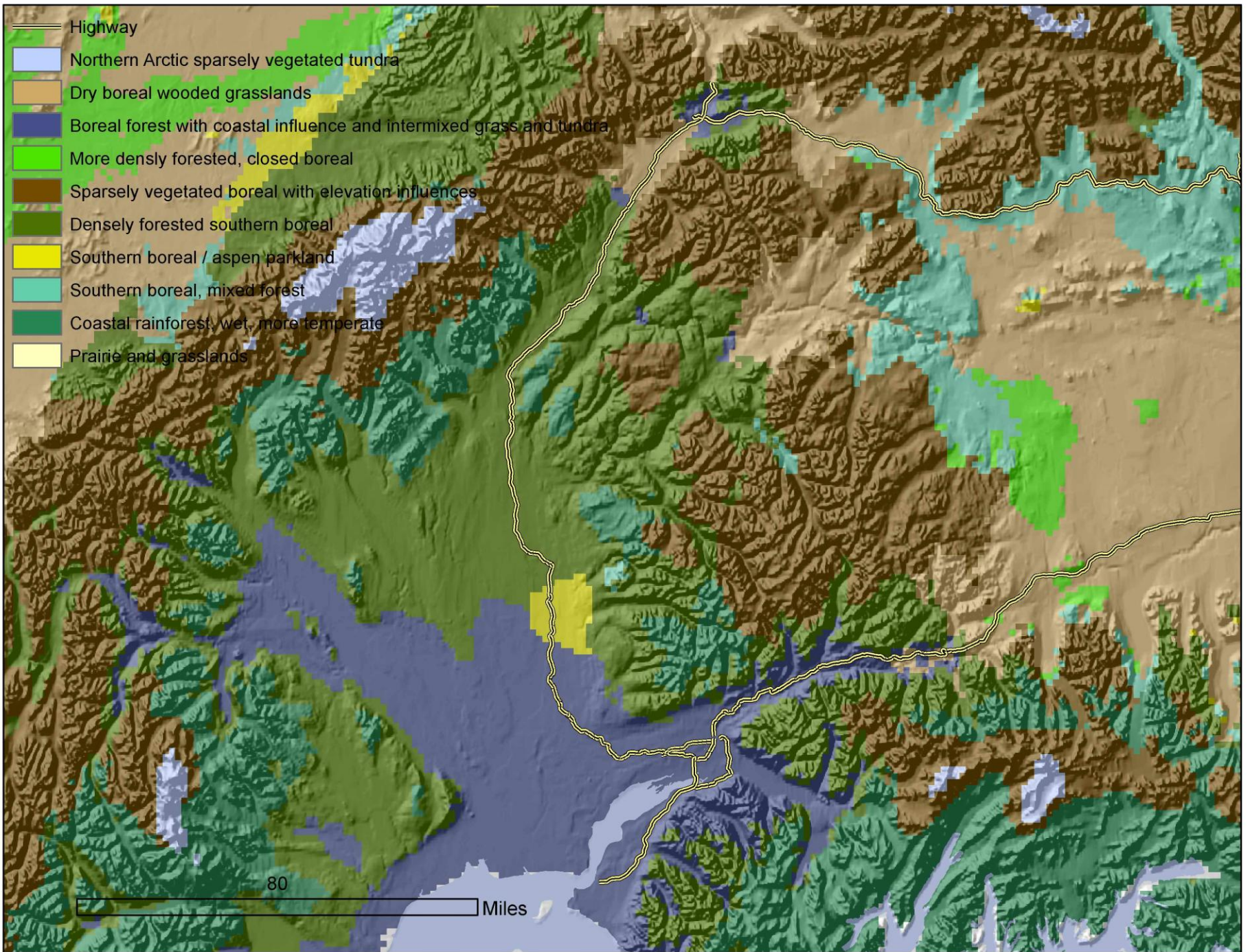
Miles

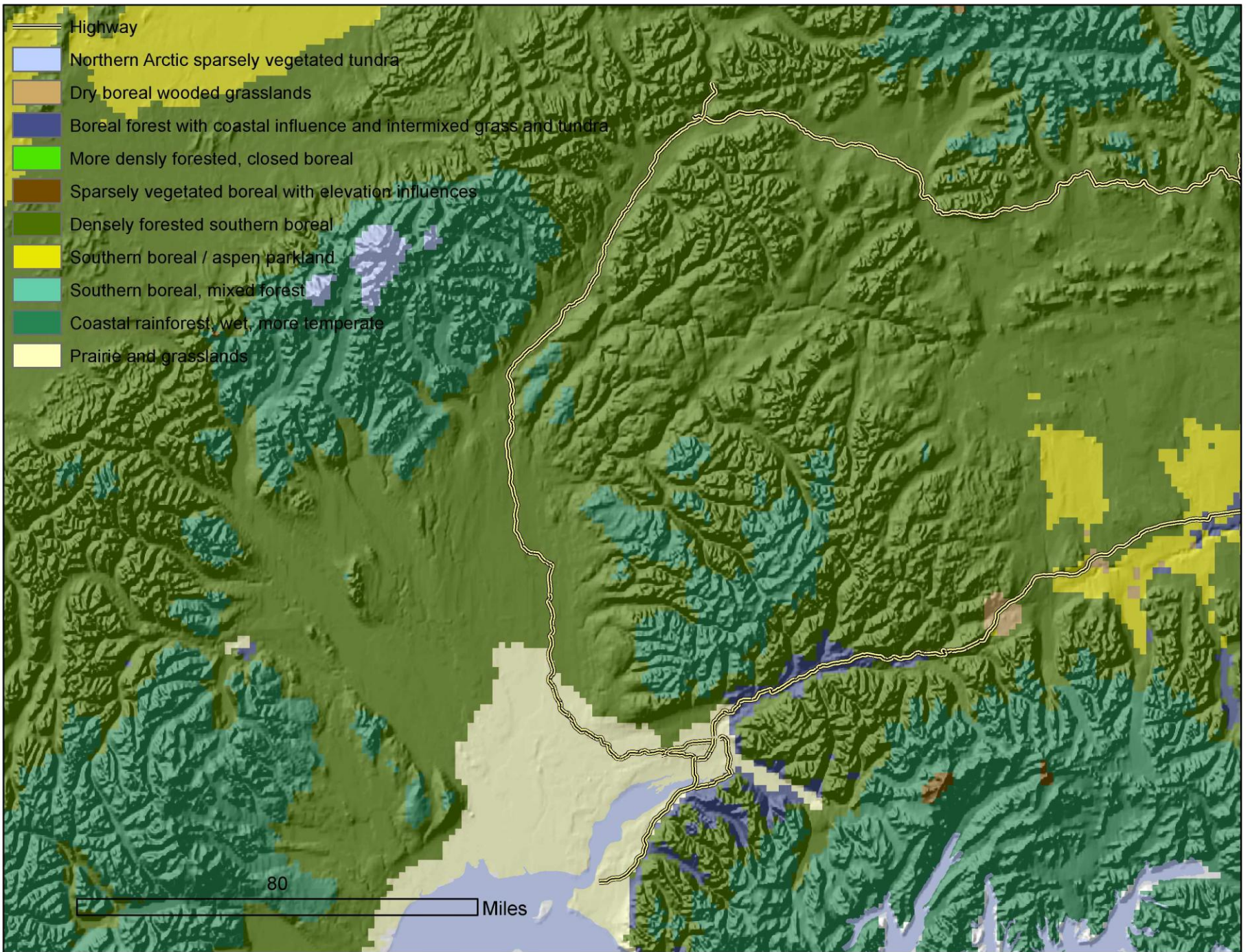




80

Miles





Highway

Proportion Biome Change

0-25%

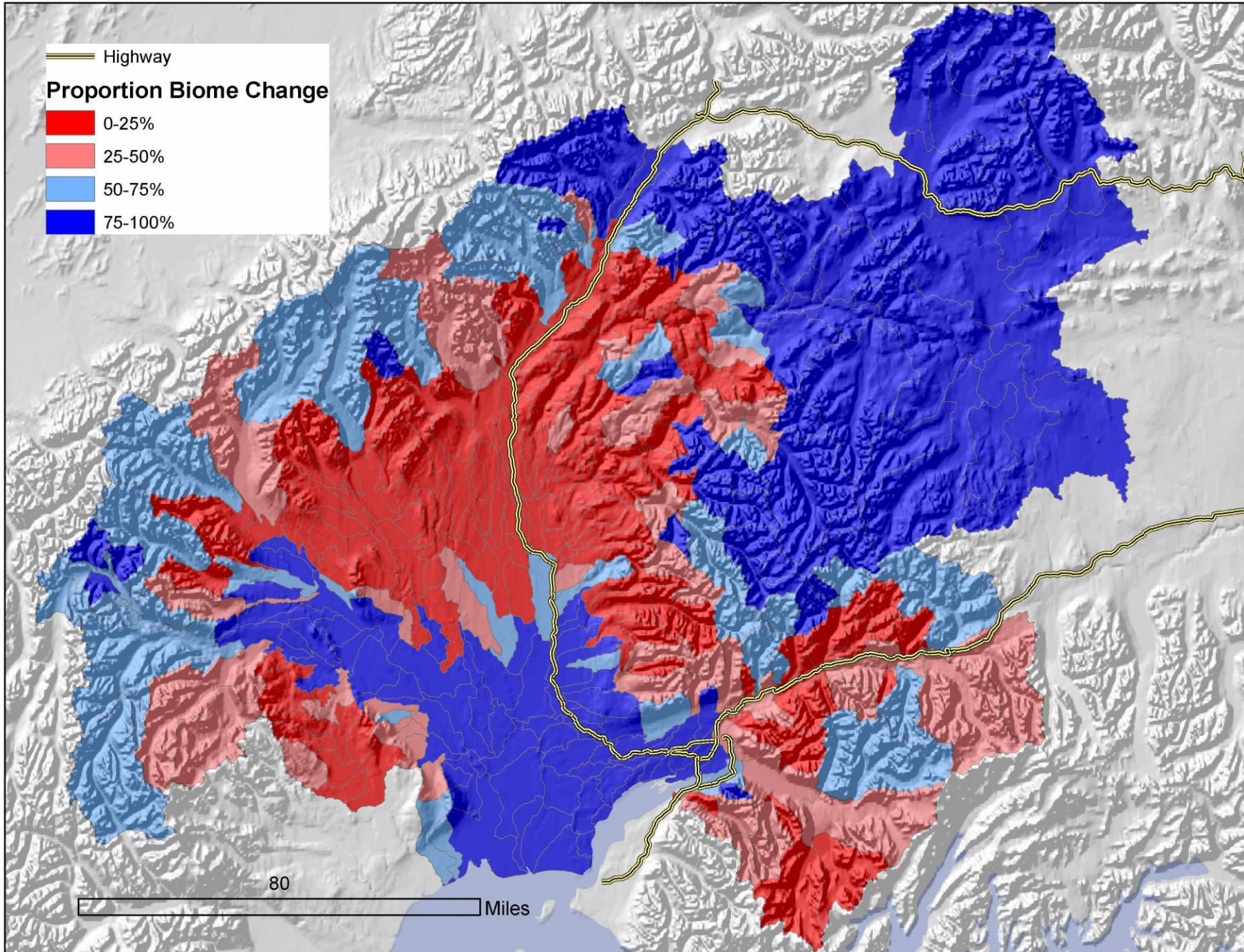
25-50%

50-75%

75-100%

80

Miles



Highway

Mean July Temp 2060-69 a1b, 5model

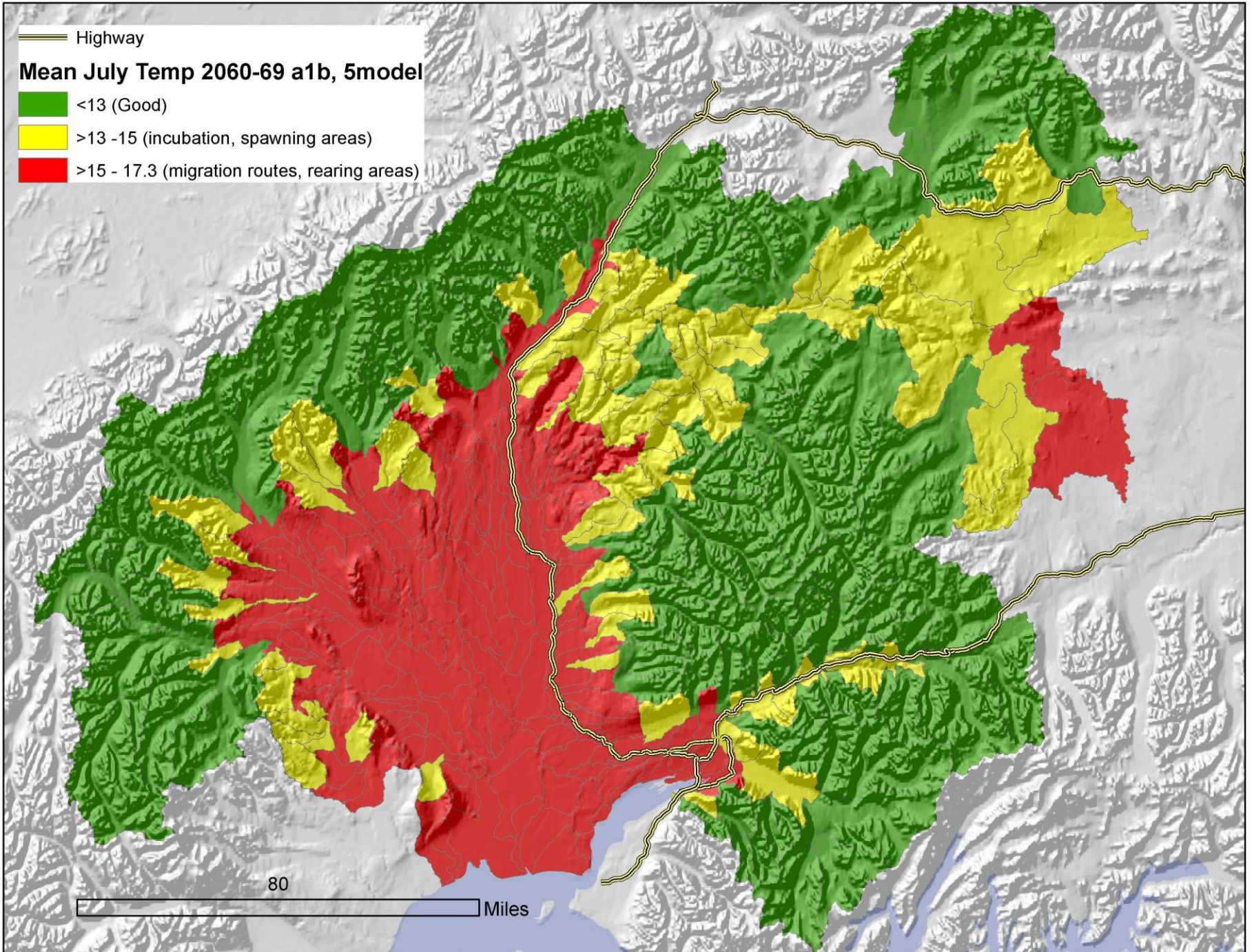
<13 (Good)

>13 -15 (incubation, spawning areas)

>15 - 17.3 (migration routes, rearing areas)

80

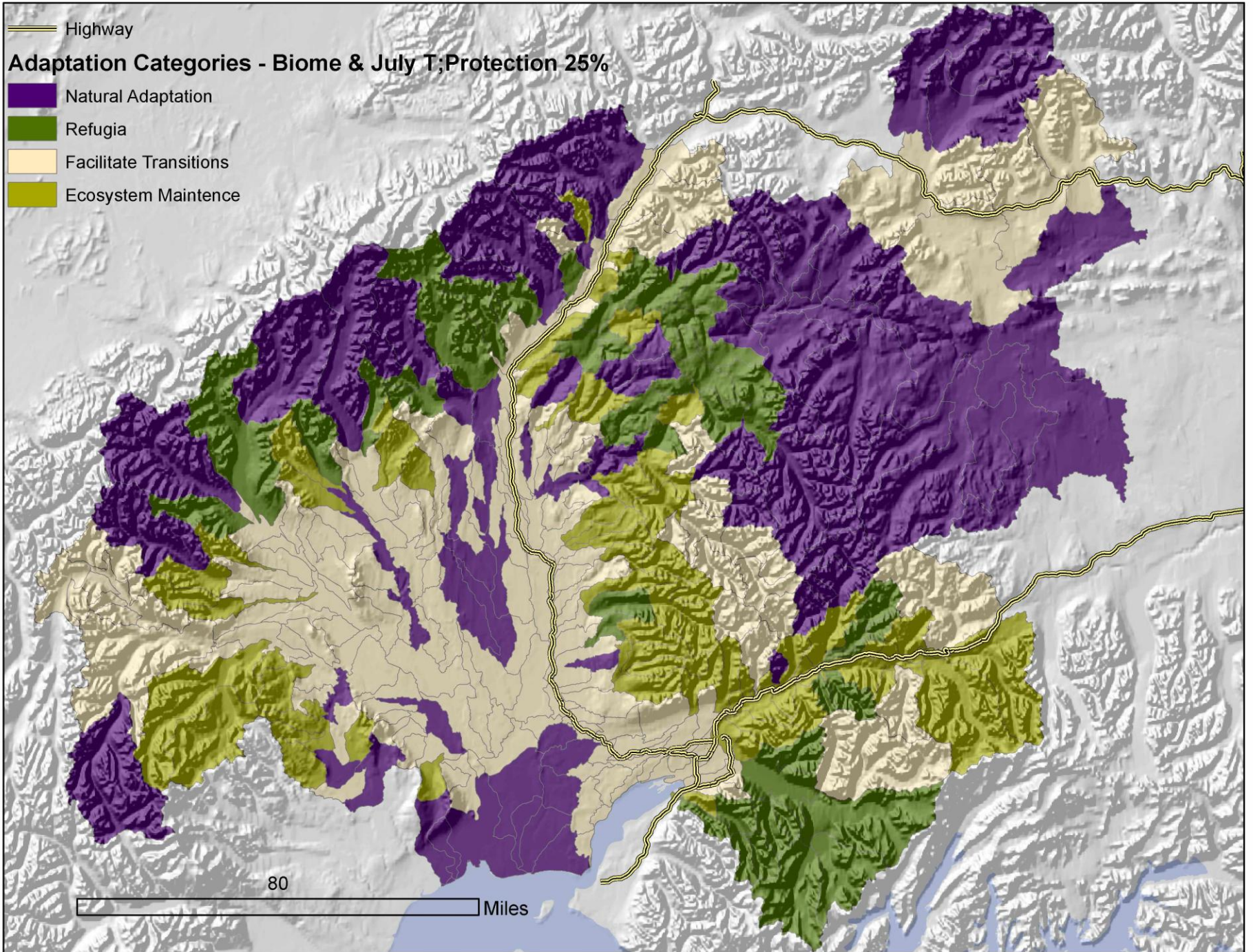
Miles



Highway

Adaptation Categories - Biome & July T; Protection 25%

- Natural Adaptation
- Refugia
- Facilitate Transitions
- Ecosystem Maintenance



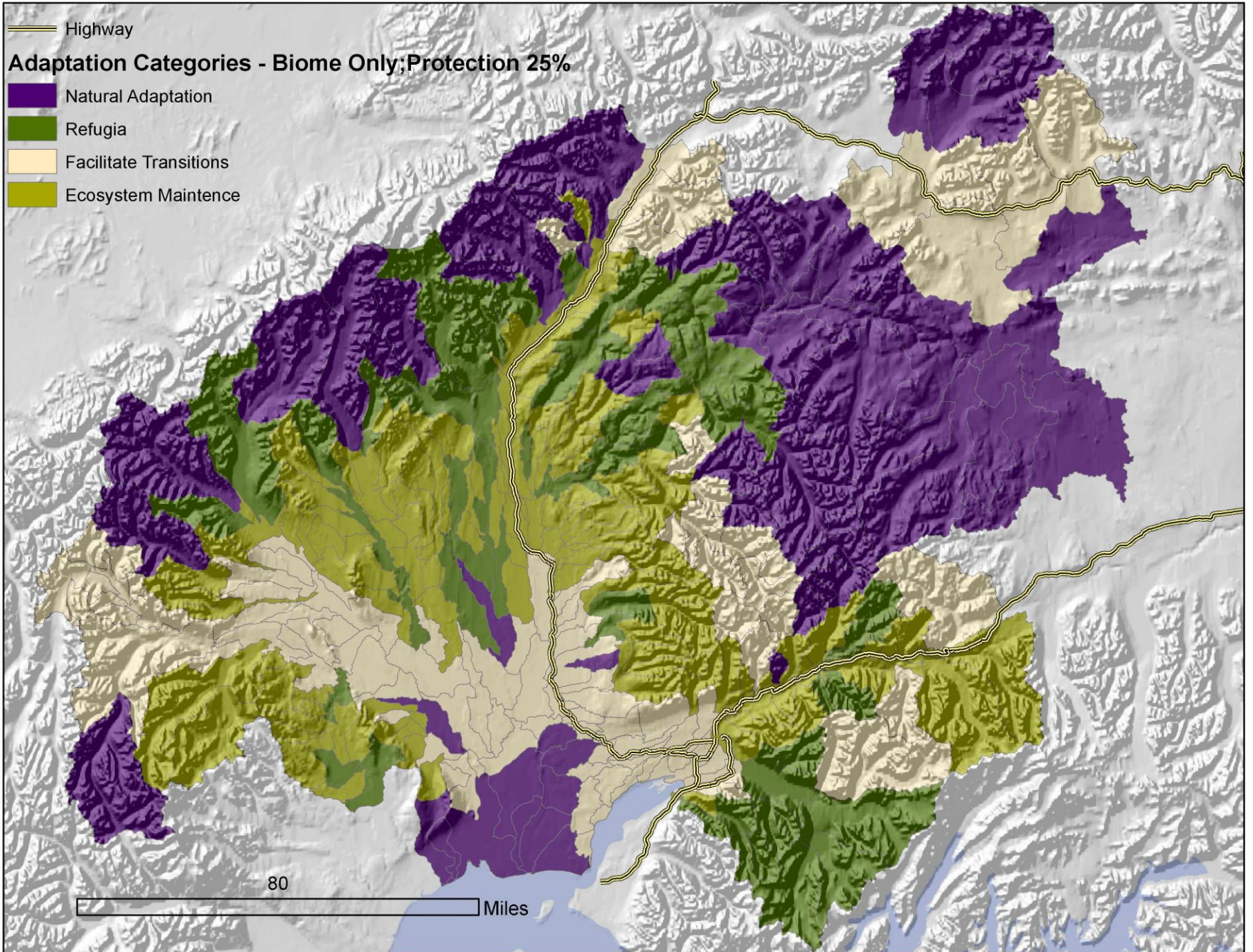
80

Miles

Highway

Adaptation Categories - Biome Only; Protection 25%

- Natural Adaptation
- Refugia
- Facilitate Transitions
- Ecosystem Maintenance



80

Miles