

An aerial photograph of a river winding through a dense forest. The river is surrounded by thick green vegetation, likely Elodea, which is growing in the water and along the banks. The forest consists of various types of trees, including tall evergreens and shorter deciduous trees. The overall scene is lush and green, with the river providing a clear path through the dense woods.

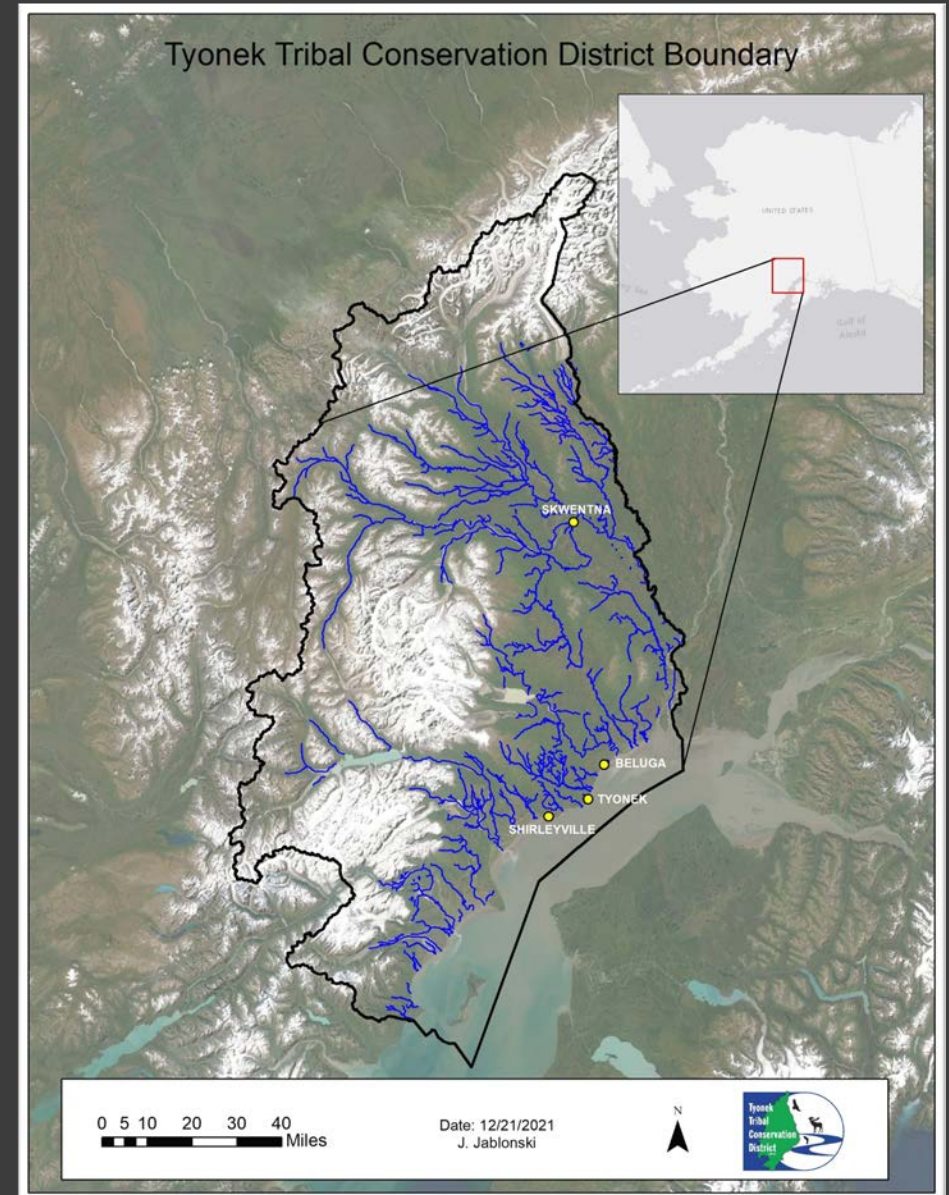
*Anadromous Waters and Elodea Surveys
in the Remote Western Mat-Su Borough*

Jillian Jablonski

Tyonek Tribal Conservation District

Tyonek Tribal Conservation District (TTCD)

- 6.6 million acres
- Shares boundaries with GMU 16B



Project Objectives

- Identify data gaps in AWC near proposed development and conduct fish surveys to add waterbodies/species/life stages to the AWC
- Conduct presence/absence surveys for Elodea in high-risk waterbodies

We identified regions where these needs overlapped and focused sampling efforts on a selected subregion



Tell me more about Elodea...

- Degrades salmon habitat
- Mat Su locations: **Alexander & Sucker lakes, Big Lake**



Anadromous waters in the remote western Mat Su

- Potential development in region- West Susitna Access
- Lots of water!
- Lots of salmon?



Methods

- Subregion SW of Alexander Lake
- Anadromous waters survey
- Elodea surveys

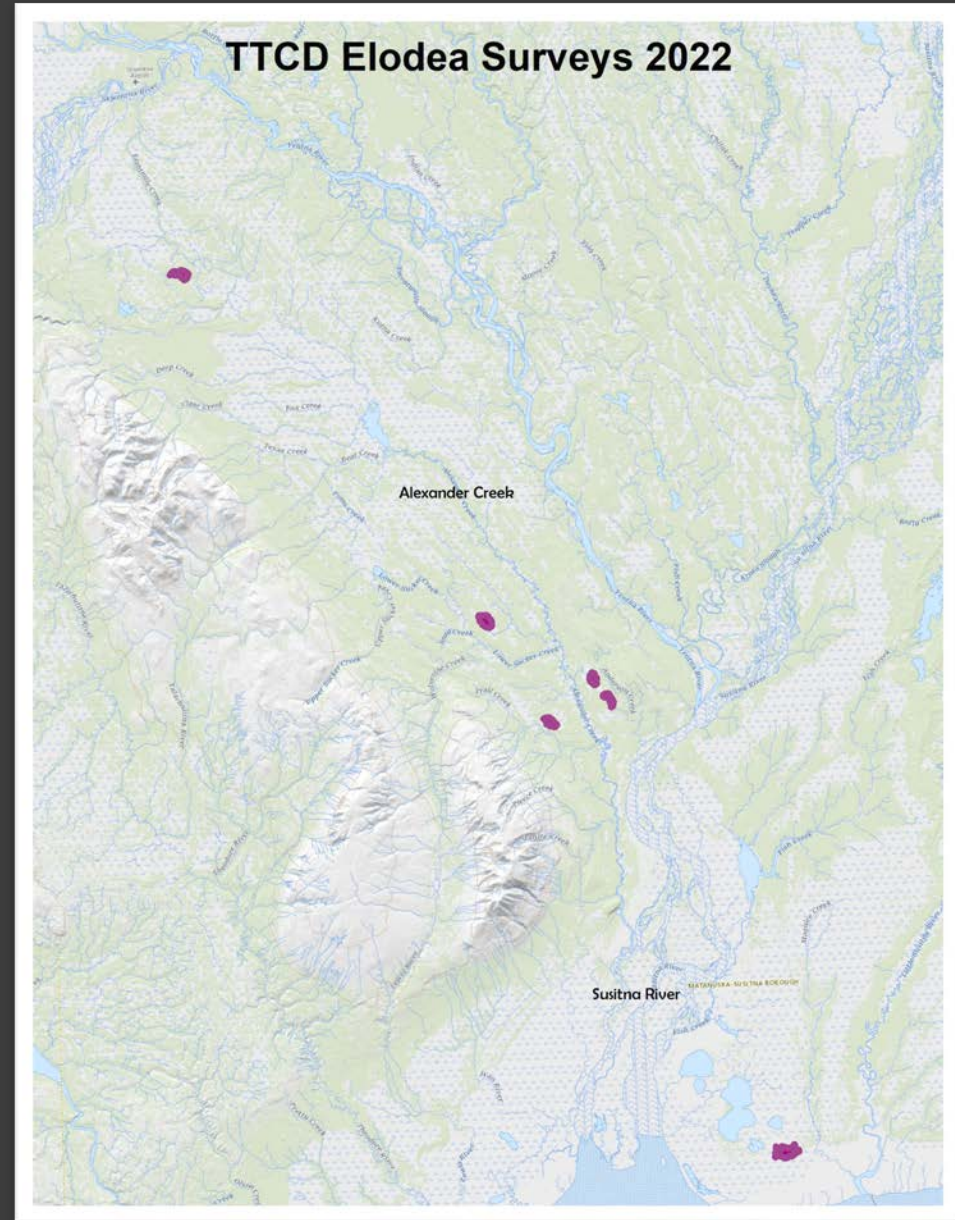


Elodea Results

Short answer: No Elodea detected!



2022 Elodea Survey Locations



AWC Survey Results

- Visited 19 sites
- Anadromous fish found at 8 sites, DV widespread
- Submitted 8 nominations

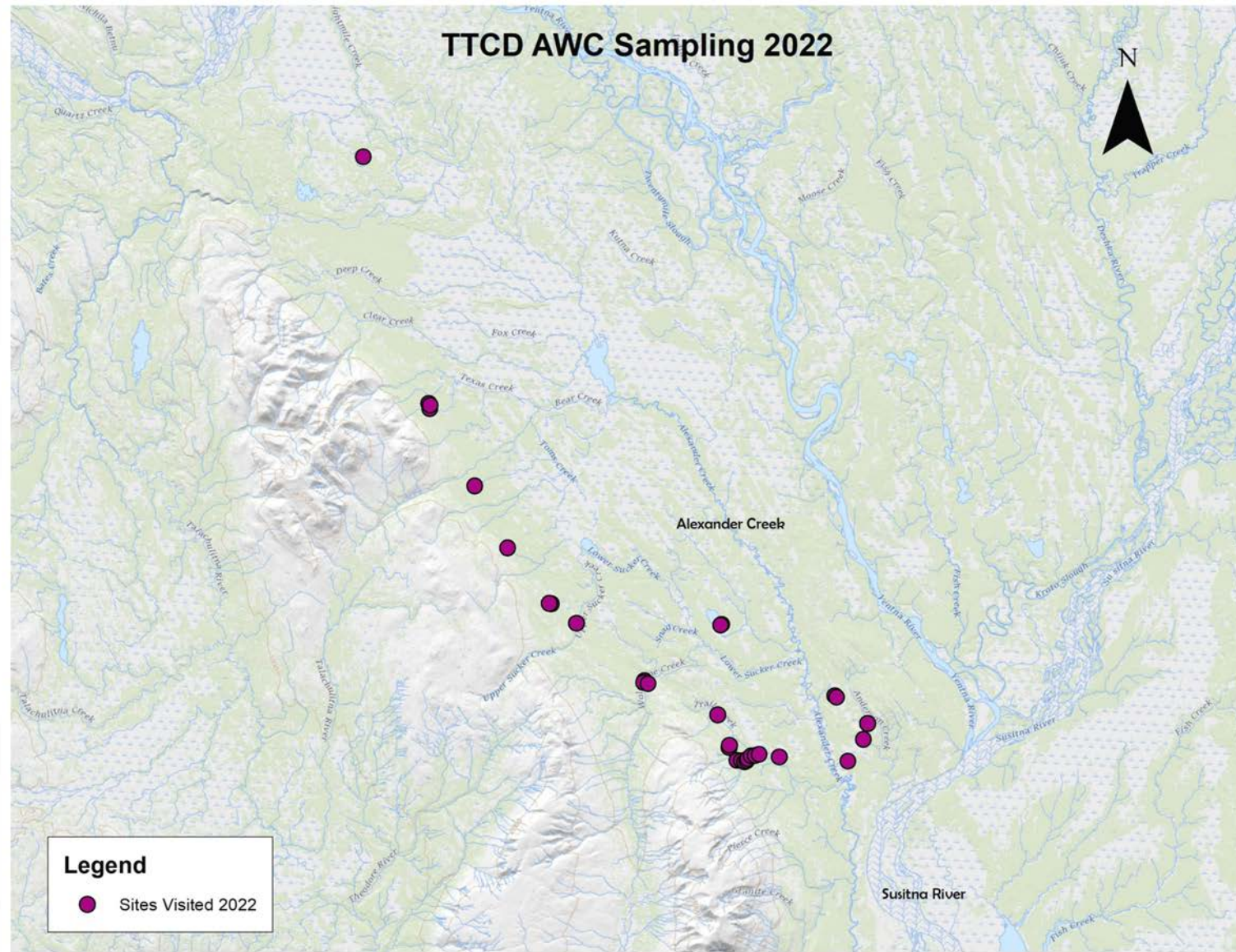


AWC x Elodea

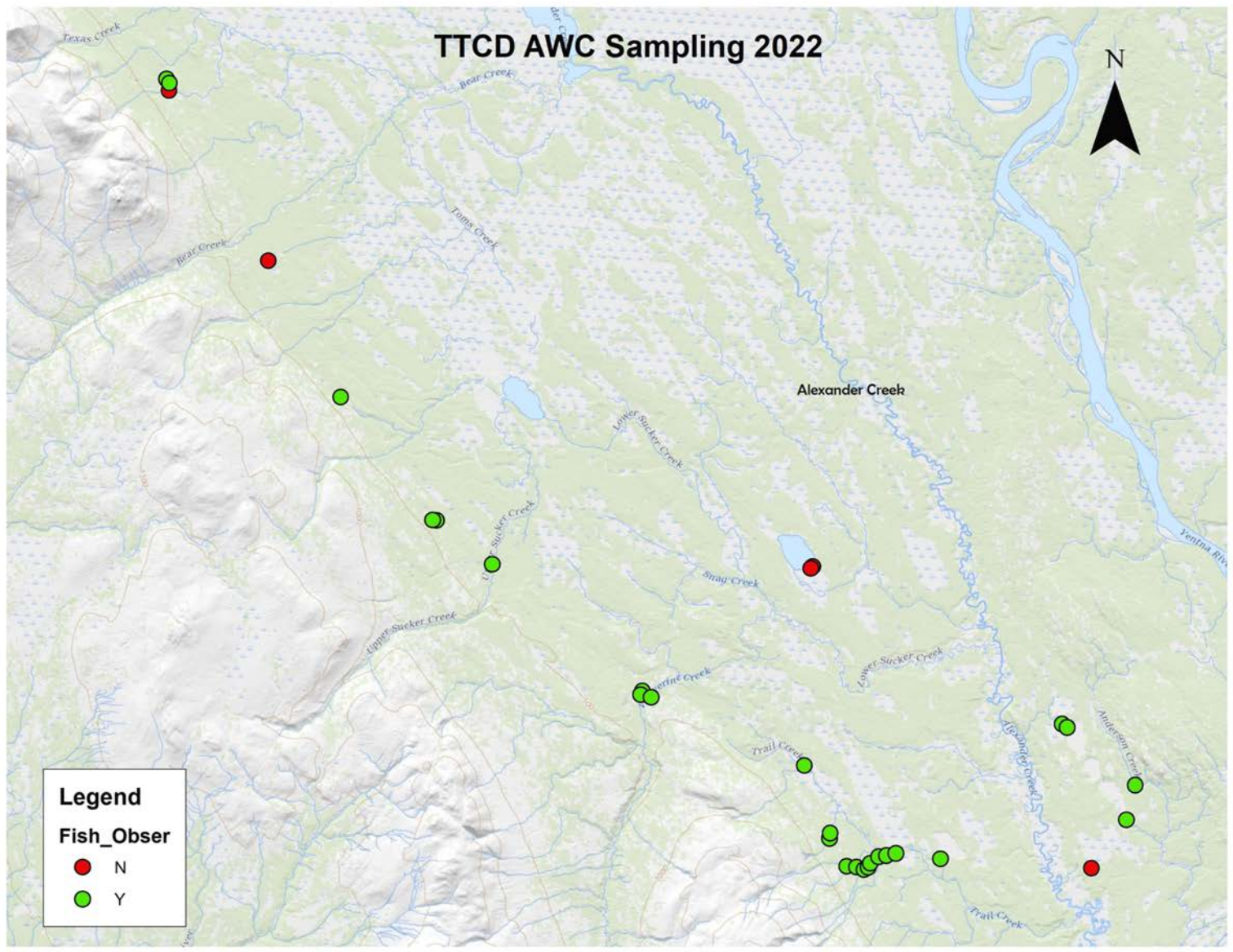
- Five lakes and/or outlet streams were surveyed for anadromous fishes



TTCD AWC Sampling 2022



TTCD AWC Sampling 2022



Legend

Fish_Obser

- Red dot: N
- Green dot: Y

Species Observed 2022

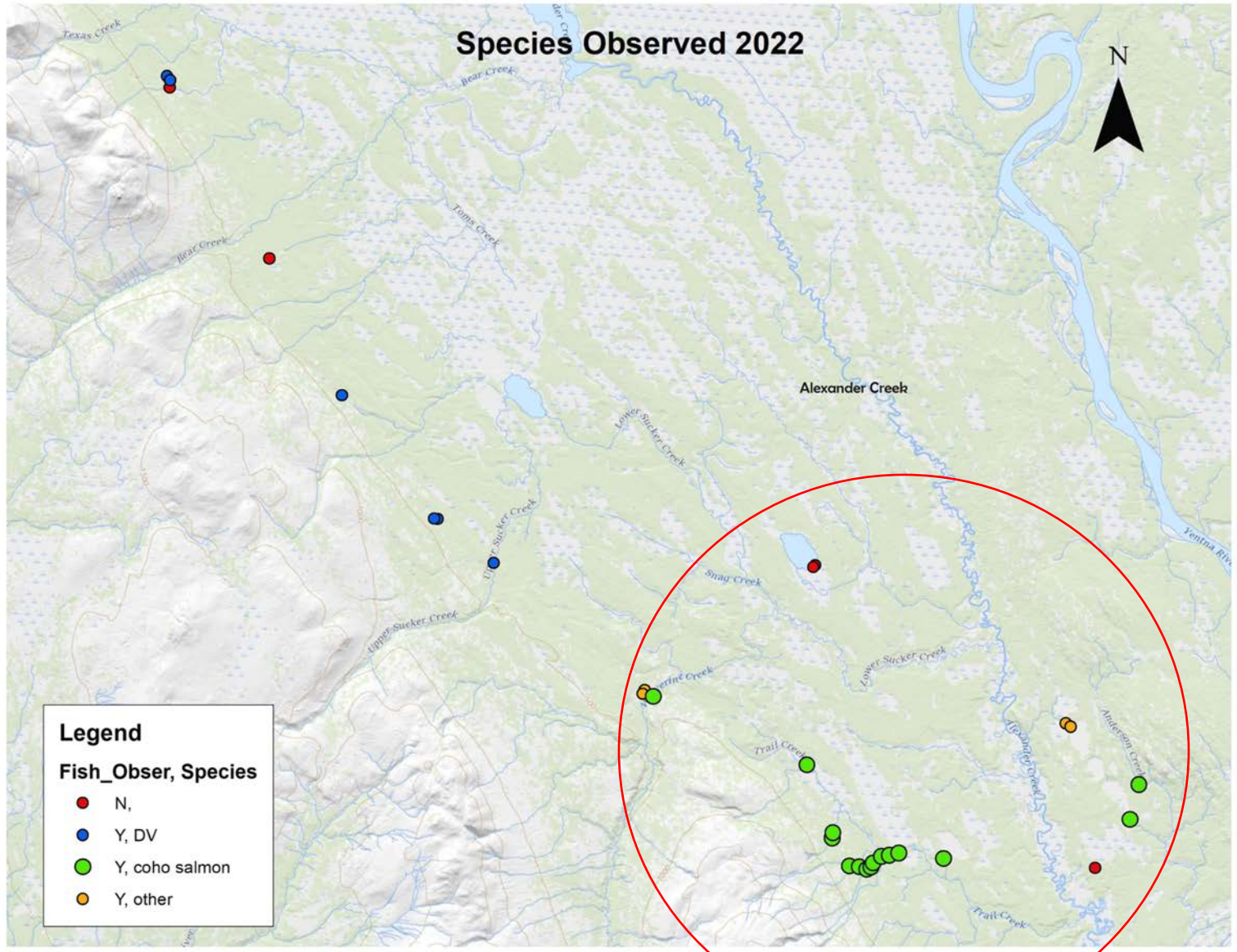
N



Legend

Fish_Obser, Species

- N,
- Y, DV
- Y, coho salmon
- Y, other





Trail Creek

A narrow stream flows through a dense forest. The water is dark and reflects the surrounding greenery. The banks are covered in lush vegetation, including ferns and tall grasses. In the foreground, a fishing net with a green frame and a white mesh is partially submerged in the water. The net is attached to a silver pole. The overall scene is a peaceful, natural setting.

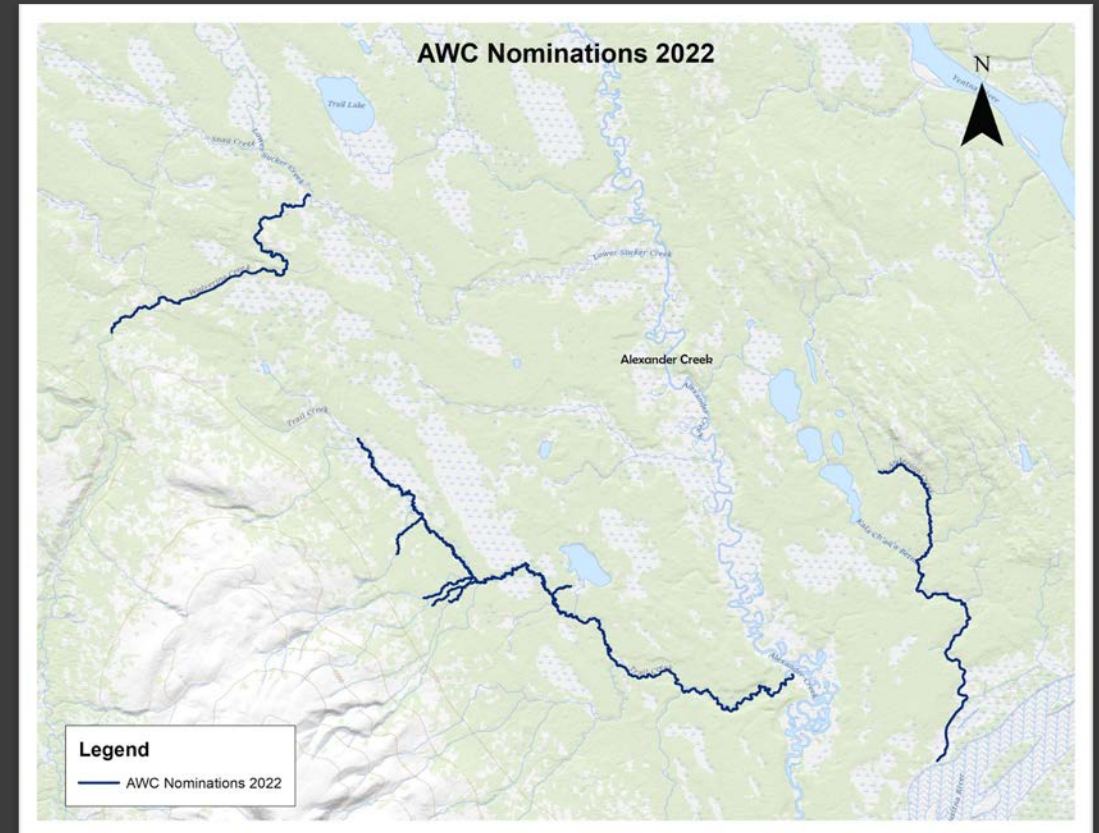
Trail Creek Tributary

Derf Lake outlet



AWC Nominations

- 8 total nominations in this region.
- Added 23 miles



Conclusions

- There is an **abundance** of region
- It is likely there are still many streams not yet listed in the



Future Plans

- AWC Surveys
 - Additional surveys within this region
 - Work to survey all areas that were inaccessible in 2022 due to water levels
- Expand to area NW of Alexander Lake (AWC & Elodea surveys)



Thank you

Mat Su Basin Salmon Habitat Partnership

ADFG Alaska Freshwater Fish Inventory

Alpine Air

Trail Ridge Air





Questions?