

Mat-Su Basin Salmon Habitat Partnership

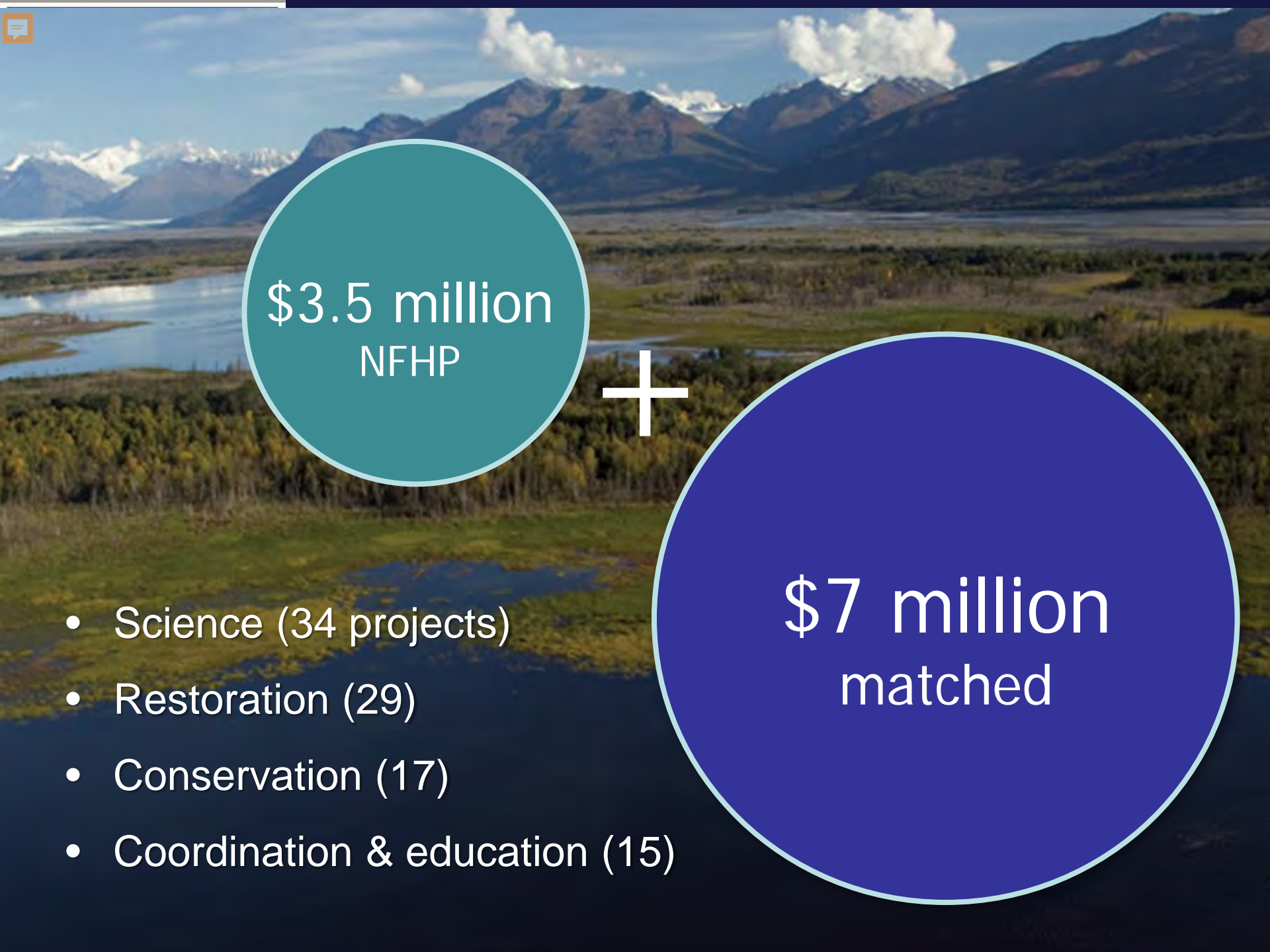


Jessica Speed, Mat-Su Basin Salmon Habitat Partnership

November 13, 2019 ~ Mat-Su Salmon Symposium, Palmer, Alaska

**Mat-Su
salmon**
PARTNERSHIP





\$3.5 million
NFHP

+

\$7 million
matched

- Science (34 projects)
- Restoration (29)
- Conservation (17)
- Coordination & education (15)

Science and Conservation:
Stream temperature, flow and fish research are
improving our ability to answer complex questions




Coordination and Education:
Summer site tours are an important vehicle for information sharing and building connections – with each other, and the land.





**Restoration:
The Elodea task force models a way the
Partnership can address timely issues**



Coordination: Addendum to the 2013 Strategic Action Plan

What's new?

1. Updated conservation strategies
2. A new section identifying organizational priorities

Conserving Salmon Habitat in the Mat-Su Basin:
Organizational Focus
and Updated Conservation Strategies
of the
Mat-Su Basin Salmon Habitat Partnership

*Addendum to the 2013 Partnership Strategic Action Plan
June, 2019*

Looking Forward



Thank you!



jspeed@tnc.org
865-5713

www.matsusalmon.org