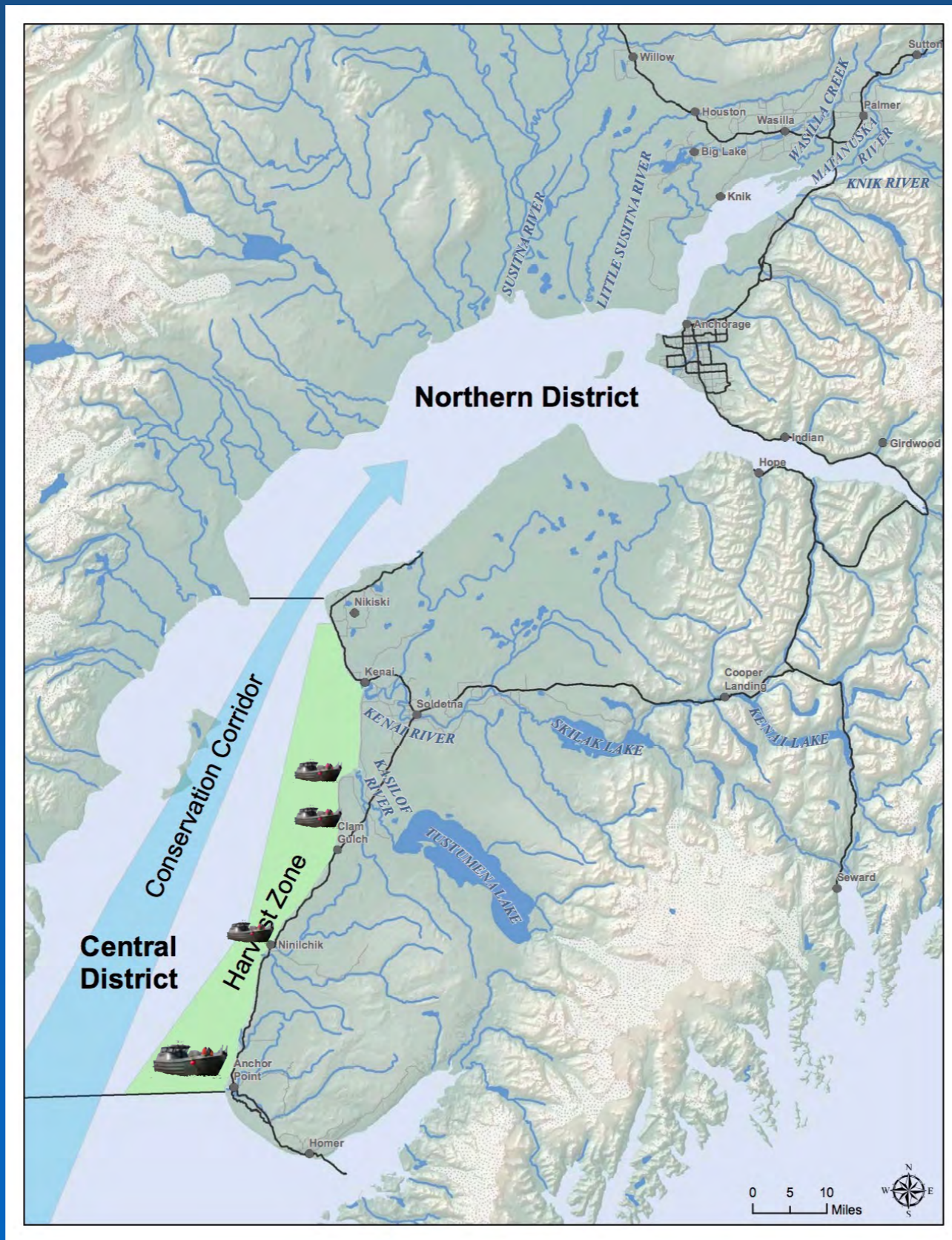


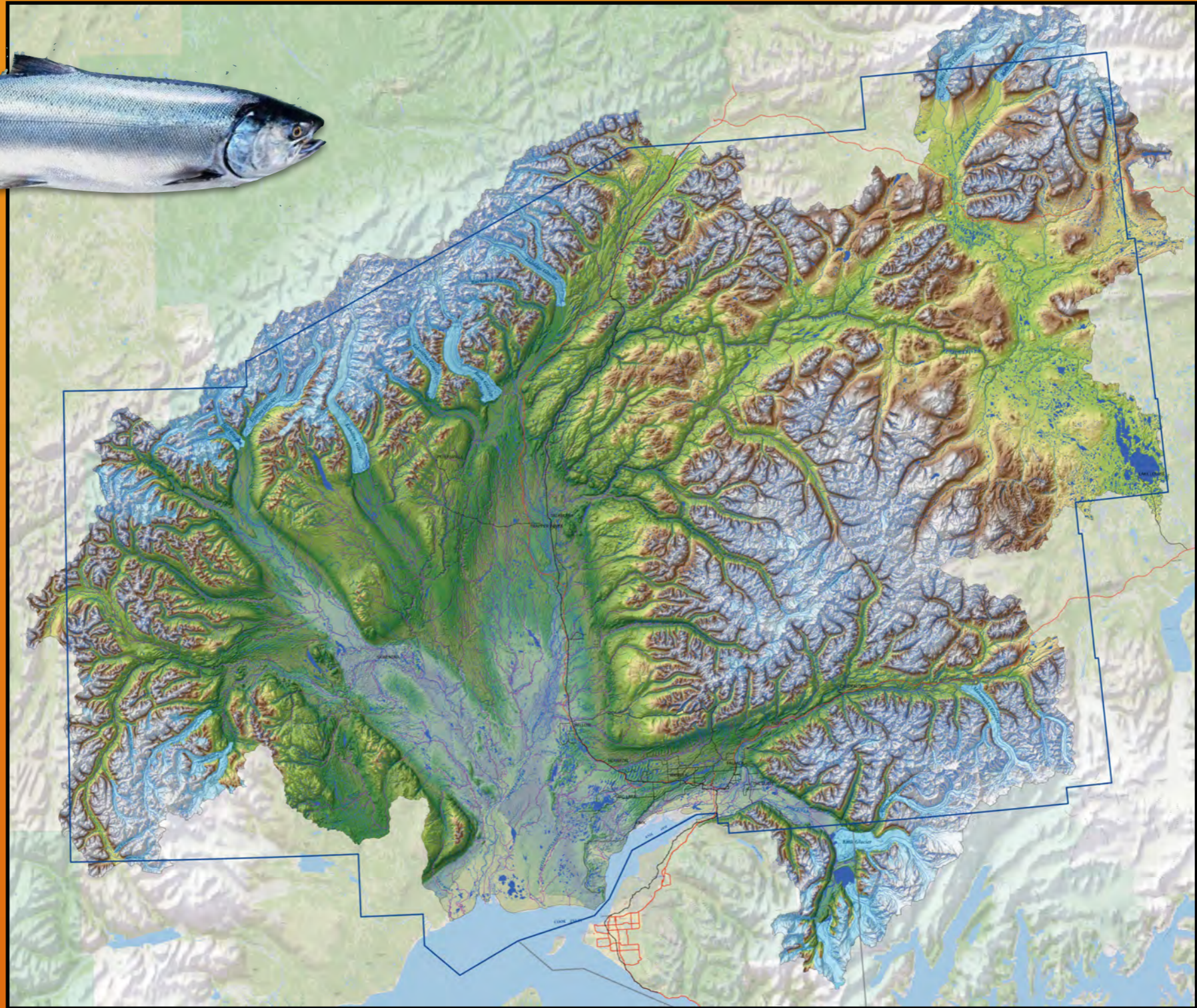
Mat-Su Sport Fishing Economics



Upper Cook Inlet



Mat-Su Sport Fishing Area



Mat-Su Area Economic Studies

2007

ADF&G/Southwick

Upper Cook Inlet Sport Fisheries

MSB/ISER

(Mat-Su economics)

2017

MSB/ADF&G/Southwick

Upper Cook Inlet Sport Fisheries

(Mat-Su economics)

Economic Contributions of Sportfishing on the Cook Inlet Region



SOUTHWICK
ASSOCIATES

PO Box 6435 ■ Fernandina Beach, FL 32035 ■ Office (904) 277-9765

Angler Days

2007 to 2017 dropped 47%



From 296,000 to 155,400

Mat-Su Spending

2007

\$141 million spent by sport anglers

2017

\$ 57 million



**We need to restore the
Mat-Su economic driver**

Economic Contributions

Jobs

*Only 474 employed in 2017
from 1,180 employed in 2007*

Income

*\$14.3 million in 2017
\$75.8 million in 2007*

Local taxes

*\$5.9 million in 2017
\$9.2 million in 2007*





Locals and Visitors value King Salmon fishing

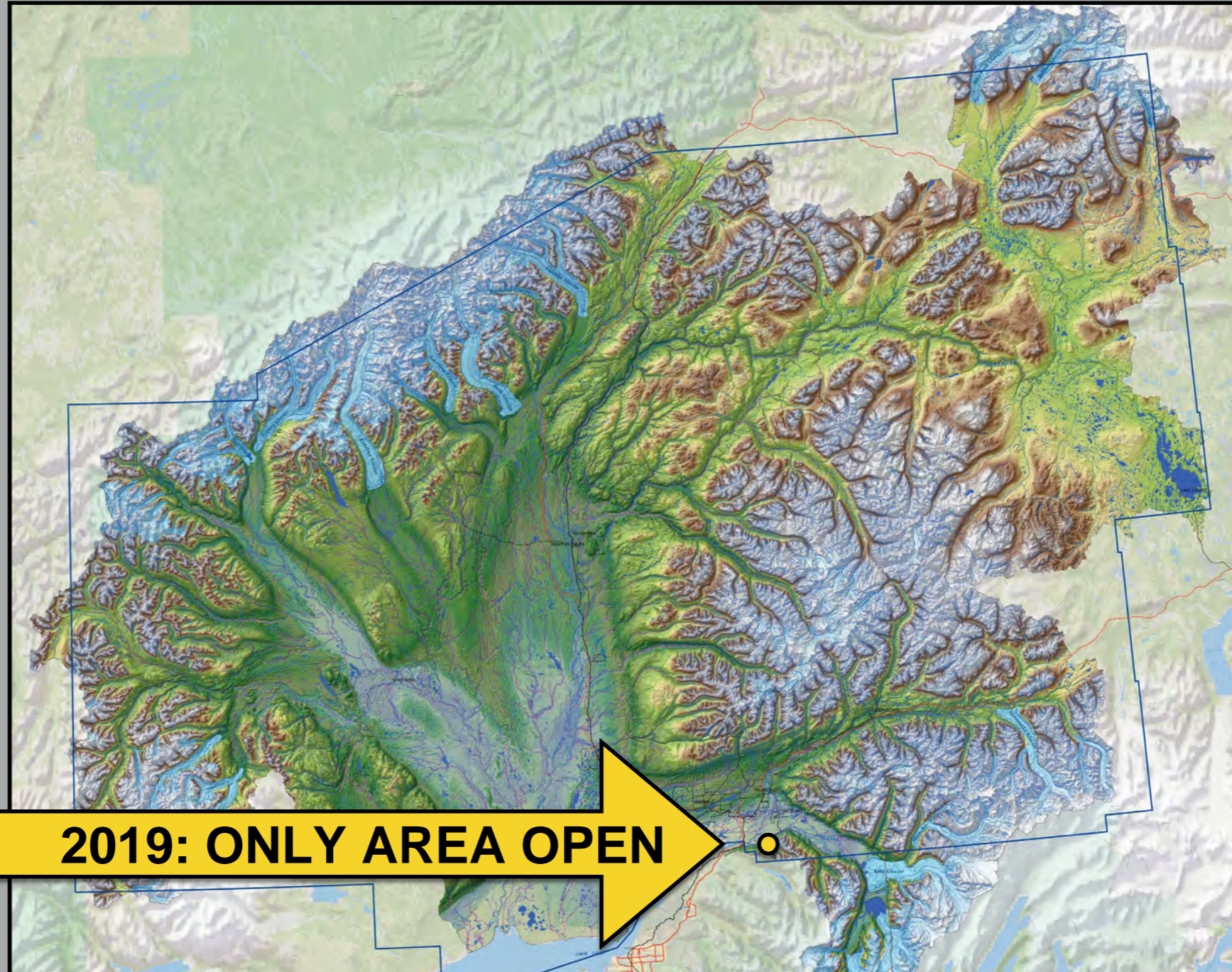
- Lodging—Multi-day
- Air Charters
- Boat Charters
- Fish Processing

Much more than rainbow trout and grayling



2018 and 2019

Most Restrictive King Salmon Regs Since 1970s



2019: ONLY AREA OPEN

2018 seven emergency restrictions/closures

Inriver Escapement

It takes fish to make fish



It takes additional fish to support sport/personal use fisheries



Improving King Salmon Management

Proposal 199

Amend Northern District King Salmon Management Plan



Proposal 215

Susitna and Yentna Rivers King Salmon Fishery Management Plan

- **Consistency**
- **Resource Protection**
- **Flexibility**

Proposal 217

Deshka River King Salmon Fishery Management Plan

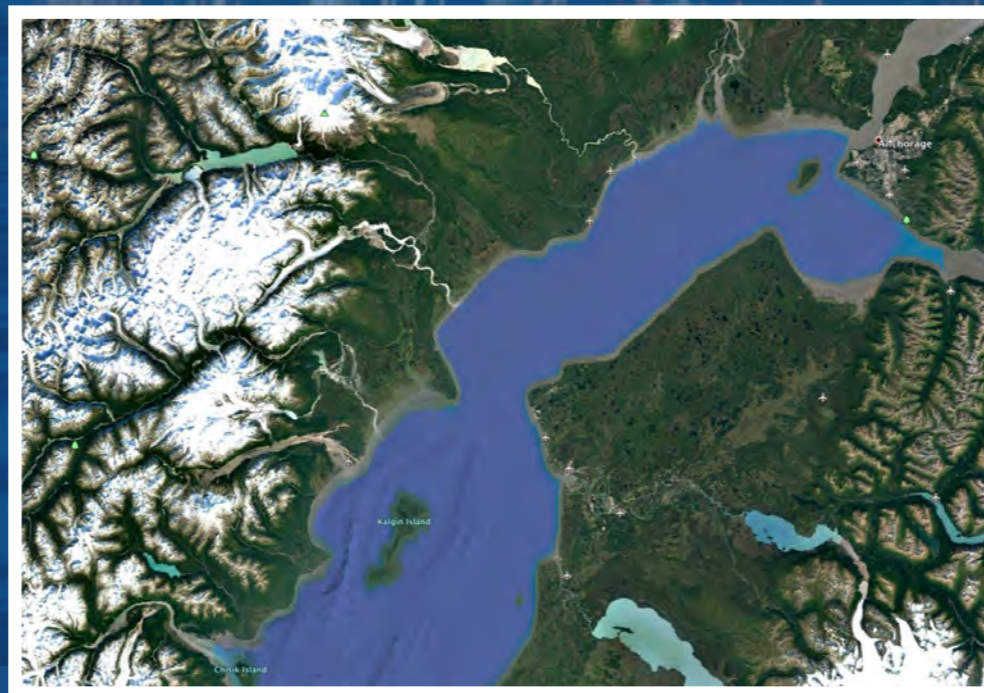
Proposal 219

Little Susitna River King Salmon Fishery Management Plan

February 7-19, 2020

2020 Board of Fisheries Meetings

Upper Cook Inlet Finfish





King and Silver Salmon are the economic drivers of Mat-Su sport fisheries