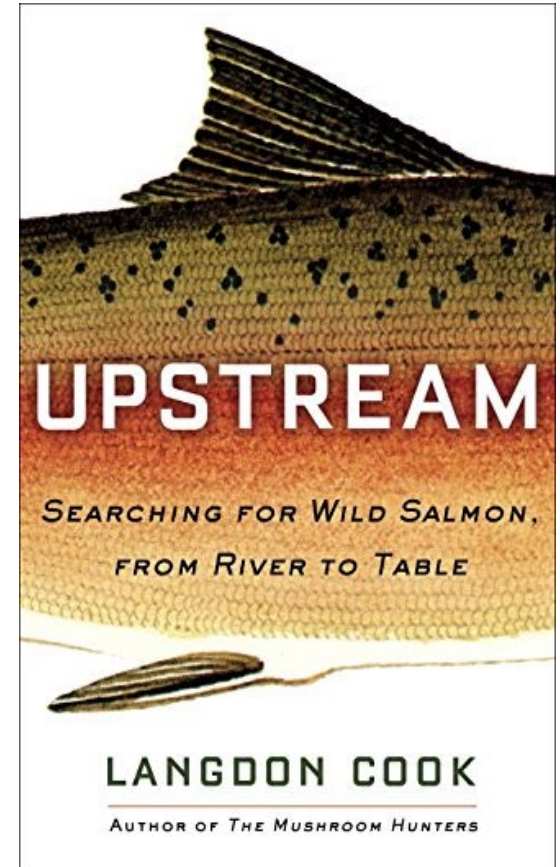
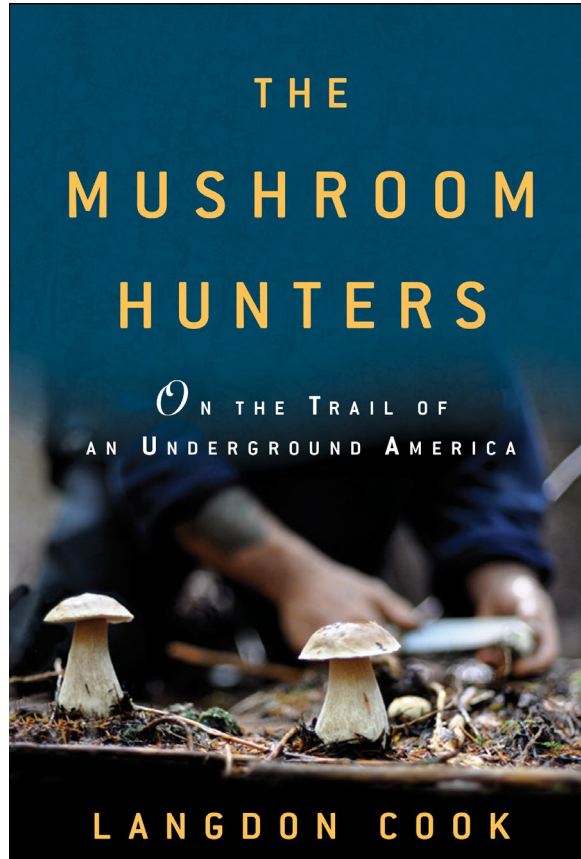
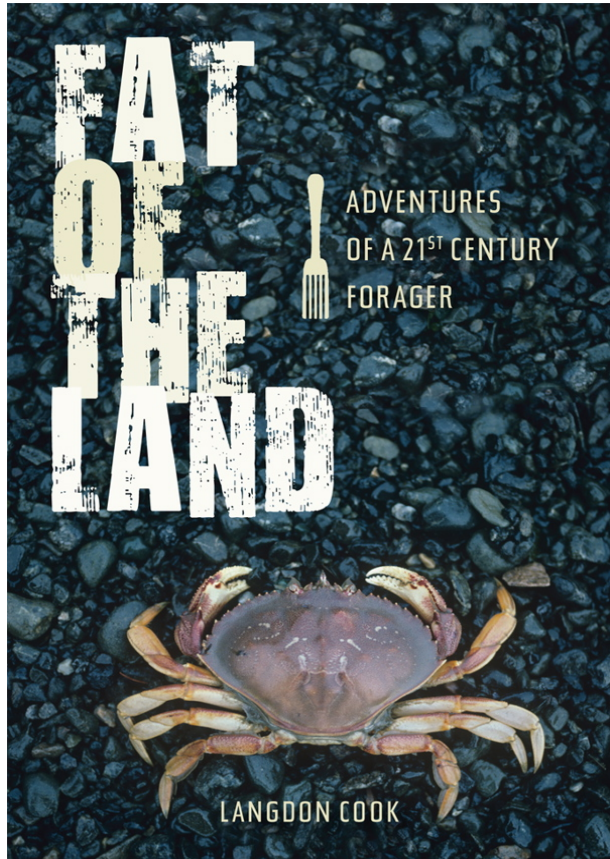


**Living on the
Wild Side:
Sustaining Our
Age-old Bond
with Pacific
Salmon**



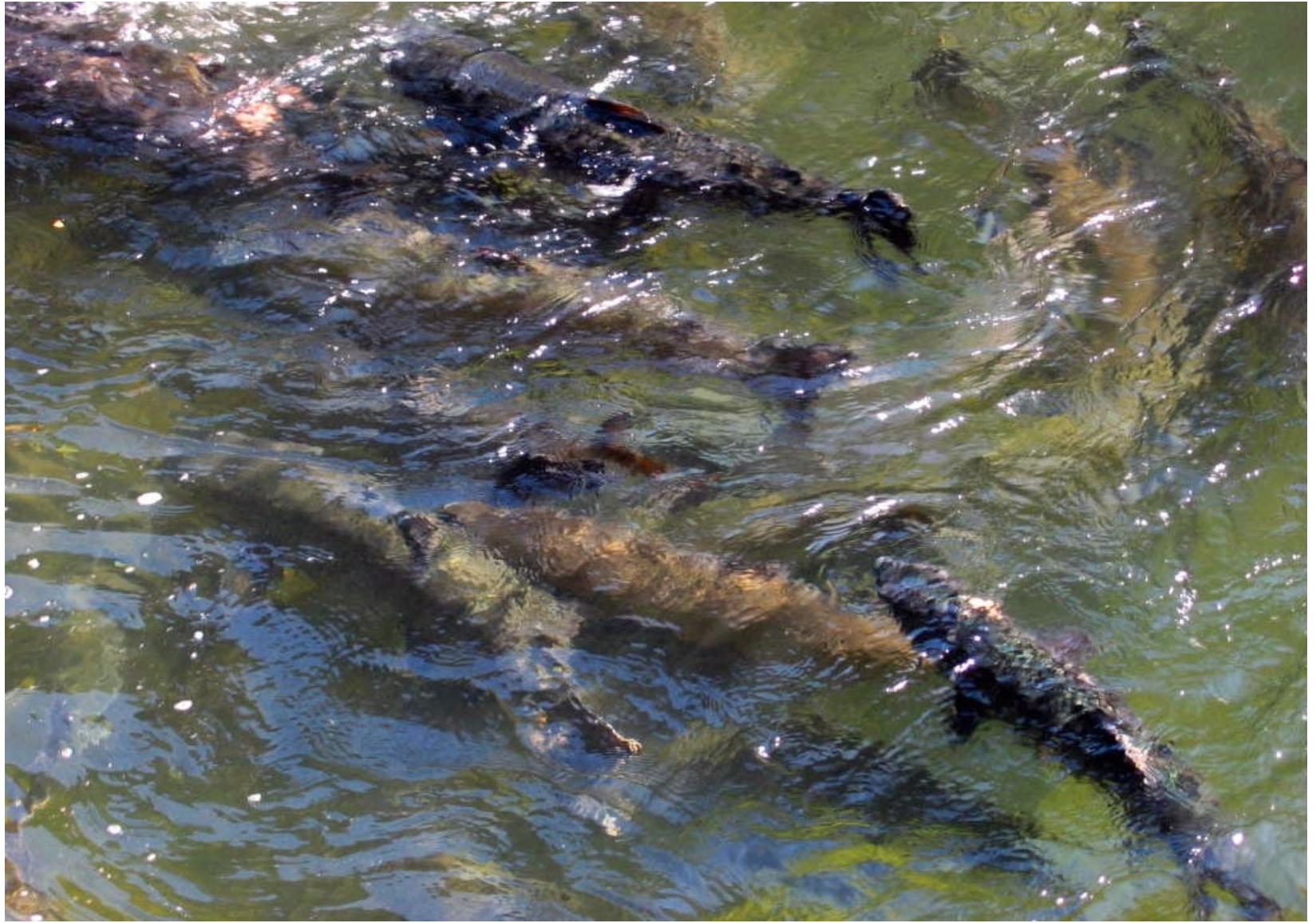
An aerial photograph of the Connecticut River winding through a valley. The river is a deep blue, curving from the upper right towards the lower left. The banks are lined with trees in vibrant autumn colors of yellow, orange, and red. The surrounding landscape includes green fields, some brown plowed earth, and small clusters of buildings. In the far distance, a range of blue mountains stretches across the horizon under a clear sky.

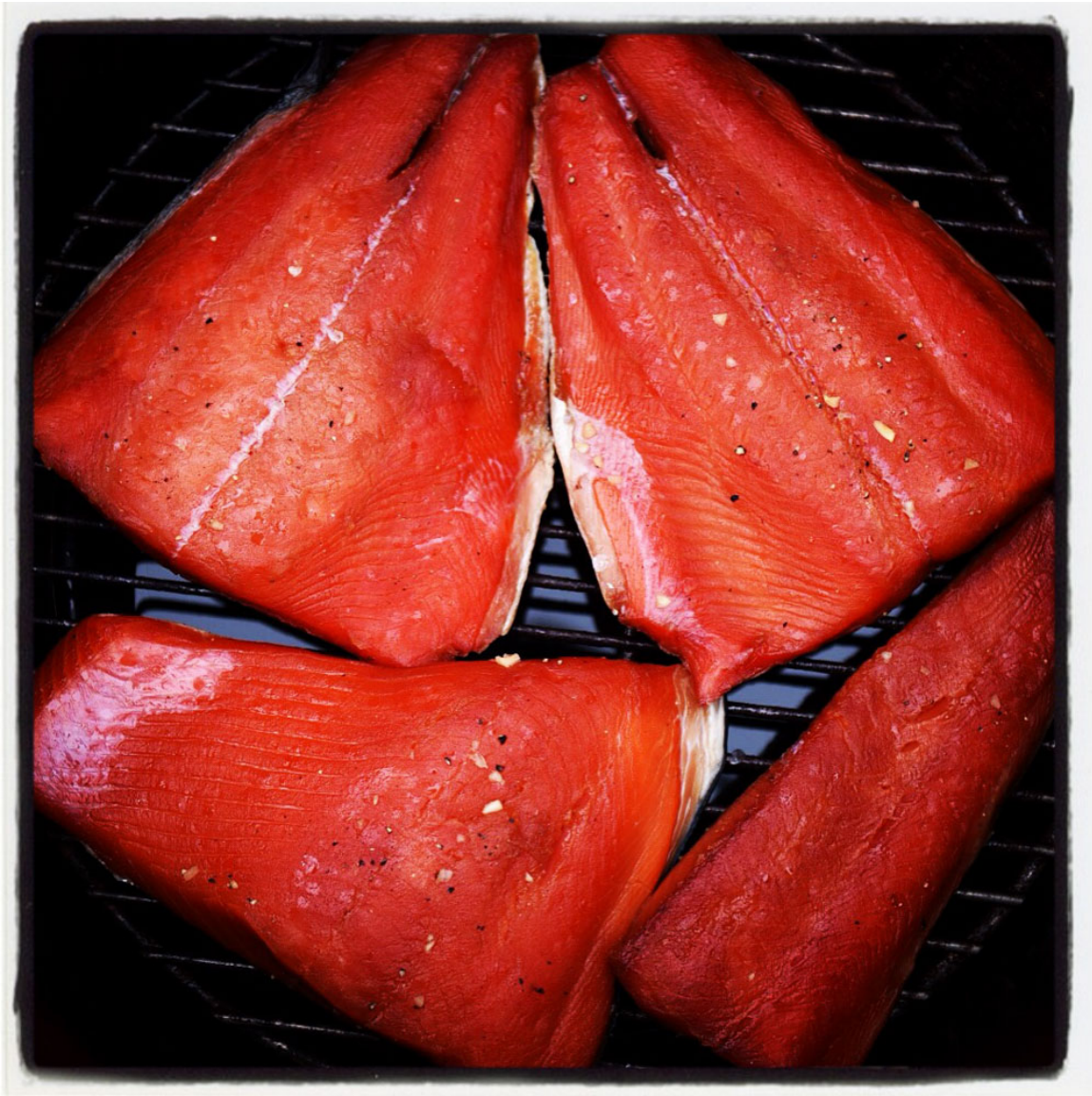
Connecticut River

Photo: John Burk



Rogue River Canyon
SW Oregon













Pike Place Market
Seattle, Washington



Photo: Ted Warren, AP



WE PACK
SO YOU CAN
TAKE SEAFOOD
HOME!
24 HOUR PACK
\$5.00
48 HOUR PACK
\$10.00

WE SELL ONLY
WILD SALMON
CAUGHT BY
WILD FISHERMEN!

FIRST OF THE
SEASON
COPPER-
RIVER
KING
SALMON
\$37.99
lb.

FRESH
WHOLE
LING
COD
\$7.99
lb.

FRESH
WILD
ALASKAN
TROLL-CAUGHT
KING
SALMON
\$17.99
lb.

FIRST OF THE SEASON
COPPER-RIVER
SUCKEYE

WE ZIP UP
HOODS
\$50.00

Kevin Davis, chef/owner, Blueacre Seafood
Seattle, WA





Columbia River Gorge
Drano Lake, WA



“The River People”
Columbia River treaty tribal members



Klickitat River dipnetting
Lyle, Washington

“Since time was new, salmon has been a part of our life, and today the salmon is still part of our life.” – Umatilla elder

Bonneville Dam
Cascade Locks, OR









“You need to start with this fundamental
premise: Nature is perfect.”

– *Casson Trenor, sustainable fisheries activist*



Redfish Lake
Sawtooth National Recreation Area
Stanley, ID



Lonesome Larry's spawning bed
Eagle, ID



Salmon River
Sawtooth National Forest, ID







Salmon River mouth, Oregon Coast



“The question for all of us is what do we want this place to look like in the future.”
– Guido Rahr

Photo: Francis Eatherington



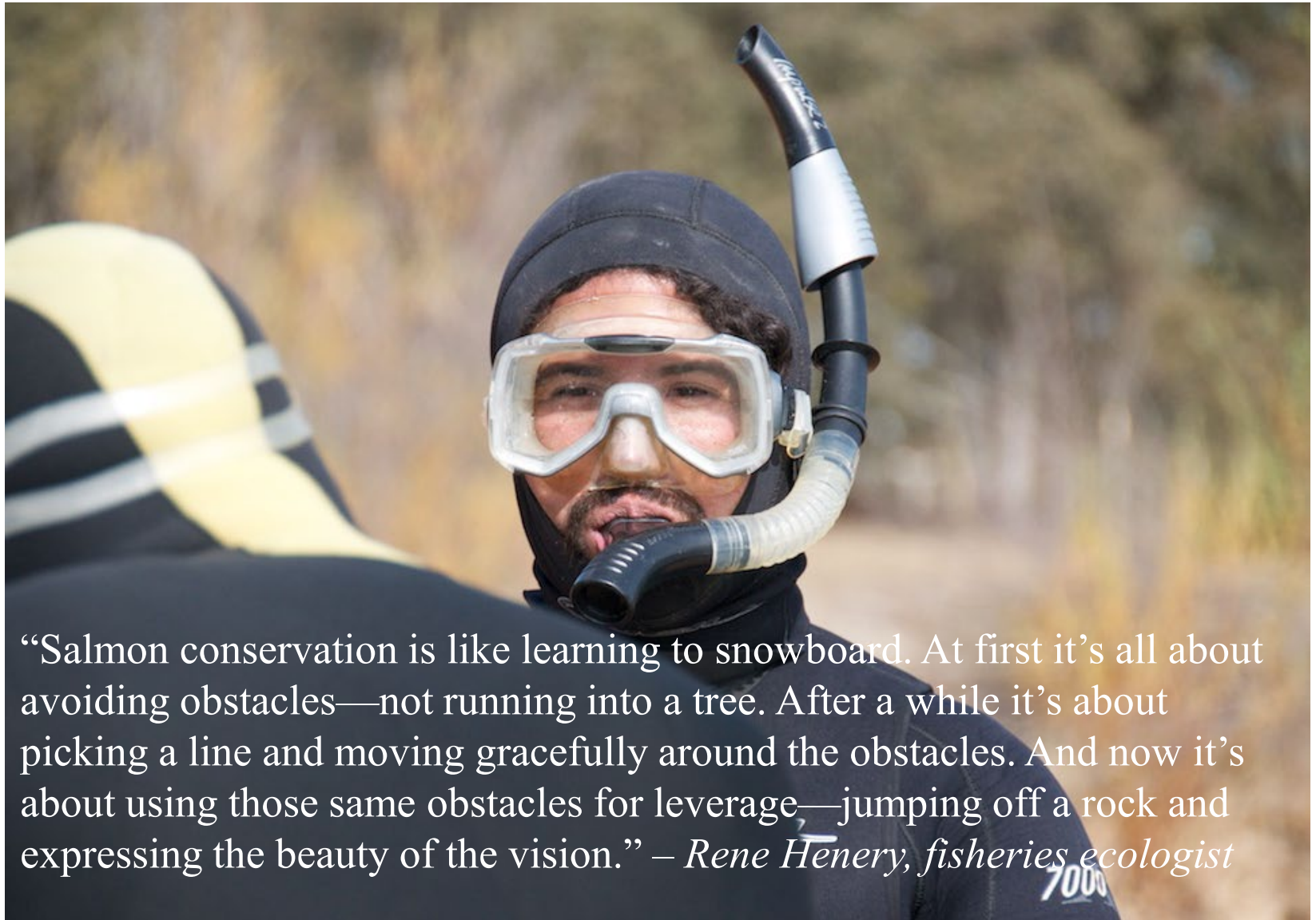
Guido Rahr, president,
Wild Salmon Center



Lincoln Park, West Seattle

Duwamish River
Seattle





“Salmon conservation is like learning to snowboard. At first it’s all about avoiding obstacles—not running into a tree. After a while it’s about picking a line and moving gracefully around the obstacles. And now it’s about using those same obstacles for leverage—jumping off a rock and expressing the beauty of the vision.” – *Rene Henery, fisheries ecologist*



Yuba River
Timbuctoo, California

“We make decisions about what should happen and then try to force the landscape to match our desired outcomes.” – *Rene Henery*



Arroyo Canal
Merced, California



Central Valley
Fresno, California



Rene Henery,
Trout Unlimited

Jacob Katz,
California Trout

Rice paddies
Knaggs Ranch
Woodland, California



Reconciliation: “It’s not fish versus farms. These solutions we’re putting forth save the state billions of dollars. You don’t start to see that until you see the price of mismanagement.” – *Jacob Katz, fisheries biologist*







ROBBINS RICE



BLACK FOX[®]

BRAND

WARIMASHI

Semi-Brown Rice



"Floodplain Fatties"[™]

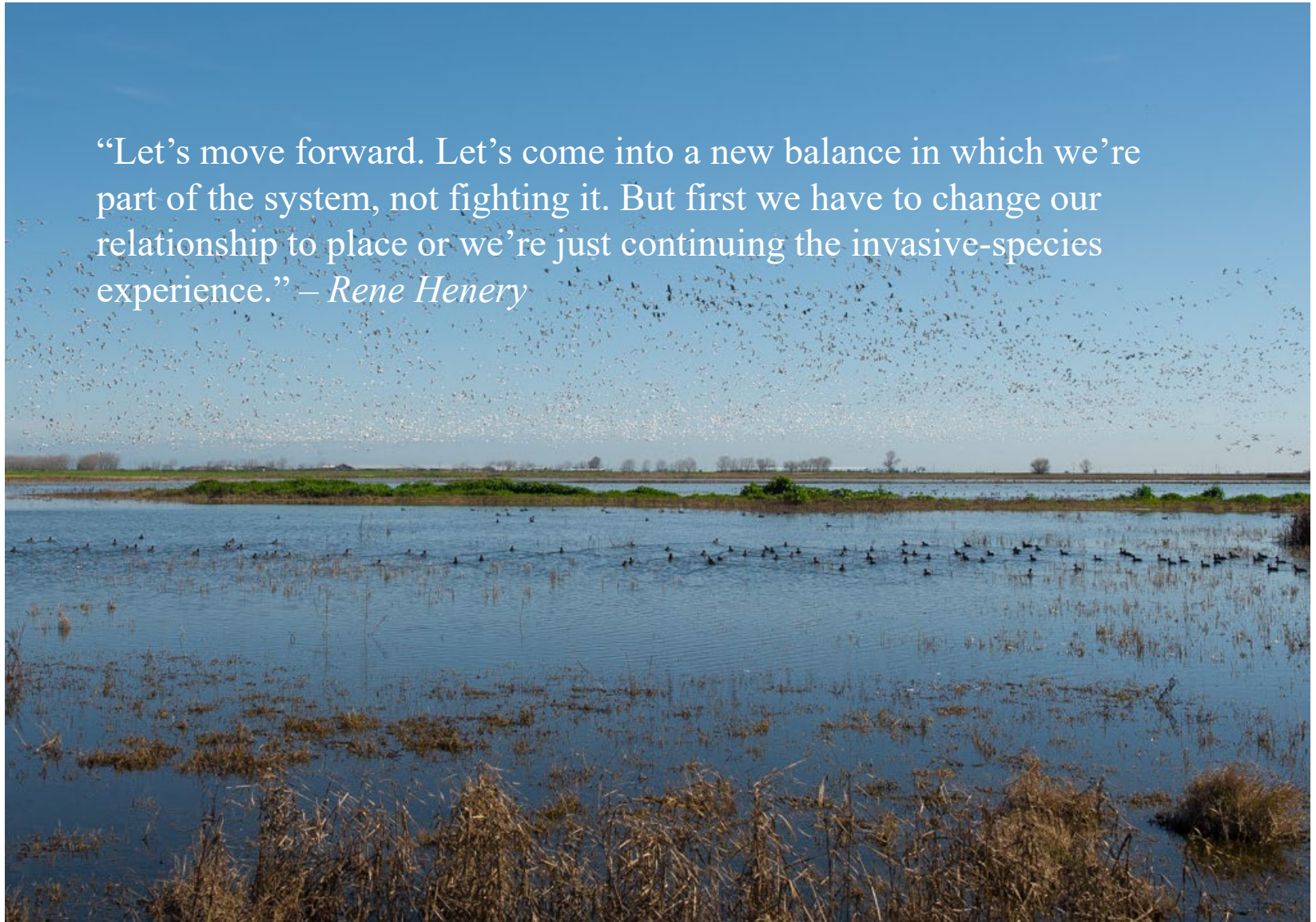
"World's First Salmon Friendly Rice"

Nigiri is a form of sushi with a slice of fish atop a wedge of rice. The "Nigiri Project" is a collaborative effort between farmers and researchers to restore salmon populations by reintroducing young salmon onto winter-flooded rice fields. These "surrogate wetlands" mimic the floodplain habitat formerly used by young salmon, which has been largely eliminated by the development of the Central Valley. For more info visit us at CalTrout.org

THE NIGIRI PROJECT



“Let’s move forward. Let’s come into a new balance in which we’re part of the system, not fighting it. But first we have to change our relationship to place or we’re just continuing the invasive-species experience.” – *Rene Henery*





DANGER THAT OFF!
NO AUTHORIZED BY ONLY
NO SWIMMING, DIVING OR
TOWING OR FROM OF
HEAT THIS STRUCTURE

NO MORE THAN 2
COAST GUARD
APPROVED 6 GALLON
GAS CANS ALLOWED

NO TRESPASSING
BEYOND THIS
POINT
WHEN GATE
IS DOWN

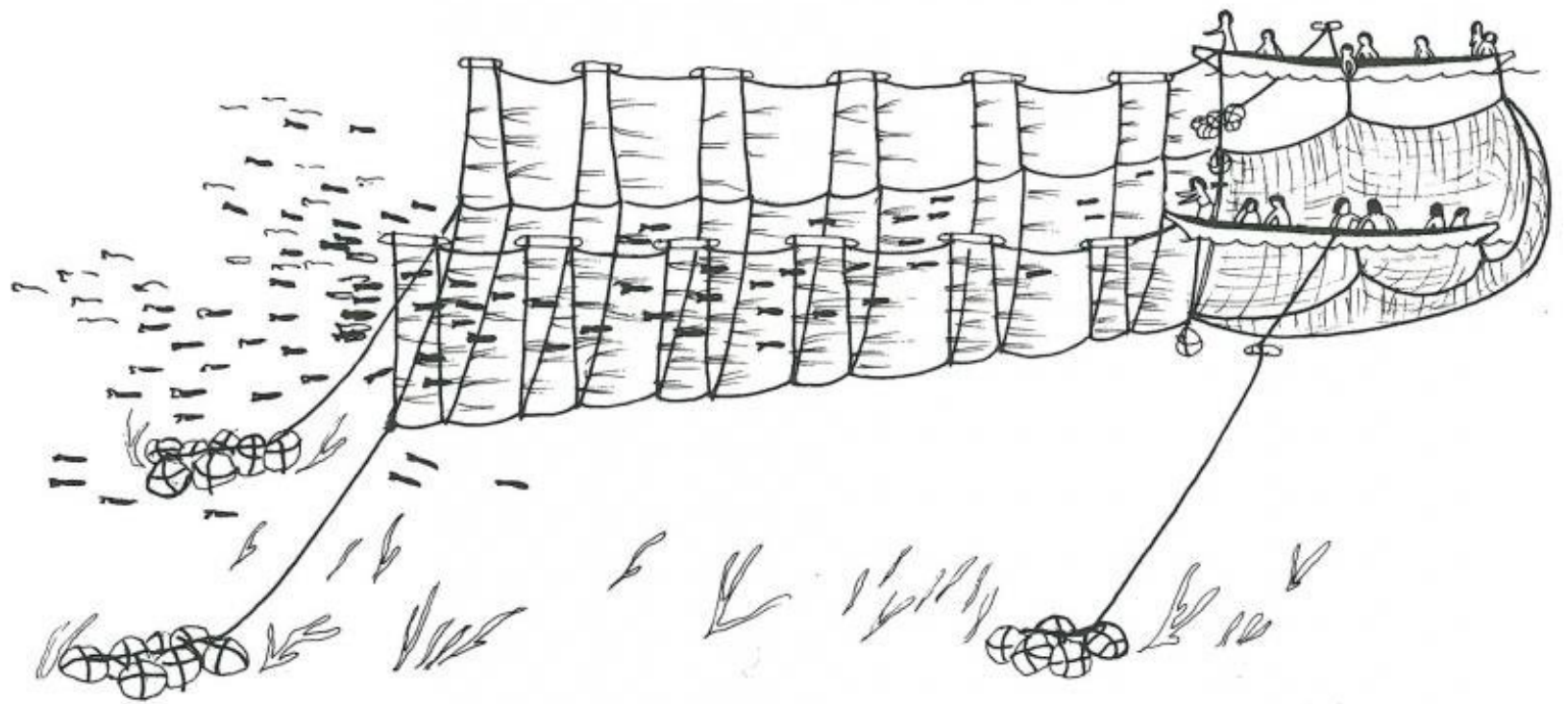
WALK ON
PASSENGERS
LOAD FIRST

BICYCLES
LOAD AFTER
VEHICLES

A close-up photograph of Riley Starks, a man with a white beard and glasses, wearing a dark grey button-down shirt. He is holding a large, smooth, greyish-brown rock with both hands, examining it intently. The background is a clear, bright blue sky. The text is overlaid on the left side of the image.

Riley Starks, reefnetter
Lummi Island Wild

“My rule is, stop complaining and start doing something. Stand up and throw yourself in front of the tanks.”




























(Former) Lake Mills
Elwha River
Port Angeles, WA

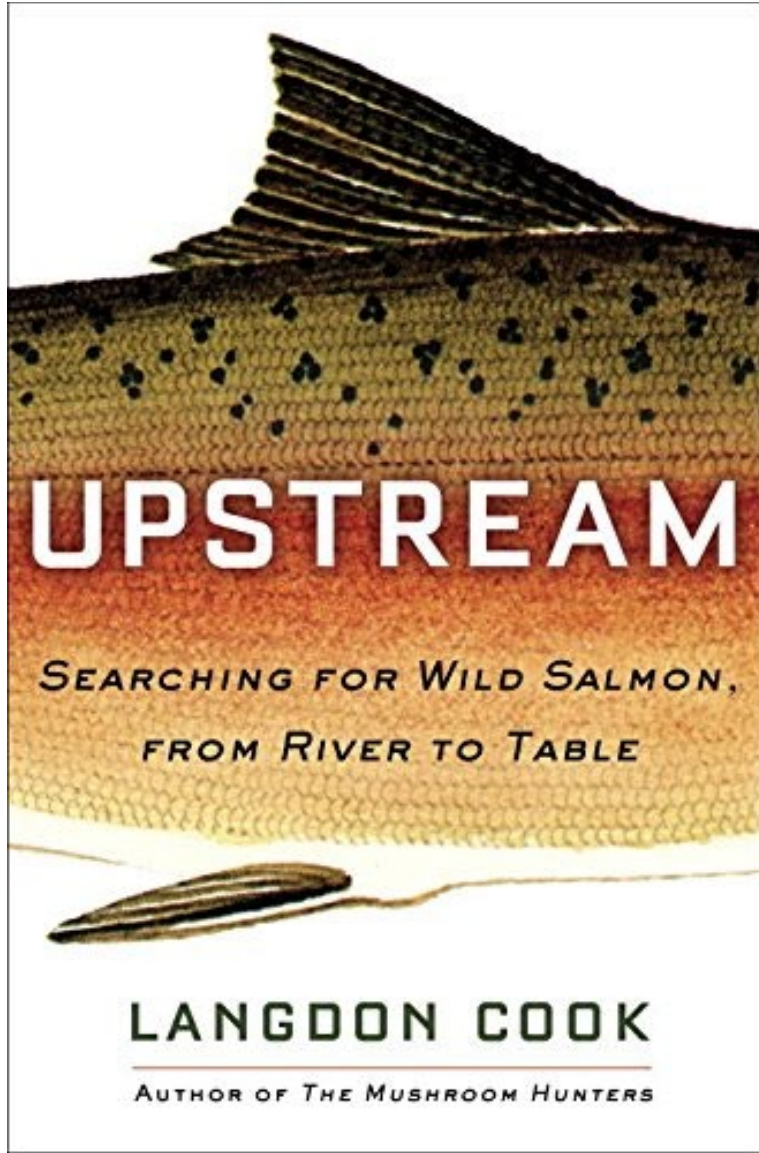


In May of 2012, after nearly a century without anadromous fish, a 35-inch male steelhead was observed upstream of the former Elwha Dam site ...



*Great Brown Bear is walking with us,
Salmon swimming upstream with us,
as we stroll a city street.*

— Gary Snyder,
The Practice of the Wild



UPSTREAM

*SEARCHING FOR WILD SALMON,
FROM RIVER TO TABLE*

LANGDON COOK

AUTHOR OF THE MUSHROOM HUNTERS