



Mat-Su Trails and Park Foundation

Building a World-Class Park and Trail System for the Mat-Su Borough

World-Class | Wild | Accessible



The Mat-Su Trails and Parks Foundation takes users to the wild side of the Mat-Su Valley by funding the development of incredible trails for users of all kinds. We are helping to create opportunities that promote healthy, happy, active lives.



Mission

To be the resource, inspiration,
and catalyst for trail and park
development in the
Mat-Su Borough





What We Do

Grant Making

- Trail development (motorized and non, summer and winter)
- Planning for Trails and Parks
- Land Acquisitions
- Equipment for Trail Maintenance and Development
- Education and Training Related to Sustainable Trail Development

A photograph of two cyclists in a grassy field. The cyclist in the foreground is wearing a white jersey with 'Palmer, Alaska' and 'BikePalmer' written on it, a white helmet, and sunglasses. The cyclist in the background is wearing a black jersey and a black helmet. A dog is visible in the middle ground. The image is partially obscured by a dark circular overlay on the right side.

Who We Fund?

- Non-profit Organizations
- Federally Recognized Tribes
- Government Entities

Types of Grants Awarded Since 2013





Snowbird Hut in Hatcher Pass

American Alpine Club of Alaska

- Purchase materials for a new roof and transport to get the materials to the hut



OPPORTUNITY



Settlers Bay Coastal Park

Great Land Trust

- Land Acquisition funds to purchase 300 acres of land adjacent to Palmer Hay Flats State Game Refuge, three salmon streams, and the potential for miles and miles of trails
- Park Planning
- Park Development* largest grant awarded \$100,000

Wild



Kesugi Ridge Latrines

Alaska State Parks

- Construction materials to build a latrine along the Kesugi Ridge trail located at Jawbone and Ermine trails



ENGAGED



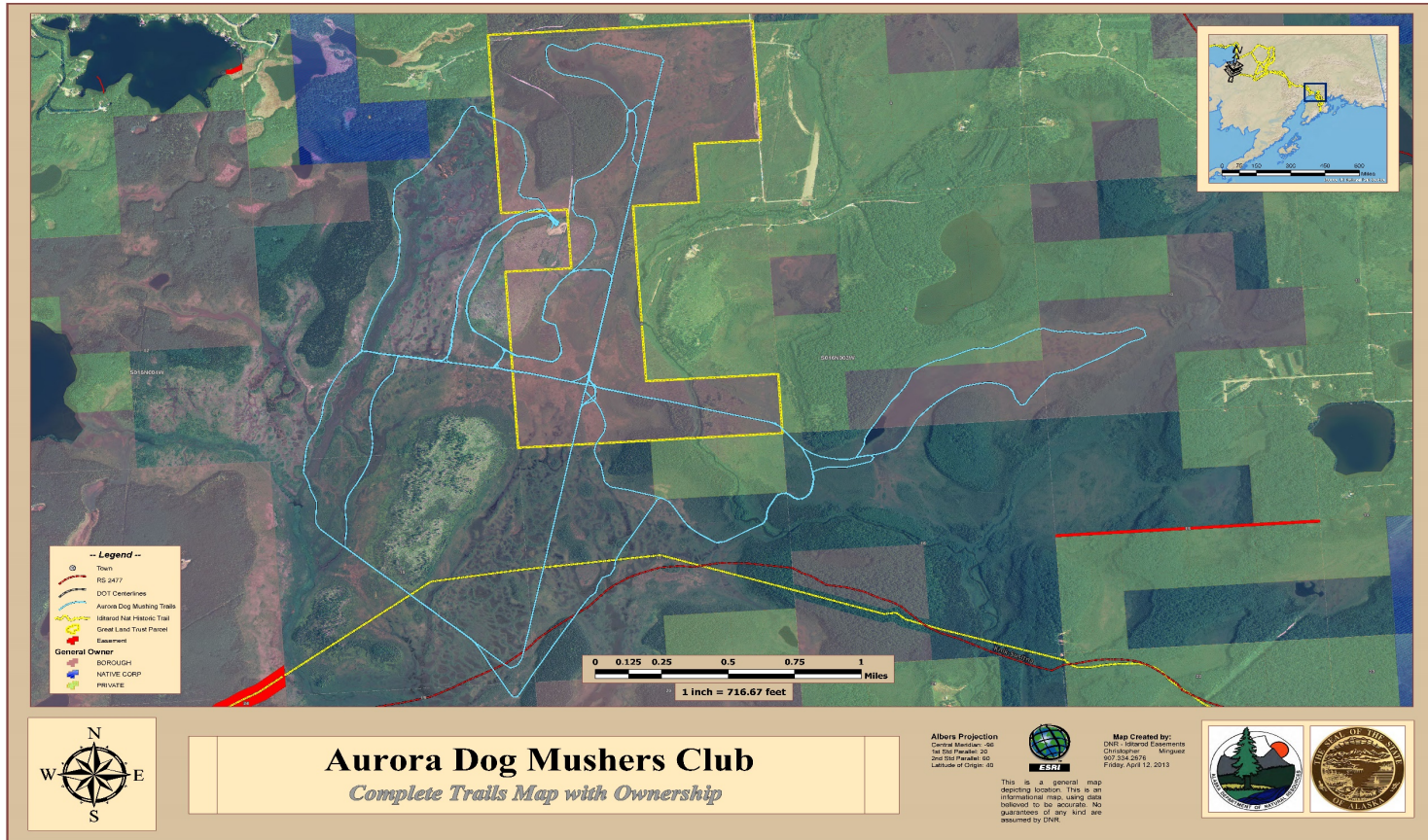
Wasilla Creek Boardwalk

Great Land Trust

- Materials to build elevated boardwalk trail along Wasilla creek in Palmer Hay Flats State Game Refuge



ACCESSIBLE



Aurora Dog Musher's Club

Aurora Dog Musher's Club

- 25 year ~ Trail easement acquisition from ADNR

MATSU TRAILS & PARKS FOUNDATION

SUPPORT



Purinton Creek Trail

Glacier View Community Council

- Trail Brushing
- Kiosks and Trail Maps
- Private Property / Stay on Trail Boundary Signs



WORLD-CLASS



Grow Palmer Edible Trail

Cement Planters and
planting supplies



Backcountry Horseman Carl Wagon Road trail

Supplies to build two bridges in the GPRA



Matanuska-Susitna Borough
Community Development and
Capital Projects Departments



Government Peak Recreation Area Proposed ADA Trails

Legend

- Proposed ADA Trails (0.8 mi)
- Proposed Overflow Parking and Mini-Amphitheater
- Ski Trails Under Construction
- Ski Trails
- Mountain Bike Singletrack
- Hiking
- Primitive Equestrian



0 60 120
Meters

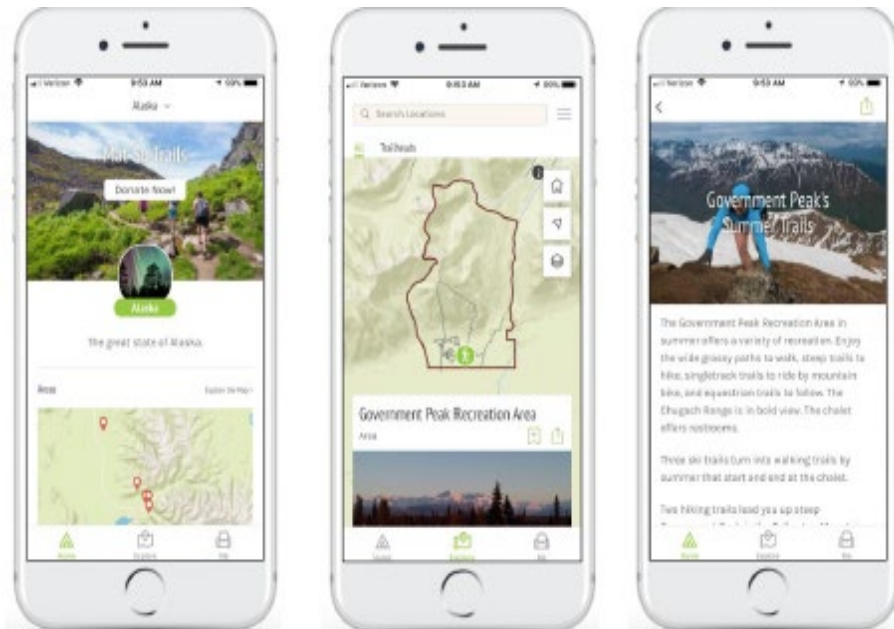
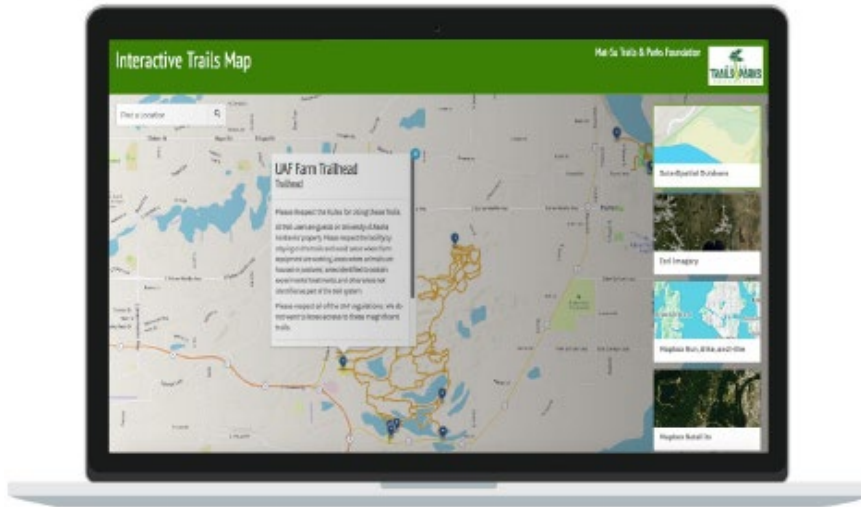
0 270 540
Feet

Date: November, 2017
Source: MBL/SJC, WBL/HRD, JBL/2012, NCS
Project: NAD 83, 48" ST, PUJ 24
Location: GPRRA
Author: MBL/ERND

Alaska Trails -2018

- Funding to design a $\frac{3}{4}$ mile 48" wide ADA trail at GPRRA (red line)





Our New Free Mobile Trail Map App!

- Search Outer Spatial in the app store
- 300 + miles of trail in the Mat-Su Borough Includes all summer and winter trails including: biking, skiing, hiking, ATV, snow machine, and mushing)

- New interactive map at our website!

www.matsutrails.org

Salmon & Trails

- We could provide funding to support training for sustainable trail building design and construction techniques
- We could provide funding to do a trail assessment to identify trail restoration measures
- We could provide funding to support a hardened crossing



How to apply for a grant?

- 1) Visit our website www.matsutrails.org to review our application requirements and if your project seems like a good fit, then...
- 2) Give us a call to discuss your project 907-746-8757





Over the next 10-years we intend to
invest over \$4million into the
development of trails and parks

In the Mat-Su Borough



Do you want to see a Mat-Su with
a world-class trail and park
system?

How you can help:

- Become a donor or corporate sponsor and help us leverage our existing resources
- Direct your clients to our website so they can become members
- Participate in our activities- daycation hikes and trail maintenance days
- Follow and promote us on facebook
- Pitch a trail or park project ideas to us
- Apply to serve on our board
- Sign up for our Mobile App
- Support other organizations who also support trail and park development





Contact us

www.matsutrails.org

Ksollien@matsutrails.org

Thank You

907-764-8757

642 South Alaska Street
Suite 215 Koslosky Center
Palmer, Alaska