


An aerial photograph of a wide river valley. In the background, a range of rugged mountains with snow-capped peaks stretches across the horizon. The middle ground shows a large, braided river system with multiple channels and gravel bars. To the right, a small town or village is visible, surrounded by fields and some industrial or agricultural structures. The foreground is dominated by a dense forest with trees in various shades of yellow and green, indicating an autumn setting. A dark teal rounded rectangle is overlaid on the center of the image, containing white text.

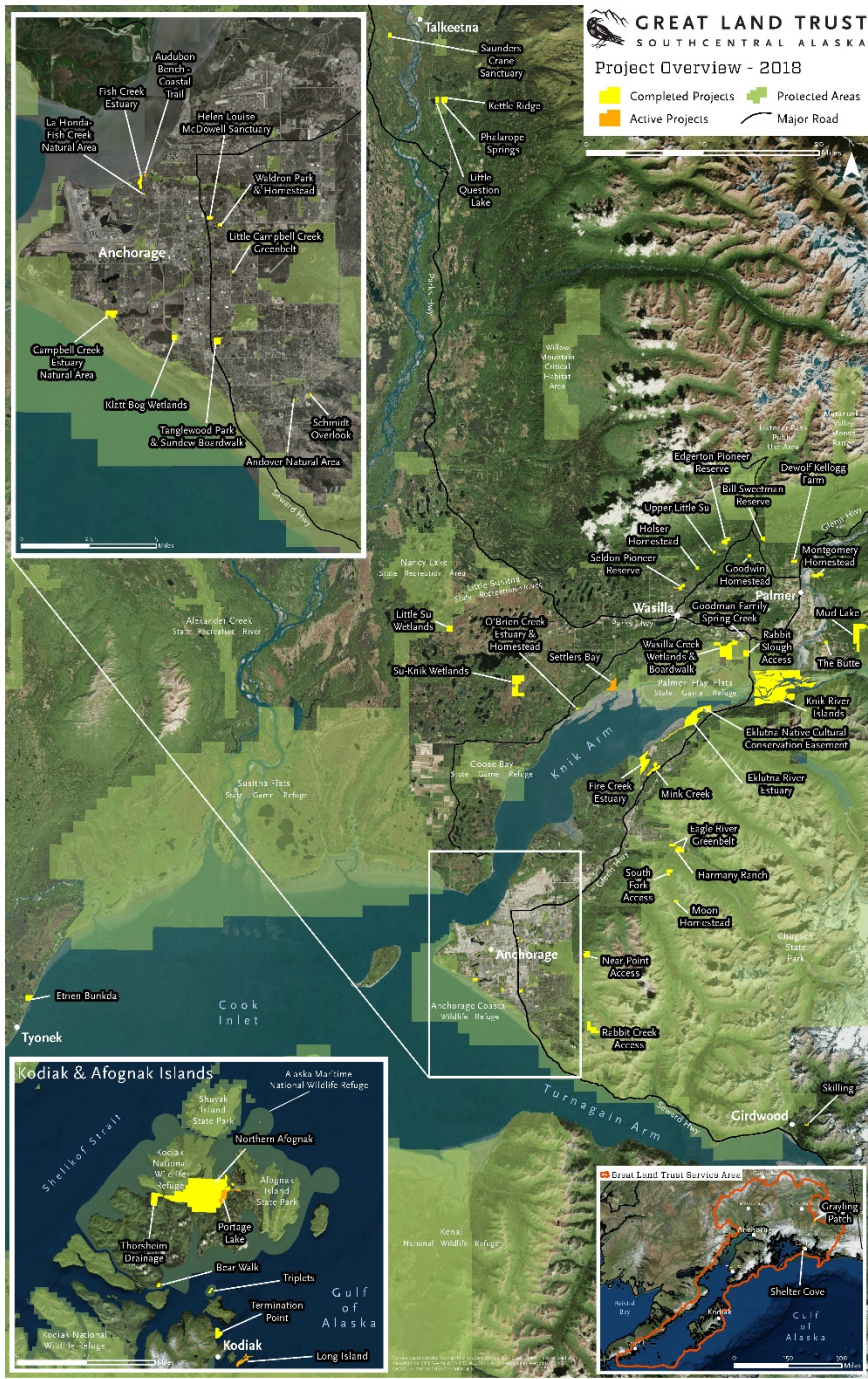
Great Land Trust Salmon Habitat Conservation in the Mat-Su

Libby Kugel, Great Land Trust

- 
1. Great Land Trust Background
 2. GLT & the Salmon Habitat Partnership
 3. Mat-Su Salmon Prioritization
 4. GLT Projects in the Mat-Su

What is a land trust?

- Non-profit that protects land permanently and directly
- Nearly 1,700 land trusts in USA
- Lands protected include farms, wetlands, wildlife habitat, urban gardens and parks, forests, ranches, watersheds, coastlines, river corridors, and trails



Since 1995, GLT has:

- Completed 54 projects
- Facilitated 39 conservation easements
- Protected over 50,000 acres of land
- Completed 21 public access projects.

Currently, GLT is actively developing projects in over 9 communities, including Anchorage, Cordova, Kenai, Kenny Lake, Kodiak, Palmer, Talkeetna, Valdez, and Wasilla.

GLT & the Salmon Habitat Partnership

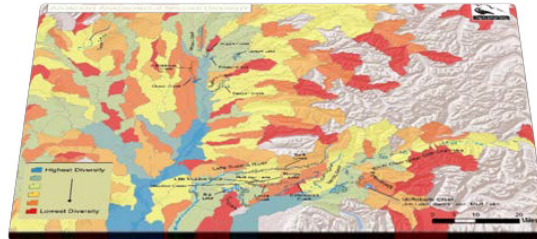
- Long-term goals of the Mat-Su Basin Salmon Habitat Partnership: protect and restore salmon habitat
- GLT helps the partnership meet a number of objectives listed in the strategic plan, including:
 - Identification and protection of priority salmon habitat
 - Conserving wetlands for salmon

Prioritization Scoring Process

Development Vulnerability



Salmonid Species Diversity by Subwatershed



Anadromous Stocks of Concern

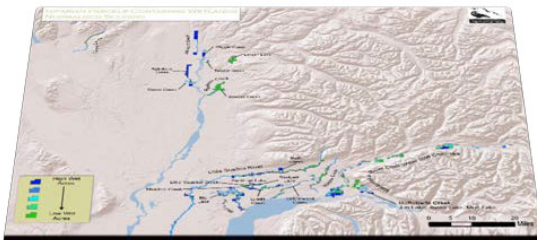
Region	Waterbody	Stock of Concern Status
East Susitna	Willow Creek Chinook	Adopted 2011
	Goose Creek Chinook	Adopted 2011 (yield), Recommended 2013 (management)
	Sheep Creek Chinook	Recommended 2013
Susitna Main Stem	Susitna River Coho	Adopted 2011
West Susitna	Alexander Creek Chinook	Adopted 2011
West Cook Inlet	Theodore River Chinook	Adopted 2011
	Chuitna River Chinook	Adopted 2011
	Louis River Chinook	Adopted 2011

+

+

+

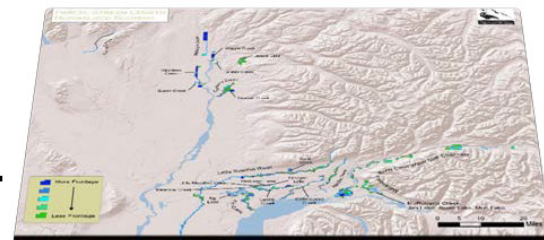
Normalized Area of Wetlands



Adjacency to Protected Lands



Normalized Stream Length

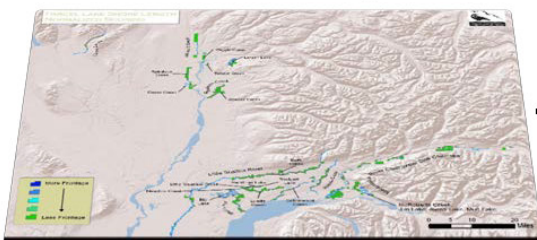


+

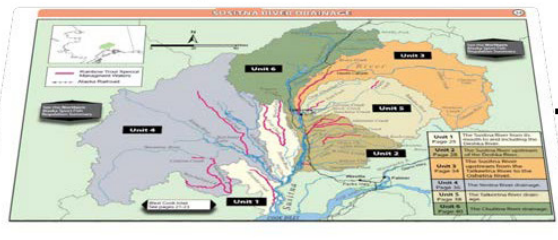
+

+

Normalized Shore Length

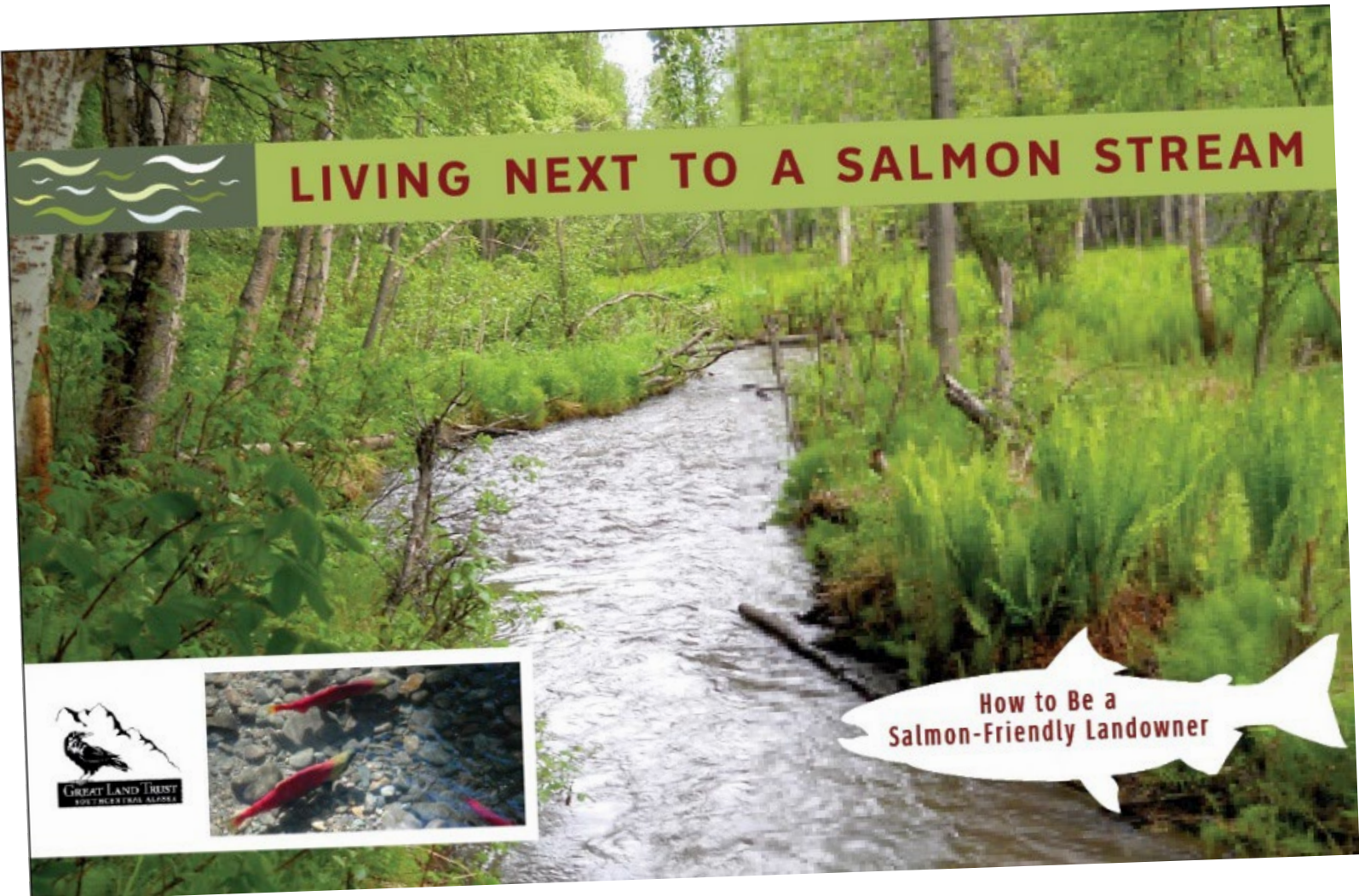


Sport Fisheries



Adjacency to Lands of Same Landowner



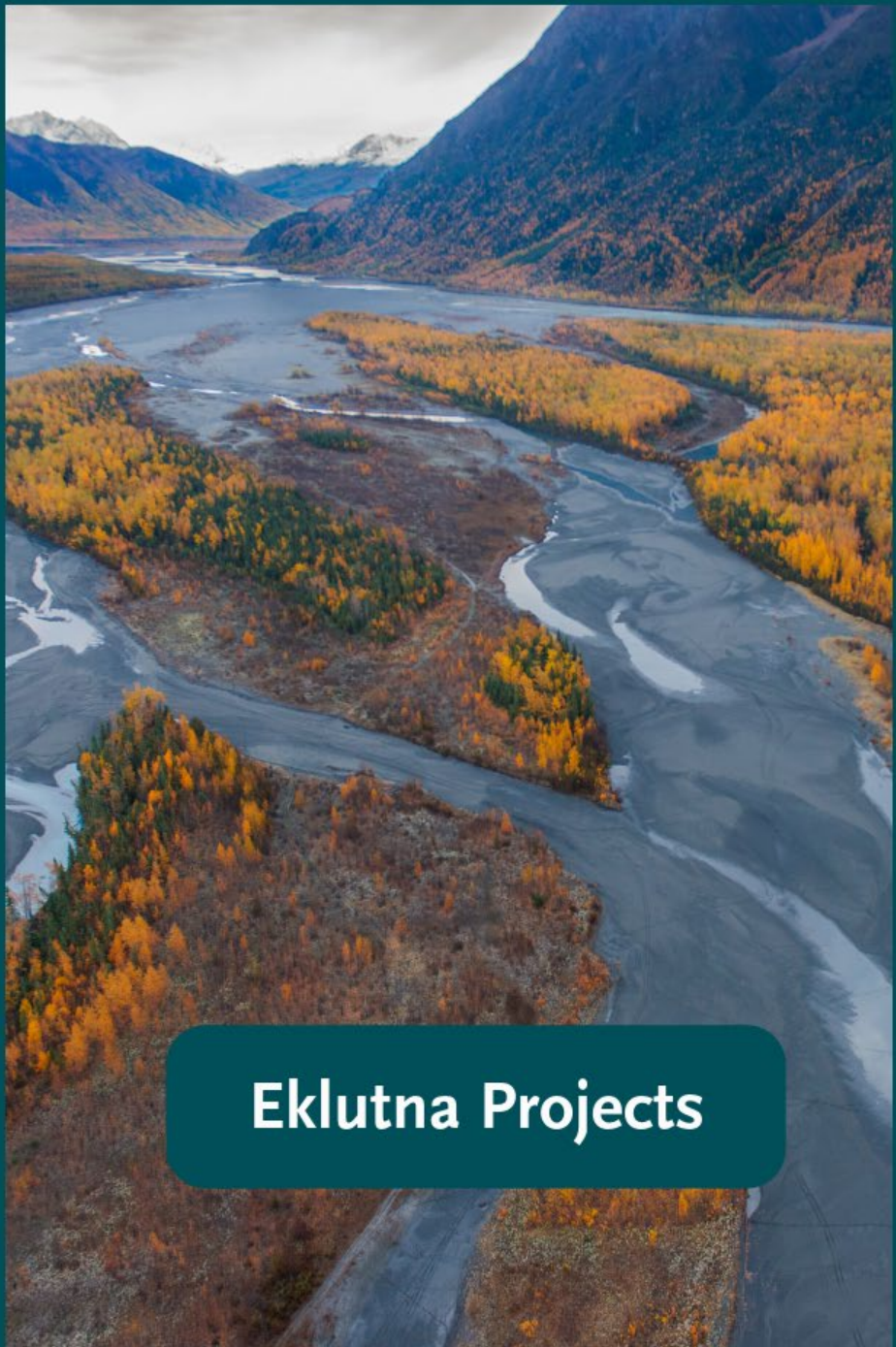


LIVING NEXT TO A SALMON STREAM





© Bob Waldron

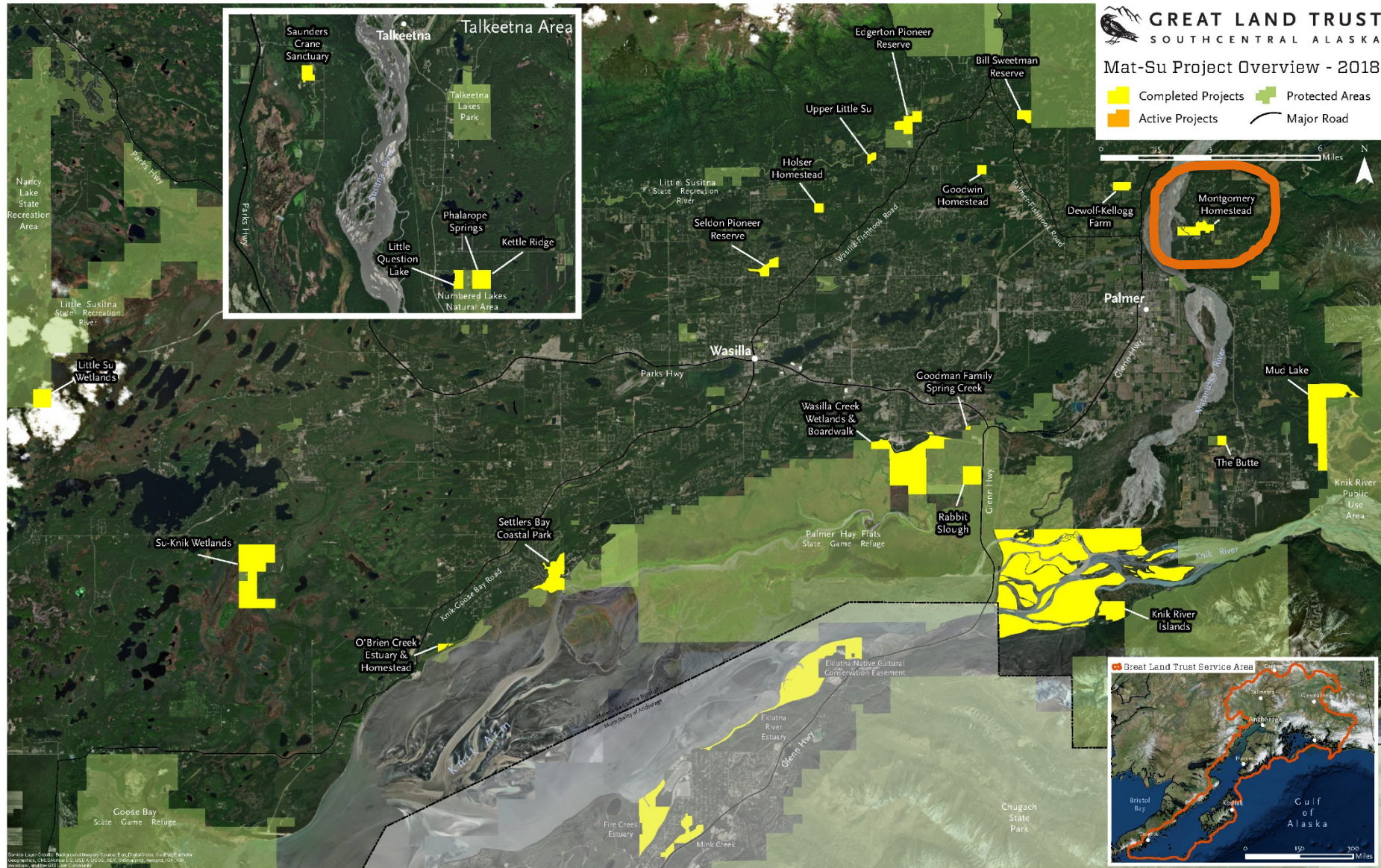


Eklutna Projects



Mat-Su Project Overview - 2018

- Completed Projects
- Active Projects
- Protected Areas
- Major Road

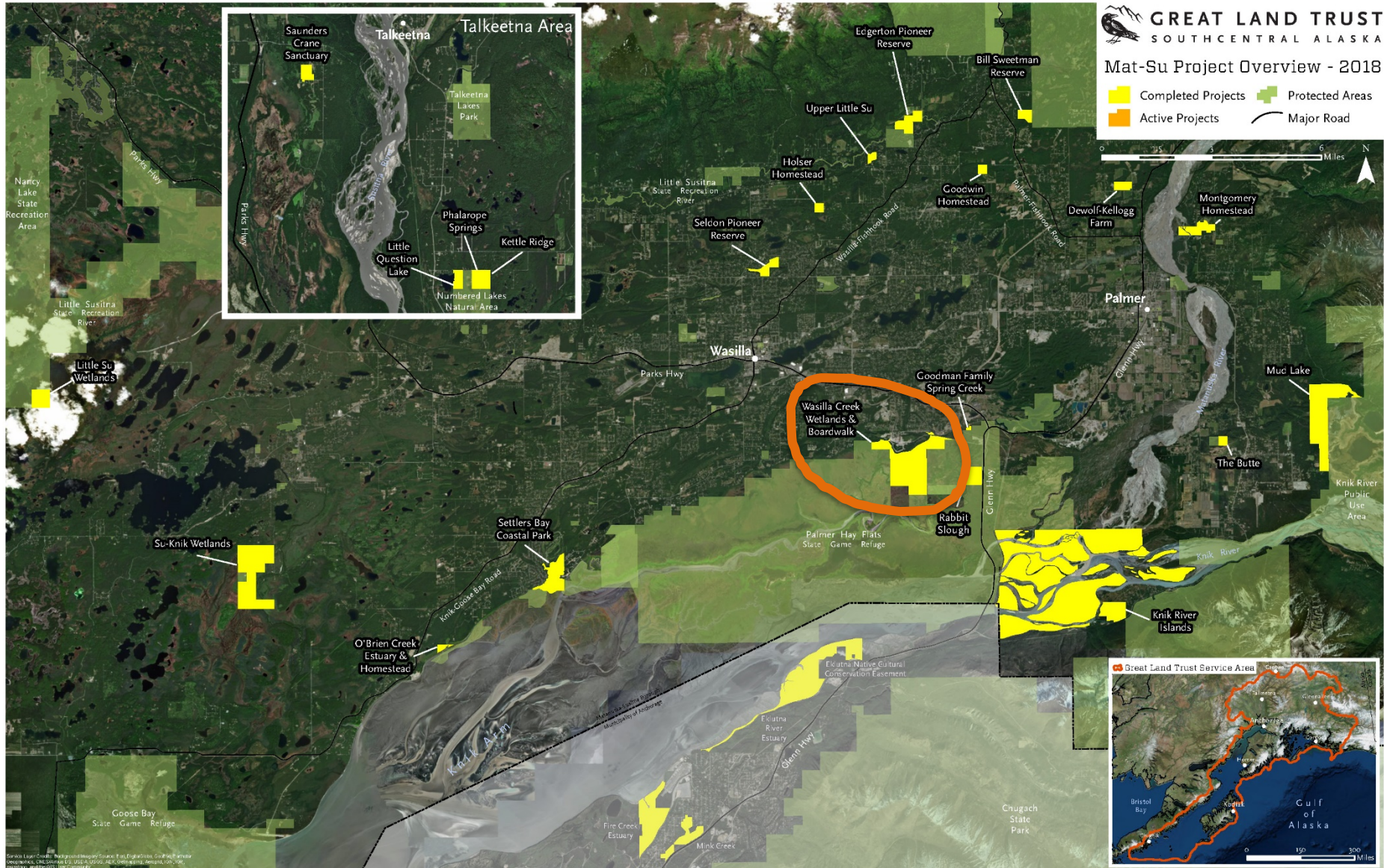


© 2018 Great Land Trust. All rights reserved. This document is the property of the Great Land Trust. It may be used for informational purposes only and is not to be used for advertising or promotional purposes. All other rights reserved.

Map Updated: June 2018

Montgomery





GREAT LAND TRUST
SOUTHCENTRAL ALASKA

Mat-Su Project Overview - 2018

- Completed Projects
- Protected Areas
- Active Projects
- Major Road

Talkeetna Area

Saunders Crane Sanctuary

Talkeetna Lakes Park

Phalarope Springs

Little Question Lake

Numbered Lakes Natural Area

Kettle Ridge

Wasilla Creek Wetlands & Boardwalk

Great Land Trust Service Area

Bristol Bay

Wasilla

Palmer

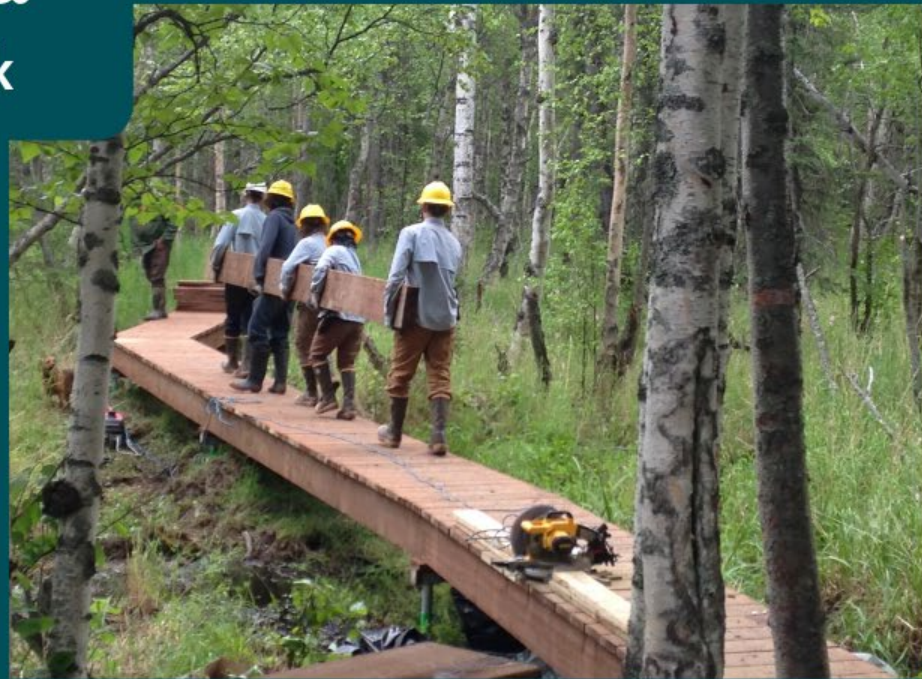
Chugach State Park

Gulf of Alaska

Source: Esri, DeLorme, GeoEye, (GeoEye), IGN, Intermap, (Intermap), Inc, Swire, Bing, Aero, IGN, USGS, (USGS), Aero, IGN, Intermap, (Intermap), Inc, Swire



Wasilla Creek Wetlands & Boardwalk

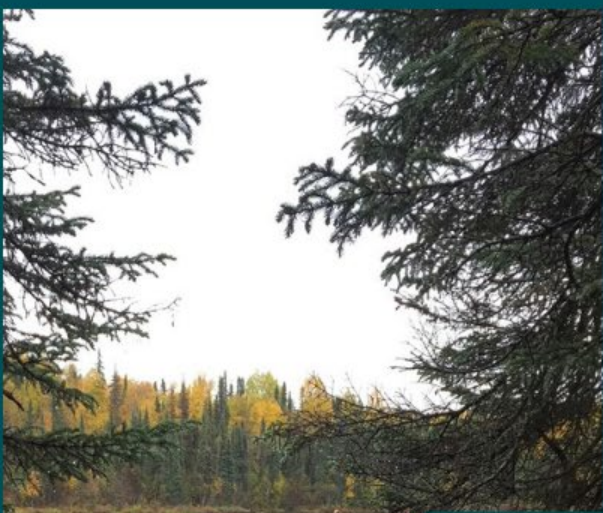




**Settlers Bay
Coastal Park**







Talkeetna



An aerial photograph of a wide river valley. The river is light-colored and winds through a valley filled with dense forest. The trees have vibrant autumn colors, ranging from yellow to orange. In the background, a range of rugged mountains with snow-capped peaks stretches across the horizon under a clear sky. The foreground shows a mix of forest and some open areas, possibly a golf course or a park.

Questions?

Libby Kugel, Great Land Trust
lkugel@greatlandtrust.org
907-278-4998

For more information:
www.greatlandtrust.org
Or find us on Facebook and Instagram
@greatlandtrust

Photos courtesy of Carl Johnson, Devdharm Khalsa, Will Koeppen,
Bob Waldrop