

# Instream Flow Reservations in the Mat-Su Basin and Upper Cook Inlet

Ann Marie Larquier, Kevin Keith, Leah  
Ellis & Joe Klein



Alaska Department of Fish & Game

Division of Sport Fish - RTS



# Our Topics Today

- Who are we? What do we do?
- How do we accomplish our goals?
- What are we doing in the Mat-Su region?

A scenic view of a river with a rocky bed and a lush green bank. The water is clear, revealing the dark, rounded stones on the riverbed. The banks are covered in dense, vibrant green vegetation, including trees and shrubs. The overall scene is peaceful and natural.

# SARCU:

## Statewide Aquatic Resources Coordination Unit

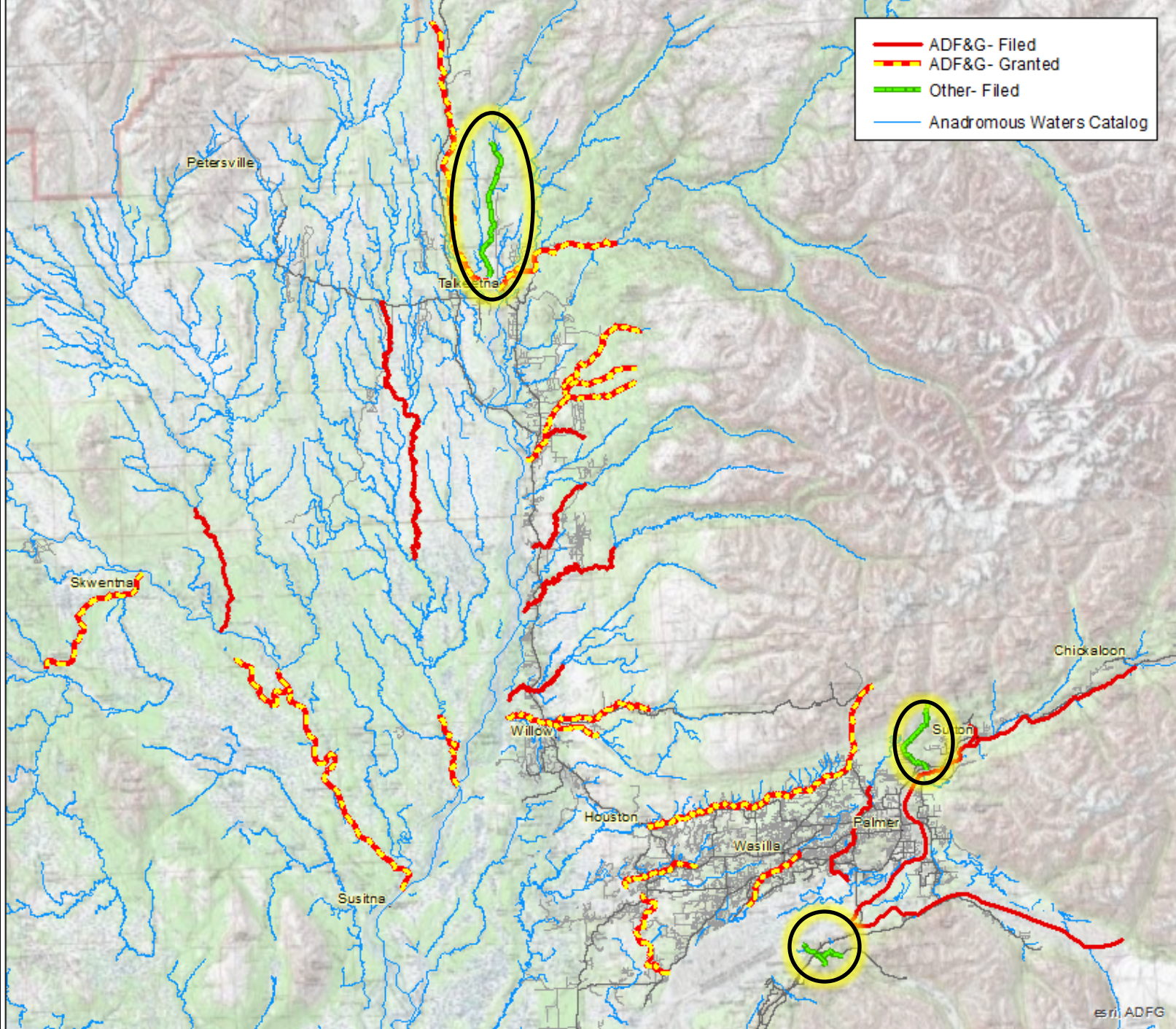
To sustain healthy fish and wildlife  
habitat by protecting **instream flow**

# Reservation of Water

Alaska Statute 46.15.145

- **Water management tool** to protect stream flow and lake levels
- **Instream flow:** volume of water needed to protect resources and values
  - Fish and wildlife habitat, migration, and propagation
  - Recreational activities
  - Navigation and transportation
  - Sanitation and water quality





# Reservation of Water

Alaska Statute 46.15.145

Need to  
**QUANTIFY**  
amount of water  
in a river or lake





May 25,  
2017



June 8, 2017

# Kroto

# Creek



July 18, 2017



Aug 22, 2017



# Streamgages



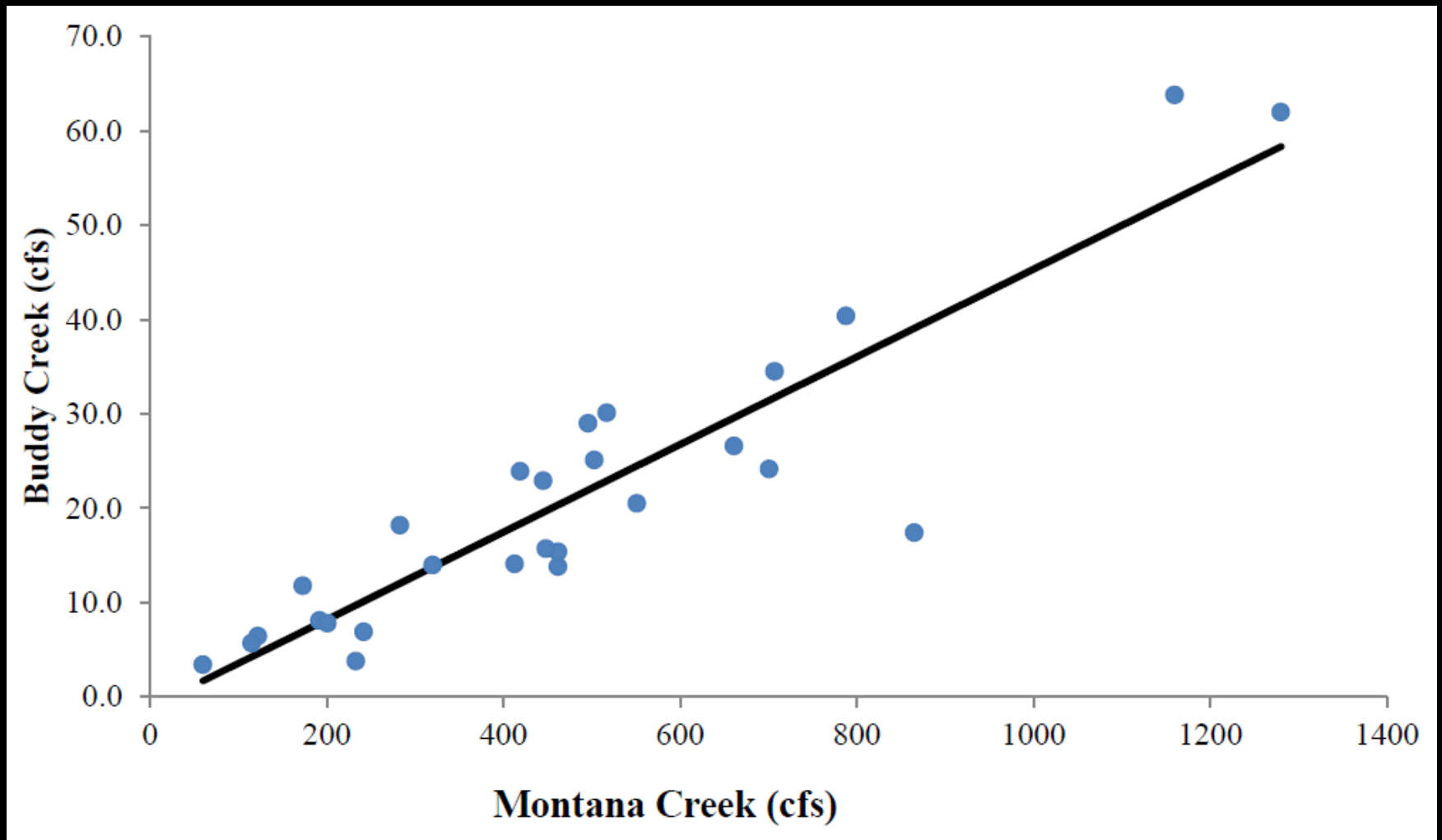
# Converting gage data to discharge data



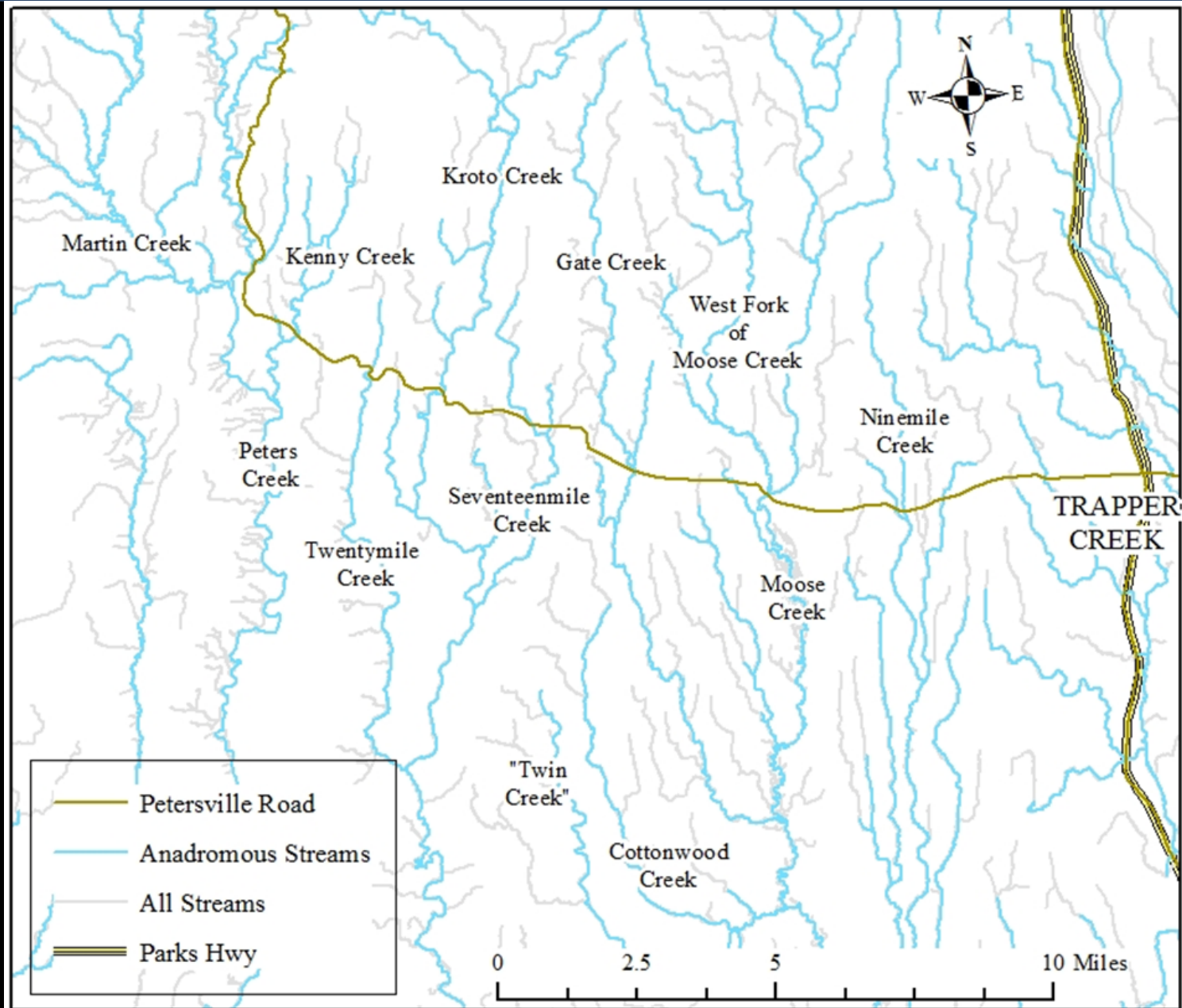
# Converting gage data to discharge data



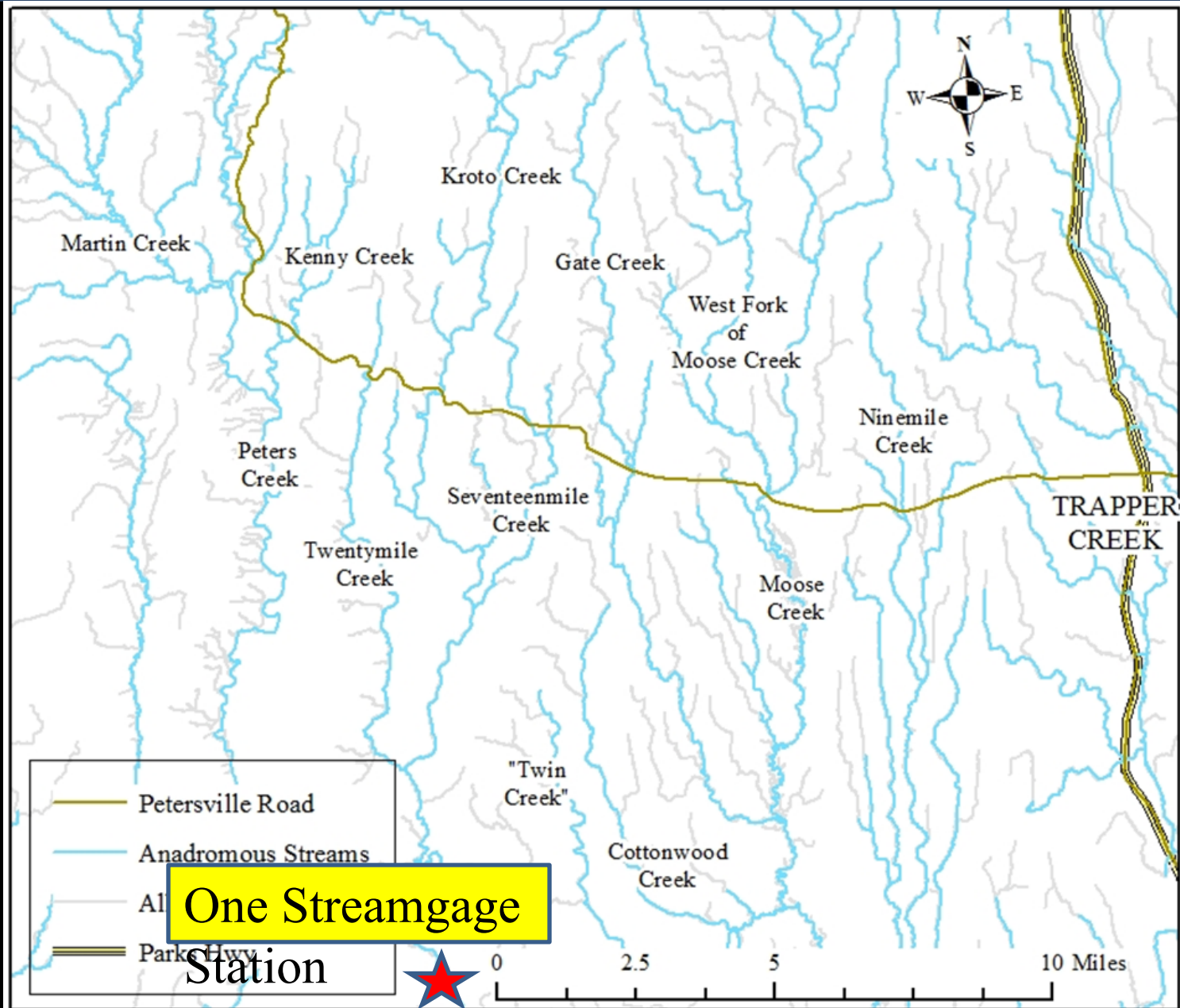
# It works!



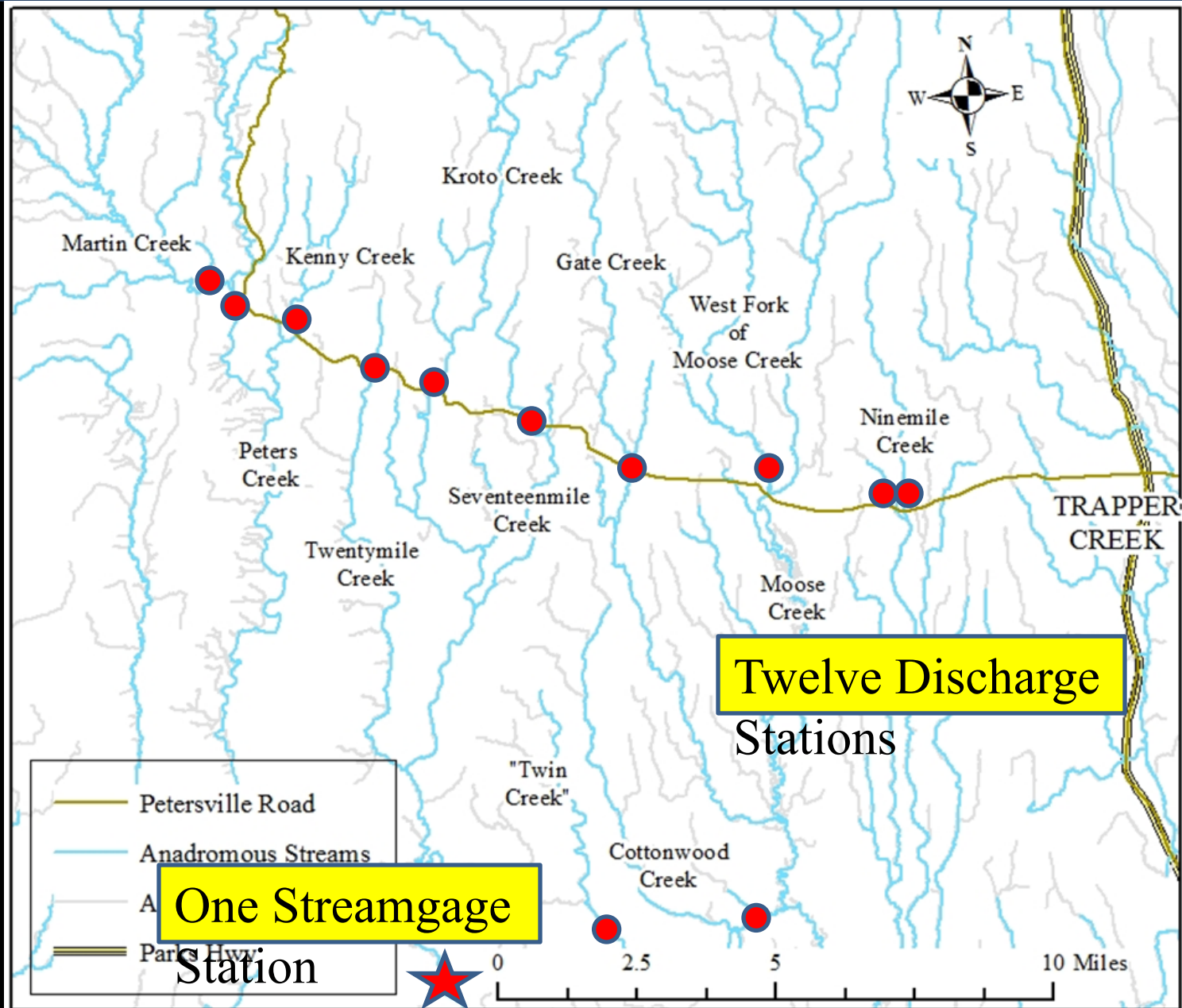
# The Streamgauge Network



# The Streamgauge Network



# The Streamgauge Network





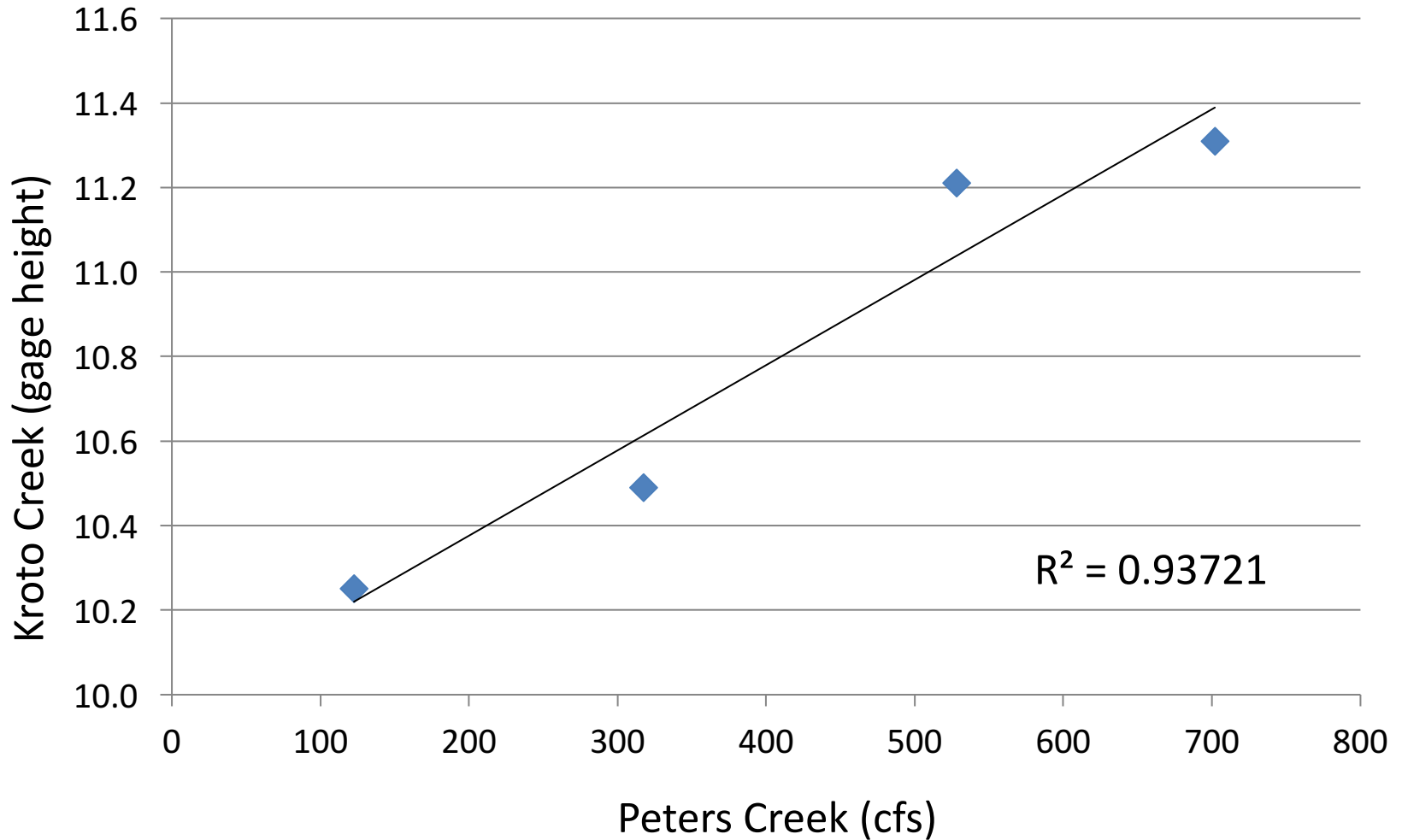
# Peters Creek



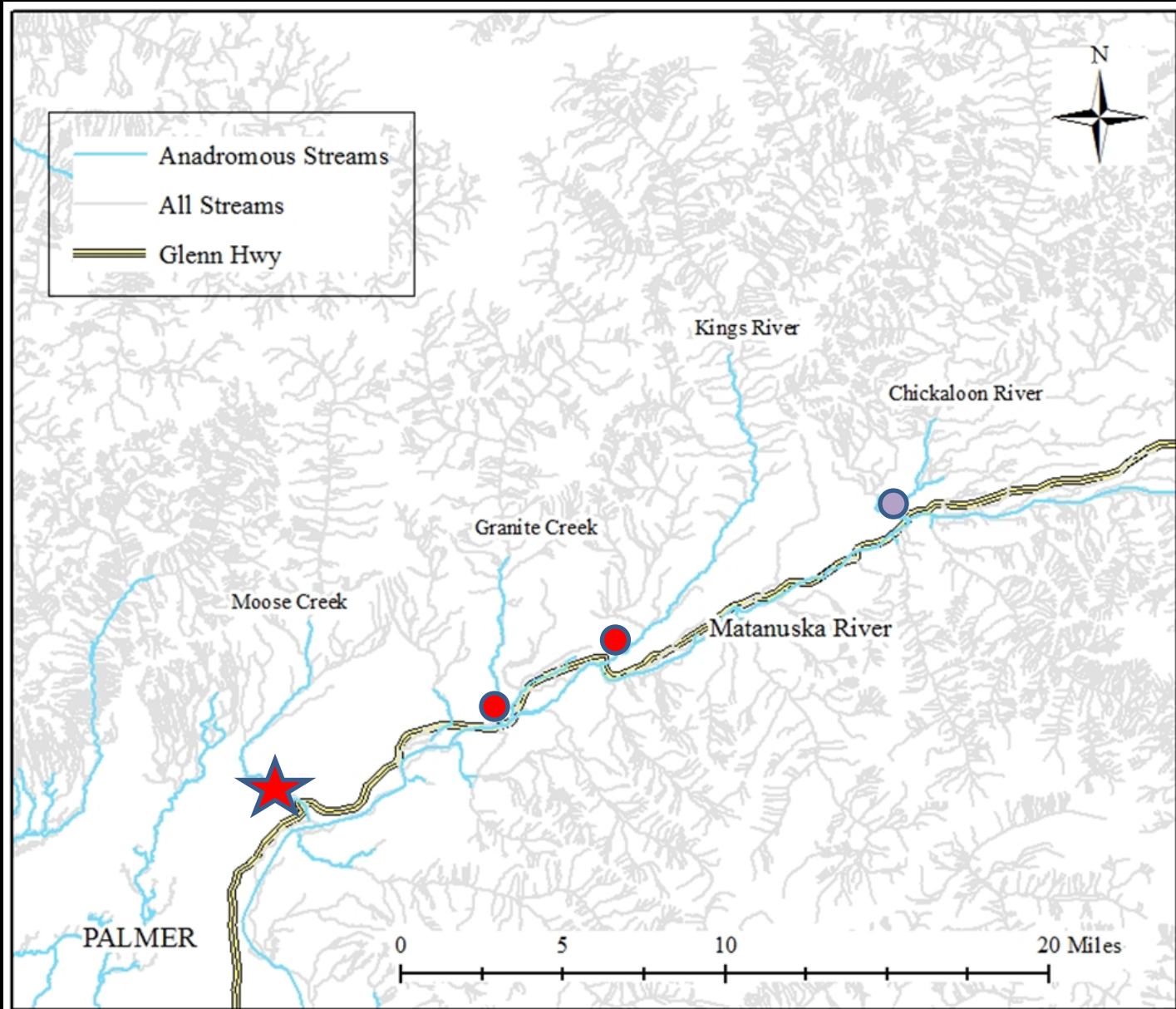


Gate Creek

# But does it work?



# Similarly . . .





Kings River

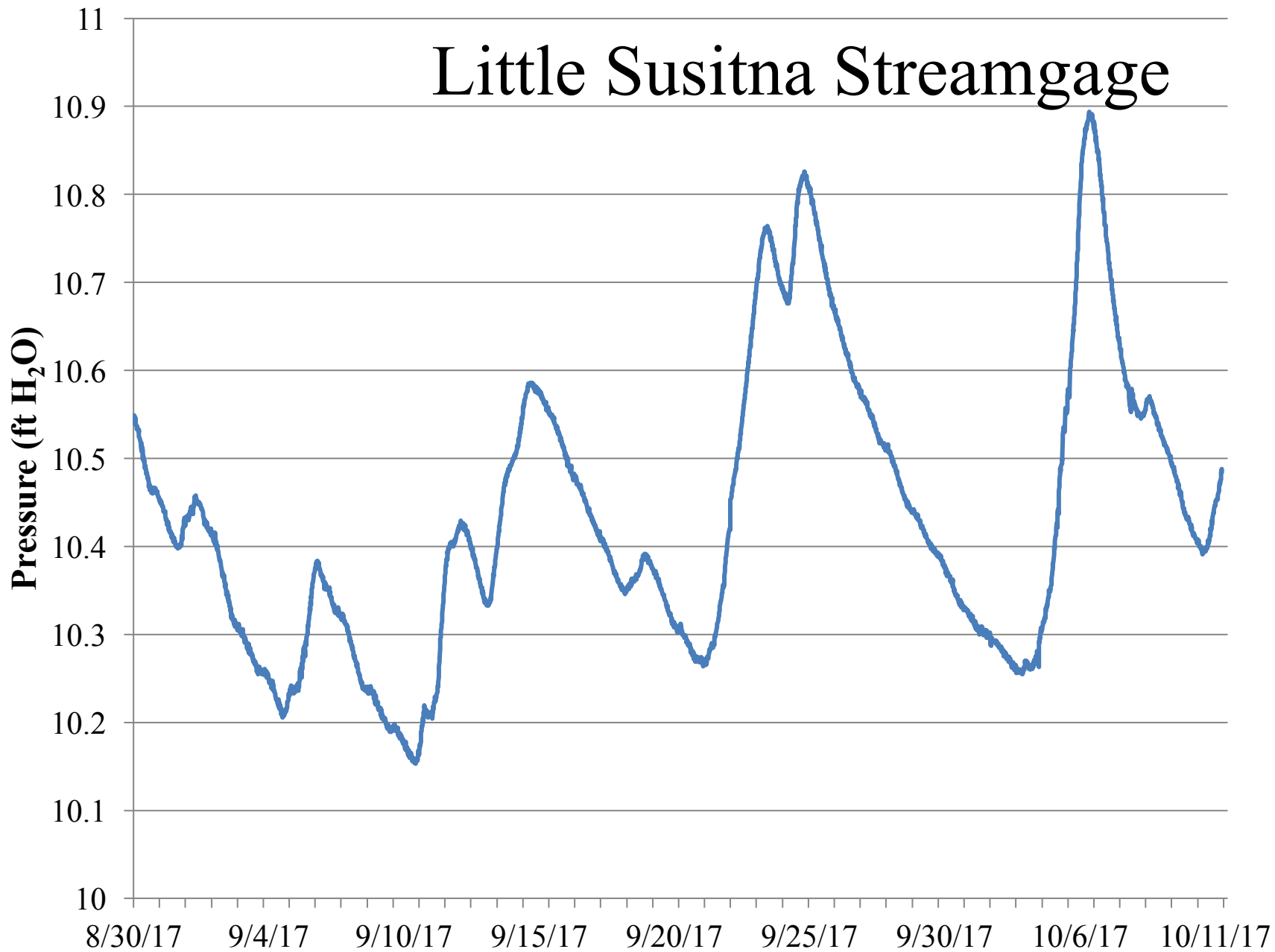


Kings River



Little Susitna River

# Little Susitna Streamgauge







# Contact us if you...

- Have stream discharge data to share!
- Are interested in performing discharge measurements!
- Would like to make a Reservation of Water!

# Questions?

Joe Klein –

[joe.klein@alaska.gov](mailto:joe.klein@alaska.gov), 267-2148

Ann Marie Larquier –

[ann.larquier@alaska.gov](mailto:ann.larquier@alaska.gov)

