

NFHAP funding update 2014



Kim Sollien, Mat-Su Program Director



GREAT LAND TRUST

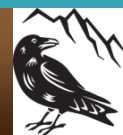
SOUTHCENTRAL ALASKA



Our mission

Conserving and stewarding lands and waters essential to the quality of life and economic health of Alaskans.

Conservation benefiting people and communities.



GREAT LAND TRUST

SOUTHCENTRAL ALASKA

Happiness
Habitat
Access
Partnerships





berries

love of the land

explore

wild foods

recreation

family

salmon

water

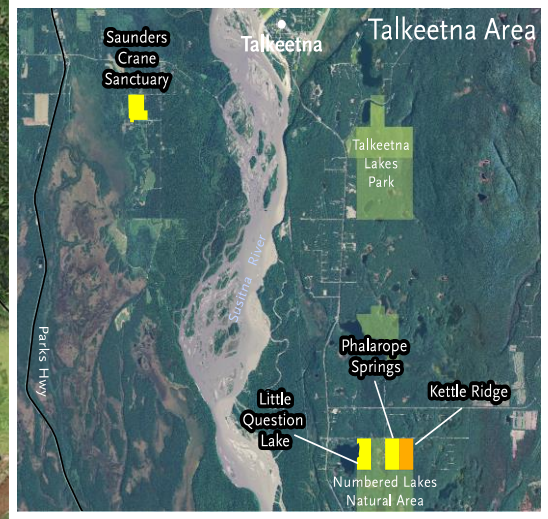
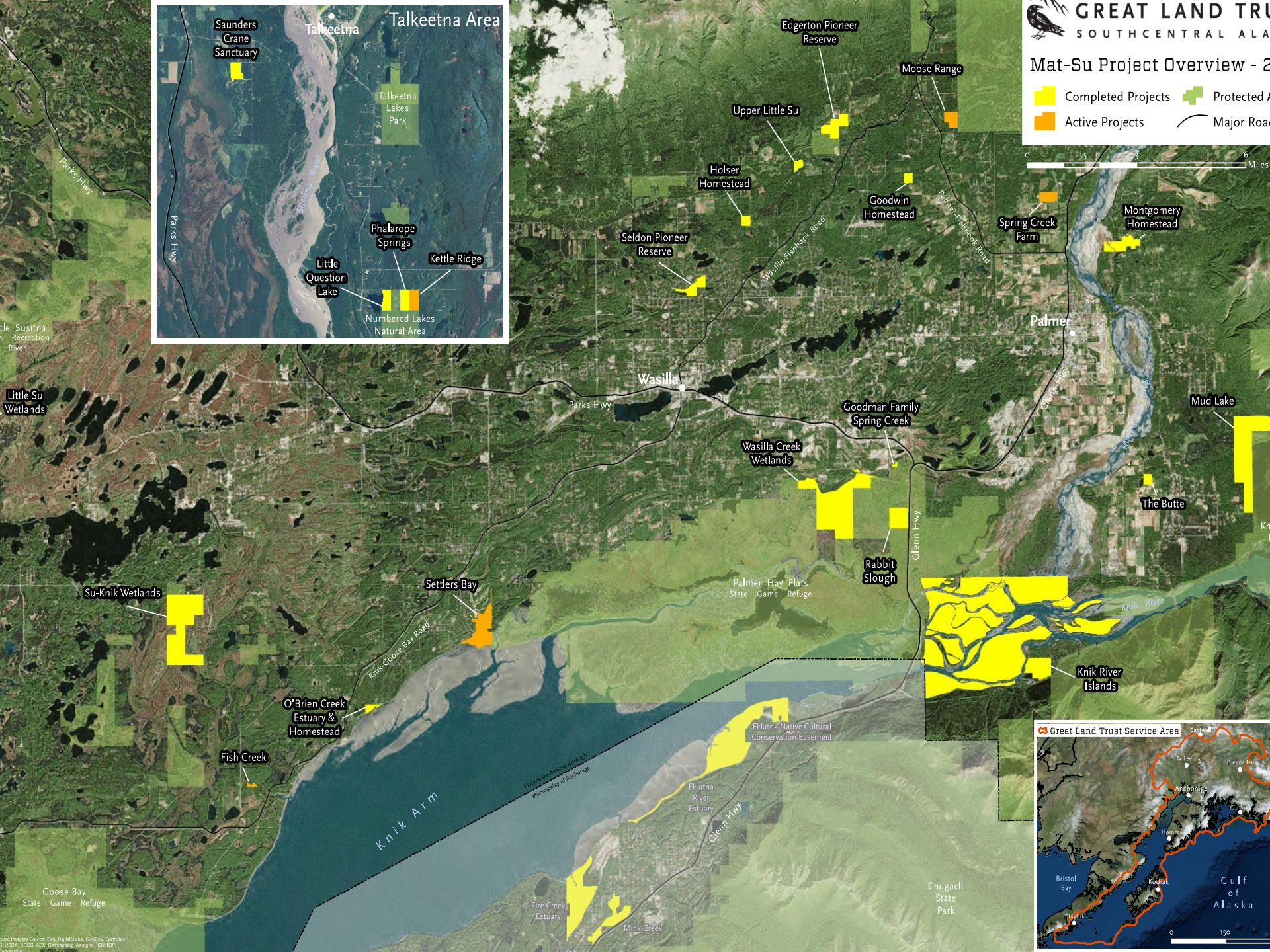
Our Shared Values

- Living with Wildlife
- Outdoor Recreation
- Wild Salmon
- Love of the Land
- Generational traditions
- Beautiful Views and Scenery
- Living with the Seasons



Mat-Su Project Overview - 2023

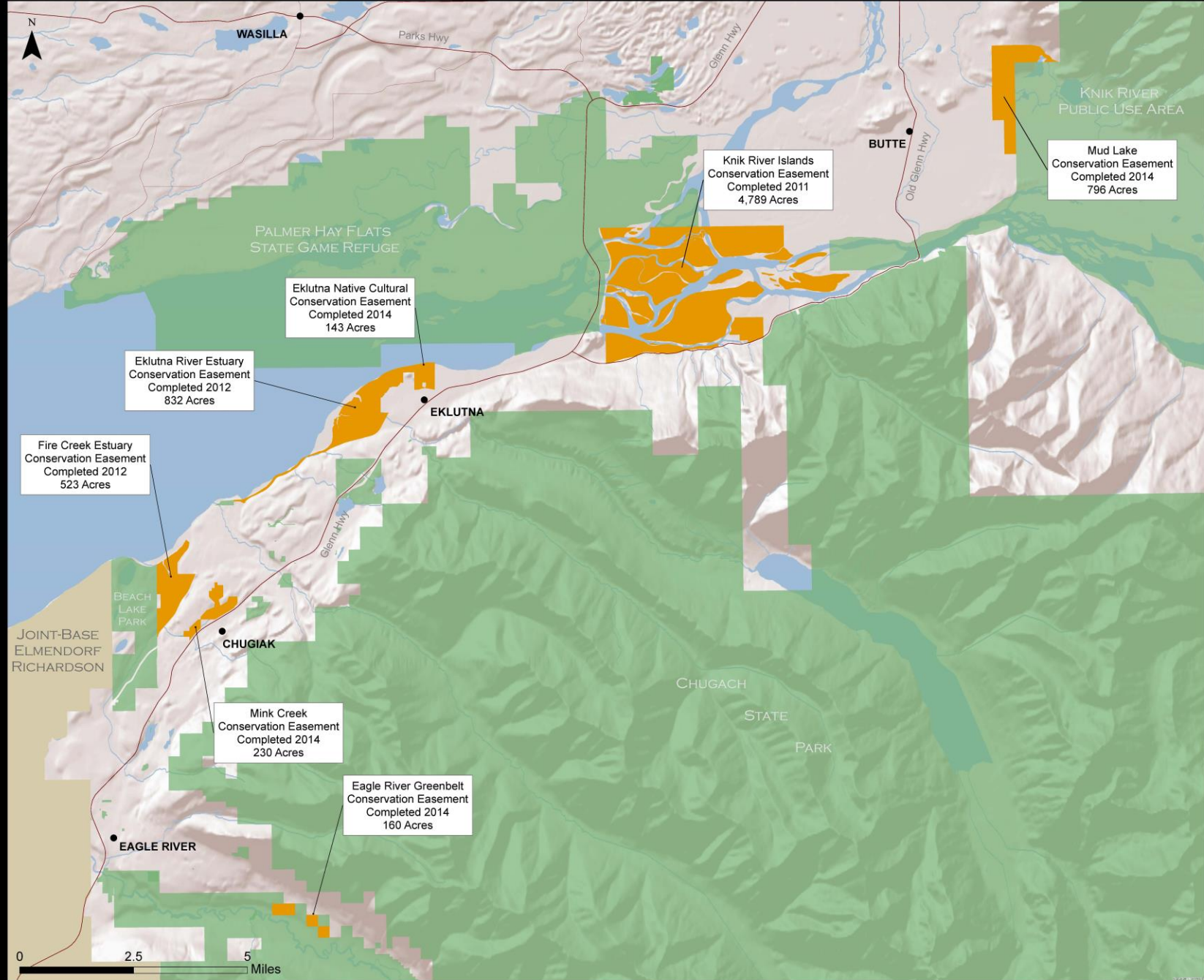
■ Completed Projects ■ Protected Areas
■ Active Projects — Major Roads



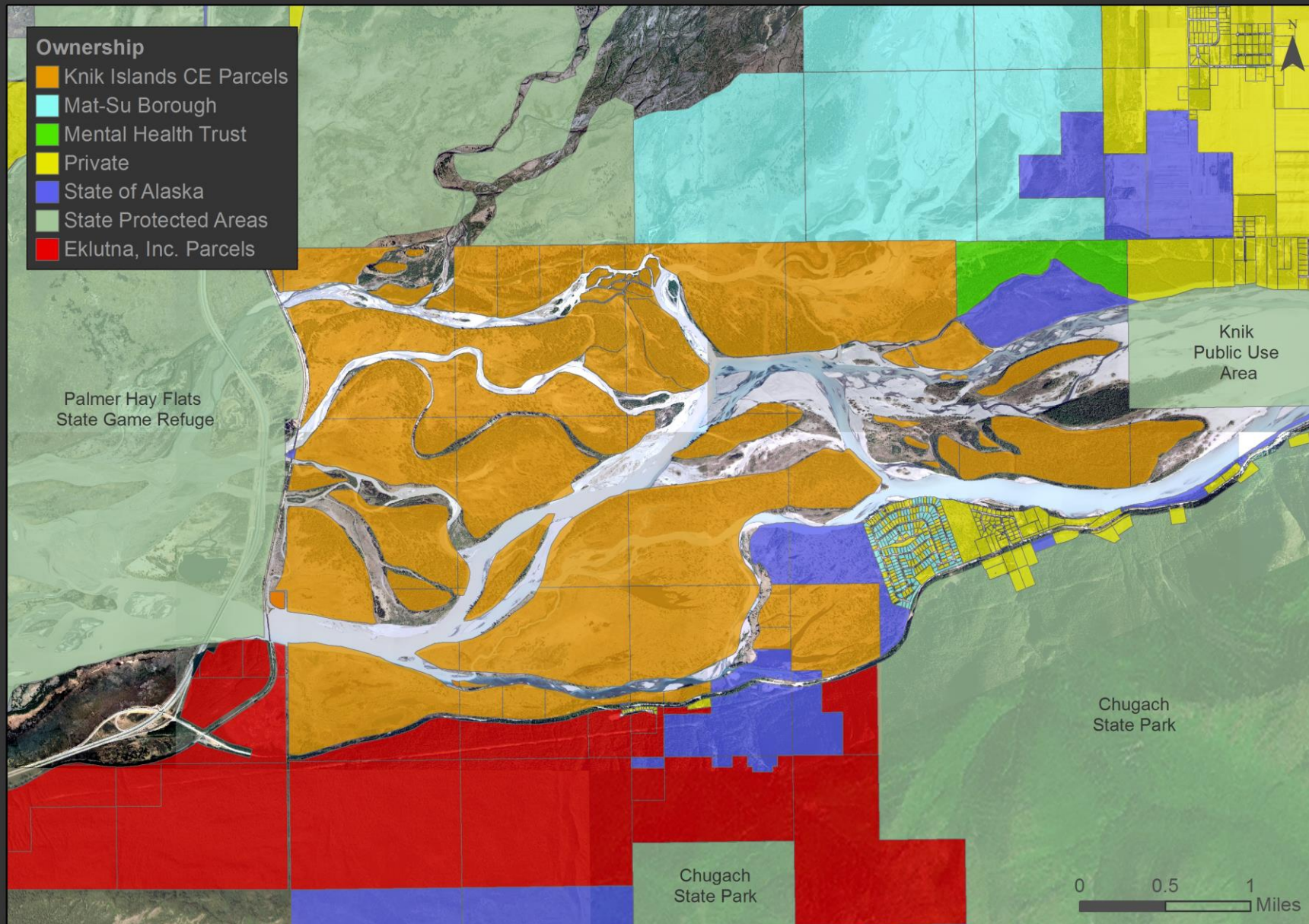
Map Imagery Source: Esri, DigitalGlobe, GeoEye, Earthstar, USDA, USGS, Aero, Earthstar, IGN, IGP, etc.

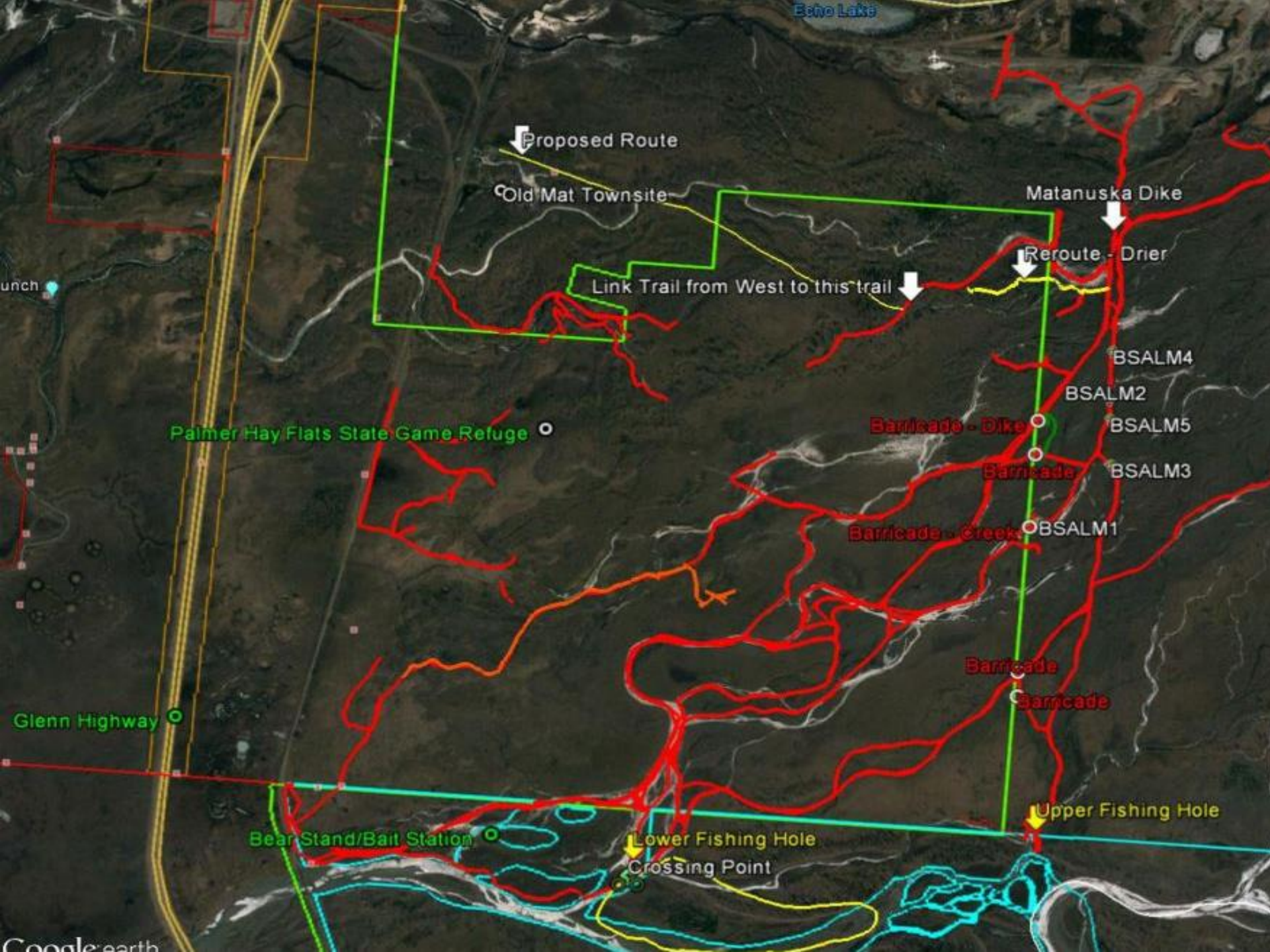
GREAT LAND TRUST AND EKLUTNA INC. CONSERVATION PROJECTS

7,473 ACRES CONSERVED



KNIK ISLANDS CONSERVATION EASEMENT OWNERSHIP MAP





Proposed Route

Old Mat Townsite

Link Trail from West to this trail

Matanuska Dike

Reroute - Drier

Palmer Hay Flats State Game Refuge

BSALM4

BSALM2

BSALM5

BSALM3

Barricade - Creek

BSALM1

Barricade - Dike

Barricade

Barricade

Glenn Highway

Bear Stand/Bait Station

Lower Fishing Hole
Crossing Point

Upper Fishing Hole





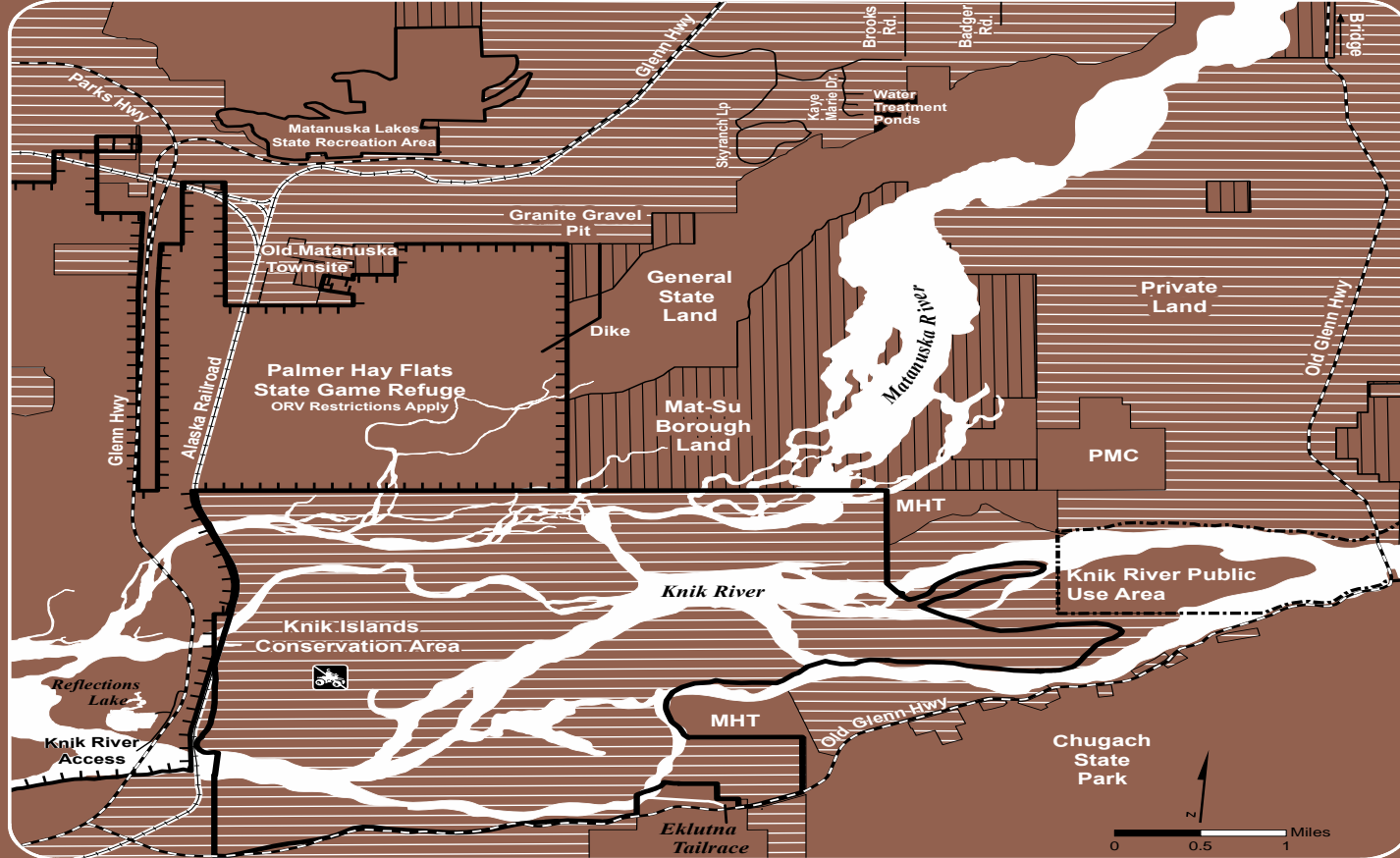












Palmer Hay Flats State Game Refuge (ADFG): 

- Open to public access
- Off-road use of vehicles (including ATVs) prohibited, except between Nov 9 and March 31 when vehicles less than 1,000 lbs (including snow machines) are allowed only with 12" of snow and frozen ground (5 AAC 95.505(1))
- Area within 1/2 mile of Glenn Highway is always closed to off-road use of vehicles

Anadromous Fish Stream Crossings (ADFG):

- Vehicles may cross only at signed locations authorized by general permit (AS 16.05.871(b))
- Contact ADFG for a copy of general permit and a map of crossing locations

Knik River Public Use Area (ADNR): 

- Open to public access
- Off-road use of vehicles less than 10,000 lbs allowed provided it does not disturb wetlands or the organic mat to a depth greater than 6" (11 AAC 96.016(c))

Matanuska-Susitna Borough Lands (MSB): 


- Open to public access
- Contact MSB regarding land use and permitting requirements

Alaska State Lands (ADNR): 

- Open to public access
- General State Lands
 - Off-road use of highway vehicles less than 10,000 lbs, and off-road use of recreational vehicles (e.g. ATV, snow machine) less than 1,500 lbs is allowed provided it does not degrade water quality; alter drainages; cause significant rutting, ground disturbance or thermal erosion (11 AAC 96.020(a))

- Mental Health Trust Lands (MHT)
 - Non-Motorized, day use only
- Plant Materials Center (PMC)
 - Non-Motorized, day use only
 - Contact PMC for access

Private Lands : 

- Contact land owner for access
- Knik Islands Conservation Area: 
 - Public access allowed only by permit
 - Contact Eklutna Inc. for access permit
 - Off-road use of vehicles prohibited

**Land Ownership:
Matanuska-Knik Rivers
Floodplain**

- ADFG – 907.861.3200
- ADNR – 907.269.8400
- MSB – 907.745.9631
- MHT – 907.269.8658
- Eklutna Inc. – 907.696.2828
- PMC - 907.745.4469

Destruction of ADF&G signs is a Class A Misdemeanor punishable by a fine of up to \$10,000 and up to 1 year in jail. Report violations to the Alaska State Troopers at 907.352.5401







Mat River Park
Old Glenn Highway

General State Land

Palmer Airport

Mat-Su Borough Land

Glenn Highway

Old Glenn Highway

Private Land

Outer Springer Loop

Private Land

Mat-Su Borough Land

Outer Springer Loop

City of Palmer

General State Land

Private Land

Private Land

Granite Construction Pit

Sky Ranch

Private Land

Bodenburg Loop

Bodenburg Loop

Palmer Hay Flats State Game Refuge

Mat-Su Borough Land

General State Land

Mat-Su Borough Land

Butte Farm
Alaska Plant Materials Center

Bodenburg Spur

Old Glenn Highway

KNIK RIVER ISLANDS CONSERVATION EASEMENT



Projected Coordinate System:
NAD 1983 State Plane Alaska 4 FIPS 5004 Feet



Conservation Easement Boundary Trail

Signage

- Brown & White Map with "You Are Here"
- Eklutna Ownership Sign
- Eklutna Boundary Marker



Peter May Falls State Game Refuge (1976)

- Open to public access
- Off road use of vehicles including ATVs, motorcycles, snowmobiles, ATVs and Motorcycles where prohibited, are prohibited under 24 and 24A MCL 11 where prohibited. In the 1980s the surrounding area was purchased and added to the refuge. 75% of area and stream covered by A.C. 10, 100(1)
- Area within 50 feet of State highway is always covered by off road use of vehicles

Antelope Falls State Game Refuge (1976)

- Antelope Falls State Game Refuge is a State Game Refuge established by general permit (A.C. 10, 100(1))
- General A.C. 10 is a form of general permit and is a type of crossing location

Kuk River Pulp Mill State Game Refuge (1976)

- Open to public access
- Off road use of vehicles including ATVs, motorcycles, snowmobiles, ATVs and Motorcycles where prohibited, are prohibited under 24 and 24A MCL 11. A.C. 10 is a type of crossing location

Mahaska Basin State Game Refuge (1976)

- Open to public access
- Crossing permits regarding land use and operating requirements

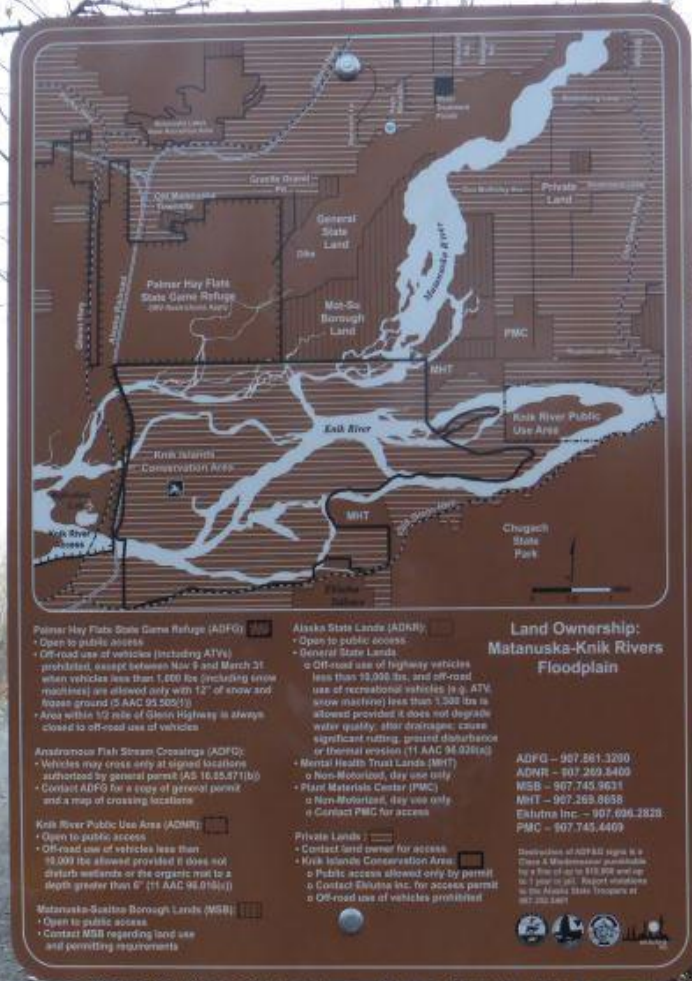
State Game Refuge (1976)

- Open to public access
- General A.C. 10 is a form of general permit and is a type of crossing location

Land Ownership: Mahanaska-Kuk Rivers Floodplain

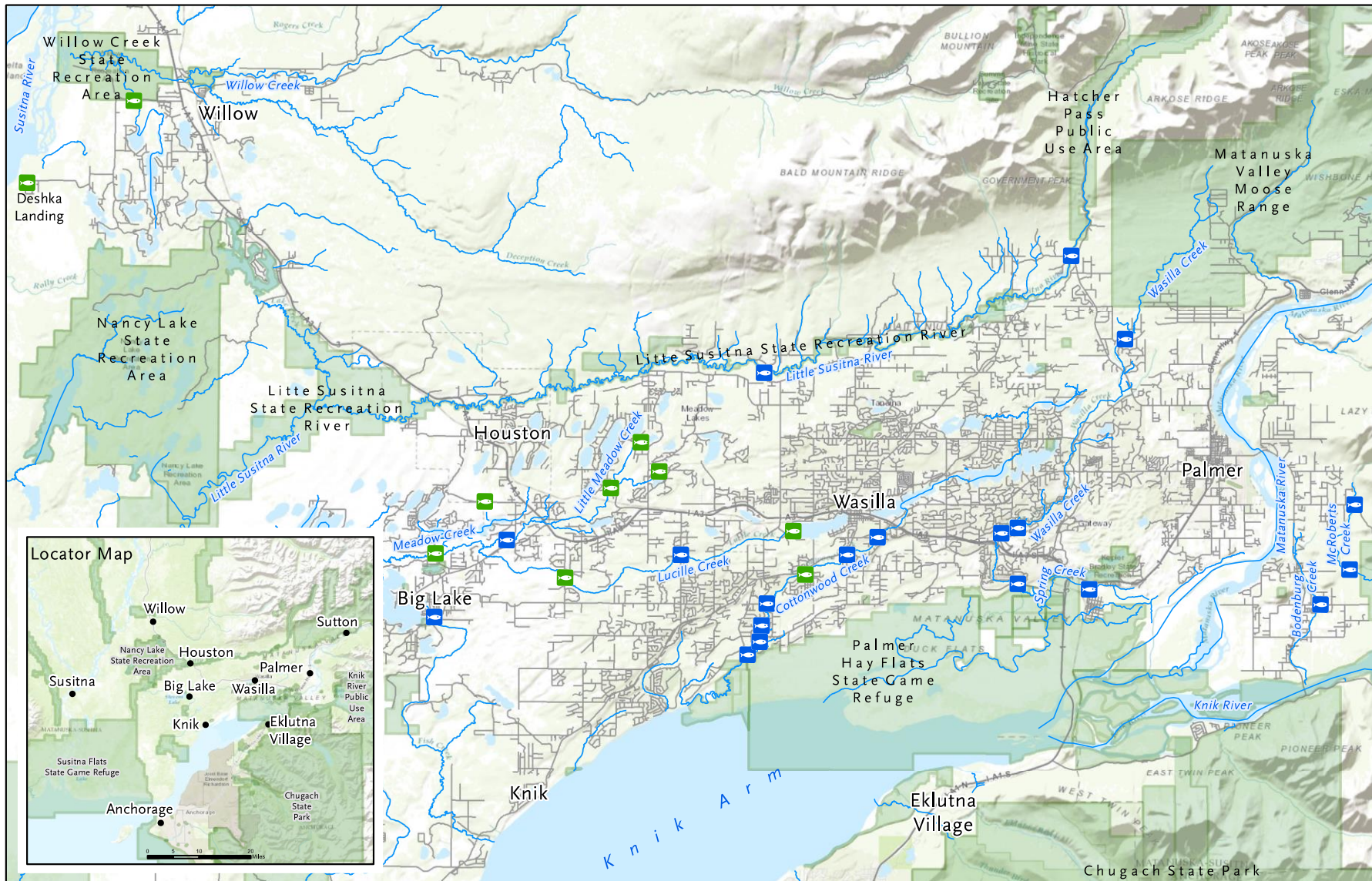
ADFG - 867 961 2000
 ADFG - 867 203 2400
 MNR - 867 145 8211
 MHT - 867 243 8238
 ERM/RS Inc. - 867 268 2222
 PML - 867 745 4468





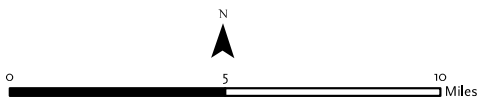


BABY SALMON LIVE HERE SIGN LOCATIONS



Sources: Esri, HERE, DeLorme, TomTom, Intermap, increment P Corp., GEBCO, USGS, FAO, NPS, NRCAN, GeoBase, IGN, Kadaster NL, Ordnance Survey, Esri Japan, METI, Esri China (Hong Kong), swisstopo, MapmyIndia, © OpenStreetMap contributors, and the GIS User Community (topographic base layer); ADNR (protected area); ADFG (fish stream); GLT (protected area & sign)

Projected Coordinate System:
 NAD 1983 State Plane Alaska 4 FIPS 5004 Feet
 Map Prepared: 10.21.2016



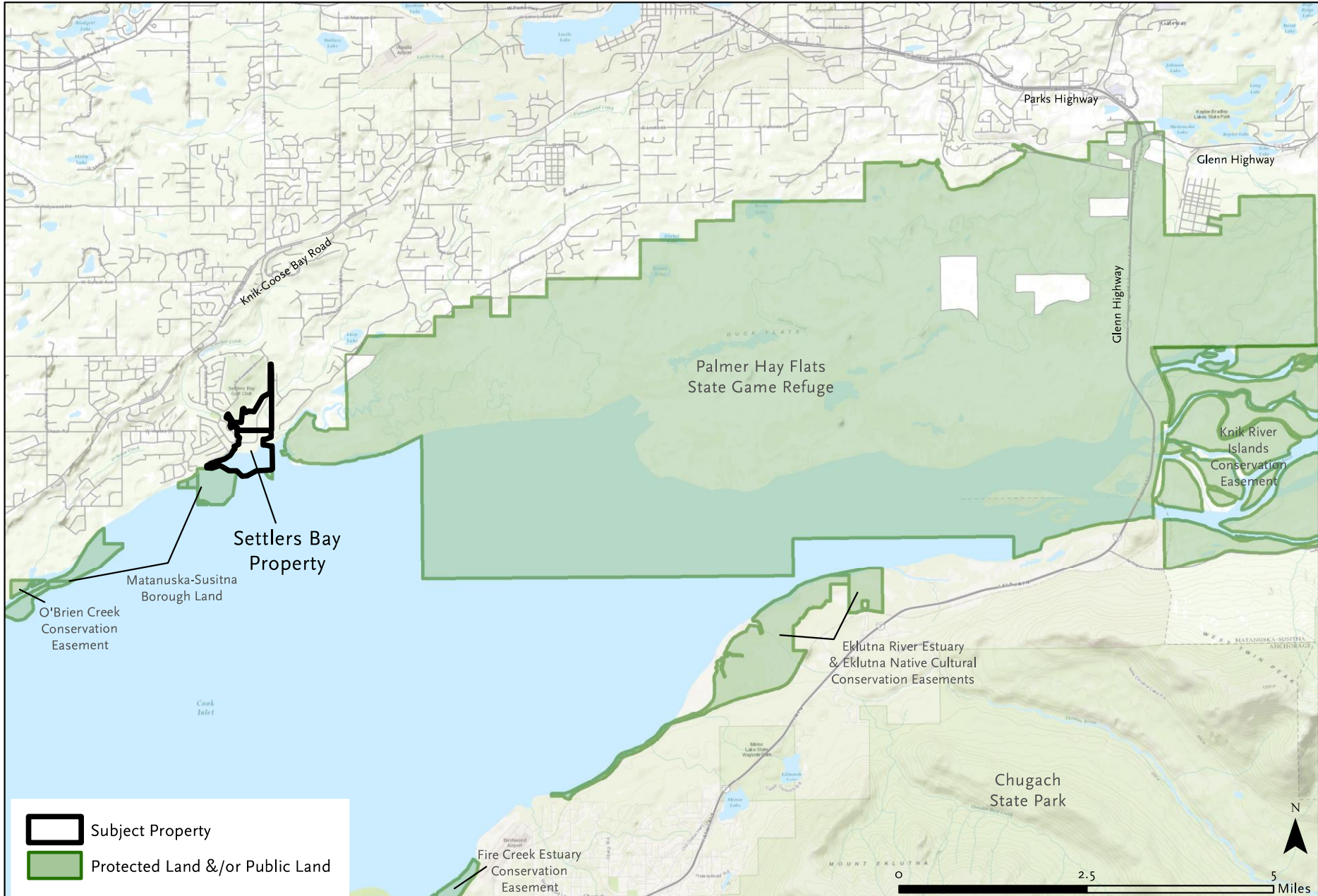
- Baby Salmon Live Here Sign
- Posted
- Proposed
- Anadromous Fish Stream
- Protected Area
- Road





SETTLERS BAY

WASILLA, ALASKA - APPROX. 295 ACRES





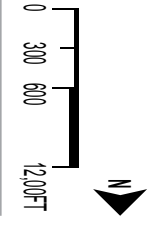


Legend

- - - Property Line
- Archaic Stream
- Wetland

Settlers Bay

CREAT LAND TRUST
RESIDENTIAL ASSES
Draft Trail Plan



REV: 11/15/2016



LANDSCAPE ARCHITECTURE

Thank You

**Winter Celebration
Dec 7th at the Williwaw**



GREAT LAND TRUST
SOUTHCENTRAL ALASKA