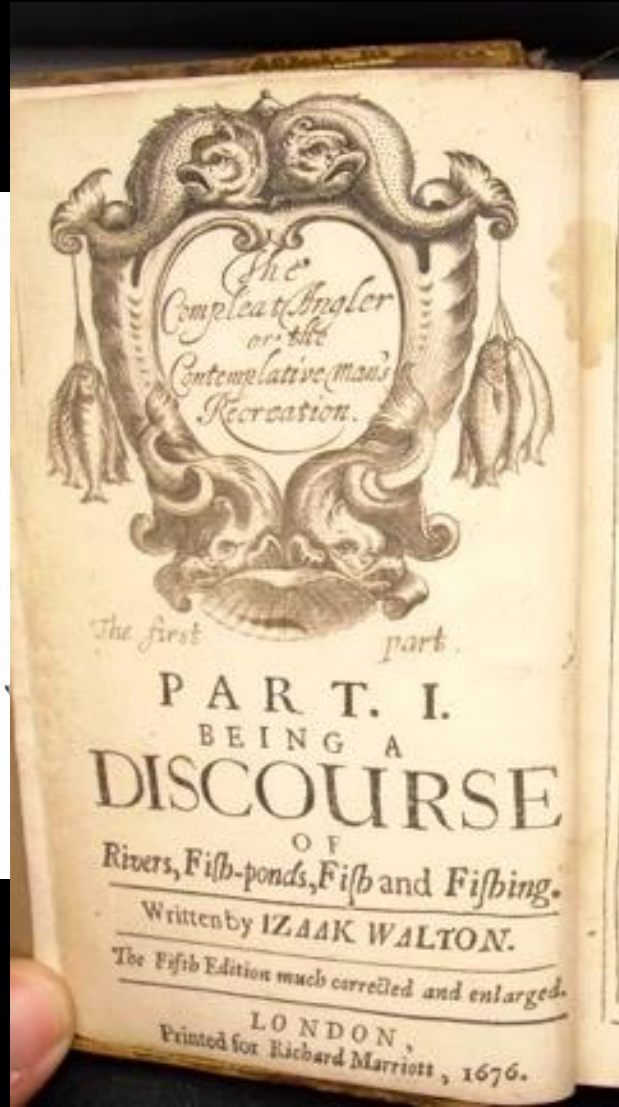


*Trout Unlimited Alaska:
Engaging Alaskan Anglers in Conservation*



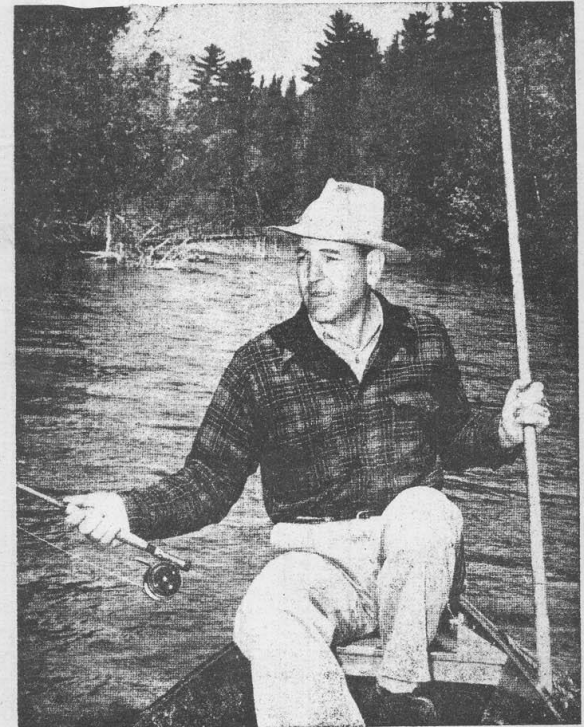
A History of Casting for Conservation



TROUT, Unlimited Quarterly

Vol I No. I

Official Publication of TROUT, Unlimited, Inc. WINTER, 1959



GEORGE A. GRIFFITH, Chairman of the Michigan Conservation Commission Fish Committee, and TROUT, Unlimited founder and director, lives on the bank of the famous AuSable River east of Grayling, just above Wakeley Bridge. He maneuvers his river boat with one hand and casts a fly with the other as well as any guide on the river.



To conserve, protect and restore North America's coldwater fisheries and their watersheds.



Status of Freshwater Populations of Wild Pacific Salmon by Watershed

- | | |
|--|--|
| Abundant salmon, diverse species; minimal influence of hatchery fish | Devoid of wild salmon |
| Moderate abundance and diversity; some hatchery influence | No data |
| Low numbers and diversity; significant hatchery influence | Hatcheries |



MARTIN GAMACHE AND LISA R. RITTER, NG STAFF
 SOURCES: STATE OF THE SALMON; JACK STANFORD, UNIVERSITY OF MONTANA; USGS; CHRISTINA FRIEDLE, WILD SALMON CENTER

120°W

TU Chapters Building Community

- Total Members 1000
- 577 Volunteer Hours
- 259 in Direct Conservation Work



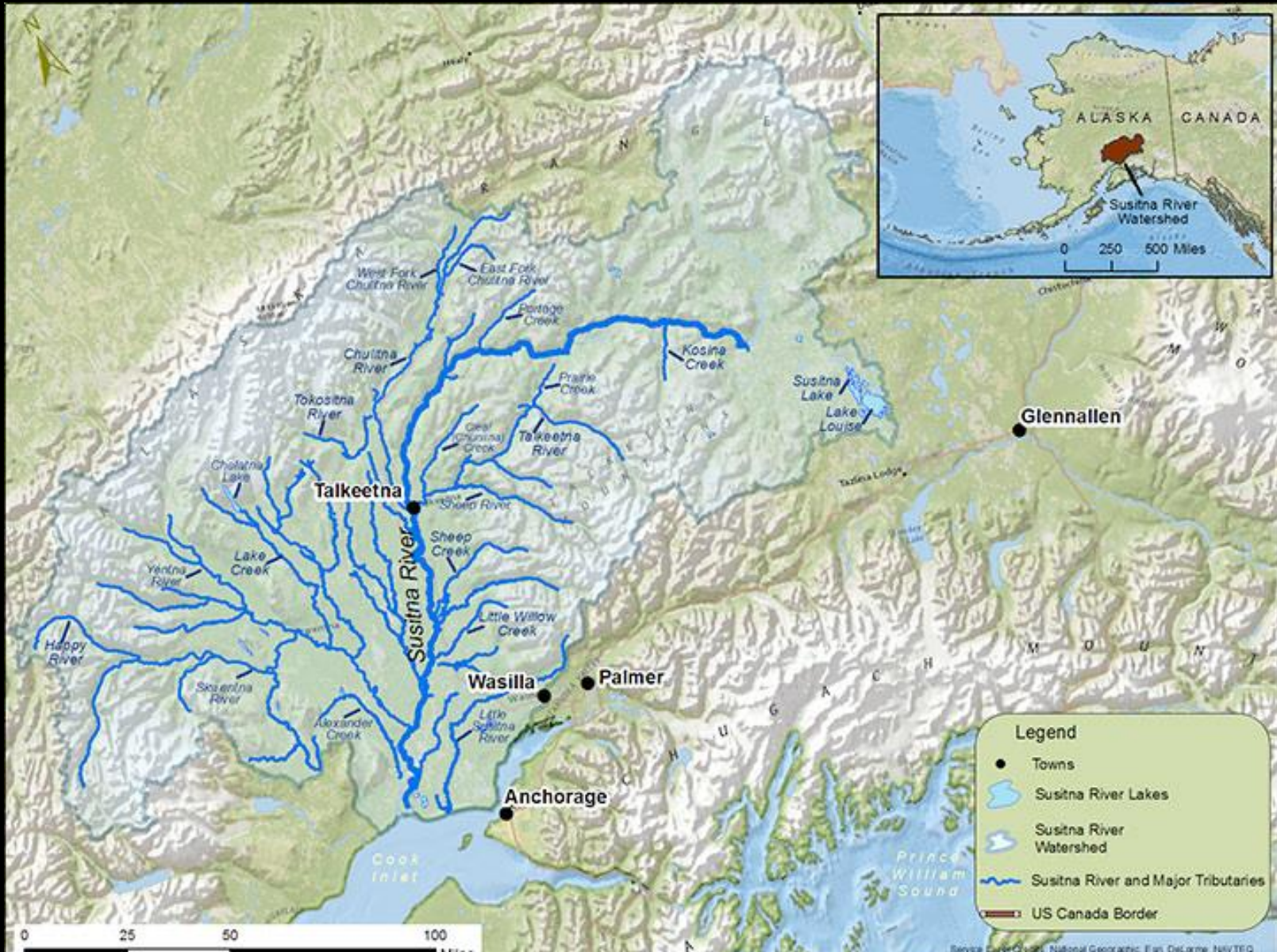
Organizing Opportunities



Sport fishing in Alaska

- The most recent ADFG survey shows that more than 450,000 residents participate in Alaska's sport fisheries.
- Statewide, anglers spend more than \$1.4 billion.
- If we can strategically tap into and motivate 1% or 10% of those anglers to be more engaged in conservation, the impact could be phenomenal.

Sportsmen in Mat-Su



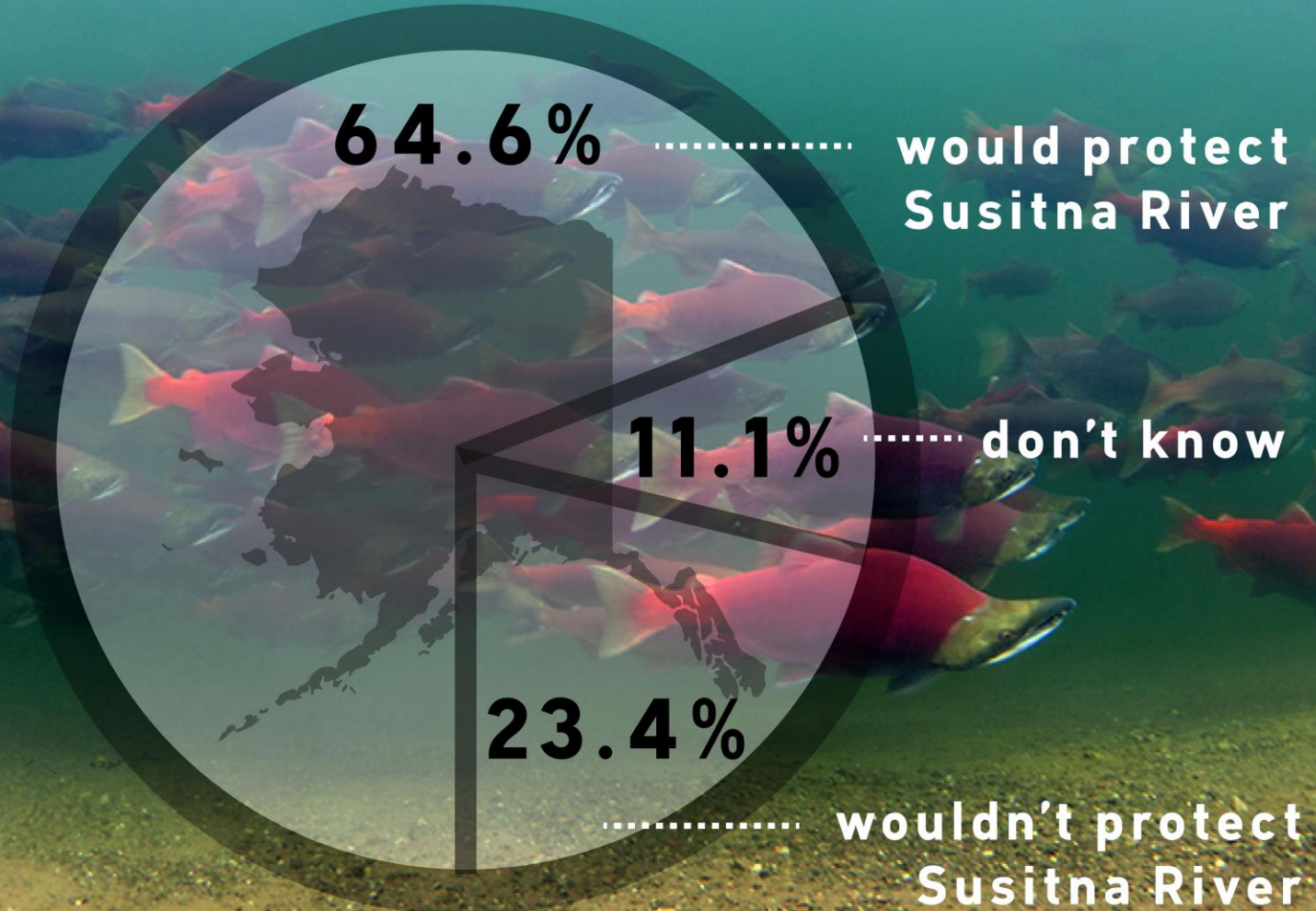
SALMON CAN'T VOTE



BUT YOU CAN

Other slides or info to consider

64.6% of Alaskans say they would be **more likely to oppose the Susitna Dam if it would directly impact and alter salmon and trout habitat** compared to 23.4% who said it wouldn't and 11.1% who replied 'don't know'



Local tourism and recreation businesses bring in more than **\$200 million annually** and support more than **5,400 Alaskan jobs.**

